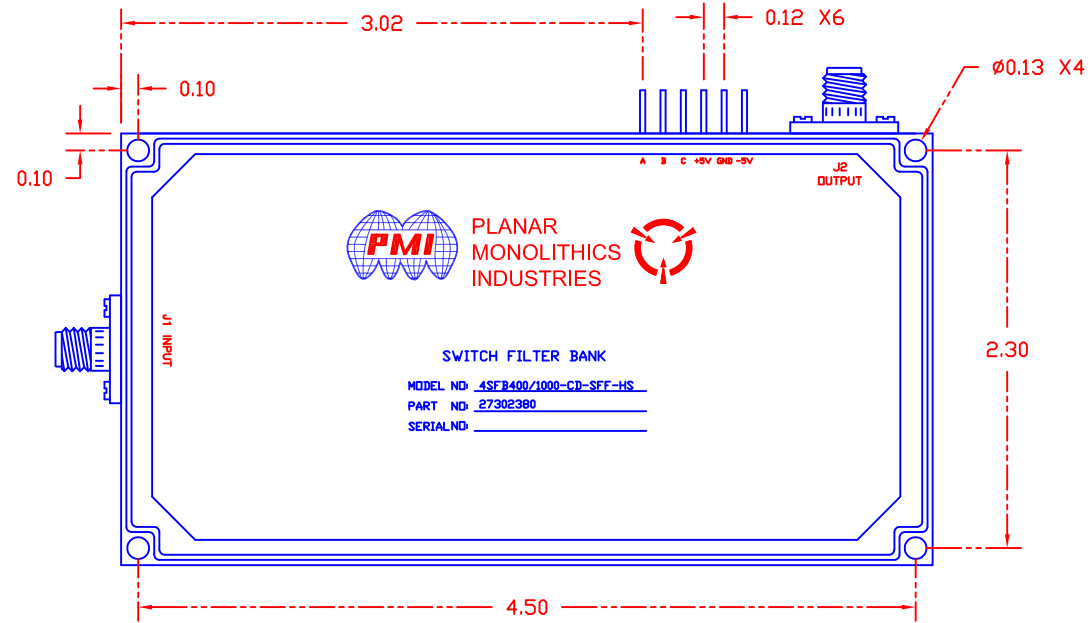
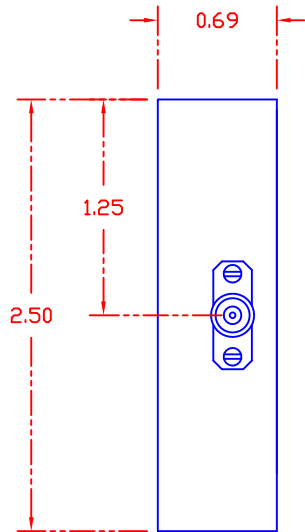
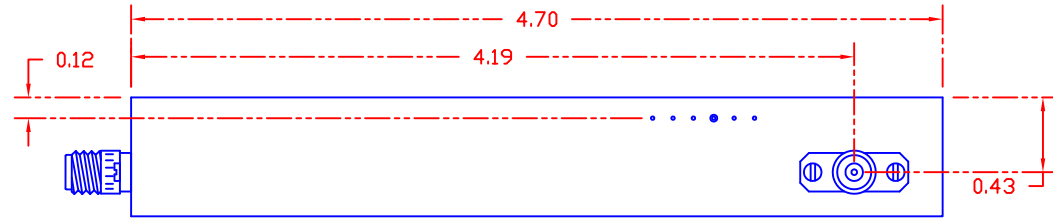


NOTES:  
 Customer wanted the smallest possible length.  
 The high frequency rejection at 7900MHz to 8600MHz is now only a GDAL.


REVISIONS				
ZONE	REV.	DESCRIPTION	DATE	APPROVED
	-	ORIGINAL RELEASE	3/29/07	



CONFIDENTIAL AND PROPRIETARY

Signed and Accepted by: \_\_\_\_\_ Date: \_\_\_\_\_

ALL DIMENSIONS ARE IN INCHES  
 TOLERANCES:  
 X.XX ±0.010  
 X.XXX ±0.005

PART NO. 27302380		 <b>PLANAR MONOLITHICS INDUSTRIES</b> 7311-F GROVE RD FREDERICK, MARYLAND		
APPROVALS	DATE	TITLE		
DRAWN <i>KM</i>	3/29/07	Outline Drawing 4SFB400/1000-CD-SFF-HS		
CHECKED		SIZE	FSCM NO.	DWG NO.
ISSUED		A	1QJWO	27002381
		SCALE	N/S	SHEET 1 of 1
				REV. -