

## DESCRIPTION

PMI MODEL APD-2-500M18G-SFF-30W IS A TWO WAY POWER DIVIDER FEATURING HIGH ISOLATION, LOW INSERTION LOSS, LOW VSWR AND HAS EXCELLENT PHASE AND AMPLITUDE BALANCE.

## SPECIFICATIONS

- FREQUENCY RANGE: 0.5 TO 18 GHz
- INSERTION LOSS: 2.0 dB MAXIMUM (ABOVE 3.01 dB SPLIT)
- VSWR (IN/OUT): 1.5:1 MAXIMUM
- ISOLATION: 14 dB MINIMUM
- AMPLITUDE BALANCE:  $\pm 0.5$  dB MAXIMUM
- PHASE BALANCE:  $\pm 5^\circ$  MAXIMUM
- POWER HANDLING: FORWARD: 30 W MAXIMUM  
REVERSED: 1 W MAXIMUM
- IMPEDANCE: 50  $\Omega$
- CONNECTORS: SMA FEMALE (X3)
- FINISH: PAINTED BLUE
- SOLDER: LEAD FREE, RoHS COMPLIANT
- WEIGHT: 100 g

## ENVIRONMENTAL RATINGS

- TEMPERATURE: -55 °C TO +85 °C (OPERATING)  
-65 °C TO +125 °C (STORAGE)
- HUMIDITY: MIL-STD-202F, METHOD 103B COND. B
- SHOCK: MIL-STD-202F, METHOD 213B COND. B
- VIBRATION: MIL-STD-202F, METHOD 204D COND. B
- ALTITUDE: MIL-STD-202F, METHOD 105C COND. B
- TEMPERATURE CYCLE: MIL-STD-202F, METHOD 107D COND A

NOTE: SPECIFICATIONS WILL VARY OVER OPERATING TEMPERATURE

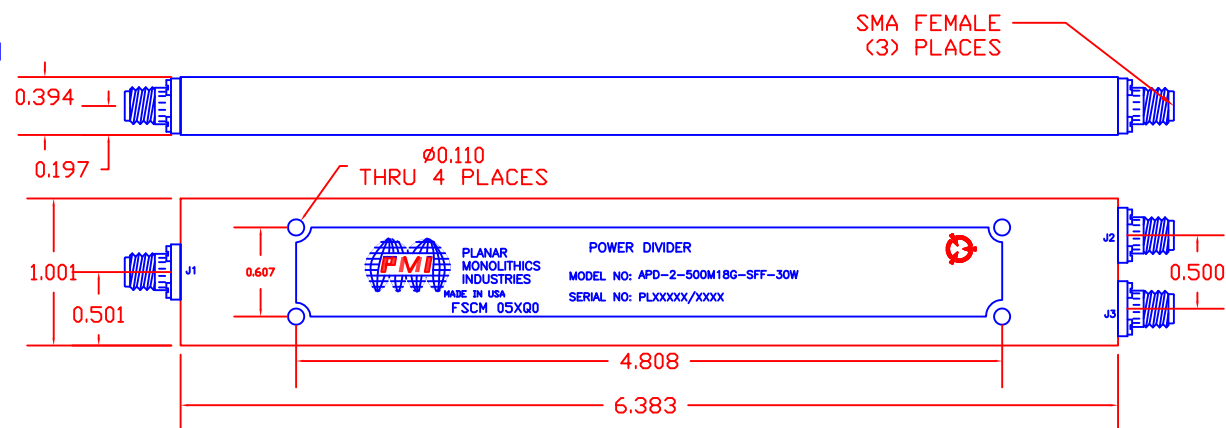
NOTE: THE ABOVE SPECIFICATIONS ARE SUBJECT TO CHANGE OR REVISION

ALL DIMENSIONS ARE IN INCHES  
TOLERANCES:  
X.XX  $\pm 0.020$   
X.XXX  $\pm 0.010$

**PMI CONFIDENTIAL AND PROPRIETARY**

REVISIONS				
ZONE	REV.	DESCRIPTION	DATE	APPROVED
	-	PRELIMINARY	07/19/17	

## MECHANICAL OUTLINE



## PLANAR MONOLITHICS INDUSTRIES, INC.

7311-F GROVE ROAD

FREDERICK, MARYLAND 21704 USA

TEL: (301)-662-5019, FAX: (301)-662-1731

WEB: www.pmi-rf.com, EMAIL: sales@pmi-rf.com

ISO 9001 CERTIFIED



APPROVALS		DATE		TITLE	
DRAWN		7/19/17		PRODUCT FEATURE	
CHECKED				APD-2-500M18G-SFF-30W	
ISSUED					
SIZE	FSCM NO.	DWG NO.	REV.		
A	05XQ0	PRELIMINARY	-		
SCALE	N:S	SHEET	1 OF 1		