

**DESCRIPTION:**

PMI MODEL NUMBER PXS-400M500M-60-SFF IS A PIN DIODE TRANSFER SWITCH THAT OPERATES OVER THE 400MHZ TO 500MHZ FREQUENCY RANGE. THIS MODEL INCORPORATES A TTL COMPATIBLE DRIVER FOR EASY SYSTEM INTEGRATION. HERMETICALLY SEALED UNITS ARE AVAILABLE AS AN OPTION.

**SPECIFICATIONS:**

- FREQUENCY: 400 MHz TO 500 MHz
- INSERTION LOSS: 1.5dB TYPICAL, 2.0dB MAXIMUM
- ISOLATION: 60dB MINIMUM
- VSWR: 2.0:1 MAXIMUM
- SPEED: 30ns MAXIMUM
- POWER INPUT: 1 WATT CW MAXIMUM
- CONTROL: TTL LOGIC - SEE TABLE
- POWER SUPPLY: +5V @ 60 mA NOMINAL  
-12V @ 75 mA NOMINAL
- CONNECTORS: SMA FEMALE CONNECTORS
- SIZE: 1.0" L x 1.0"W x 0.5"H
- WEIGHT: 1.4 OUNCES TYPICAL

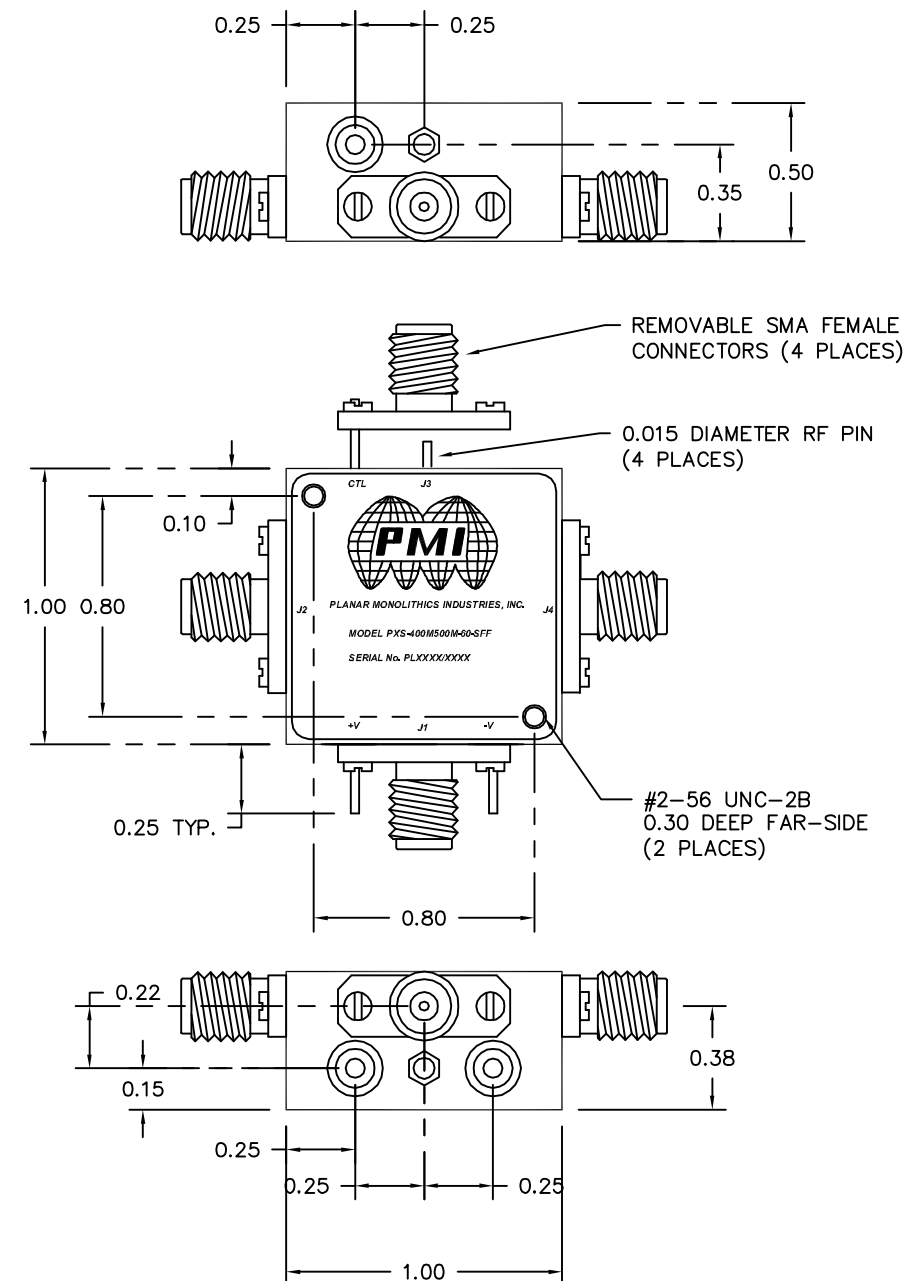
TTL LOGIC	INSERTION LOSS	ISOLATION
0	J1-J2 J3-J4	J1-J4 J2-J3
1	J1-J4 J2-J3	J1-J2 J3-J4

**ENVIRONMENTAL RATINGS:**

- TEMPERATURE: -55°C TO +85°C (OPERATING)  
-65°C TO +125°C (STORAGE)
- HUMIDITY: MIL-STD-202F, METHOD 103B COND. B
- SHOCK: MIL-STD-202F, METHOD 213B COND. B
- VIBRATION: MIL-STD-202F, METHOD 204D COND. B
- ALTITUDE: MIL-STD-202F, METHOD 105C COND. B
- SALT FOG: MIL-STD-202F, METHOD 107D COND. A
- FUNGUS: MIL-STD-810C, METHOD 508.2
- TEMPERATURE CYCLE: MIL-STD-202F, METHOD 107

NOTE: THE ABOVE SPECIFICATIONS ARE SUBJECT TO CHANGE OR REVISION

REVISIONS				
ZONE	REV.	DESCRIPTION	DATE	APPROVED
	A	ORIGINAL RELEASE	1/13/10	



ALL DIMENSIONS ARE IN INCHES  
TOLERANCES:  
X.XX ±0.010  
X.XXX ±0.005

**PLANAR MONOLITHICS INDUSTRIES, INC.**  
7311-F GROVE ROAD  
FREDERICK, MARYLAND 21704 USA  
TEL: 301-662-5019 FAX: 301-662-1731  
WEBSITE: [www.pmi-rf.com](http://www.pmi-rf.com)  
E-MAIL: [sales@pmi-rf.com](mailto:sales@pmi-rf.com)  
ISO 9001:2008 CERTIFIED



APPROVALS		DATE	TITLE		
DRAWN <i>KM</i>		1/13/10	PRODUCT FEATURE		
CHECKED			PXS-400M500M-60-SFF		
ISSUED			400MHz to 500MHz Transfer Switch		
SIZE	FSCM NO.	DWG NO.	REV.		
A	05XQ0	PRELIMINARY	A		
SCALE	N:S	SHEET		1 OF 1	