

DESCRIPTION

PMI MODEL P2T-10M6G-25-R-5V48V-SFF-HIP40W IS A REFLECTIVE, SINGLE POLE, TWO THROW PIN DIODE SWITCH THAT OPERATES OVER THE 10 MHz TO 6000 MHz FREQUENCY RANGE. THIS MODEL IS CAPABLE OF HANDLING AN INPUT POWER LEVEL OF 40 WATTS CW WHILE PROVIDING SWITCHING SPEEDS OF <100 n. THIS MODEL INCORPORATES A TTL COMPATIBLE DRIVER FOR EASY SYSTEM INTEGRATION.

SPECIFICATIONS

- FREQUENCY RANGE: 10 TO 6000 MHz
- ISOLATION: 25 dB TYPICAL, 20 dB MINIMUM
- INSERTION LOSS: 2.5 dB TYPICAL, 2.8 dB MAXIMUM
- VSWR IN/OUT: 2.0:1 TYPICAL
- OPERATING INPUT POWER: 40 WATTS CW MAXIMUM (NOT TO BE SWITCHED ANY HIGHER THAN 50 kHz [PRI] OR HOT SWITCHED)
- RF SWITCHING SPEED: 100 ns MAXIMUM (50% TTL TO 10% / 90% RF)
- IMPEDANCE: 50 OHMS
- DC VOLTAGE: +5 V @ 30 mA TYPICAL
-48 V @ 30 mA TYPICAL
- CONTROL SIGNAL: TTL LOGIC (SEE LOGIC TABLE)
- CONNECTORS: SMA(F) - REMOVABLE
- CONTROL CONNECTORS: SOLDER PINS
- FINISH: EPOXY PAINTED BLUE
BOTTOM SIDE TO BE UNPAINTED (SILVER PLATED)

ENVIRONMENTAL RATINGS

- TEMPERATURE: -54 °C TO +85 °C (OPERATING)
-55 °C TO +125 °C (STORAGE)
- SHOCK: MIL-STD-202F, METHOD 213B COND. B
- VIBRATION: MIL-STD-202F, METHOD 204D COND. B
- ALTITUDE: MIL-STD-202F, METHOD 105C COND. B
- TEMPERATURE CYCLE: MIL-STD-202F, METHOD 107D

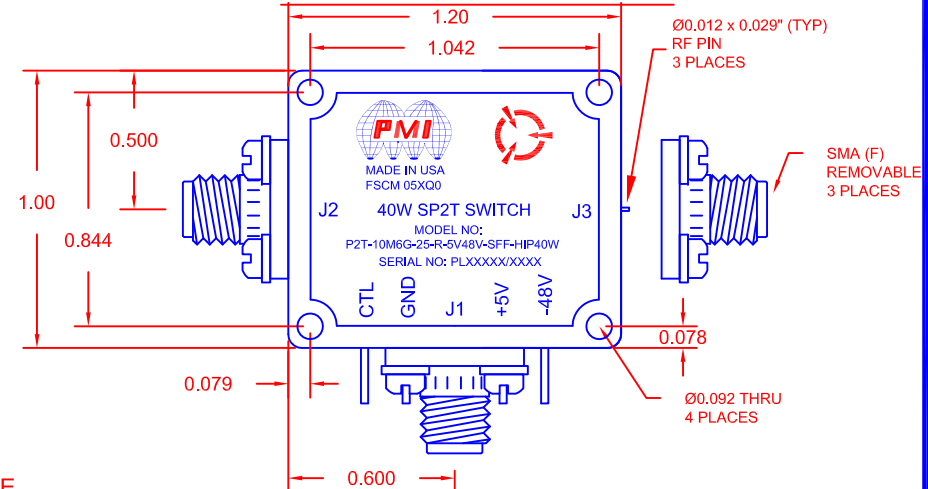
NOTE: SPECIFICATIONS WILL VARY OVER OPERATING TEMPERATURE
NOTE: THE ABOVE SPECIFICATIONS ARE SUBJECT TO CHANGE OR REVISION

ALL DIMENSIONS ARE IN INCHES
TOLERANCES:
X.XX ±0.020
X.XXX ±0.010

PMI CONFIDENTIAL AND PROPRIETARY

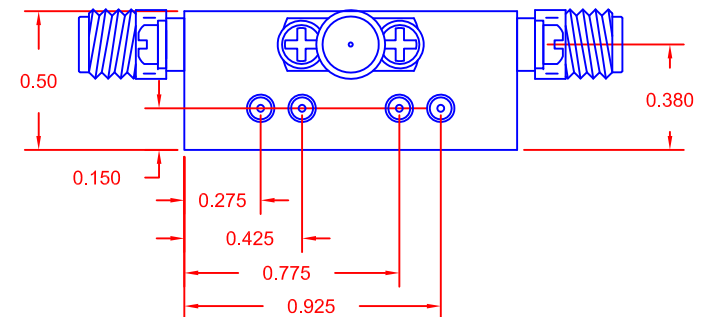
| REVISIONS | | | | |
|-----------|------|-------------|----------|----------|
| ZONE | REV. | DESCRIPTION | DATE | APPROVED |
| | - | PRELIMINARY | 12/07/15 | SP |

MECHANICAL OUTLINE



LOGIC TABLE

| CTL | J1 - J2 | J1 - J3 |
|-----|---------|---------|
| 0 | ON | OFF |
| 1 | OFF | ON |



PLANAR MONOLITHICS INDUSTRIES, INC.
7311-F GROVE ROAD
FREDERICK, MARYLAND 21704 USA
TEL: (301)-662-5019, FAX: (301)-662-1731
WEB: www.pmi-rf.com, EMAIL: sales@pmi-rf.com
ISO 9001 CERTIFIED



| APPROVALS | | DATE | TITLE | | |
|---------------------|--|----------|--|-------------------|------------------------|
| DRAWN <i>E.M.F.</i> | | 12/07/15 | PRODUCT FEATURE P2T-10M6G-25-R-5V48V-SFF-HIP40W | | |
| CHECKED | | | SIZE A | FSCM NO. 05XQ0 | DWG NO. PRELIMINARY |
| ISSUED | | | SCALE N:S | | SHEET 1 OF 1 |