

## DESCRIPTION

PMI MODEL NO. 4BP200-25-2A-PP IS A LC BANDPASS FILTER WITH SMA CONNECTORS IN AND OUT.

## SPECIFICATIONS

- CENTER FREQUENCY: ----- 200 MHz
- 3 dB BANDWIDTH: ----- 25 MHz,  $\pm 5\%$
- VSWR IN THE PASSBAND: ----- 1.5:1 MAX
- INSERTION LOSS (PASSBAND): ----- 5 dB NOMINAL
- REJECTION: ----- 4 SECTION RESPONSE
- CONNECTORS: ----- SMA FEMALE
- SIZE: ----- 1.5" X 0.5" X 0.5"
- WEIGHT: ----- 1 oz TYP

## ENVIRONMENTAL RATINGS

- TEMPERATURE: ----- -55 °C TO +85 °C (OPERATING)  
----- -65 °C TO +125 °C (STORAGE)
- HUMIDITY: ----- MIL-STD-202F, METHOD 103B COND. B
- SHOCK: ----- MIL-STD-202F, METHOD 213B COND. B
- VIBRATION: ----- MIL-STD-202F, METHOD 204D COND. B
- ALTITUDE: ----- MIL-STD-202F, METHOD 105C COND. B
- SALT FOG: ----- MIL-STD-202F, METHOD 107D COND. A
- FUNGUS: ----- MIL-STD-810C, METHOD 508.2
- TEMPERATURE CYCLE: ----- MIL-STD-202F, METHOD 107

NOTE: SPECIFICATIONS WILL VARY OVER OPERATING TEMPERATURE

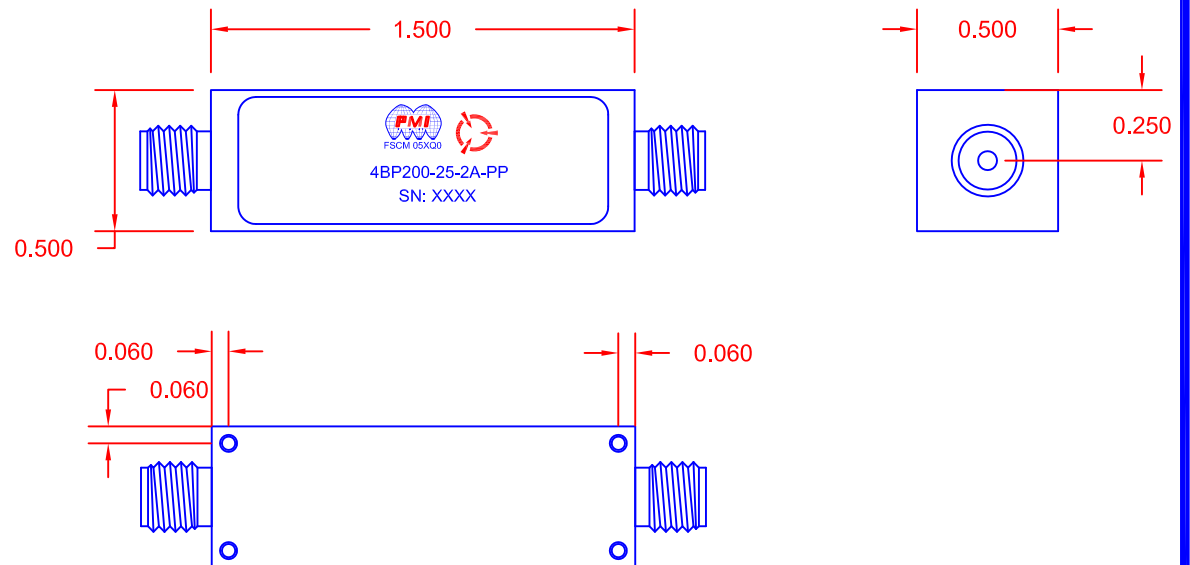
NOTE: THE ABOVE SPECIFICATIONS ARE SUBJECT TO CHANGE OR REVISION

**PMI CONFIDENTIAL AND PROPRIETARY**

ALL DIMENSIONS  
ARE IN INCHES [mm]  
TOLERANCES:  
X,XX  $\pm 0.020$   
X,XXX  $\pm 0.010$

REVISIONS				
ZONE	REV.	DESCRIPTION	DATE	APPROVED
	-	PRELIMINARY	2/18/2020	

## MECHANICAL OUTLINE



**PLANAR MONOLITHICS INDUSTRIES, INC.**  
7311-F GROVE ROAD  
FREDERICK, MARYLAND 21704 USA  
TEL: (301)-662-5019, FAX: (301)-662-1731  
WEB: [www.pmi-rf.com](http://www.pmi-rf.com), EMAIL: [sales@pmi-rf.com](mailto:sales@pmi-rf.com)  
ISO 9001 CERTIFIED



APPROVALS		DATE	TITLE			REV.
DRAWN <i>EW</i>		2/18/20	PRODUCT FEATURE 4BP200-25-2A-PP			-
REDRAWN			SIZE A	FSCM NO. 05XQ0	DWG NO. PRELIMINARY	
ISSUED			SCALE N:S		SHEET 1 OF 1	