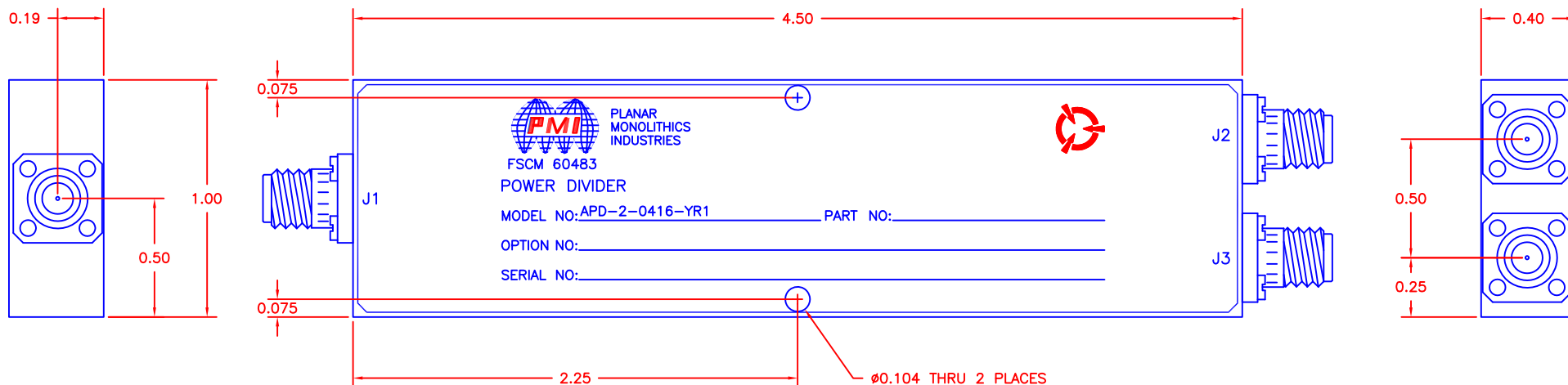


DESCRIPTION

PMI MODEL APD-2-0416-YR1 IS A TWO WAY POWER DIVIDER FEATURING HIGH ISOLATION, LOW INSERTION LOSS, AND LOW VSWR. IT IS DESIGNED FOR BROADBAND USE AND HIGH RELIABILITY.

REVISIONS				
ZONE	REV.	DESCRIPTION	DATE	APPROVED
	-	ORIGINAL RELEASE JOB# P411048E	4/5/05	



SPECIFICATIONS

- FREQUENCY RANGE: 0.4 TO 16 GHz
- INSERTION LOSS: 0.4 TO 6.0 GHz, 1.8 dB MAXIMUM
6.0 TO 16 GHz, 4.0 dB MAXIMUM
- VSWR: 0.4 TO 6.0 GHz, 1.5:1 MAXIMUM
6.0 TO 16 GHz, 1.75:1 MAXIMUM
- ISOLATION: 0.4 TO 6.0 GHz, 16.0 dB MINIMUM
6.0 TO 16 GHz, 18.0 dB MINIMUM
- AMPLITUDE BALANCE: 0.4 TO 6.0 GHz, ± 0.4 dB
6.0 TO 16 GHz, ± 0.75 dB
- PHASE BALANCE: 0.4 TO 6.0 GHz, $\pm 2.5^\circ$
6.0 TO 16 GHz, $\pm 5^\circ$
- AVERAGE POWER INTO LOAD VSWR:
1.2:1 25 WATTS
2.0:1 7.5 WATTS
 ∞ :1 0.75 WATTS
- SIZE: 4.50" (L) x 1.00" (W) x 0.40" (H)

ENVIRONMENTAL RATINGS:

- TEMPERATURE: -55°C TO +85°C (OPERATING)
-65°C TO +125°C (STORAGE)
- HUMIDITY: MIL-STD-202F, METHOD 103B COND. B
- SHOCK: MIL-STD-202F, METHOD 213B COND. B
- VIBRATION: MIL-STD-202F, METHOD 204D COND. B
- ALTITUDE: MIL-STD-202F, METHOD 105C COND. B
- TEMPERATURE CYCLE: MIL-STD-202F, METHOD 107D COND. A

NOTE: SPECIFICATIONS WILL VARY OVER OPERATING TEMPERATURE
NOTE: THE ABOVE SPECIFICATIONS ARE SUBJECT TO CHANGE OR REVISION

ALL DIMENSIONS ARE IN INCHES
TOLERANCES:
X.XX ± 0.020
X.XXX ± 0.010

PLANAR MONOLITHICS INDUSTRIES, INC.

7311-G GROVE ROAD
FREDERICK, MARYLAND 21704 USA
TEL: 301-631-1579 FAX: 301-662-2029
WEBSITE: www.planarmonolithicsindustries.com
E-MAIL: sales@planarmonolithics.com
ISO 9001:2000 CERTIFIED



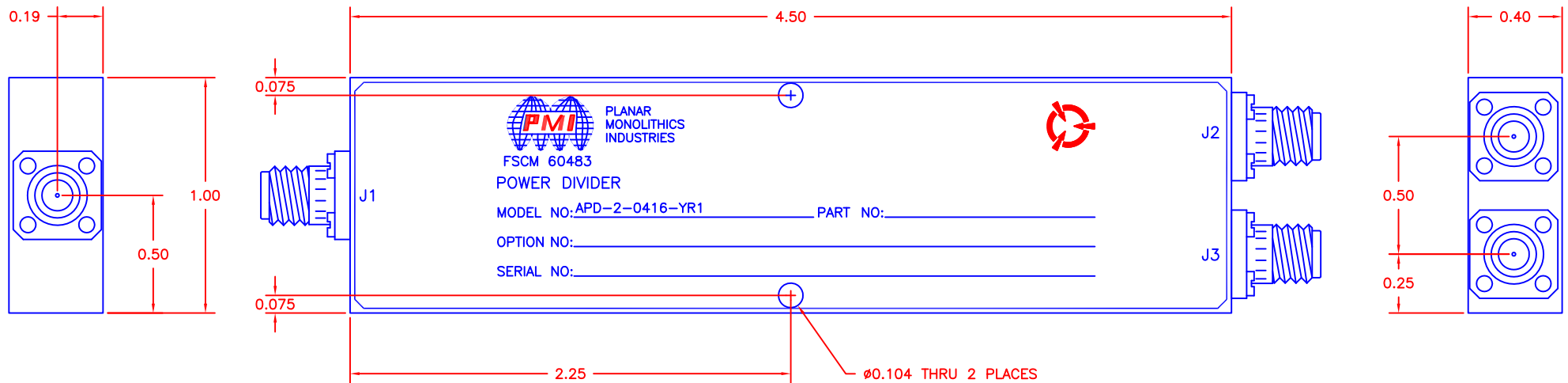
APPROVALS		DATE	TITLE			
DRAWN <i>YR</i>		4/5/05	PRODUCT FEATURE APD-2-0416-YR1 0.4 - 16 GHz 2 WAY POWER DIVIDER			
CHECKED			SIZE	FSCM NO.	DWG NO.	REV.
ISSUED			A	OZXXZ8	100-7411	-
			SCALE	N:S	SHEET	1 OF 3

DESCRIPTION

PMI MODEL APD-2-0416-YR1 IS A TWO WAY POWER DIVIDER FEATURING HIGH ISOLATION, LOW INSERTION LOSS, AND LOW VSWR. IT IS DESIGNED FOR BROADBAND USE AND HIGH RELIABILITY.

REVISIONS				
ZONE	REV.	DESCRIPTION	DATE	APPROVED
	-	ORIGINAL RELEASE JOB# P411048E	4/5/05	

MECHANICAL OUTLINE



PLANAR MONOLITHICS INDUSTRIES, INC.

7311-G GROVE ROAD
 FREDERICK, MARYLAND 21704 USA
 TEL: 301-631-1579 FAX: 301-662-2029
 WEBSITE: www.planarmonolithicsindustries.com
 E-MAIL: sales@planarmonolithics.com
 ISO 9001:2000 CERTIFIED



ALL DIMENSIONS ARE IN INCHES
 TOLERANCES:
 X.XX ±0.020
 X.XXX ±0.010

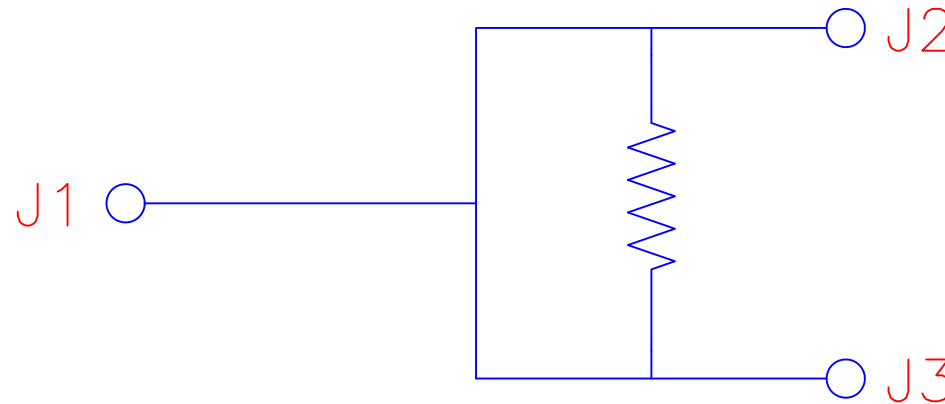
APPROVALS		DATE	TITLE			
DRAWN <i>YR</i>		4/5/05	MECHANICAL OUTLINE			
CHECKED			APD-2-0416-YR1			
ISSUED			0.4 - 16 GHz 2 WAY POWER DIVIDER			
SIZE	FSCM NO.	DWG NO.	REV.			
A	OZXXZ8	100-7411	-			
SCALE N:S			SHEET 2 OF 3			

DESCRIPTION

PMI MODEL APD-2-0416-YR1 IS A TWO WAY POWER DIVIDER FEATURING HIGH ISOLATION, LOW INSERTION LOSS, AND LOW VSWR. IT IS DESIGNED FOR BROADBAND USE AND HIGH RELIABILITY.

REVISIONS				
ZONE	REV.	DESCRIPTION	DATE	APPROVED
	-	ORIGINAL RELEASE JOB# P411048E	4/5/05	

FUNCTIONAL BLOCK DIAGRAM



PLANAR MONOLITHICS INDUSTRIES, INC.

7311-G GROVE ROAD
 FREDERICK, MARYLAND 21704 USA
 TEL: 301-631-1579 FAX: 301-662-2029
 WEBSITE: www.planarmonolithicsindustries.com
 E-MAIL: sales@planarmonolithics.com
 ISO 9001:2000 CERTIFIED



CONFIDENTIAL AND PROPRIETARY

APPROVALS		DATE	TITLE		
DRAWN		4/5/05	FUNCTIONAL BLOCK DIAGRAM		
CHECKED			APD-2-0416-YR1		
ISSUED			0.4 - 16 GHz 2 WAY POWER DIVIDER		
SIZE	FSCM NO.	DWG NO.	REV.		
A	OZXZ8	100-7411	-		
SCALE N:S			SHEET 3 OF 3		