

DESCRIPTION:

PMI MODEL NUMBER: PEAFS3-14-100M6G-SFF IS A VERY LOW NOISE AMPLIFIER WITH WORKING FREQUENCY RANGE OF 100 MHz TO 6 GHz. THIS AMPLIFIER IS SUPPLIED IN A HOUSING THAT CAN BE USED AS A SURFACE MOUNT OR CONNECTORIZED COMPONENT.

SPECIFICATIONS:

Frequency Range:	100 MHz to 6 GHz
Gain:	+14 dB Typ
Gain Flatness:	±0.8 dB Max
Noise Figure:	3.0 dB Max. 2.5 dB Typ.
OP1dB:	+14 dBm Typ. +12 dBm Min.
PSat:	+16 dBm Typ. +14 dBm Min.
OIP3:	+24 dBm Typ. +22 dBm Min.
VSWR Input/Output:	2.0:1 Max.
Reverse Isolation:	18 dB Min. 20 dB Typ.
DC Supply:	+10 to 15 VDC @ 50mA Max.
Connectors In/Out:	SMA Female
Finish:	Gold Plated

ENVIRONMENTAL RATINGS:

Temperature:	-40°C to + 85°C (Operating) -40°C to +100°C (Storage)
Humidity:	MIL-STD-202F, METHOD 103B COND B.
Shock:	MIL-STD-202F, METHOD 213B COND B.
Altitude:	MIL-STD-202F, METHOD 105C COND B.
Temperature Cycle:	MIL-STD-202F, METHOD 107D COND A
Note: The above specifications are subject to change or revision. Specifications will vary over operating temperature.	

FEATURES:

Internal Voltage Regulation
Unconditional Stability

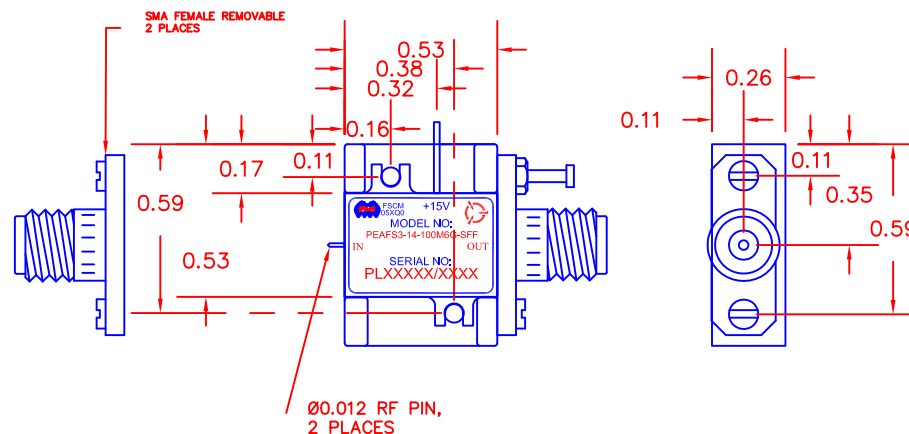
AVAILABLE OPTIONS:

Various Package types
Various Connector types
Temperature Compensation
Gain and Phase Matching
MIL-STD-883 Screening Available

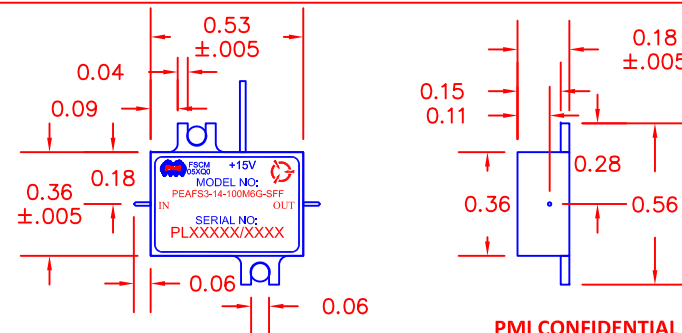
ALL DIMENSIONS ARE IN INCHES
TOLERANCES:
X.XX ±0.020
X.XXX ±0.010

REVISIONS			
ZONE	REV.	DESCRIPTION	DATE
	-	ORIGINAL RELEASE	6/25/21

HOUSING WITH CARRIER



HOUSING WITHOUT CARRIER (SURFACE MOUNT)



PMI CONFIDENTIAL AND PROPRIETARY

PLANAR MONOLITHICS INDUSTRIES, INC.

7311-F GROVE ROAD
FREDERICK, MARYLAND 21704 USA
TEL: 301-662-5019 FAX: 301-662-1731
WEBSITE: www.pmi-rf.com
E-MAIL: sales@pmi-rf.com
ISO 9001 CERTIFIED



APPROVALS		DATE		TITLE	
DRAWN		6/25/21		PRODUCT FEATURE	
REDRAWN		SPH		PEAFS3-14-100M6G-SFF	
ISSUED				PRELIMINARY	
SIZE		FSCM NO.		DWG NO	
SCALE		N:S		SHEET	
				1 OF 2	

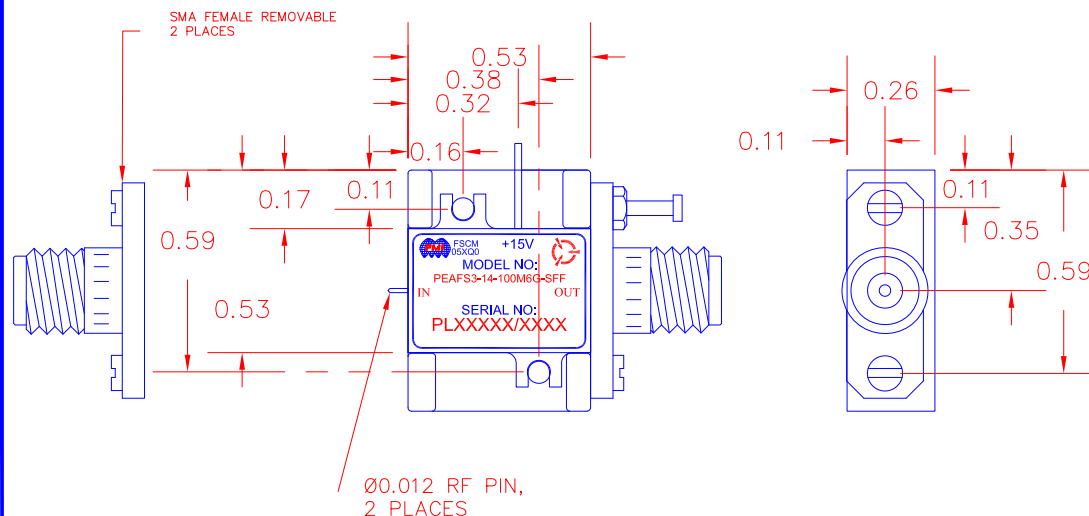
DESCRIPTION:

PMI MODEL NUMBER: PEAFS3-14-100M6G-SFF IS A VERY LOW NOISE AMPLIFIER WITH WORKING FREQUENCY RANGE OF 100MHZ TO 6GHZ. THIS AMPLIFIER IS SUPPLIED IN A HOUSING THAT CAN BE USED AS A SURFACE MOUNT OR CONNECTORIZED COMPONENT.

REVISIONS			
ZONE	REV.	DESCRIPTION	DATE
	-	ORIGINAL RELEASE	6/25/21

HOUSING WITH CARRIER

MECHANICAL OUTLINE

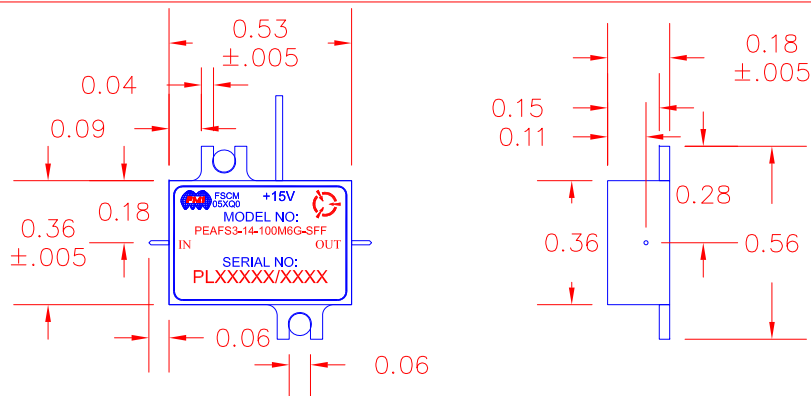


ENVIRONMENTAL RATINGS:

Temperature: -40°C to + 85°C (Operating)
 -40°C to +100°C (Storage)
 Humidity: MIL-STD-202F, METHOD 103B COND B.
 Shock: MIL-STD-202F, METHOD 213B COND B.
 Altitude: MIL-STD-202F, METHOD 105C COND B.
 Temperature Cycle: MIL-STD-202F, METHOD 107D COND A
 Note: The above specifications are subject to change or revision.
 Specifications will vary over operating temperature.

ALL DIMENSIONS ARE IN INCHES
 TOLERANCES:
 XXX ±0.020
 XXXX ±0.010

HOUSING WITHOUT CARRIER (SURFACE MOUNT)



PMI CONFIDENTIAL AND PROPRIETARY

PLANAR MONOLITHICS INDUSTRIES, INC.

7311-F GROVE ROAD
 FREDERICK, MARYLAND 21704 USA
 TEL: 301-662-5019 FAX: 301-662-1731
 WEBSITE: www.pmi-rf.com
 E-MAIL: sales@pmi-rf.com
 ISO 9001 CERTIFIED



APPROVALS		DATE		TITLE		REV.	
DRAWN		6/25/2021		PRODUCT FEATURE	PEAFS3-14-100M6G-SFF		
REDRAWN	SPH			SIZE A	FSCM NO.	DWG NO	PRELIMINARY
ISSUED				SCALE	N:S	SHEET	2 OF 2