

DESCRIPTION

PMI MODEL P2T-100M52G-100-T IS AN ABSORPTIVE, SINGLE POLE TWO THROW PIN DIODE SWITCH THAT OPERATES OVER THE 100 MHz TO 52 GHz FREQUENCY RANGE. IT FEATURES LOW INSERTION LOSS AND HIGH ISOLATION IN A SLIMLINE PACKAGE. THIS MODEL ALSO INCORPORATES A TTL COMPATIBLE DRIVER FOR EASE OF SYSTEM INTEGRATION.

SPECIFICATIONS

- FREQUENCY: 100 MHz TO 52 GHz
- INSERTION LOSS: 5.0 dB (100 MHz TO 18 GHz) TYP
6.0 dB (18 TO 40 GHz) TYP
9.0 dB (40 TO 52 GHz) TYP
- VSWR: 2.2:1 (100 MHz TO 18GHz) TYP
2.5:1 (18 TO 40 GHz) TYP
3.0:1 (40 TO 52 GHz) TYP
- ISOLATION: 70 dB (100 MHz TO 1 GHz) TYP
100 dB (1 TO 18 GHz) TYP
100 dB (18 TO 40 GHz) TYP
80 dB (40 TO 52 GHz) TYP
- INPUT POWER: 20 dBm CW MAX
- SWITCHING SPEED: 50 ns MAX
- CONTROL SIGNAL: TTL LOGIC "0" = J1-J2 ON
TTL LOGIC "1" = J1-J3 ON
- DC VOLTAGE: +5 V @ 100 mA MAX
-5 V @ 100 mA MAX
- RF CONNECTORS: 2.4 mm FEMALE
- SIZE: 1.0" X 0.75" X 0.4"
- FINISH: GOLD PLATED

ENVIRONMENTAL RATINGS

- TEMPERATURE: -40 °C TO +85 °C (OPERATING)
-65 °C TO +125 °C (STORAGE)
- HUMIDITY: MIL-STD-202F, METHOD 103B COND. B
- SHOCK: MIL-STD-202F, METHOD 213B COND. B
- VIBRATION: MIL-STD-202F, METHOD 204D COND. B
- ALTITUDE: MIL-STD-202F, METHOD 105C COND. B
- TEMPERATURE CYCLE: MIL-STD-202F, METHOD 107D COND. A

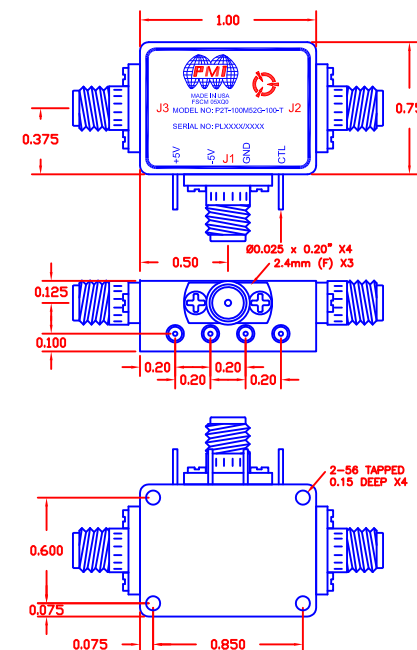
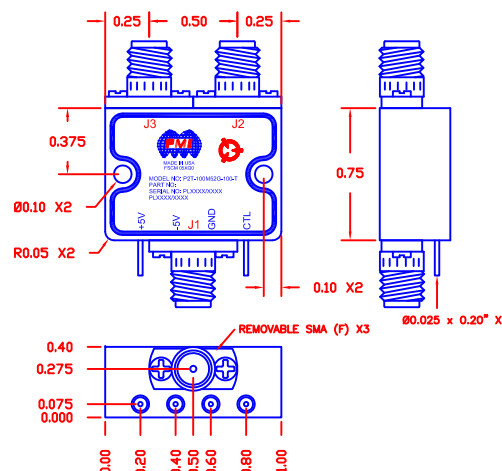
NOTE: SPECIFICATIONS WILL VARY OVER OPERATING TEMPERATURE

NOTE: THE ABOVE SPECIFICATIONS ARE SUBJECT TO CHANGE OR REVISION

ALL DIMENSIONS ARE IN INCHES
TOLERANCES:
X.XX ±0.020
X.XXX ±0.010

PMI CONFIDENTIAL AND PROPRIETARY

REVISIONS				
ZONE	REV.	DESCRIPTION	DATE	APPROVED
	A1	ORIGINAL RELEASE	04/14/20	



PLANAR MONOLITHICS INDUSTRIES, INC.

7311-F GROVE ROAD

FREDERICK, MARYLAND 21704 USA

TEL: (301)-662-5019, FAX: (301)-662-1731

WEB: www.pmi-rf.com, EMAIL: sales@pmi-rf.com

ISO 9001 CERTIFIED

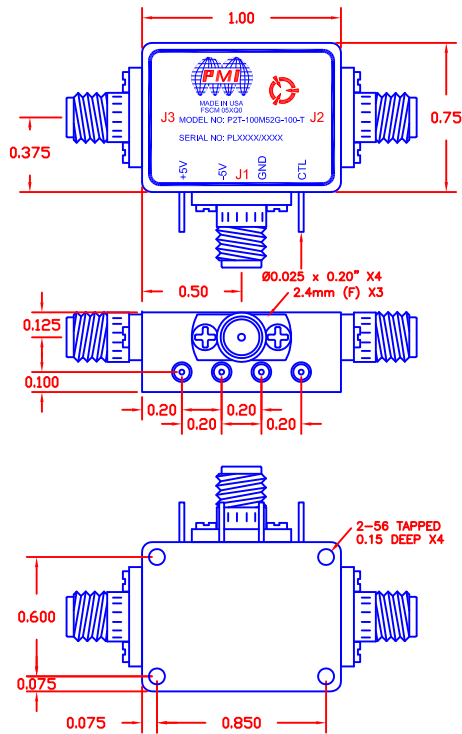
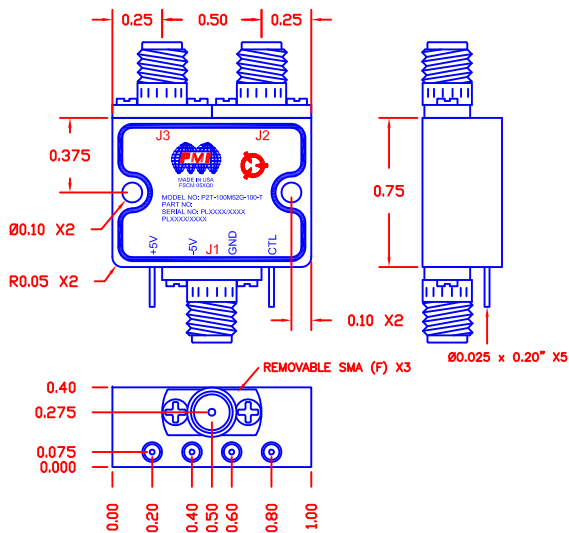


APPROVALS		DATE		TITLE	
DRAWN		04/14/20		PRODUCT FEATURE	
CHECKED				P2T-100M52G-100-T	
ISSUED					
SIZE	FSCM NO.	DWG NO.	REV.		
A	05XQ0	27038440	A1		
SCALE	N:S	SHEET	1 OF 2		

DESCRIPTION

PMI MODEL P2T-100M52G-100-T IS AN ABSORPTIVE, SINGLE POLE TWO THROW PIN DIODE SWITCH THAT OPERATES OVER THE 100 MHz TO 52 GHz FREQUENCY RANGE. IT FEATURES LOW INSERTION LOSS AND HIGH ISOLATION IN A SLIMLINE PACKAGE. THIS MODEL ALSO INCORPORATES A TTL COMPATIBLE DRIVER FOR EASE OF SYSTEM INTEGRATION.

REVISIONS				
ZONE	REV.	DESCRIPTION	DATE	APPROVED
	A1	ORIGINAL RELEASE	04/14/20	



MECHANICAL OUTLINE

ALL DIMENSIONS ARE IN INCHES
TOLERANCES:
X.XX ±0.020
X.XXX ±0.010

ENVIRONMENTAL RATINGS

- TEMPERATURE: ——— -40 °C TO +85 °C (OPERATING)
-65 °C TO +125 °C (STORAGE)
- HUMIDITY: ——— MIL-STD-202F, METHOD 103B COND. B
- SHOCK: ——— MIL-STD-202F, METHOD 213B COND. B
- VIBRATION: ——— MIL-STD-202F, METHOD 204D COND. B
- ALTITUDE: ——— MIL-STD-202F, METHOD 105C COND. B
- TEMPERATURE CYCLE: ——— MIL-STD-202F, METHOD 107D COND. A

NOTE: SPECIFICATIONS WILL VARY OVER OPERATING TEMPERATURE
NOTE: THE ABOVE SPECIFICATIONS ARE SUBJECT TO CHANGE OR REVISION

PMI CONFIDENTIAL AND PROPRIETARY

7311-F GROVE ROAD
FREDERICK, MARYLAND 21704 USA
TEL: (301)-662-5019, FAX: (301)-662-1731
WEB: www.pmi-rf.com, EMAIL: sales@pmi-rf.com
ISO 9001 CERTIFIED



PRODUCT FEATURE P2T-100M52G-100-T				
SMH	04/14/20	05XQ0	27038440	
SCALE N:S		2 OF 2		