

DESCRIPTION

PMI MODEL P4T-2G6G-60-R-SFF-SL-IND IS A REFLECTIVE, HIGH SPEED, SINGLE POLE FOUR THROW SWITCH CAPABLE OF SWITCHING WITHIN 25ns. THE FREQUENCY RANGE IS 2.0 GHz TO 6.0 GHz AND HAS 60dB MINIMUM ISOLATION. THIS MODEL IS SUPPLIED IN A SLIMLINE HOUSING THAT MEASURES 1.00" X 1.20" X 0.24".

SPECIFICATIONS

- FREQUENCY RANGE: 2.0 GHz TO 6.0 GHz
- IMPEDANCE: 50 Ω
- INPUT POWER: +27dBm MAX
- INPUT VSWR: 1.5:1 TYP
- INSERTION LOSS: 1.8dB TYP
- ISOLATION: 60dB MIN
- SWITCHING SPEED: 25ns MAX
- DC VOLTAGE: +5VDC @ 150mA TYP
-15VDC @ 50mA TYP
- CONTROL: SOLDER PIN
TTL Logic "0" = Low Loss
TTL Logic "1" = Isolation
C1 Controls J1 - J2
C2 Controls J1 - J3
C3 Controls J1 - J4
C4 Controls J1 - J5
- CONNECTORS IN/OUT: SMA (F)
- SIZE: (L) 1.00" X (W) 1.20" X (H) 0.24"
- FINISH: BLUE EPOXY POLIMIDE COATING IAW MIL-C-22750, TYPE I OVER EPOXY POLIMIDE PRIMER IAW MIL-P-23377, TYPE I, CLASS 1 OR 3.

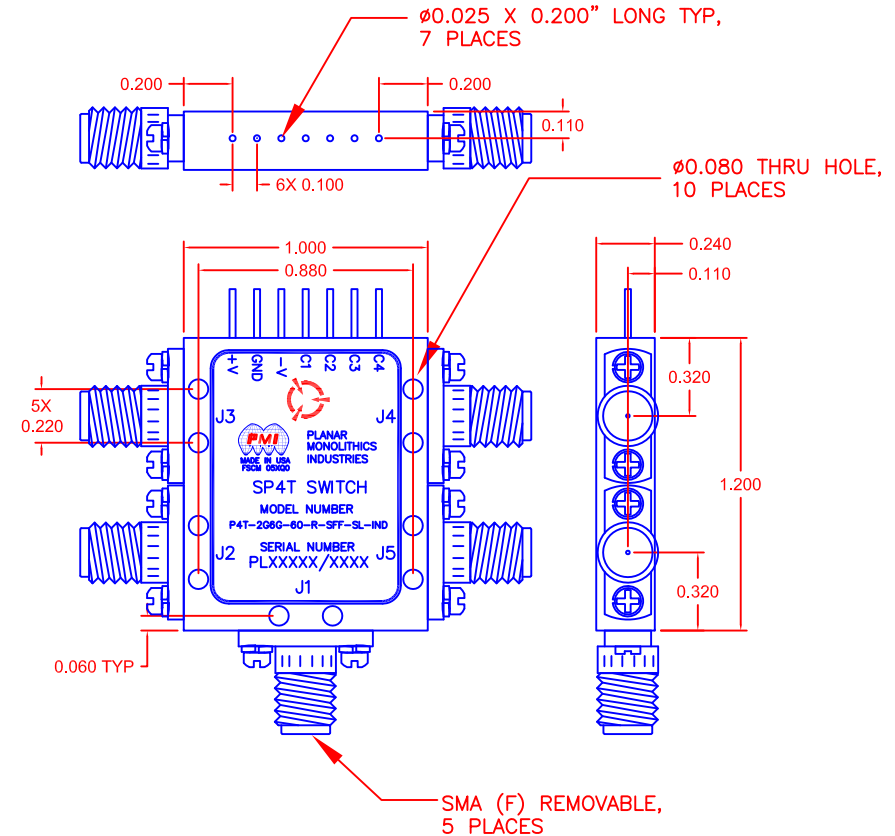
ENVIRONMENTAL RATINGS

- TEMPERATURE: -55°C TO + 85°C (OPERATING)
-65°C TO +125°C (STORAGE)
- HUMIDITY: MIL-STD-202F, METHOD 103B COND. B
- SHOCK: MIL-STD-202F, METHOD 213B COND. B
- VIBRATION: MIL-STD-202F, METHOD 204D COND. B
- ALTITUDE: MIL-STD-202F, METHOD 105C COND. B
- TEMPERATURE CYCLE: MIL-STD-202F, METHOD 107D COND. A

NOTE: SPECIFICATIONS WILL VARY OVER OPERATING TEMPERATURE
NOTE: THE ABOVE SPECIFICATIONS ARE SUBJECT TO CHANGE OR REVISION

REVISIONS				
ZONE	REV.	DESCRIPTION	DATE	APPROVED
	-	PRELIMINARY	2/14/15	

MECHANICAL OUTLINE



PMI CONFIDENTIAL AND PROPRIETARY

PLANAR MONOLITHICS INDUSTRIES, INC.

7311-F GROVE ROAD
FREDERICK, MARYLAND 21704 USA
TEL: 301-662-5019 FAX: 301-662-1731
WEBSITE: www.pmi-rf.com
E-MAIL: sales@pmi-rf.com
ISO 9001 CERTIFIED



ALL DIMENSIONS ARE IN INCHES
TOLERANCES:
X.XX ±0.020
X.XXX ±0.010

APPROVALS		DATE	TITLE		
DRAWN <i>X. MASON</i>		2/14/15	PRODUCT FEATURE P4T-2G6G-60-R-SFF-SL-IND		
CHECKED			SIZE A	FSCM NO. 05XQ0	DWG NO. PRELIMINARY
ISSUED			SCALE N:S	SHEET 1 OF 1	