

DESCRIPTION

PMI MODEL SDLVA-1G2G-65-SFF IS AN AC COUPLED 1.0 – 2.0 GHz DETECTION LOG VIDEO AMPLIFIER. THE MINIMUM LOGGING RANGE IS -60 TO +5 dBm WITH A LOG SLOPE OF 21 mV / dB.

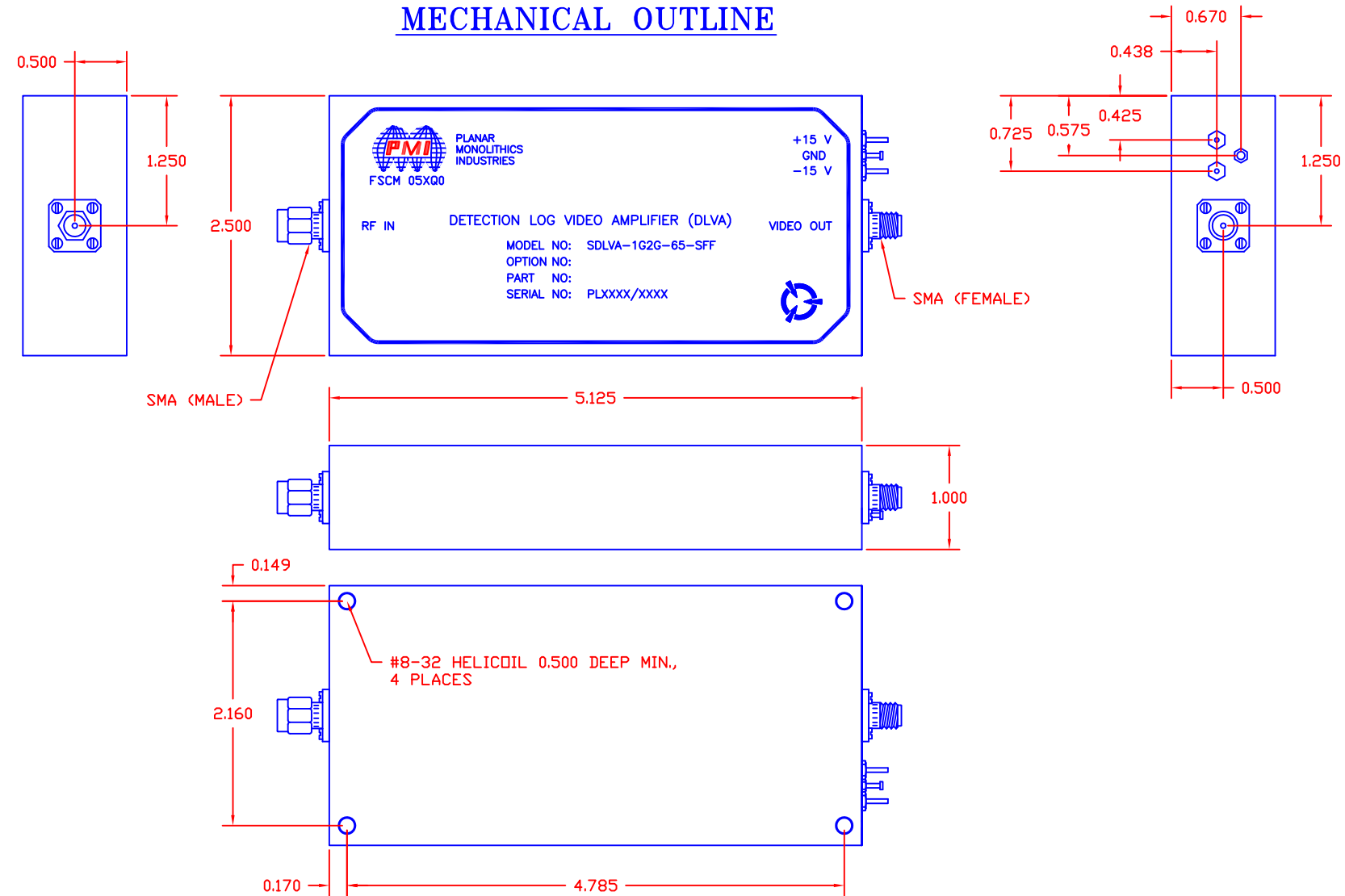
REVISIONS				
ZONE	REV.	DESCRIPTION	DATE	APPROVED
	A	ORIGINAL RELEASE	2/3/10	

SPECIFICATIONS

- FREQUENCY RANGE: 1.0 GHz TO 2.0 GHz
- VSWR: 2.0 : 1 TYPICAL
- MAX INPUT POWER: +20 dBm MAX
- Tss: -65 dBm MIN
- LOGGING RANGE: -60 TO +5 dBm
- LOG SLOPE: 21 mV / dB NOMINAL
- RISE TIME: 20 nS MAX
- FALL TIME: 100 nS MAX
- SETTling TIME: 30 nS MAX
(WITHIN ± 0.5 dB OF FINAL VALUE)
- OUTPUT OVERSHOOT: 1.0 dB MAX

- OPERATING TEMPERATURE: -54°C TO +95°C
- DC VOLTAGE: ± 15 VDC @ 100 mA MAX EACH SUPPLY
- CONNECTORS IN/OUT: SMA (M) RF INPUT, SMA (F) VIDEO OUTPUT
- SIZE: 5.125" X 2.50" X 1.00"
- FINISH: 50 uin. GOLD PLATING MIN. OVER
COPPER FLASH OVER NICKEL FLASH
PER MIL-G 45204 TYPE 2

MECHANICAL OUTLINE



ENVIRONMENTAL RATINGS

- TEMPERATURE: -54°C TO +71°C (OPERATING)
-65°C TO +125°C (STORAGE)
- HUMIDITY: MIL-STD-810F, METHOD 507.4
- SHOCK: MIL-STD-810F, METHOD 516.5
- VIBRATION: MIL-STD-810F, METHOD 514.5
- ALTITUDE: MIL-STD-810F, PROCEDURE II
- TEMPERATURE CYCLE: MIL-STD-810F, METHOD 503.4, PROCEDURE I

NOTE: SPECIFICATIONS WILL VARY OVER OPERATING TEMPERATURE
NOTE: THE ABOVE SPECIFICATIONS ARE SUBJECT TO CHANGE OR REVISION

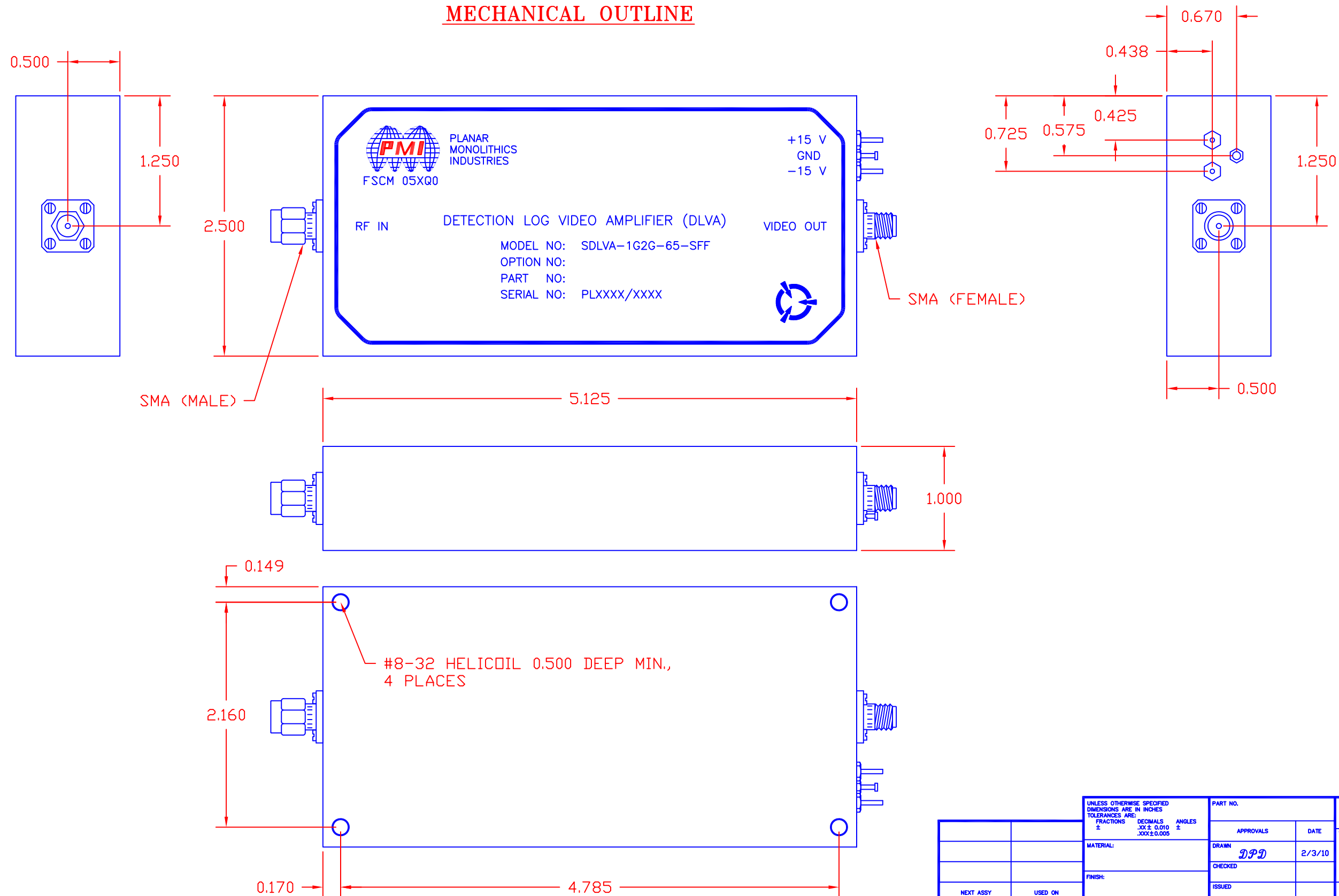
UNLESS OTHERWISE SPECIFIED DIMENSIONS ARE IN INCHES TOLERANCES ARE: FRACTIONS ± DECIMALS ± ANGLES ±		PART NO.		PLANAR MONOLITHICS INDUSTRIES 5715 INDUSTRY LANE UNIT 11 FREDERICK, MARYLAND	
APPROVALS		DATE		TITLE	
DRAWN <i>DPD</i>		2/3/10		OUTLINE DRAWING SDLVA-1G2G-65-SFF	
CHECKED				SIZE FSCM NO. DWG NO. REV.	
ISSUED				B 27012081 A	
NEXT ASSY USED ON				SCALE N/S SHEET 1 OF 2	
APPLICATION		DO NOT SCALE DRAWING			

DESCRIPTION

PMI MODEL SDLVA-1G2G-65-SFF IS AN AC COUPLED 1.0 - 2.0 GHz DETECTION LOG VIDEO AMPLIFIER. THE MINIMUM LOGGING RANGE IS -60 TO +5 dBM WITH A LOG SLOPE OF 21 mV / dB.

REVISIONS				
ZONE	REV.	DESCRIPTION	DATE	APPROVED
	A	ORIGINAL RELEASE	2/3/10	

MECHANICAL OUTLINE



UNLESS OTHERWISE SPECIFIED DIMENSIONS ARE IN INCHES TOLERANCES ARE: FRACTIONS ± DECIMALS .XX ± 0.010 ANGLES ± .XXX ± 0.005		PART NO.	PLANAR MONOLITHICS INDUSTRIES 5715 INDUSTRY LANE UNIT 11 FREDERICK, MARYLAND	
APPROVALS		DATE	TITLE	
DRAWN <i>DPD</i>		2/3/10	OUTLINE DRAWING SDLVA-1G2G-65-SFF	
CHECKED			SIZE	REV.
ISSUED			B	A
NEXT ASSY	USED ON		FSCM NO.	DWG NO.
				27012081
APPLICATION		DO NOT SCALE DRAWING	SCALE	SHEET
			N/S	2 OF 2