

DESCRIPTION

THE PMI MODEL SDLVA-30M-80-12V IS AN SDLVA WHICH OPERATES FROM 25 TO 35 MHZ AND HAS A TYPICAL DYNAMIC RANGE OF 80 DB.

SPECIFICATIONS

- FREQUENCY RANGE: 25 TO 35 MHZ (MIN)
- DYNAMIC RANGE -80 TO 0 DBM TYPICAL
- LOG SLOPE 25MV/DB +/-5%
- DC OFFSET VARIATION +/- 50 MV
- RISE TIME 100 NSEC (MAX)
- VSWR INPUT: 1.5:1 TYPICAL
- OPERATING INPUT POWER: +13 dBm (MAX)
- LIMITED OUTPUT 0 DBM NOMINAL
- OUTPUT VSWR 2.0:1 TYPICAL
- LINEARITY ERROR +/- 1.5 DB (MAX) -80 TO 0 DBM
- POWER SUPPLY
 - +V: +12V @ 175mA MAXIMUM
 - V: -12V @ 100mA MAXIMUM
- SIZE: 3.51" x 1.50" x 0.47"
- WEIGHT: ≤3.0 OZ.
- FINISH: BLUE EPOXY POLIMIDE COATING IAW MIL-C-22750, TYPE I OVER EPOXY POLIMIDE PRIMER MIL-DTL-53022E TYPE IV, LEAD AND CHROMATE FREE.

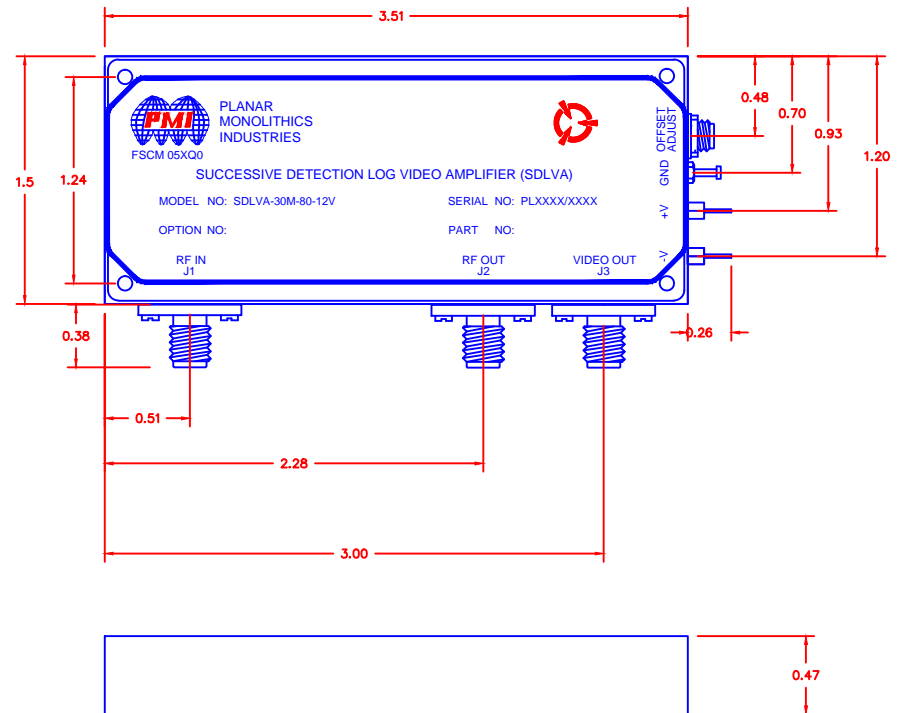
ENVIRONMENTAL RATINGS

- **TEMPERATURE:** -40°C TO +85°C (OPERATING)
..... -65°C TO +125°C (STORAGE)
- **HUMIDITY:** MIL-STD-202F, METHOD 103B COND. B
- **SHOCK:** MIL-STD-202F, METHOD 213B COND. B
- **VIBRATION:** MIL-STD-202F, METHOD 204D COND. B
- **ALTITUDE:** MIL-STD-202F, METHOD 105C COND. B
- **TEMPERATURE CYCLE:** MIL-STD-202F, METHOD 107D COND. A

NOTE: SPECIFICATIONS WILL VARY OVER OPERATING TEMPERATURE
NOTE: THE ABOVE SPECIFICATIONS ARE SUBJECT TO CHANGE OR REVISION

ALL DIMENSIONS ARE IN INCHES
TOLERANCES:
X.XX ±0.020
X.XXX ±0.010

REVISIONS				
ZONE	REV.	DESCRIPTION	DATE	APPROVED
	-	PRELIMINARY	2-8-21	
	1	ADDED TEMP, SLOPE & OFFSET	2-16-21	



PLANAR MONOLITHICS INDUSTRIES, INC.

7311-F GROVE ROAD
FREDERICK, MARYLAND 21704 USA
TEL: 301-662-5019 FAX: 301-662-1731
WEBSITE: www.planarmonolithics.com
E-MAIL: sales@planarmonolithics.com
ISO 9001:2000 CERTIFIED

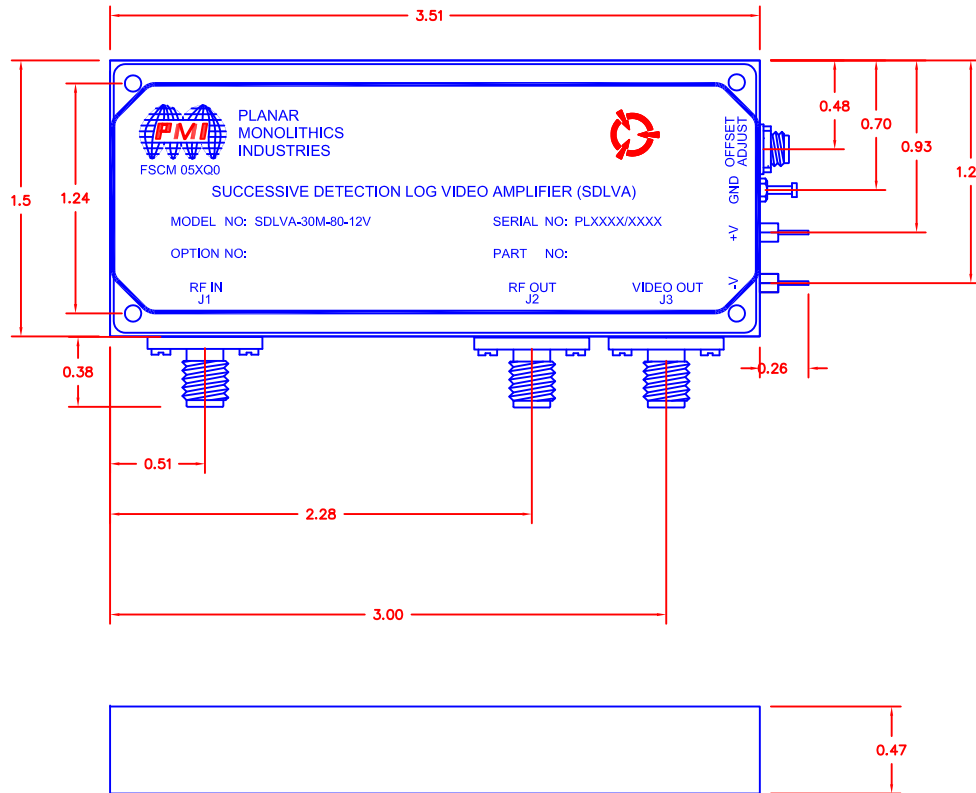


APPROVALS		DATE	TITLE		
DRAWN <i>JM</i>		2-8-21	PRODUCT FEATURE SDLVA-30M-80-12V 25 TO 35 MHZ SDLVA		
CHECKED			SIZE	FSCM NO.	DWG NO.
ISSUED			A	05XQ0	PRELIMINARY
			SCALE	N:S	SHEET 1 OF 3

DESCRIPTION

THE PMI MODEL SDLVA-30M-80-12V IS AN SDLVA WHICH OPERATES FROM 25 TO 35 MHZ AND HAS A TYPICAL DYNAMIC RANGE OF 80 DB.

MECHANICAL OUTLINE



ALL DIMENSIONS ARE IN INCHES
TOLERANCES:
X.XX ±0.020
X.XXX ±0.010

PLANAR MONOLITHICS INDUSTRIES, INC.

7311-F GROVE ROAD
FREDERICK, MARYLAND 21704 USA
TEL: 301-662-5019 FAX: 301-662-1731
WEBSITE: www.planarmonolithics.com
E-MAIL: sales@planarmonolithics.com
ISO 9001:2000 CERTIFIED

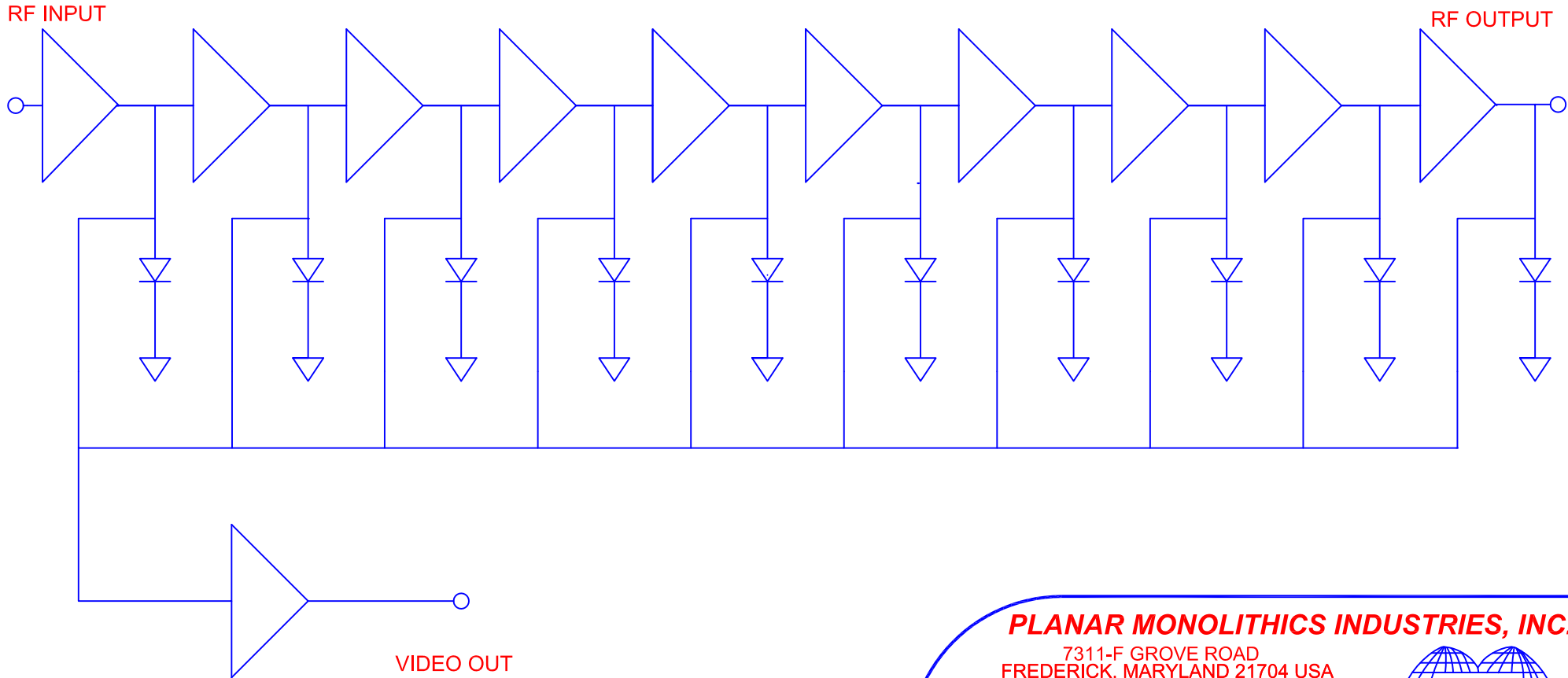


APPROVALS		DATE	TITLE			
DRAWN <i>JM</i>		2-8-21	MECHANICAL OUTLINE			
CHECKED			SDLVA-30M-80-12V			
ISSUED			25-35 MHz SDLVA			
SIZE	FSCM NO.	DWG NO.	REV.			
A	05XQO	PRELIMINARY	-			
SCALE N:S			SHEET		2 OF 3	

DESCRIPTION

THE PMI MODEL SDLVA-30M-80-12V IS AN SDLVA WHICH OPERATES FROM 25 TO 35 MHZ AND HAS A TYPICAL DYNAMIC RANGE OF 80 DB.

FUNCTIONAL BLOCK DIAGRAM



CONFIDENTIAL AND PROPRIETARY

PLANAR MONOLITHICS INDUSTRIES, INC.

7311-F GROVE ROAD
 FREDERICK, MARYLAND 21704 USA
 TEL: 301-662-5019 FAX: 301-662-1731
 WEBSITE: www.planarmonolithics.com
 E-MAIL: sales@planarmonolithics.com
 ISO 9001:2000 CERTIFIED



APPROVALS		DATE	TITLE			
DRAWN		2-8-21	FUNCTIONAL BLOCK DIAGRAM			
CHECKED			SDLVA-30M-80-12V			
ISSUED			25 to 35 MHz SDLVA			
SIZE	FSCM NO.	DWG NO.	REV.			
A	05XQ0	PRELIMINARY	-			
SCALE N:S			SHEET		3 OF 3	