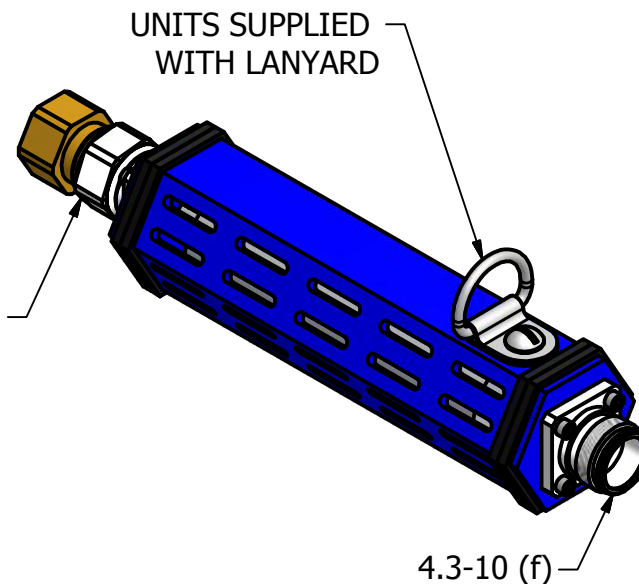
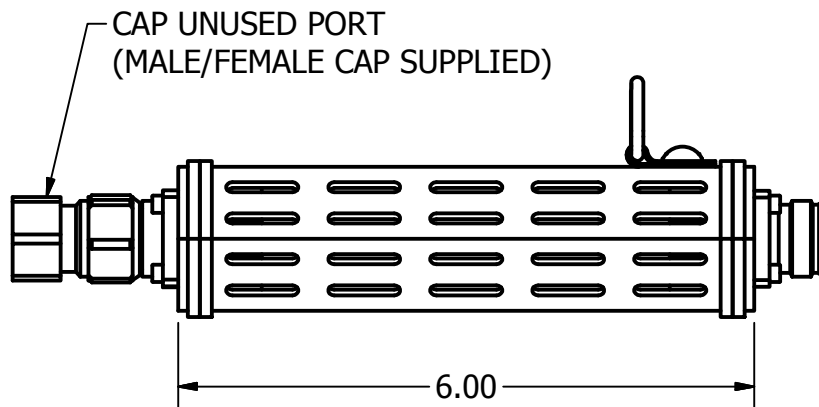
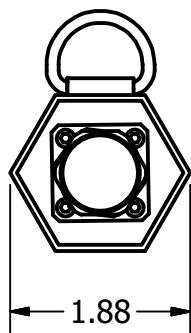


REVISION HISTORY				
ZONE	REV	DESCRIPTION	DATE	APPROVED
	4	ADDED NEX10 OPTION	6/15/2022	DM
	5	REVISED POWER RATING	9/9/2022	DM
	6	INTRODUCE MODEL NUMBER	3/12/2026	MS



FREQUENCY: 600-6000 MHz  
 RETURN LOSS: 17 dB MAX; 24 dB TYP  
 PIM: 160 dBc  
 POWER: 60 W


**MODELS:**

ANY CONFIGURATION WITH MALE OR FEMALE  
 DIN 7/16, 4.3-10, AND TYPE N CONNECTORS

**COMMON PART NUMBERS:**

TA-A83DMDF (7-16 MALE AND 7/16 FEMALE)  
 TA-A83D43MD43F (4.3-10 MALE AND 4.3-10 FEMALE)  
 TA-A83NMNF (N MALE AND N FEMALE)

PROPERTY OF R&D MICROWAVES LLC

DRAWN mclaughlind	10/31/2017		R&D Microwaves LLC, USA	
CHECKED TB			TITLE	
QA MdB	11/7/2017	TA-A83, LOW PIM TERMINATION		
MFG		SIZE A	DWG NO TA-A83-OLrev6	REV 6
APPROVED		SCALE 1:2	SHEET 1 OF 1	