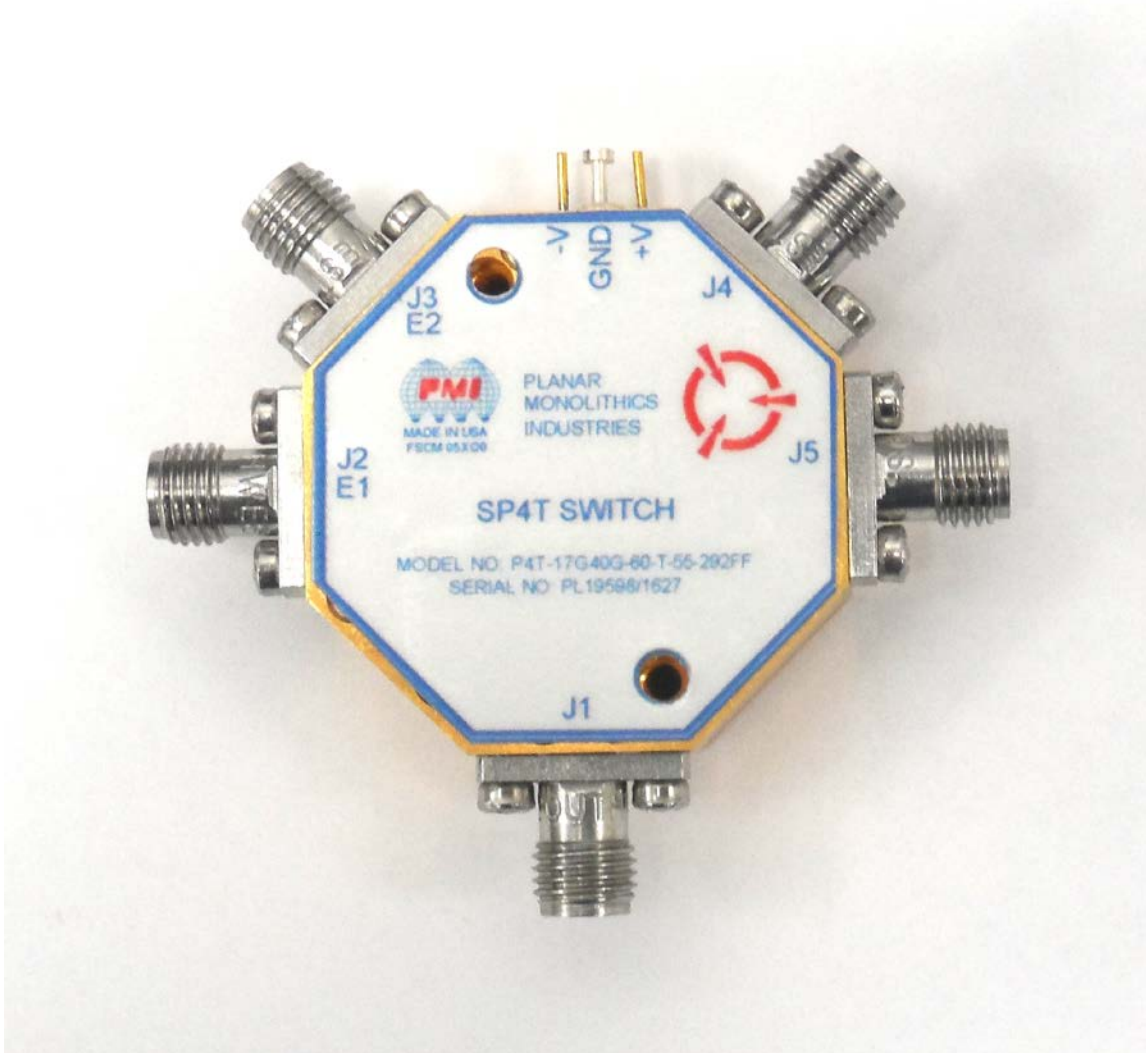




**TYPICAL CHARACTERISTICS
ON
P4T-17G40G-60-T-55-292FF**

**PMI MODEL: P4T-17G40G-60-T-55-292FF IS A SINGLE POLE, FOUR THROW
ABSORPTIVE SWITCH. THIS MODEL HAS THE FOLLOWING
SPECIFICATIONS.**



June 30, 2016

DESIGNED BY: PMI ENGINEERING

TESTED & REPORTED BY: K. Mansfield



**TYPICAL CHARACTERISTICS
ON
P4T-17G40G-60-T-55-292FF**

TABLE OF CONTENTS

Outline Drawing.....Page 3

Summary Test Data.....Page 4

Insertion Loss and VSWR.....Page 5

Insertion Loss Flatness.....Page 6

Isolation.....Page 7

Switching Speed..... Page 8



TYPICAL CHARACTERISTICS ON P4T-17G40G-60-T-55-292FF

DESCRIPTION

PMI MODEL: P4T-17G40G-60-T-55-292FF IS A SINGLE POLE FOUR THROW ABSORPTIVE SWITCH. THIS MODEL HAS THE FOLLOWING SPECIFICATIONS:

SPECIFICATIONS

- FREQUENCY RANGE: 17 TO 40 GHz
- INSERTION LOSS: 6 dB MAXIMUM
- INSERTION LOSS FLATNESS: ±1.5 dB OVER FULL BAND
- ISOLATION: 60 dB MINIMUM
- VSWR: 2.0:1 MAXIMUM
- POWER HANDLING: 200 mW CW (+23 dBm CW) MINIMUM
- SWITCHING SPEED: 10% TO 90% 100 ns MAXIMUM
- CONTROL: TTL CONTROL - SEE LOGIC TABLE
- POWER SUPPLY: +5 VDC @ 100 mA MAXIMUM
-5 VDC @ 100 mA MAXIMUM
- CONNECTORS: 2.92mm FEMALE
- CONTROL/POWER: SOLDER PINS
- SIZE: (L) 1.25" (31.75) x (W) 1.25" (31.75) x (H) 0.50" (12.70)
- WEIGHT: 1.5 oz TYPICAL, 1.75 oz MAXIMUM
- FINISH: GOLD PLATED

LOGIC TABLE

2 BIT DECODER

E1	E2	FUNCTION
0	0	J1-J2 "Low Loss"
0	1	J1-J3 "Low Loss"
1	0	J1-J4 "Low Loss"
1	1	J1-J5 "Low Loss"

ENVIRONMENTAL RATINGS

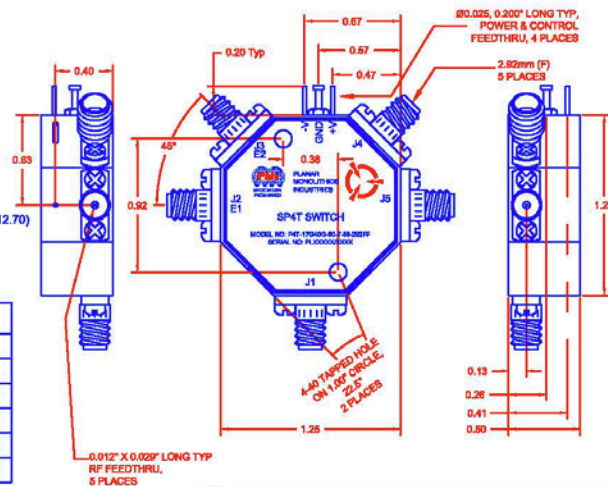
- TEMPERATURE: -65 °C TO +85 °C (OPERATING)
-65 °C TO +125 °C (STORAGE)
- HUMIDITY: MIL-STD-202, METHOD 103B COND. B
- SHOCK: MIL-STD-202, METHOD 213B COND. B
- VIBRATION: MIL-STD-202, METHOD 204D COND. B
- ALTITUDE: MIL-STD-202, METHOD 105C COND. B
- TEMPERATURE CYCLE: MIL-STD-202, METHOD 107D COND. A
- ESD RESISTANCE: HUMAN BODY MODEL CLASS 0

NOTE: SPECIFICATIONS WILL VARY OVER OPERATING TEMPERATURE.
NOTE: THE ABOVE SPECIFICATIONS ARE SUBJECT TO CHANGE OR REVISION

PMI CONFIDENTIAL AND PROPRIETARY

REVISIONS				
ZONE	REV.	DESCRIPTION	DATE	APPROVED
	1	ORIGINAL RELEASE	2/1/16	

MECHANICAL OUTLINE



PLANAR MONOLITHICS INDUSTRIES, INC.
7311-F GROVE ROAD
FREDERICK, MARYLAND 21704 USA
TEL: (301)-662-5019, FAX: (301)-662-1731
WEB: www.pmi-rf.com, EMAIL: sales@pmi-rf.com
ISO 9001 CERTIFIED



APPROVALS		DATE	TITLE		
DRAWN: <i>M. Berry</i>		2/1/16	PRODUCT FEATURE P4T-17G40G-60-T-55-292FF		
DESIGNED:			SIZE: A	FORM NO.: 05XQ0	DWG NO.: 27029291
REVISED:			SCALE: N:S		REV: 1
					SHEET: 1 OF 1

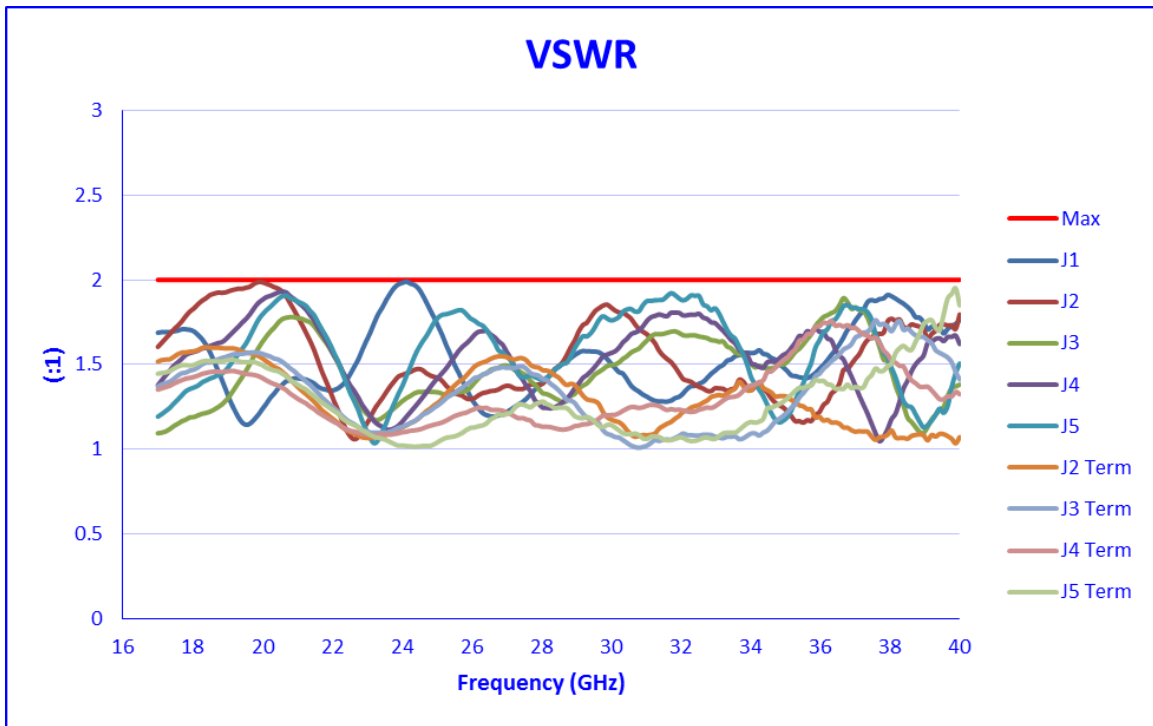
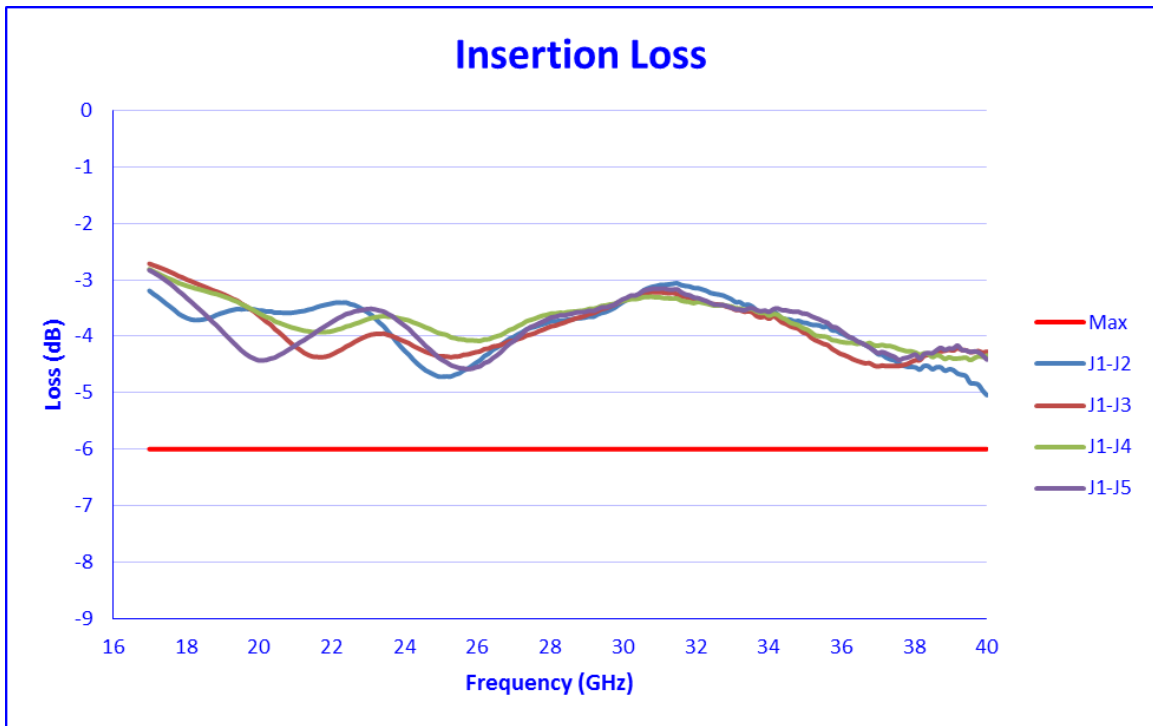


**TYPICAL CHARACTERISTICS
ON
P4T-17G40G-60-T-55-292FF**

TEST ITEM NO.	PARAMETERS	SPECIFIED VALUE	TEST RESULTS	QA QC	
1	Frequency Range:	17 TO 40 GHz	17 TO 40 GHz		
2	Insertion Loss:	6.0 dB Max	5.1 dB (See Plot)		
3	Insertion Loss Flatness:	±1.5 dB Over Full Band	1.0 dB -1.0 dB (See Plot)		
4	Isolation:	60 dB Min	66 (See Plot)		
5	VSWR:	2.0:1 Max	2.0 :1 (See Plot)		
6	Power Handling:	>200 mW CW (+23 dBm CW)	200 mW		
7	Switching Speed:	10% to 90% <100 ns	<20 ns (See Plot)		
8	DC Supply:	+5 VDC @ 100 mA Max -5 VDC @ 100 mA Max	43 mA 44 mA		
9	Control Signal:	LOGIC TABLE		Pass	
		2 BIT DECODER			
		E1	E2		Function
		0	0		J1-J2 "Low Loss"
		0	1		J1-J3 "Low Loss"
1	0	J1-J4 "Low Loss"			
1	1	J1-J5 "Low Loss"			

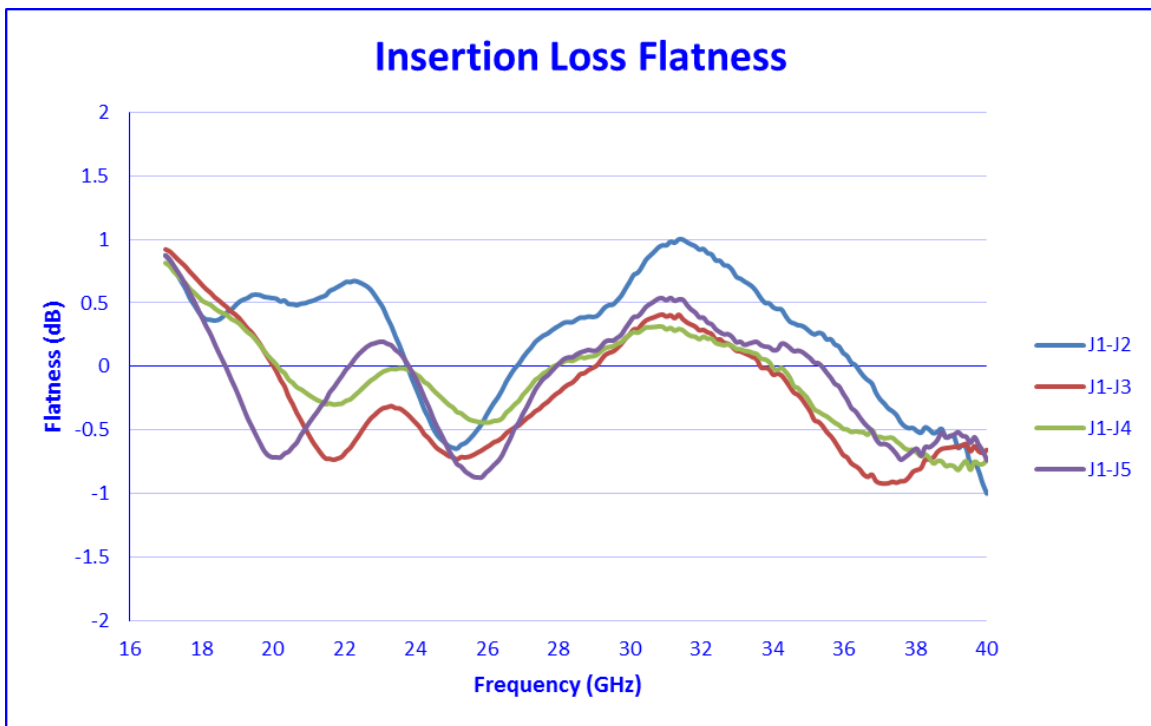


**TYPICAL CHARACTERISTICS
ON
P4T-17G40G-60-T-55-292FF**



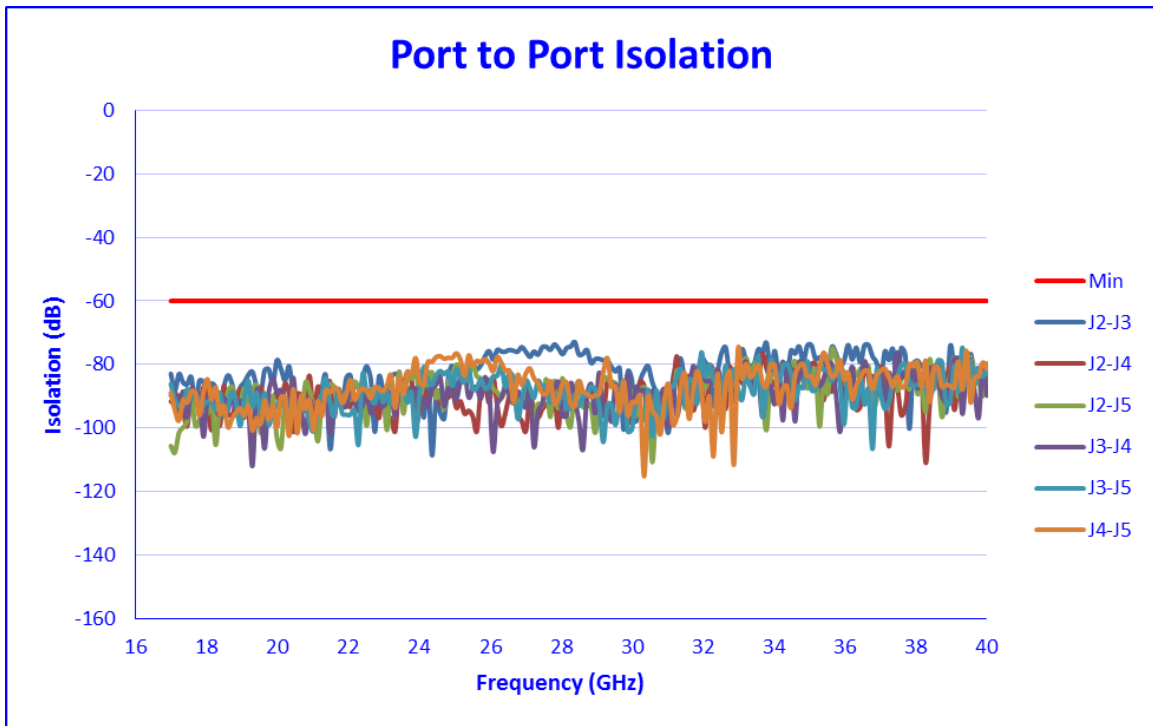
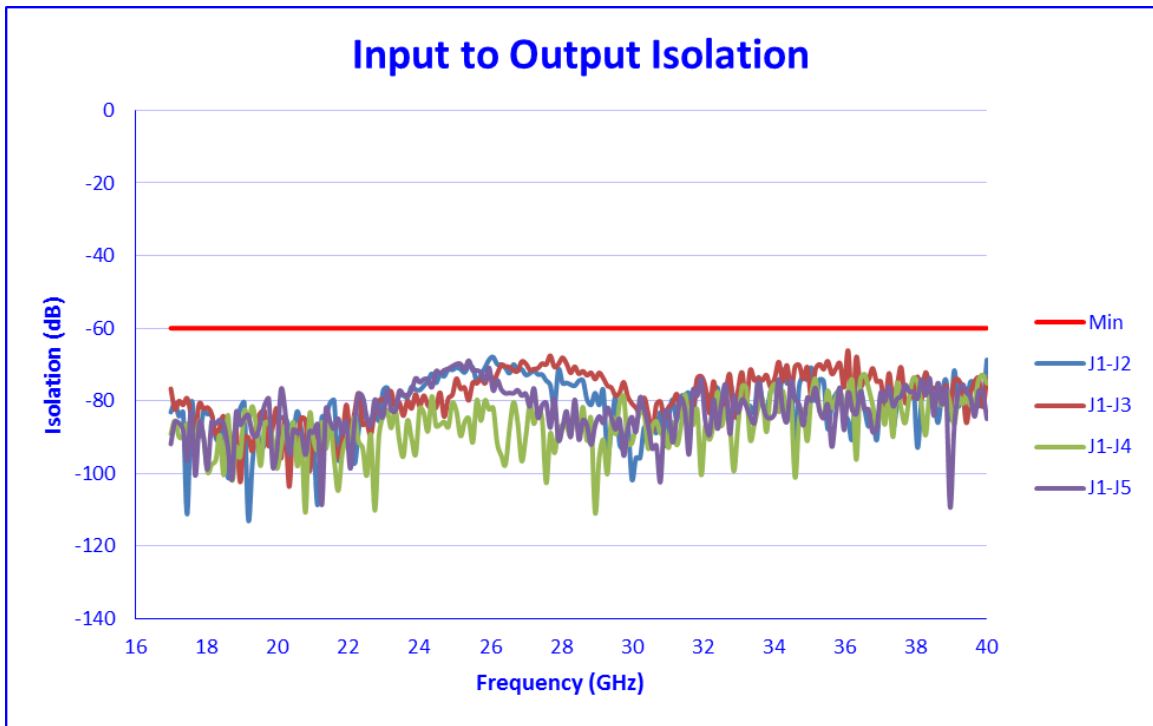


**TYPICAL CHARACTERISTICS
ON
P4T-17G40G-60-T-55-292FF**





**TYPICAL CHARACTERISTICS
ON
P4T-17G40G-60-T-55-292FF**

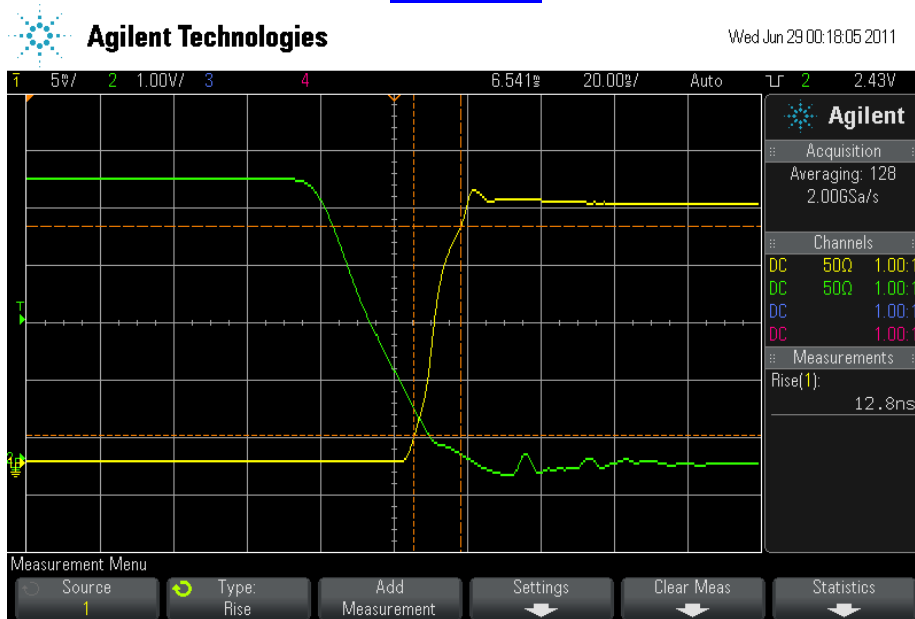




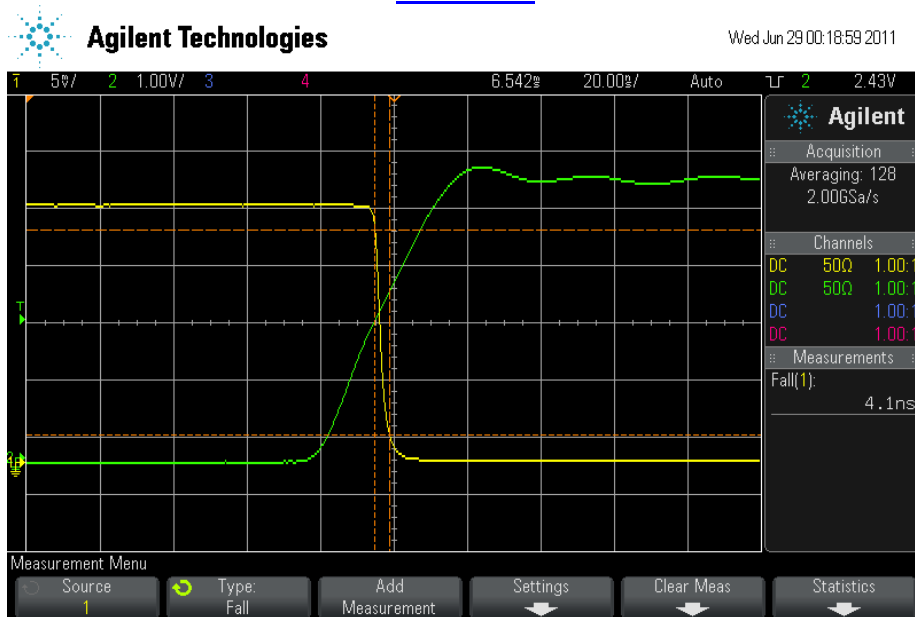
TYPICAL CHARACTERISTICS ON P4T-17G40G-60-T-55-292FF

Switching Speed TYP.

Rise Time



Fall Time



Green = TTL Yellow = RF