



Typical Characteristics on BPF-1G1D85G-850M-SM

PMI MODEL NUMBER BPF-1G1D85G-850M-SM IS A BANDPASS FILTER WITH A 1 dB BANDWIDTH OF 850 MHz MINIMUM COVERING 1000 TO 1850 MHz. THE FILTER IS BUILT IN A SURFACE MOUNT PACKAGE TO BE USED IN INTEGRATED MODULES.



Reported By: Dave Durbin

December 1, 2020



Typical Characteristics on BPF-1G1D85G-850M-SM

OUTLINE DRAWING

DESCRIPTION:

PMI MODEL NUMBER BPF-1G1D85G-850M-SM IS A BANDPASS FILTER WITH A 1 dB BANDWIDTH OF 850 MHz MINIMUM COVERING 1000 TO 1850 MHz. THE FILTER IS BUILT IN A SURFACE MOUNT PACKAGE TO BE USED IN INTEGRATED MODULES.

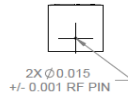
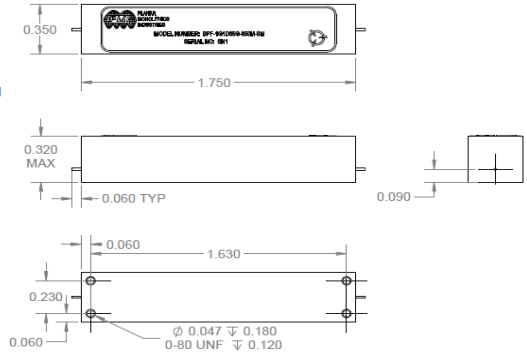
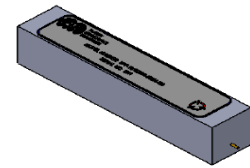
SPECIFICATIONS:

- 1 dB PASSBAND FREQUENCY RANGE:..... 1 GHz TO 1.85 GHz MIN
- PASSBAND BANDWIDTH:..... 850 MHz MIN
- PASSBAND VSWR:..... 1.5:1 TYP, 2.0:1 MAX
- PASSBAND INSERTION LOSS:..... 2.2 dB MAXIMUM
- REJECTION:
 - 0.1 TO 0.89 GHz:..... -60 dBc MINIMUM
 - 1.98 TO 6.0 GHz:..... -60 dBc MINIMUM
- CONNECTORS:..... DROP-IN FILTER, 0.015" DIAMETER RF PIN

ENVIRONMENTAL RATINGS:

- TEMPERATURE:..... -40°C TO +85°C (OPERATING)
-65°C TO +125°C (STORAGE)

DATE	REV	DESCRIPTION	DATE	APPROVED
11/08/00	A1	ORIGINAL RELEASE		
11/08/00	B1	UPDATED SPECS		
11/08/00	C1	UPDATED SPECS		



PMI CONFIDENTIAL AND PROPRIETARY

DESIGN: [] DRAWING: [] MATERIAL: [] FINISH: [] NEXT ASSEMBLY: [] APPLICATION: []		PART NO: APPROVALS: [] DATE: []	TITLE: 1000-1850 MHz BANDPASS FILTER BPF-1G1D85G-850M-SM REV: B DATE: 05X/00 PART NO: 27035185 SCALE: 2:1	PMI MONOLITHICS INDUSTRIES, INC. 7311-F GROVE ROAD FREDERICK, MD 21704 USA TEL: 301-662-5019 FAX: 301-662-1731 WWW.PMI-MONOLITHICS.COM E-MAIL: SALES@PMI-RF.COM © 2000 PMI
---	--	---	--	--

7311-F Grove Road Frederick, MD 21704 USA Phone: (301)662-5019 Fax: (301)662-1731
Email: sales@pmi-rf.com



Typical Characteristics on BPF-1G1D85G-850M-SM

SN1

SUMMARY TEST DATA ON BPF-1G1D85G-850M-SM

Customer: _____ Tested By: D. Durbin
 SO No: _____ Temperature: +25°C
 Model No: BPF-1G1D85G-850M-SM Date: 10/7/2020
 Serial No: SN1

TEST ITEM NO.	PARAMETERS	SPECIFIED VALUE	Test Results	QA QC
1	1 dB Passband	1 to 1.85 GHz MIN	991 MHz - 1851 MHz	
2	Passband Bandwidth	850 MHz MIN	859.09 MHz	
3	Rejection	-60 dBc MIN DC - 890 MHz -60 dBc MIN 1.98 - 6.0 GHz	-63.99 dBc @ DC - 890 MHz -60.23 dBc @ 1.98 - 6.0 GHz	
4	Passband VSWR:	1.5:1 TYP, 2.0:1 MAX	1.5:1	
5	Insertion Loss (1 dB Passband):	2.2 dB MAX	-1.98 dB	

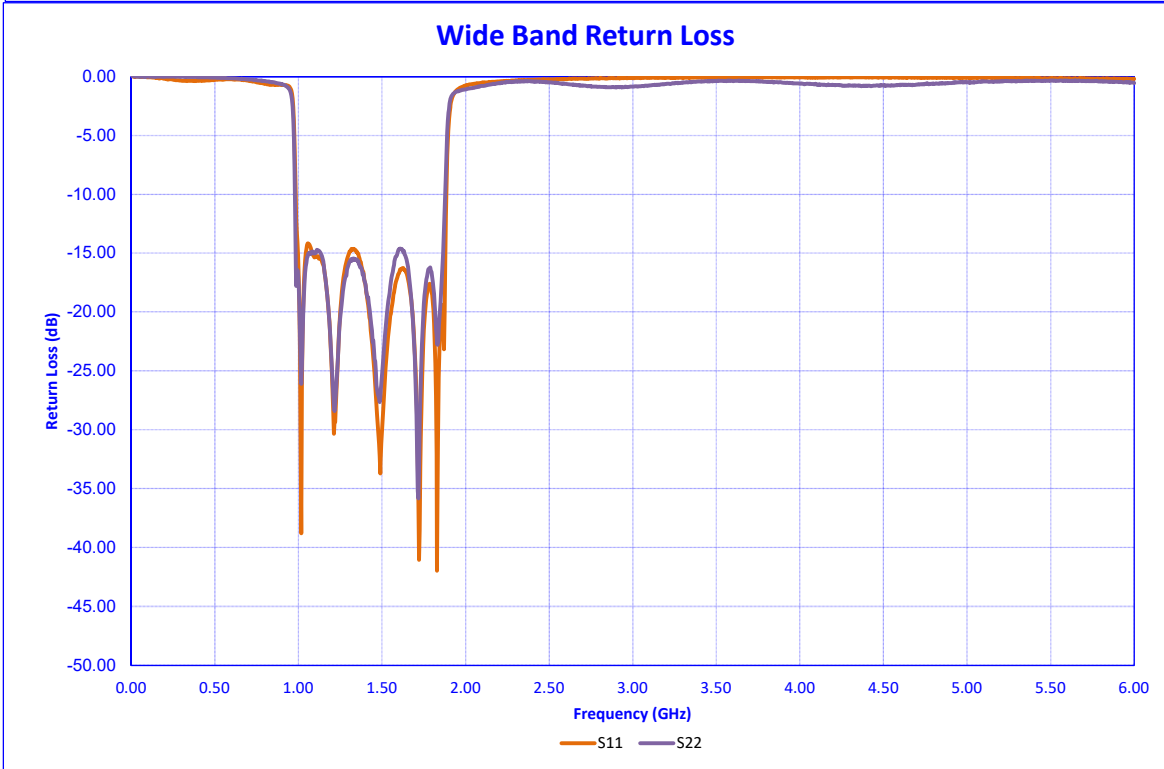
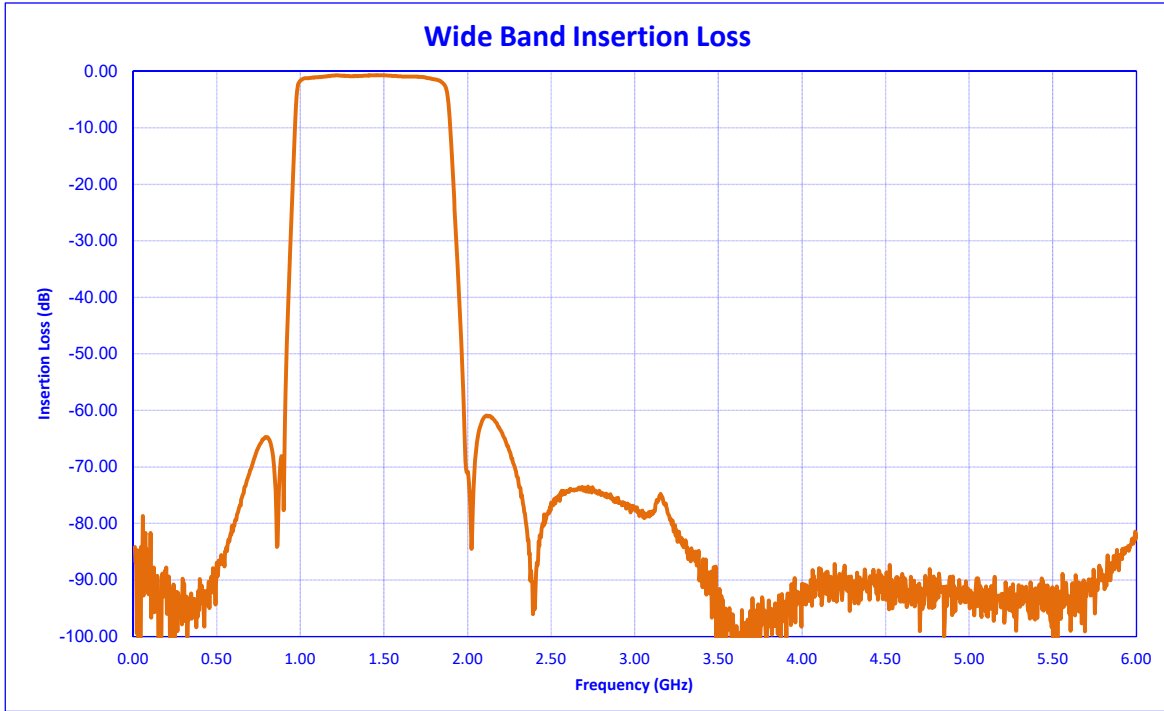
QA/QC Approval: _____ Date: _____

7311-F Grove Road Frederick, MD 21704 USA Phone: (301)662-5019 Fax: (301)662-1731
 Email: sales@pmi-rf.com



Typical Characteristics on BPF-1G1D85G-850M-SM

SN1





Typical Characteristics on BPF-1G1D85G-850M-SM

SN1

