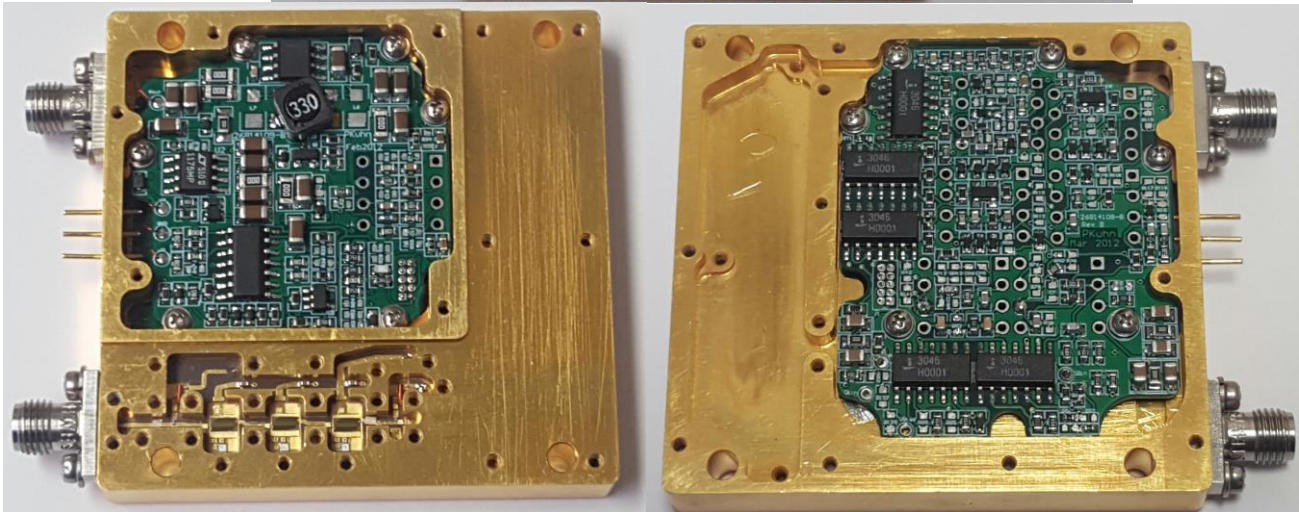




Typical Characteristics for SDLVA-100M18G-CW-70-MAH-OPT500M-NORF

PLANAR MONOLITHICS INDUSTRIES MODEL NUMBER: SDLVA-100M18G-CW-70-MAH-OPT500M-NORF IS A CW-IMMUNE SUCCESSIVE DETECTION LOG VIDEO AMPLIFIER OPERATING IN THE 500 MHz to 18 GHz FREQUENCY BAND.



April 28, 2017

Designed By: PMI Engineering

Reported By: Randy Combs

7311-F Grove Road Frederick, MD 21704 USA Phone: (301)662-5019 Fax: (301)662-1731
Email: sales@pmi-rf.com



**Typical Characteristics
for
SDLVA-100M18G-CW-70-MAH-OPT500M-NORF**

TABLE OF CONTENTS

1. Product Feature, Specifications & Mechanical Drawing:	Page 3-5
2. Summary Test Data:	Page 6,7
3. Tabulated Data @ 25°:.....	Page 8
4. Video Output and Linearity Error VS Input Power @ 25°C (Plot):	Page 9
5. Video Output and Linearity Error VS Input Power @ 25°C (3D-Plot):	Page 10
6. Tabulated Data @ -40°C:	Page 11
7. Video Output and Linearity Error VS Input Power @ -40°C: (Plot):.....	Page 12
8. Video Output and Linearity Error VS Input Power @ -40°C: (3D-Plot):	Page 13
9. Tabulated Data: @ 85°	Page 14
10. Video Output and Linearity Error VS Input Power @ 85° C: (Plot):	Page 15
11. Video Output and Linearity Error VS Input Power @ 85° C: (3D-Plot):	Page 16
12. Rise Time, Recovery Time:	Page 17
13. Pulse Considered CW, CW Rejection Time and Droop:	Page 18
14. Tangential Signal Sensitivity (TSS) @ -68 dBm:	Page 19
15. VSWR:.....	Page 20



Typical Characteristics for SDLVA-100M18G-CW-70-MAH-OPT500M-NORF

Product Feature

(Description, Specifications and Environmental Ratings)

REVISIONS				
ZONE	REV.	DESCRIPTION	DATE	APPROVED
	A1	ORIGINAL RELEASE	3/3/2017	

DESCRIPTION:
 PLANAR MONOLITHICS INDUSTRIES MODEL NUMBER: SDLVA-100M18G-CW-70-MAH-OPT500M-NORF IS A CW-IMMUNE SUCCESSIVE DETECTION LOG VIDEO AMPLIFIER OPERATING IN THE 500 MHZ-18 GHZ FREQUENCY BAND.

SPECIFICATIONS:

- FREQUENCY RANGE: 500 MHZ-18 GHZ
- FREQUENCY FLATNESS: ±2.0 dB MAX.
- TSS: -68 dBm MIN., -70dBm TYP.
- VSWR: 2.0:1 MAX.
- VI (LOG VIDEO SIGNAL AMPLITUDE): 1 VOLT MAX.
- LOG SLOPE: 10mV/dB INTO A 50-OHM LOAD ±1mV MAX.
- LOG RANGE: -65 TO +5 dBm MIN.
- LOG LINEARITY: ±1.75dB (-40°C TO +85°C) MAX.
- PULSE RANGE: 100ns TO 250 us
- RISE TIME: 35ns MAX.
- SETTILING TIME TO ±1dB: 50ns TYP.
- RECOVERY TIME: 350ns MAX.
- CW IMMUNITY RANGE: TSS TO -45 dBm (1dB DEGRADATION)
- PULSE CONSIDERED "CW": 1 ms TYP.
- REJECTION TIME: 1 ms TYP.
- DROOP: 1dB MAX.

- POWER SUPPLY: ±12 VDC TO ±15 VDC.
- DIMENSIONS: 2.30" X 2.20" X 0.36"
- CONNECTORS: SMA FEMALE
- FINISH: GOLD PLATED

ENVIRONMENTAL RATINGS:

- TEMPERATURE: -40°C TO +85°C (OPERATING)
 *OPERATING DOWN TO -54°C WITH DEGRADED SPECIFICATIONS
 -54°C TO +100°C (STORAGE)
- HUMIDITY: MIL-STD-202G, METHOD 103B COND. B
- SHOCK: MIL-STD-202G, METHOD 213B COND. B
- VIBRATION: MIL-STD-202G, METHOD 204D COND. B
- ALTITUDE: MIL-STD-202G, METHOD 105C COND. B
- TEMPERATURE CYCLE: MIL-STD-202G, METHOD 107D COND. A

NOTE: SPECIFICATIONS WILL VARY OVER OPERATING TEMPERATURE
 NOTE: THE ABOVE SPECIFICATIONS ARE SUBJECT TO CHANGE OR REVISION

PMI CONFIDENTIAL AND PROPRIETARY

PLANAR MONOLITHICS INDUSTRIES, INC.
 7311-F GROVE ROAD
 FREDERICK, MARYLAND 21704 USA
 TEL: 301-662-5019 FAX: 301-662-1731
 WEBSITE: www.pmi-rf.com
 E-MAIL: sales@pmi-rf.com
 ISO 9001 CERTIFIED

APPROVALS		DATE	TITLE	
DRAWN	M. Hanken	3/3/2017	PRODUCT FEATURE	
CHECKED			SIZE	REV.
			A	A1
ISSUED			FSQM NO.	DWG NO.
			05XQ0	27031880
			SCALE	SHEET
			N: S	1 OF 3

ALL DIMENSIONS ARE IN INCHES
 TOLERANCES:
 X.XXX ±0.020
 X.XXX ±0.010

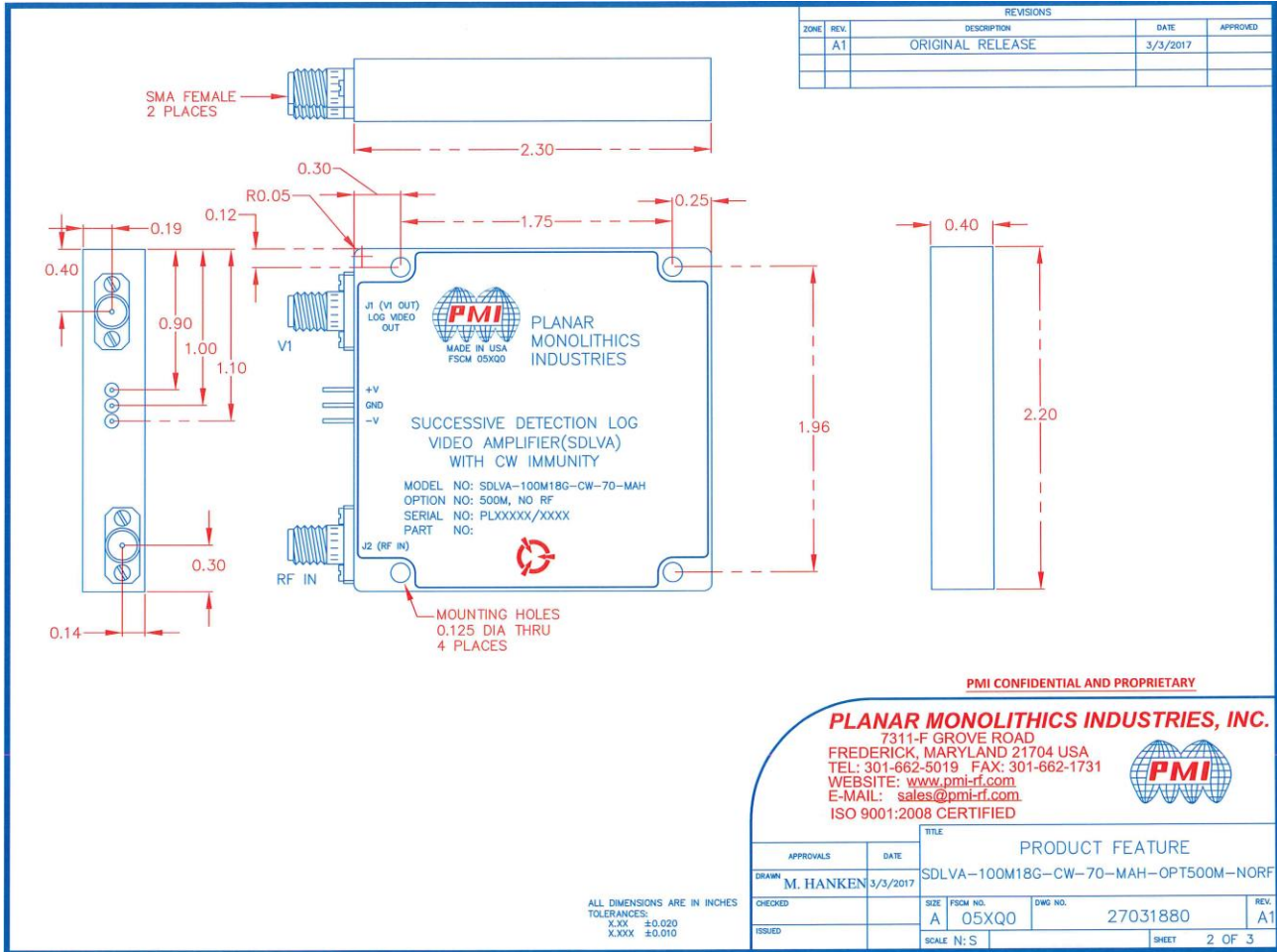
7311-F Grove Road Frederick, MD 21704 USA Phone: (301)662-5019 Fax: (301)662-1731
 Email: sales@pmi-rf.com



Typical Characteristics for SDLVA-100M18G-CW-70-MAH-OPT500M-NORF

Product Feature

(Dimensional Specifications)



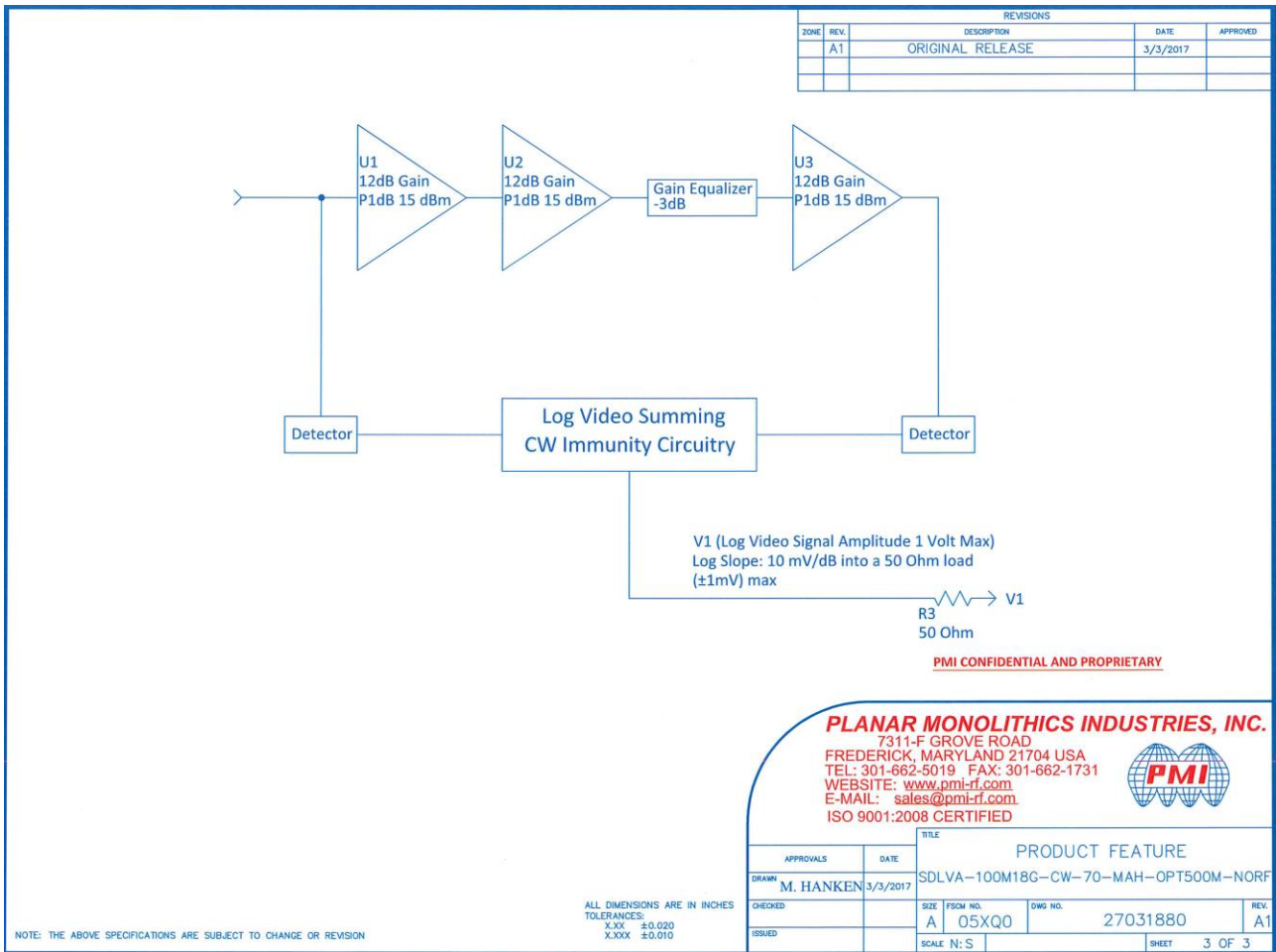
7311-F Grove Road Frederick, MD 21704 USA Phone: (301)662-5019 Fax: (301)662-1731
 Email: sales@pmi-rf.com



Typical Characteristics for SDLVA-100M18G-CW-70-MAH-OPT500M-NORF

Product Feature

(Functional Block Diagram)



7311-F Grove Road Frederick, MD 21704 USA Phone: (301)662-5019 Fax: (301)662-1731
 Email: sales@pmi-rf.com



Typical Characteristics for **SDLVA-100M18G-CW-70-MAH-OPT500M-NORF**

Summary Test Data (Part 1)

TEST ITEM NO:	PARAMETERS	SPECIFIED VALUE	MEASURED VALUE	REMARKS QA/QC
1	Frequency Range	100 MHz-18GHz	100MHz-18GHz	
2	Frequency Flatness	±2.0 dB Max.	±1.7 dB	
3	TSS	-68 dBm Min., -70 dBm Typ.	-68dBm	
4	V SWR	2.0:1 Max.	1.5:1	
6	V1 (Log Video Signal Amplitude)	1 Volt Max.	.843V	
7	Log Slope	10mV/dB into a 50Ω load (±1mV) Max.	10.1mV/dB	
8	Log Range	-65 to +5 dBm Min.	-65 to +5 dBm	
9	Log Linearity	±1.75dB (-40°C to +85°C) Max.	±1.5 dB	
10	Pulse Range	100ns to 250μs	100ns to 250μs	
11	Rise Time	35ns Max.	27ns	
12	Settling time to ±1dB	50ns Typ.	< 50ns	
13	Recovery Time	350ns Max.	275ns	
14	CW Immunity Range	TSS to -45 dBm (1dB degradation)	< 1 dB	
15	Pulse Considered CW	1ms Typ.	1ms	



**Typical Characteristics
for
SDLVA-100M18G-CW-70-MAH-OPT500M-NORF**

Summary Test Data (Part 2)

TEST ITEM NO:	PARAMETERS	SPECIFIED VALUE	MEASURED VALUE	REMARKS QA/QC
16	Rejection Time	1ms Typ.	1ms	
17	Droop	1dB Max.	0.8dB	
18	Power Supply	±12VDC to ±15VDC	+12V@120mA -12V@66mA	



Typical Characteristics for SDLVA-100M18G-CW-70-MAH-OPT500M-NORF

Tabulated Data @ 25°C

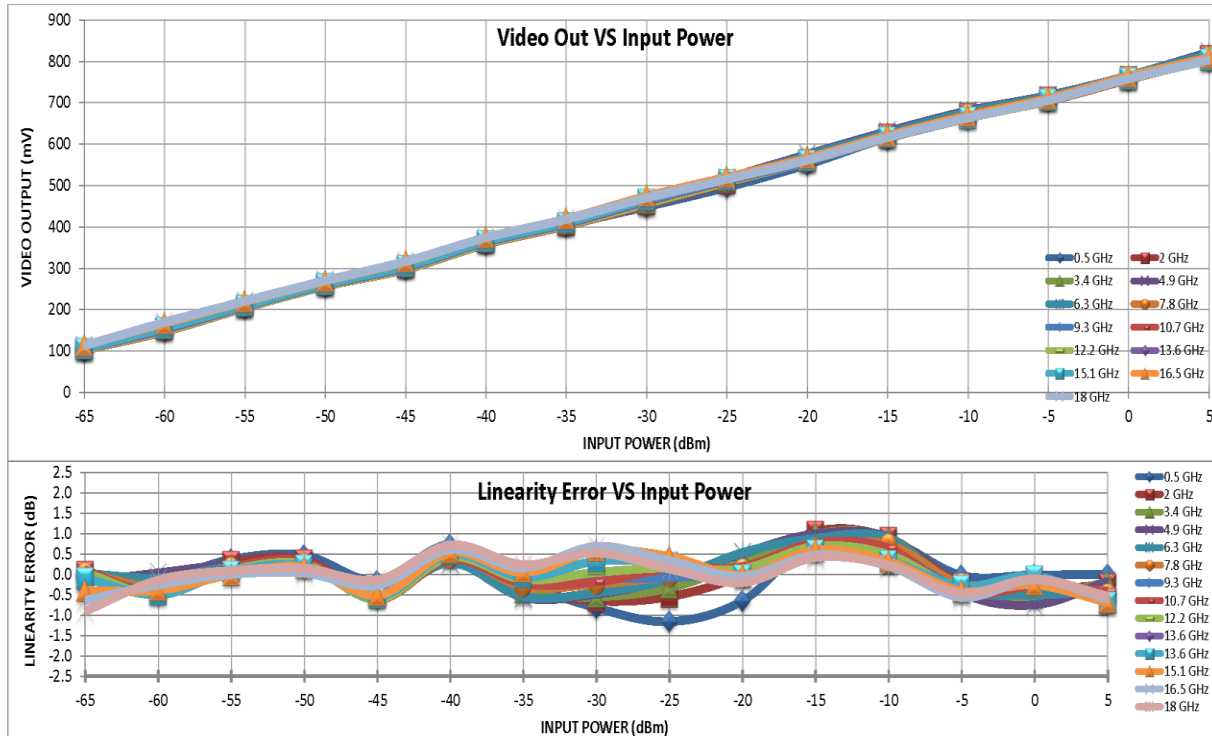
Frequency			-65	-60	-55	-50	-45	-40	-35	-30	-25	-20	-15	-10	-5	0	5	RF Input Power (dBm)
0.5 GHz	INTERCEPT (mV)	757																Measured Value (mV)
	SLOPE (mV/dB)	10	107	156	211	262	306	365	405	449	496	551	616	666	707	757	807	Error (mV)
			-0.07	-0.14	0.37	0.47	-0.16	0.73	-0.19	-0.82	-1.16	-0.65	0.85	0.83	-0.03	-0.02	0.00	LINEARITY ERROR (dB)
2 GHz	INTERCEPT (mV)	766																Measured Value (mV)
	SLOPE (mV/dB)	10.2	106	153	210	261	304	364	406	454	506	562	624	673	712	762	814	Error (mV)
			1	-3	3	4	-5	5	-4	-7	-6	0	11	9	-2	-4	-2	LINEARITY ERROR (dB)
			0.06	-0.26	0.30	0.35	-0.46	0.48	-0.36	-0.65	-0.55	-0.01	1.05	0.90	-0.23	-0.38	-0.25	
3.4 GHz	INTERCEPT (mV)	767																Measured Value (mV)
	SLOPE (mV/dB)	10.1	109	160	213	264	308	368	409	459	511	568	626	675	713	762	816	Error (mV)
			-1	-1	2	2	-4	5	-5	-6	-3	3	10	9	-4	-6	-2	LINEARITY ERROR (dB)
			-0.08	-0.12	0.21	0.22	-0.39	0.49	-0.45	-0.55	-0.33	0.29	0.99	0.89	-0.42	-0.57	-0.18	
4.9 GHz	INTERCEPT (mV)	773																Measured Value (mV)
	SLOPE (mV/dB)	10.2	111	164	217	267	312	370	412	463	518	575	631	681	718	765	822	Error (mV)
			-2	0	2	2	-4	3	-6	-5	-1	5	10	9	-5	-8	-2	LINEARITY ERROR (dB)
			-0.19	0.03	0.23	0.17	-0.41	0.30	-0.57	-0.48	-0.12	0.51	0.99	0.90	-0.45	-0.75	-0.18	
6.3 GHz	INTERCEPT (mV)	771																Measured Value (mV)
	SLOPE (mV/dB)	10.2	109	158	212	263	306	366	408	460	515	572	627	678	716	765	818	Error (mV)
			0	-1	2	2	-6	3	-6	-5	-1	5	9	9	-4	-5	-4	LINEARITY ERROR (dB)
			0.02	-0.09	0.18	0.21	-0.55	0.28	-0.54	-0.45	-0.13	0.53	0.88	0.89	-0.36	-0.50	-0.38	
7.8 GHz	INTERCEPT (mV)	764																Measured Value (mV)
	SLOPE (mV/dB)	10.1	106	153	209	260	303	363	407	458	510	563	619	670	711	762	810	Error (mV)
			0	-3	2	3	-5	4	-3	-2	-1	1	7	7	-2	-2	-5	LINEARITY ERROR (dB)
			0.04	-0.30	0.17	0.26	-0.54	0.41	-0.30	-0.24	-0.06	0.12	0.64	0.73	-0.24	-0.20	-0.49	
9.3 GHz	INTERCEPT (mV)	763																Measured Value (mV)
	SLOPE (mV/dB)	10.1	106	153	209	261	303	364	407	459	510	562	619	668	709	761	809	Error (mV)
			0	-4	2	3	-5	5	-2	-1	-1	1	8	6	-3	-2	-5	LINEARITY ERROR (dB)
			-0.05	-0.38	0.16	0.30	-0.49	0.48	-0.23	-0.12	-0.07	0.06	0.74	0.59	-0.35	-0.18	-0.45	
10.7 GHz	INTERCEPT (mV)	759																Measured Value (mV)
	SLOPE (mV/dB)	10.1	103	147	204	257	298	358	403	454	508	559	615	665	704	756	806	Error (mV)
			1	-5	2	3	-6	4	-2	-2	1	2	8	7	-5	-3	-4	LINEARITY ERROR (dB)
			0.10	-0.49	0.16	0.31	-0.62	0.37	-0.23	-0.18	0.14	0.19	0.77	0.64	-0.47	-0.28	-0.41	
12.2 GHz	INTERCEPT (mV)	759																Measured Value (mV)
	SLOPE (mV/dB)	10.1	104	149	205	257	299	360	405	457	508	559	614	663	705	758	803	Error (mV)
			0	-5	1	2	-6	4	-1	0	2	1	7	5	-4	-1	-6	LINEARITY ERROR (dB)
			0.04	-0.51	0.10	0.25	-0.62	0.42	-0.13	0.05	0.16	0.14	0.69	0.48	-0.35	-0.09	-0.64	
13.6 GHz	INTERCEPT (mV)	760																Measured Value (mV)
	SLOPE (mV/dB)	10.1	106	152	208	260	302	363	408	462	512	559	615	663	707	760	804	Error (mV)
			-1	-5	1	2	-6	5	-1	3	3	0	6	3	-3	0	-7	LINEARITY ERROR (dB)
			-0.11	-0.50	0.07	0.20	-0.56	0.50	-0.07	0.32	0.28	-0.02	0.58	0.33	-0.29	-0.04	-0.70	
15.1 GHz	INTERCEPT (mV)	761																Measured Value (mV)
	SLOPE (mV/dB)	10	106	156	210	262	305	366	411	466	515	561	617	664	707	758	804	Error (mV)
			-4	-4	0	2	-5	5	0	6	4	0	6	3	-4	-3	-7	LINEARITY ERROR (dB)
			-0.40	-0.39	-0.01	0.17	-0.52	0.54	0.05	0.58	0.44	-0.02	0.60	0.31	-0.41	-0.26	-0.69	
16.5 GHz	INTERCEPT (mV)	765																Measured Value (mV)
	SLOPE (mV/dB)	9.92	114	167	220	269	316	374	419	474	520	566	621	668	710	764	809	Error (mV)
			-6	-3	0	0	-3	6	2	7	3	-1	5	2	-6	-1	-6	LINEARITY ERROR (dB)
			-0.64	-0.26	0.00	0.03	-0.27	0.61	0.16	0.69	0.33	-0.05	0.47	0.20	-0.56	-0.13	-0.60	
18 GHz	INTERCEPT (mV)	760																Measured Value (mV)
	SLOPE (mV/dB)	9.81	113	170	221	271	317	374	419	470	516	561	617	664	706	758	803	Error (mV)
			-9	-4	1	1	-1	7	2	5	1	-2	4	2	-5	-1	-6	LINEARITY ERROR (dB)
			-0.90	-0.14	0.09	0.14	-0.13	0.72	0.24	0.53	0.13	-0.20	0.41	0.23	-0.46	-0.11	-0.54	
Average Slope (mV)		10.1																
Flatness			0.6	1.1	0.8	0.7	1	0.8	0.8	1.2	1.2	1.2	0.8	0.9	0.7	0.4	1	

7311-F Grove Road Frederick, MD 21704 USA Phone: (301)662-5019 Fax: (301)662-1731
Email: sales@pmi-rf.com



Typical Characteristics for SDLVA-100M18G-CW-70-MAH-OPT500M-NORF

Video Output and Linearity Error VS Input Power @ 25°C

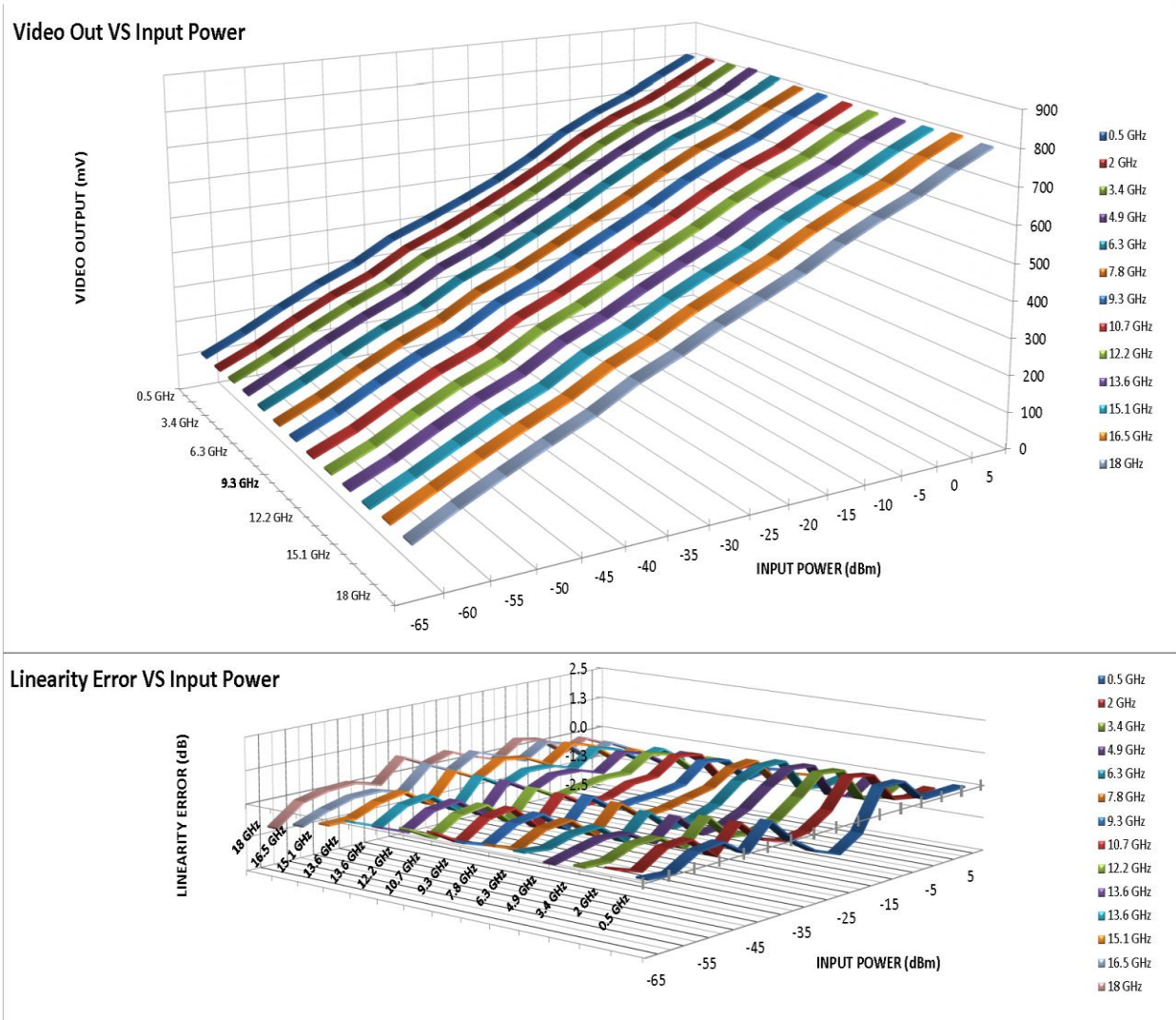


7311-F Grove Road Frederick, MD 21704 USA Phone: (301)662-5019 Fax: (301)662-1731
Email: sales@pmi-rf.com



Typical Characteristics for SDLVA-100M18G-CW-70-MAH-OPT500M-NORF

Video Output and Linearity Error VS Input Power @ 25°C (3D- Plot)



7311-F Grove Road Frederick, MD 21704 USA Phone: (301)662-5019 Fax: (301)662-1731
Email: sales@pmi-rf.com



Typical Characteristics for SDLVA-100M18G-CW-70-MAH-OPT500M-NORF

Tabulated Data @ -40°C

Frequency

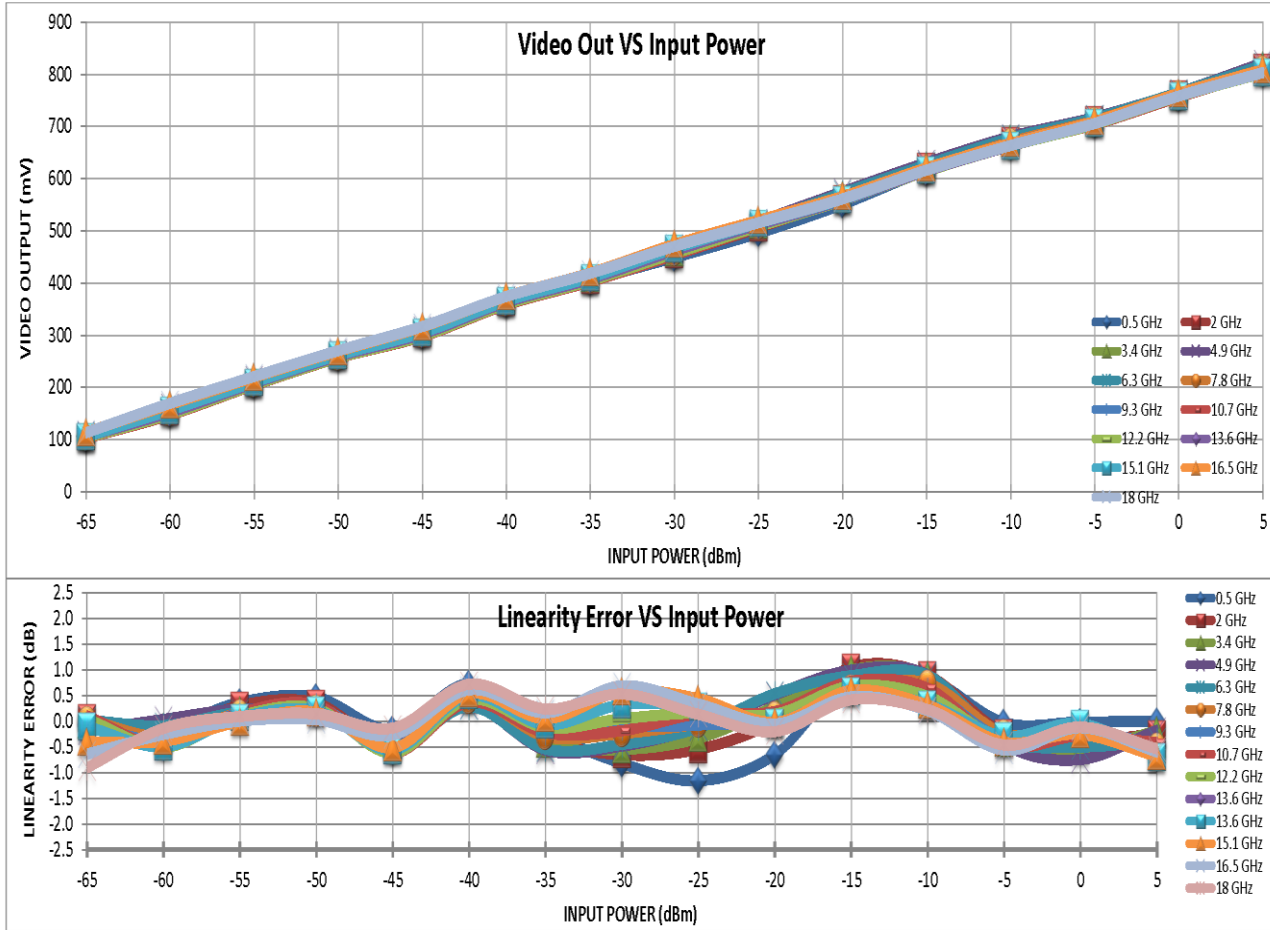
		-65	-60	-55	-50	-45	-40	-35	-30	-25	-20	-15	-10	-5	0	5	RF Input Power (dBm)	
0.5 GHz	INTERCEPT (mV)	719																Measured Value (mV)
	SLOPE (mV/dB)	9.63	99	140	194	241	281	337	378	421	468	527	586	630	671	718	768	Error (mV)
			5	-2	4	3	-5	3	-5	-10	-11	0	11	7	-1	-1	0	LINEARITY ERROR (dB)
			0.56	-0.17	0.40	0.34	-0.55	0.30	-0.52	-1.01	-1.17	0.04	1.19	0.73	-0.06	-0.13	0.05	
2 GHz	INTERCEPT (mV)	728																Measured Value (mV)
	SLOPE (mV/dB)	9.74	100	143	196	243	283	340	381	428	477	537	595	638	677	724	777	Error (mV)
			5	-1	3	2	-7	1	-7	-8	-7	4	13	8	-3	-4	0	LINEARITY ERROR (dB)
			0.52	-0.11	0.33	0.24	-0.69	0.14	-0.67	-0.79	-0.74	0.36	1.32	0.78	-0.28	-0.40	-0.02	
3.4 GHz	INTERCEPT (mV)	730																Measured Value (mV)
	SLOPE (mV/dB)	9.69	103	150	200	248	288	344	384	433	484	542	598	642	679	724	777	Error (mV)
			3	1	2	2	-7	1	-7	-6	-5	5	13	9	-3	-6	-2	LINEARITY ERROR (dB)
			0.27	0.06	0.23	0.19	-0.69	0.15	-0.73	-0.65	-0.47	0.51	1.32	0.89	-0.26	-0.66	-0.16	
4.9 GHz	INTERCEPT (mV)	736																Measured Value (mV)
	SLOPE (mV/dB)	9.76	104	151	201	249	289	345	386	436	488	546	601	648	686	727	781	Error (mV)
			3	1	2	1	-7	0	-8	-6	-3	6	13	10	0	-8	-3	LINEARITY ERROR (dB)
			0.33	0.11	0.22	0.15	-0.76	0.00	-0.81	-0.65	-0.33	0.58	1.29	1.07	-0.05	-0.87	-0.28	
6.3 GHz	INTERCEPT (mV)	733																Measured Value (mV)
	SLOPE (mV/dB)	9.74	103	149	199	248	287	344	385	437	486	542	598	647	684	727	777	Error (mV)
			3	0	2	2	-8	0	-7	-4	-4	4	11	11	0	-6	-4	LINEARITY ERROR (dB)
			0.33	0.03	0.20	0.17	-0.79	0.04	-0.71	-0.42	-0.36	0.41	1.09	1.12	0.01	-0.66	-0.45	
7.8 GHz	INTERCEPT (mV)	728																Measured Value (mV)
	SLOPE (mV/dB)	9.72	101	144	196	244	283	341	382	434	483	535	591	640	680	726	772	Error (mV)
			6	-1	2	1	-8	1	-6	-3	-3	1	9	8	1	-2	-5	LINEARITY ERROR (dB)
			0.47	-0.15	0.22	0.14	-0.81	0.10	-0.68	-0.28	-0.27	0.13	0.89	0.87	0.07	-0.25	-0.54	
9.3 GHz	INTERCEPT (mV)	727																Measured Value (mV)
	SLOPE (mV/dB)	9.72	100	142	194	242	282	339	381	433	482	535	589	639	679	725	770	Error (mV)
			5	-2	2	1	-8	1	-6	-3	-2	2	7	9	0	-2	-5	LINEARITY ERROR (dB)
			0.52	-0.16	0.17	0.12	-0.83	0.11	-0.57	-0.26	-0.26	0.23	0.75	0.91	-0.01	-0.18	-0.54	
10.7 GHz	INTERCEPT (mV)	722																Measured Value (mV)
	SLOPE (mV/dB)	9.72	99	135	189	236	276	332	376	426	477	530	586	634	672	720	766	Error (mV)
			9	-3	2	1	-9	-1	-6	-4	-2	3	10	9	-1	-2	-5	LINEARITY ERROR (dB)
			0.89	-0.33	0.19	0.07	-0.88	-0.13	-0.60	-0.41	-0.23	0.29	0.98	0.96	-0.14	-0.17	-0.49	
12.2 GHz	INTERCEPT (mV)	720																Measured Value (mV)
	SLOPE (mV/dB)	9.69	98	135	188	236	276	332	376	428	476	528	584	630	670	721	763	Error (mV)
			8	-3	1	0	-8	0	-5	-2	-2	2	9	7	-2	1	-6	LINEARITY ERROR (dB)
			0.79	-0.36	0.11	0.06	-0.83	-0.03	-0.49	-0.19	-0.17	0.21	0.93	0.71	-0.20	0.12	-0.64	
13.6 GHz	INTERCEPT (mV)	723																Measured Value (mV)
	SLOPE (mV/dB)	9.7	99	137	191	238	278	335	379	431	479	529	584	631	675	725	765	Error (mV)
			7	-3	2	1	-8	1	-4	0	-1	0	7	5	0	2	-7	LINEARITY ERROR (dB)
			0.67	-0.33	0.17	0.06	-0.85	0.07	-0.45	-0.05	-0.15	0.02	0.76	0.51	0.04	0.21	-0.67	
15.1 GHz	INTERCEPT (mV)	724																Measured Value (mV)
	SLOPE (mV/dB)	9.68	100	140	192	241	280	338	382	435	482	531	587	633	676	725	765	Error (mV)
			5	-3	1	1	-9	1	-4	1	0	0	8	6	0	1	-8	LINEARITY ERROR (dB)
			0.53	-0.32	0.10	0.06	-0.90	0.08	-0.37	0.14	-0.05	0.04	0.88	0.57	-0.01	0.08	-0.83	
16.5 GHz	INTERCEPT (mV)	728																Measured Value (mV)
	SLOPE (mV/dB)	9.62	103	150	200	248	288	345	388	442	486	536	591	636	679	729	770	Error (mV)
			1	-1	1	1	-7	2	-3	2	-1	0	7	4	-1	1	-6	LINEARITY ERROR (dB)
			0.07	-0.08	0.10	0.13	-0.75	0.25	-0.30	0.25	-0.12	0.03	0.73	0.43	-0.15	0.09	-0.67	
18 GHz	INTERCEPT (mV)	725																Measured Value (mV)
	SLOPE (mV/dB)	9.58	104	150	200	248	287	345	387	438	482	531	587	633	675	727	770	Error (mV)
			2	0	2	2	-6	3	-3	0	-3	-3	6	3	-2	2	-2	LINEARITY ERROR (dB)
			0.16	-0.03	0.20	0.22	-0.67	0.30	-0.32	0.03	-0.34	-0.29	0.58	0.36	-0.20	0.25	-0.25	
Average Slope (mV)		9.7																
Flatness			0.3	0.8	0.6	0.6	0.7	0.7	0.6	1.1	1	0.9	0.9	0.9	0.8	0.5	1	

7311-F Grove Road Frederick, MD 21704 USA Phone: (301)662-5019 Fax: (301)662-1731
Email: sales@pmi-rf.com



Typical Characteristics for SDLVA-100M18G-CW-70-MAH-OPT500M-NORF

Video Output and Linearity Error VS Input Power @ -40°C

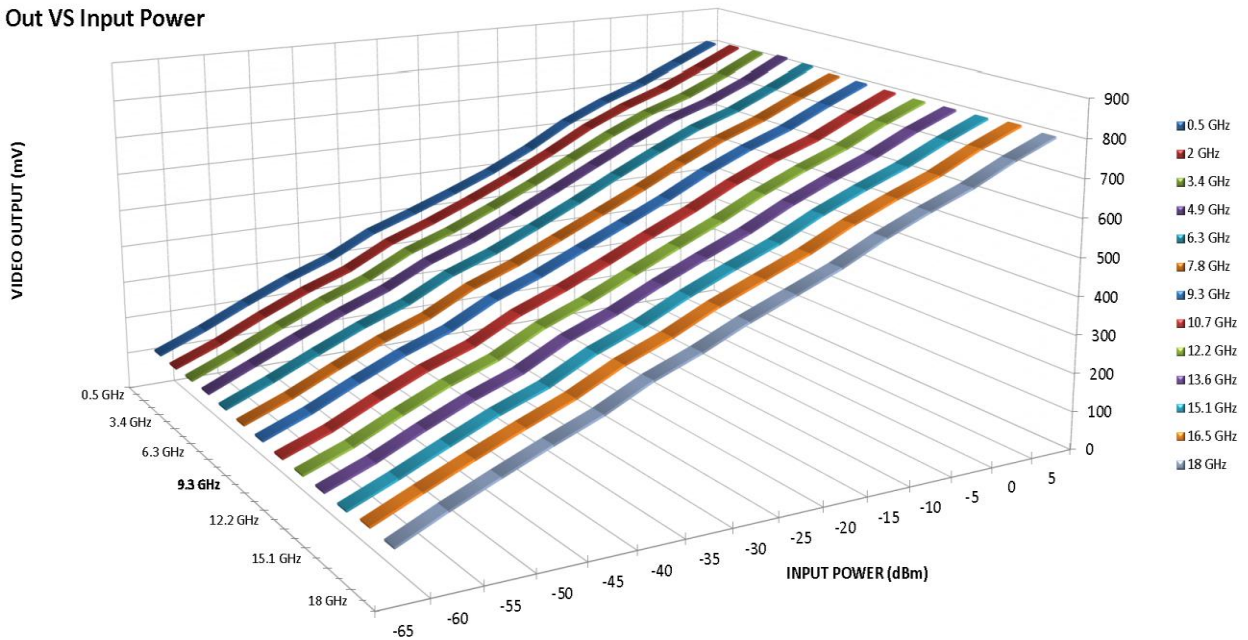




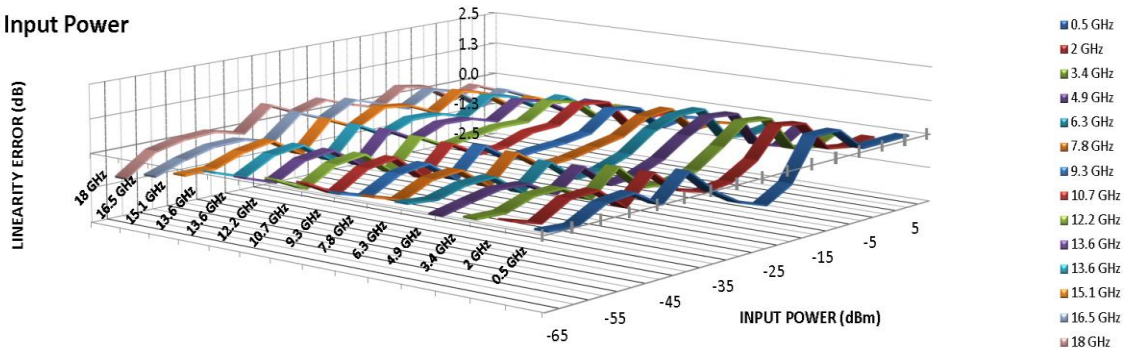
Typical Characteristics for SDLVA-100M18G-CW-70-MAH-OPT500M-NORF

Video Output and Linearity Error VS Input Power @ -40°C (3D- Plot)

Video Out VS Input Power



Linearity Error VS Input Power



7311-F Grove Road Frederick, MD 21704 USA Phone: (301)662-5019 Fax: (301)662-1731
Email: sales@pmi-rf.com



Typical Characteristics for SDLVA-100M18G-CW-70-MAH-OPT500M-NORF

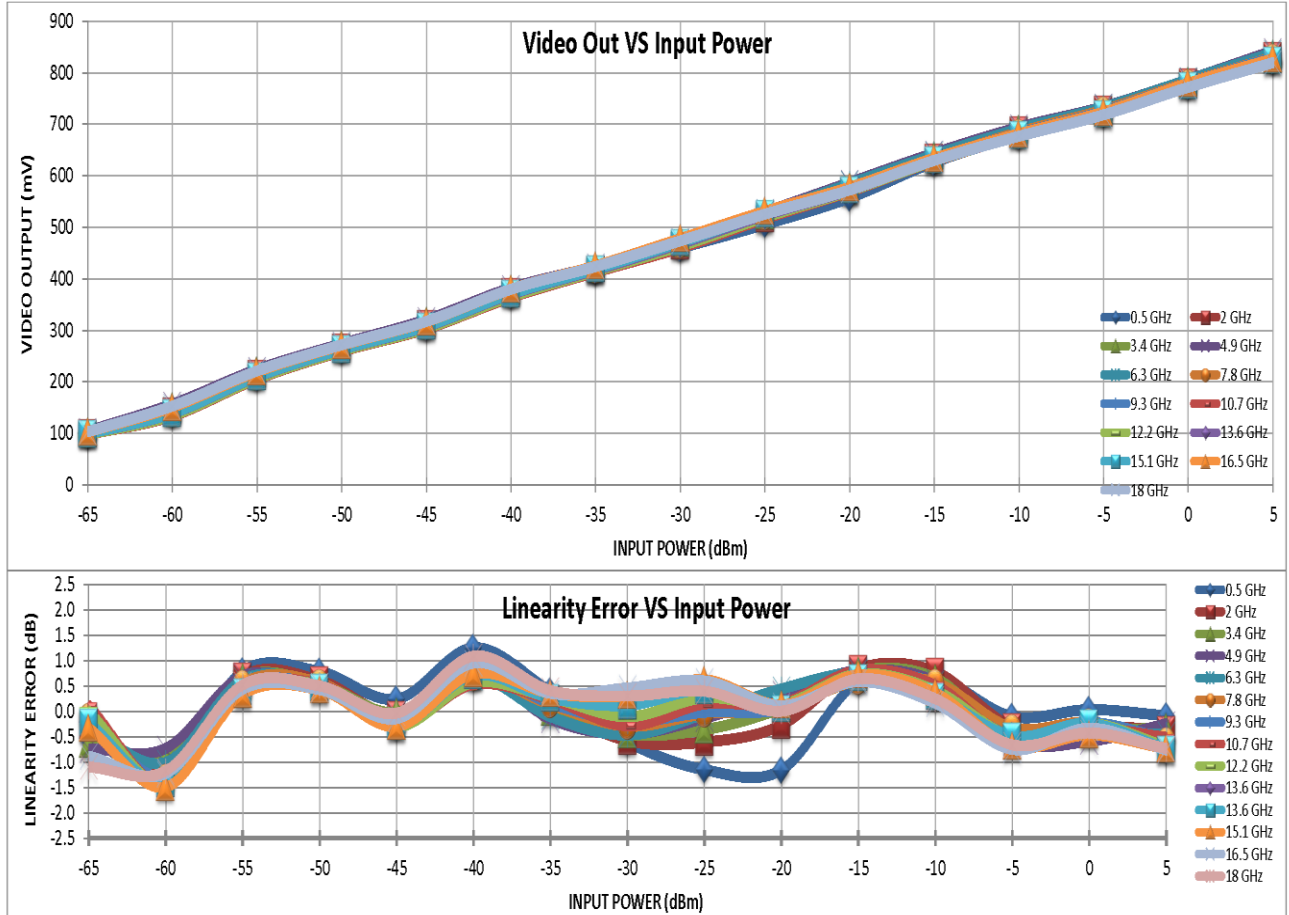
Tabulated Data @ +85°C

Frequency			-65	-60	-55	-50	-45	-40	-35	-30	-25	-20	-15	-10	-5	0	5	RF Input Power (dBm)
0.5 GHz	INTERCEPT (mV)	774	101	146	219	269	315	376	419	460	506	557	626	679	722	775	825	Measured Value (mV)
	SLOPE (mV/dB)	10.3	-5	-12	8	8	2	13	4	-6	-12	-12	6	7	-1	0	-1	Error (mV)
			-0.53	-1.16	0.79	0.79	0.24	1.26	0.40	-0.60	-1.15	-1.16	0.60	0.67	-0.10	0.04	-0.09	LINEARITY ERROR (dB)
2 GHz	INTERCEPT (mV)	786	101	144	216	267	313	375	419	465	517	573	637	689	730	782	834	Measured Value (mV)
	SLOPE (mV/dB)	10.5	-3	-12	7	6	-1	9	1	-6	-6	-3	9	8	-3	-3	-4	Error (mV)
			-0.28	-1.14	0.69	0.61	-0.05	0.86	0.09	-0.58	-0.61	-0.27	0.84	0.78	-0.30	-0.30	-0.35	LINEARITY ERROR (dB)
3.4 GHz	INTERCEPT (mV)	787	103	153	221	272	318	380	422	470	523	579	639	690	730	783	836	Measured Value (mV)
	SLOPE (mV/dB)	10.4	-7	-9	7	6	0	10	0	-5	-4	1	8	7	-6	-4	-3	Error (mV)
			-0.66	-0.90	0.67	0.64	-0.02	0.94	-0.01	-0.45	-0.36	0.06	0.79	0.66	-0.54	-0.42	-0.31	LINEARITY ERROR (dB)
4.9 GHz	INTERCEPT (mV)	793	104	157	224	274	321	382	425	474	530	587	644	694	734	787	843	Measured Value (mV)
	SLOPE (mV/dB)	10.5	-8	-8	7	5	-1	8	-2	-5	-1	4	8	6	-6	-6	-3	Error (mV)
			-0.74	-0.73	0.70	0.46	-0.06	0.81	-0.16	-0.45	-0.14	0.35	0.80	0.59	-0.60	-0.59	-0.25	LINEARITY ERROR (dB)
6.3 GHz	INTERCEPT (mV)	791	101	147	217	269	313	376	420	469	526	584	641	691	733	786	839	Measured Value (mV)
	SLOPE (mV/dB)	10.6	-4	-11	7	5	-3	7	-1	-5	-1	5	8	6	-5	-4	-5	Error (mV)
			-0.34	-1.01	0.62	0.51	-0.24	0.67	-0.10	-0.47	-0.05	0.44	0.77	0.55	-0.48	-0.42	-0.45	LINEARITY ERROR (dB)
7.8 GHz	INTERCEPT (mV)	784	100	140	212	264	308	371	417	466	521	574	633	685	728	781	830	Measured Value (mV)
	SLOPE (mV/dB)	10.5	-1	-14	6	6	-3	7	1	-3	-1	1	6	6	-3	-2	-6	Error (mV)
			-0.11	-1.31	0.54	0.57	-0.24	0.66	0.13	-0.29	-0.05	0.06	0.60	0.57	-0.32	-0.22	-0.59	LINEARITY ERROR (dB)
9.3 GHz	INTERCEPT (mV)	783	100	141	212	264	309	372	418	466	521	574	634	682	725	780	829	Measured Value (mV)
	SLOPE (mV/dB)	10.5	-2	-13	5	5	-2	8	2	-2	0	0	8	4	-5	-2	-6	Error (mV)
			-0.18	-1.28	0.48	0.52	-0.22	0.76	0.16	-0.19	-0.02	0.05	0.78	0.40	-0.48	-0.22	-0.54	LINEARITY ERROR (dB)
10.7 GHz	INTERCEPT (mV)	777	98	134	205	259	303	364	413	460	517	569	628	678	719	774	824	Measured Value (mV)
	SLOPE (mV/dB)	10.5	1	-15	4	6	-3	6	2	-3	2	2	8	5	-6	-3	-5	Error (mV)
			0.12	-1.46	0.39	0.54	-0.29	0.53	0.24	-0.28	0.15	0.16	0.81	0.51	-0.56	-0.33	-0.51	LINEARITY ERROR (dB)
12.2 GHz	INTERCEPT (mV)	778	98	135	206	260	304	366	415	463	519	570	629	678	721	776	823	Measured Value (mV)
	SLOPE (mV/dB)	10.5	0	-15	4	5	-3	6	3	-1	3	1	8	4	-5	-2	-7	Error (mV)
			0.01	-1.46	0.37	0.52	-0.31	0.57	0.27	-0.11	0.27	0.14	0.74	0.41	-0.49	-0.23	-0.69	LINEARITY ERROR (dB)
13.6 GHz	INTERCEPT (mV)	780	99	139	210	263	307	370	417	468	524	572	631	679	723	778	825	Measured Value (mV)
	SLOPE (mV/dB)	10.4	-2	-15	4	5	-3	7	3	1	4	1	7	3	-5	-3	-8	Error (mV)
			-0.22	-1.42	0.39	0.47	-0.29	0.71	0.26	0.12	0.42	0.05	0.67	0.30	-0.49	-0.24	-0.75	LINEARITY ERROR (dB)
15.1 GHz	INTERCEPT (mV)	780	99	139	211	264	308	371	419	471	526	573	631	680	721	775	825	Measured Value (mV)
	SLOPE (mV/dB)	10.4	-3	-16	3	4	-3	8	4	3	6	1	8	4	-7	-5	-8	Error (mV)
			-0.32	-1.49	0.33	0.42	-0.30	0.74	0.36	0.31	0.52	0.13	0.72	0.36	-0.69	-0.46	-0.74	LINEARITY ERROR (dB)
16.6 GHz	INTERCEPT (mV)	783	103	151	220	271	317	380	425	478	531	578	634	682	724	780	827	Measured Value (mV)
	SLOPE (mV/dB)	10.3	-9	-13	4	4	-1	10	4	5	5	1	6	2	-8	-3	-9	Error (mV)
			-0.88	-1.23	0.43	0.43	-0.14	0.95	0.36	0.46	0.60	0.11	0.59	0.16	-0.75	-0.33	-0.76	LINEARITY ERROR (dB)
18 GHz	INTERCEPT (mV)	776	103	153	221	272	317	380	424	474	526	573	630	677	719	772	820	Measured Value (mV)
	SLOPE (mV/dB)	10.2	-11	-12	5	5	0	11	4	3	4	0	7	3	-7	-4	-7	Error (mV)
			-1.10	-1.17	0.52	0.50	-0.03	1.09	0.41	0.30	0.40	0.00	0.64	0.25	-0.66	-0.42	-0.73	LINEARITY ERROR (dB)
	Average Slope (mV)	10.4	0.3	1.1	0.9	0.7	0.9	0.9	0.6	0.9	1.2	1.4	0.8	0.8	0.8	0.7	1.1	Flatness



Typical Characteristics for SDLVA-100M18G-CW-70-MAH-OPT500M-NORF

Video Output and Linearity Error VS Input Power @ 85°C



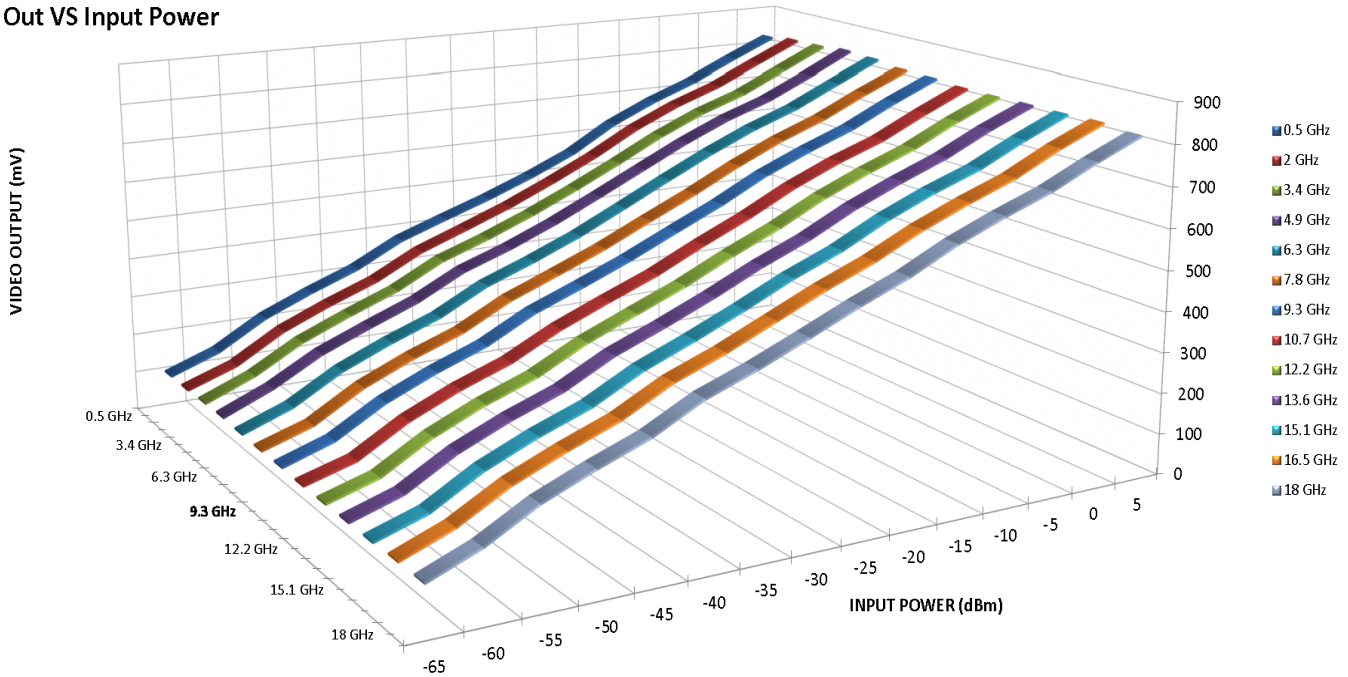
7311-F Grove Road Frederick, MD 21704 USA Phone: (301)662-5019 Fax: (301)662-1731
Email: sales@pmi-rf.com



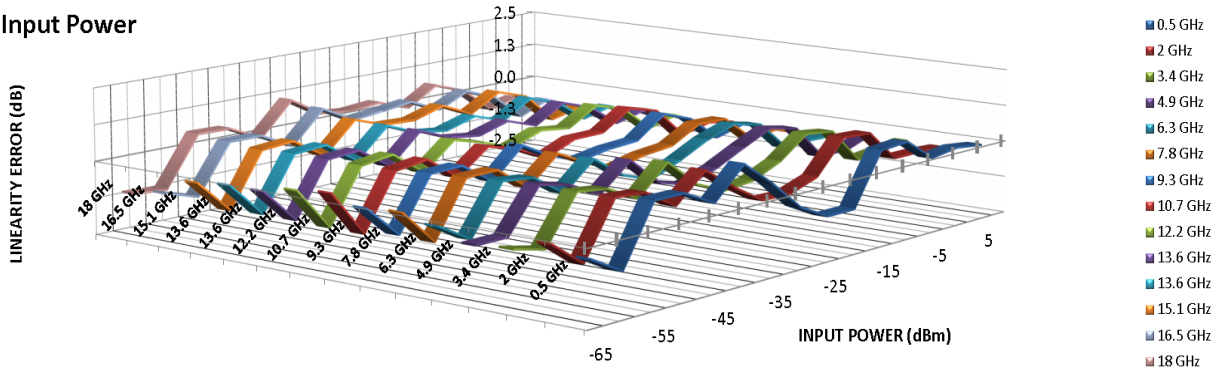
Typical Characteristics for SDLVA-100M18G-CW-70-MAH-OPT500M-NORF

Video Output and Linearity Error VS Input Power @ 85°C (3D Plot)

Video Out VS Input Power



Linearity Error VS Input Power

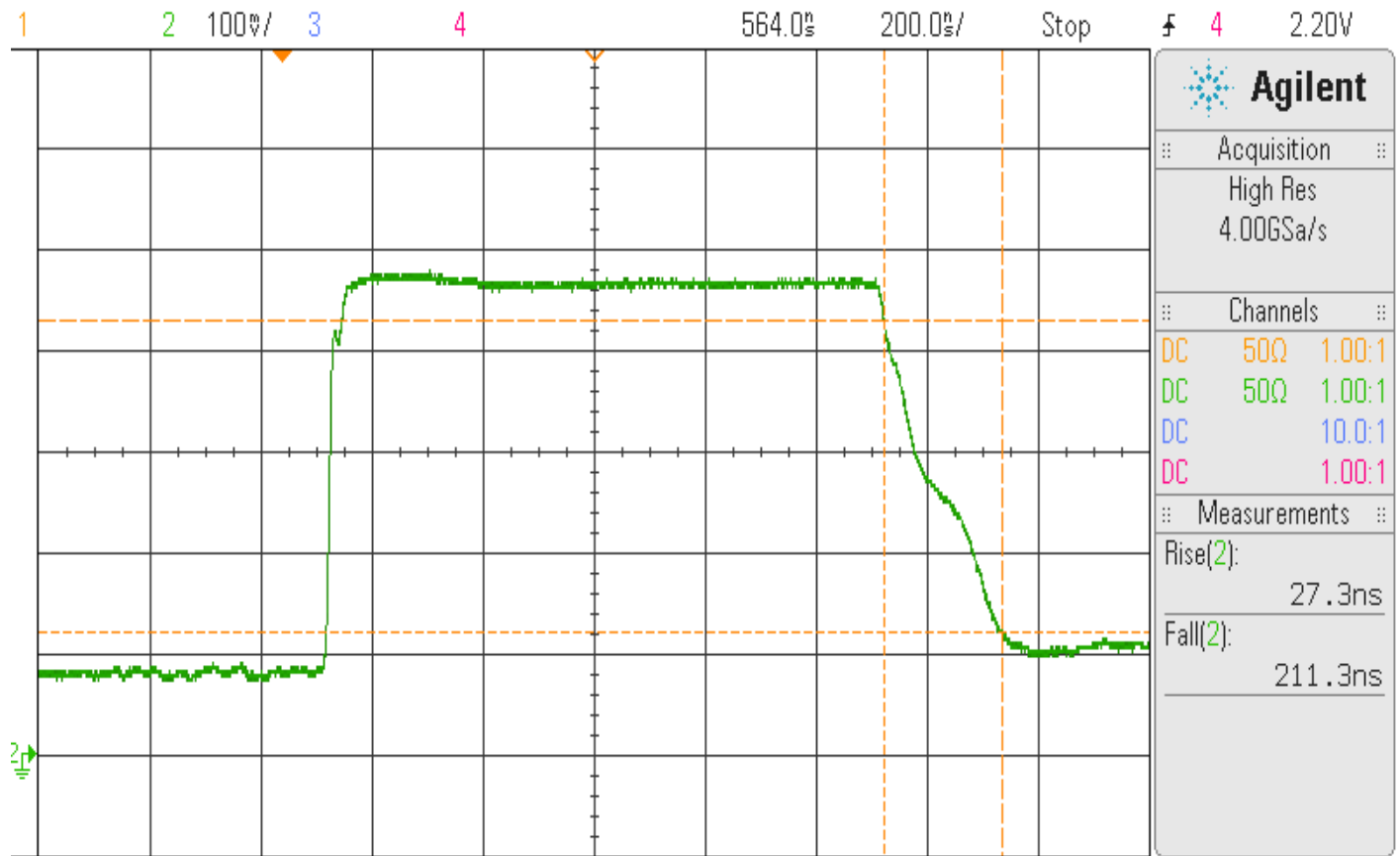


7311-F Grove Road Frederick, MD 21704 USA Phone: (301)662-5019 Fax: (301)662-1731
Email: sales@pmi-rf.com



Typical Characteristics for SDLVA-100M18G-CW-70-MAH-OPT500M-NORF

Rise Time and Recovery Time

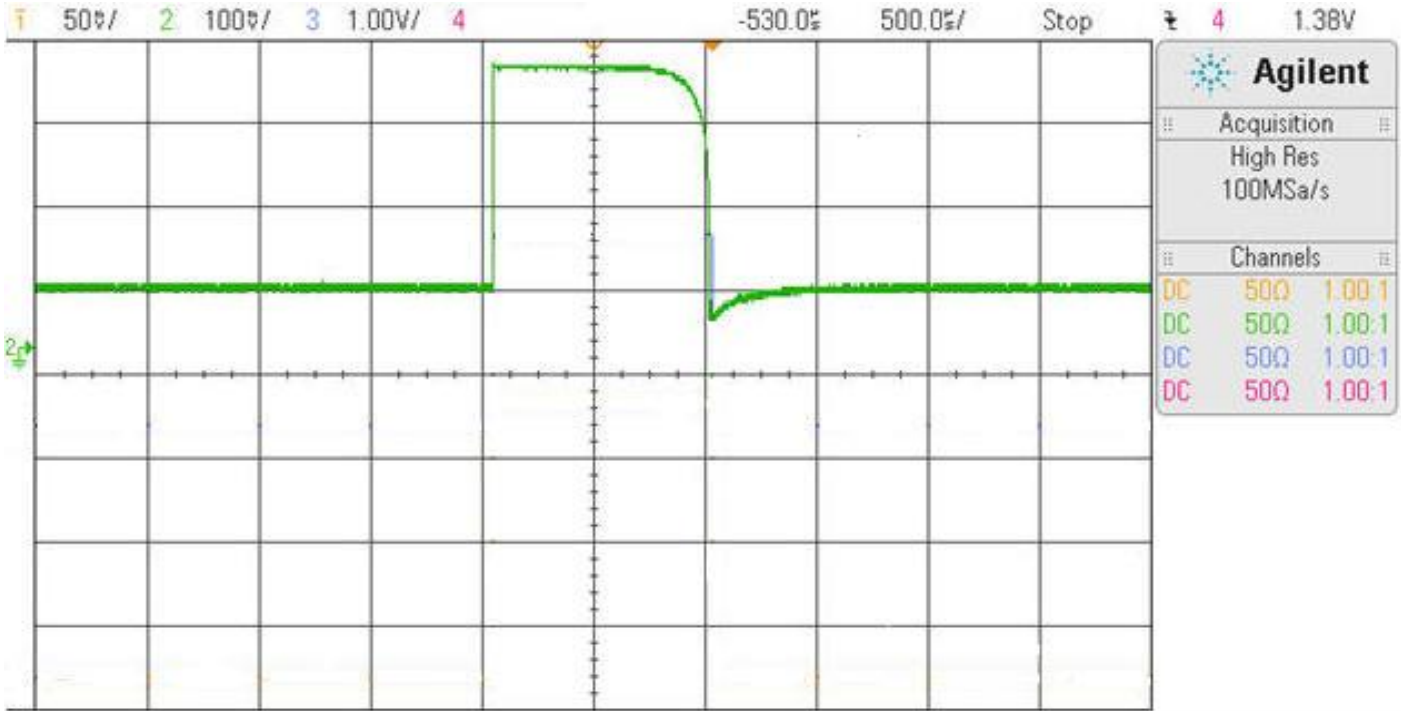


Green Trace : Video Signal (V1)



Typical Characteristics for SDLVA-100M18G-CW-70-MAH-OPT500M-NORF

Pulse Considered CW, CW Rejection Time and Droop

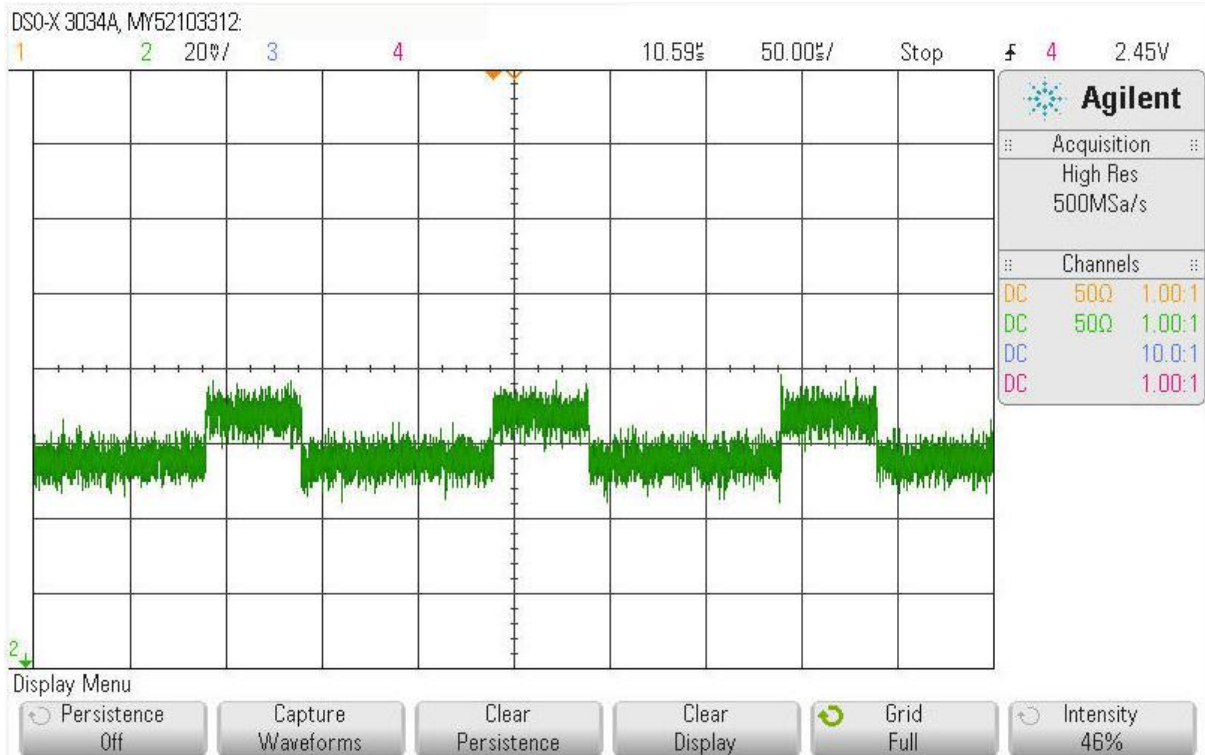


Green Trace : Video Signal (V1)



Typical Characteristics for SDLVA-100M18G-CW-70-MAH-OPT500M-NORF

Tangential Signal Sensitivity (TSS) @ -68 dBm



Green Trace: Video Signal (V1)



Typical Characteristics for SDLVA-100M18G-CW-70-MAH-OPT500M-NORF

VSWR

