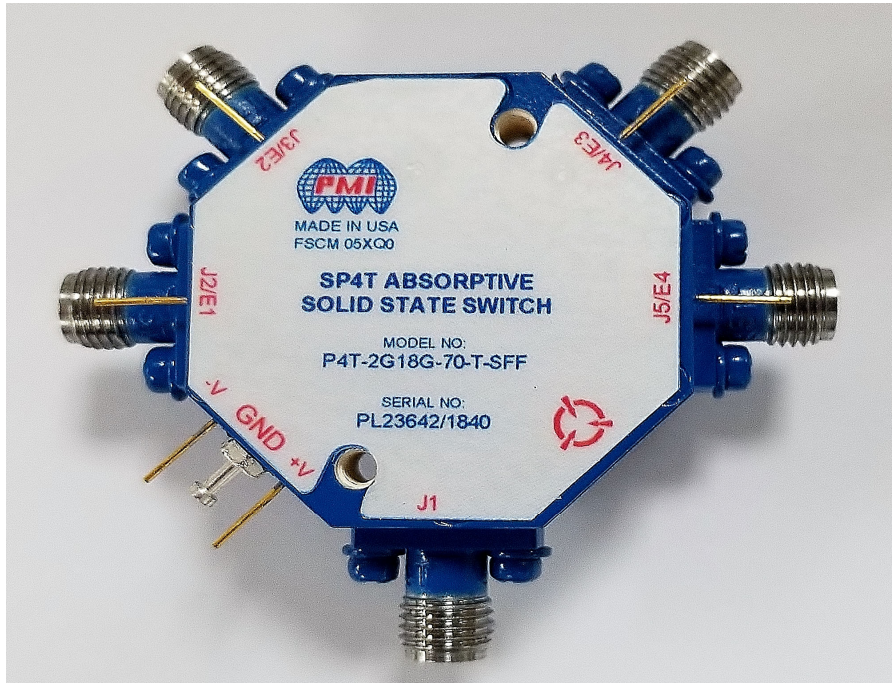




Typical Characteristics For P4T-2G18G-70-T-SFF

PMI MODEL P4T-2G18G-70-T-SFF IS A ABSORPTIVE, HIGH SPEED, SINGLE POLE FOUR THROW SWITCH CAPABLE OF SWITCHING WITHIN 100 ns MAXIMUM. THE FREQUENCY RANGE IS 2.0 GHz TO 18.0 GHz. THIS SWITCH HAS > 70 dB ISOLATION.



January 08, 2018

Designed by: PMI Engineering

Tested by: Hugo Gonzales

Reported by: Lee McGraw

4921 Robert J. Mathews Pkwy Suite 1 El Dorado Hills, CA 95762, USA
Phone: (916)542-1401 Fax: (916)265-2597 Email: sales@pmi-rf.com



Typical Characteristics For P4T-2G18G-70-T-SFF

TABLE OF CONTENTS

1. Product Feature & Mechanical Drawing:	Page 3
2. Summary Test Data:	Page 4
3. Insertion Loss and Return Loss:	Page 5
4. Isolation and Return Loss:	Page 6
5. Switching Speed:	Page 7



Typical Characteristics For P4T-2G18G-70-T-SFF

Product Feature & Mechanical Drawing:

REVISIONS				
ZONE	REV.	DESCRIPTION	DATE	APPROVED
	A1	ORIGINAL RELEASE	7/3/18	

DESCRIPTION

PMI MODEL P4T-2G18G-70-T-SFF IS AN ABSORPTIVE, HIGH SPEED, SINGLE POLE FOUR THROW SWITCH CAPABLE OF SWITCHING WITHIN 100 ns MAXIMUM. THE FREQUENCY RANGE IS 2.0 GHz TO 18.0 GHz. THIS SWITCH HAS > 70 dB ISOLATION.

SPECIFICATIONS

- FREQUENCY RANGE: 2.0 GHz TO 18.0 GHz
- IMPEDANCE: 50 Ω
- INPUT POWER: +30dBm MAX (SURVIVAL)
+20dBm MAX (OPERATING)
- VSWR: 2.0:1 MAX
- INSERTION LOSS: 3.5dB MAX
- ISOLATION: 70dB MIN
- SWITCHING SPEED: 100ns MAX
- DC VOLTAGE: +5VDC, 200mA TYP.
-15VDC, 100mA TYP.
- CONTROL: SOLDER PIN
TTL Logic "0" = Low Loss
TTL Logic "1" = Isolation
E1 Controls J1 - J2
E2 Controls J1 - J3
E3 Controls J1 - J4
E4 Controls J1 - J5
- CONNECTORS IN/OUT: SMA (F)
- SIZE: (L) 1.25" X (W) 1.25" X (H) 0.4"
- FINISH: PAINTED BLUE

ENVIRONMENTAL RATINGS

- TEMPERATURE: -55°C TO + 85°C (OPERATING)
-65°C TO +125°C (STORAGE)
- HUMIDITY: MIL-STD-202F, METHOD 103B COND. B
- SHOCK: MIL-STD-202F, METHOD 213B COND. B
- VIBRATION: MIL-STD-202F, METHOD 204D COND. B
- ALTITUDE: MIL-STD-202F, METHOD 105C COND. B
- TEMPERATURE CYCLE: MIL-STD-202F, METHOD 107D COND. A

NOTE: SPECIFICATIONS WILL VARY OVER OPERATING TEMPERATURE
NOTE: THE ABOVE SPECIFICATIONS ARE SUBJECT TO CHANGE OR REVISION

MECHANICAL OUTLINE

PMI CONFIDENTIAL AND PROPRIETARY

PLANAR MONOLITHICS INDUSTRIES, INC.
7311-F GROVE ROAD
FREDERICK, MARYLAND 21704 USA
TEL: 301-662-5019 FAX: 301-662-1731
WEBSITE: www.pmi-rf.com
E-MAIL: sales@pmi-rf.com
ISO 9001 CERTIFIED

APPROVALS		DATE		TITLE	
DESIGNED	B.Thomas	DATE	11/11/15	PRODUCT FEATURE P4T-2G18G-70-T-SFF	
DRAWN	SPU	DATE	7/3/2018		
ISSUED		DATE			
		SIZE	A	FORM NO.	05XQ0
		DWG NO.	27035280		REV.
		SCALE	N:S	SHEET 1 OF 1	

4921 Robert J. Mathews Pkwy Suite 1 El Dorado Hills, CA 95762, USA
Phone: (916)542-1401 Fax: (916)265-2597 Email: sales@pmi-rf.com



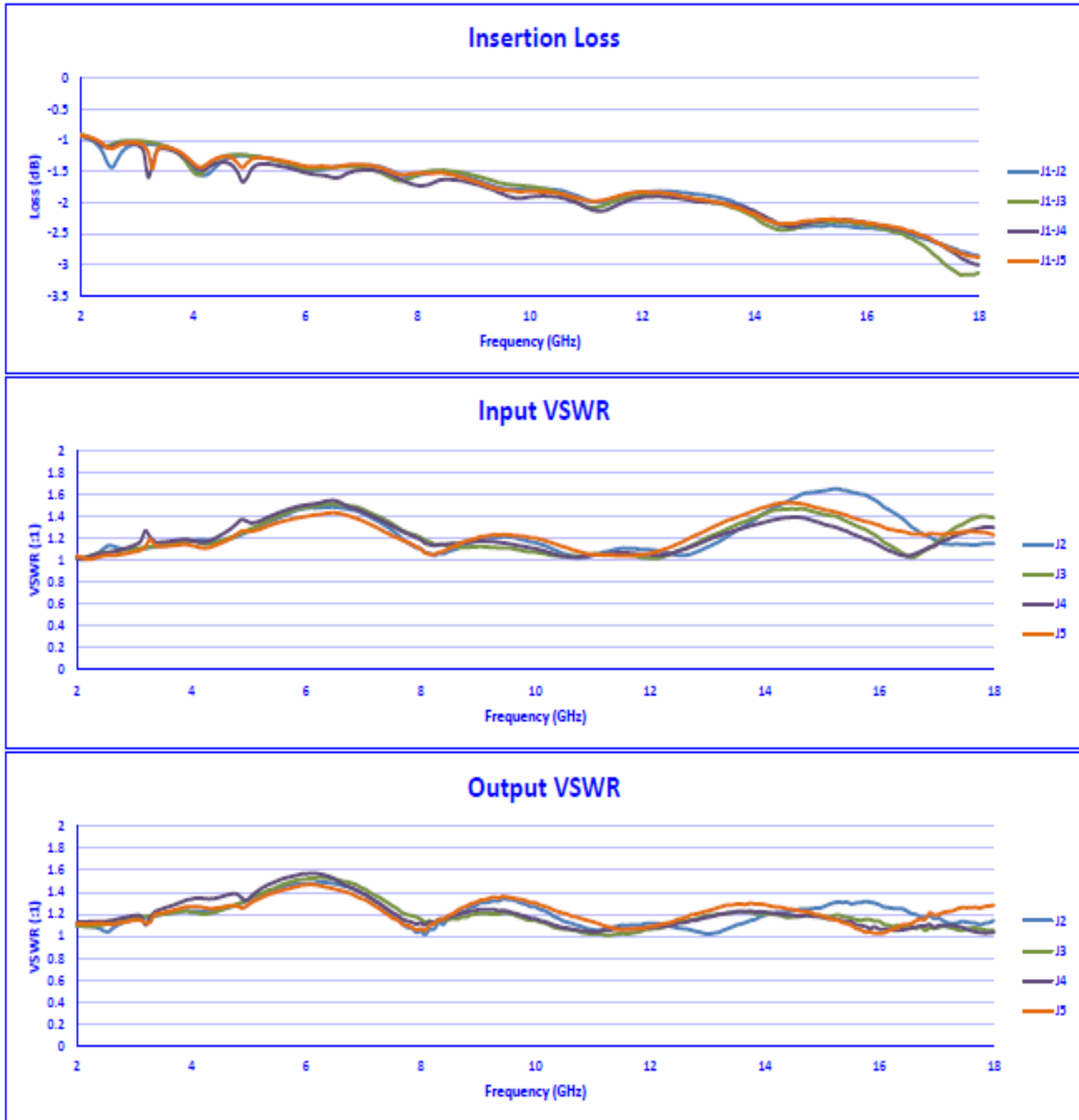
Typical Characteristics For P4T-2G18G-70-T-SFF

Summary Test Data

TEST ITEM NO.	PARAMETERS	SPECIFIED VALUE	TEST RESULTS	QA QC
1	Frequency Range:	2.0 GHz to 18.0 GHz	2.0 GHz to 18.0 GHz	
2	Insertion Loss:	3.5 dB Max.	3.2 dB See Plot	
3	Isolation:	70 dB Min	74 dB See Plot	
4	VSWR: In/Out	2.0:1 Max.	1.7:1 In 1.8:1 Out See Plots	
5	Input Power:	+30 dBm Max. (Survival) +20 dBm Max. (Operational)	Pass See Typical Characteristics	
6	Switching Speed:	100 ns Max.	Pass See Typical Characteristics	
7	DC Supply:	+5 VDC @ 200 mA Typ. -15 VDC @ 100 mA Typ.	+5 VDC @ 112 mA -15 VDC @ 54 mA	
8	Control Signal:	TTL Logic "0" = Low Loss TTL Logic "1" = Isolation E1 Controls J1-J2 E2 Controls J1-J3 E3 Controls J1-J4 E4 Controls J1-J5	Pass	



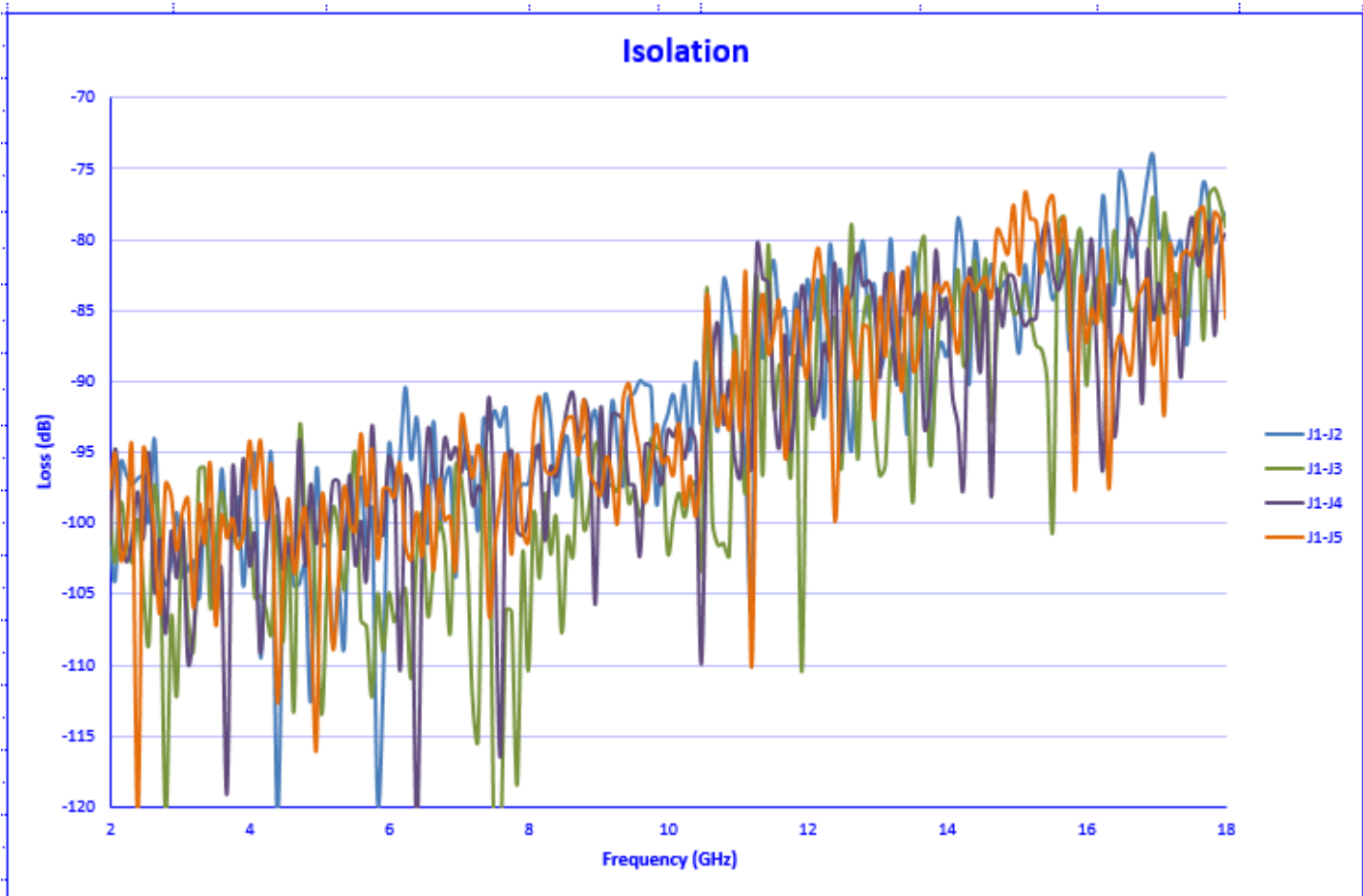
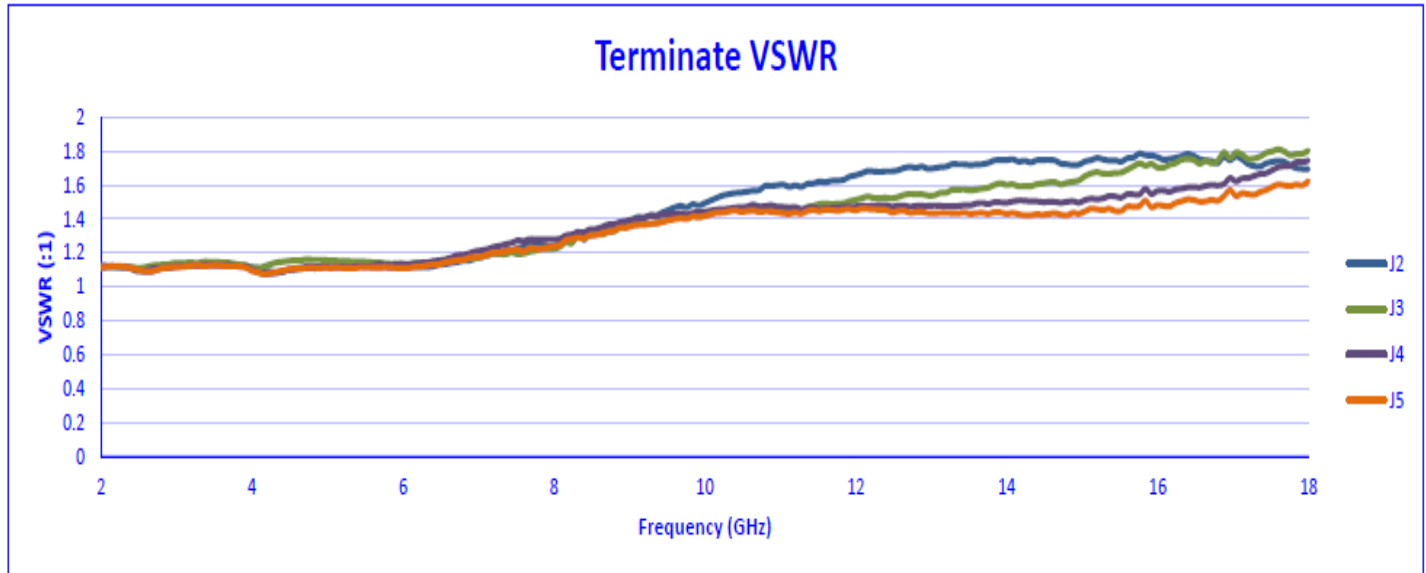
Typical Characteristics For P4T-2G18G-70-T-SFF



4921 Robert J. Mathews Pkwy Suite 1 El Dorado Hills, CA 95762, USA
Phone: (916)542-1401 Fax: (916)265-2597 Email: sales@pmi-rf.com



Typical Characteristics For P4T-2G18G-70-T-SFF



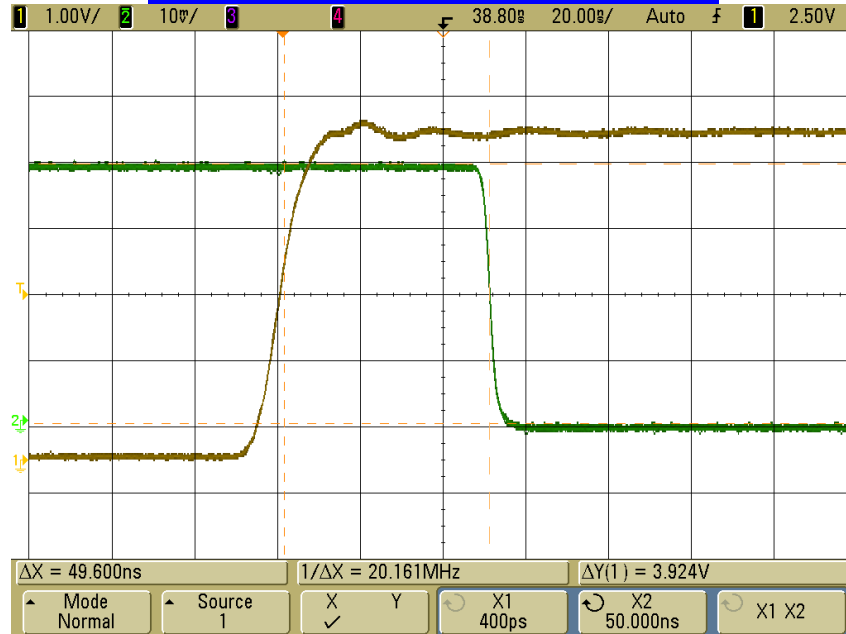
4921 Robert J. Mathews Pkwy Suite 1 El Dorado Hills, CA 95762, USA
Phone: (916)542-1401 Fax: (916)265-2597 Email: sales@pmi-rf.com



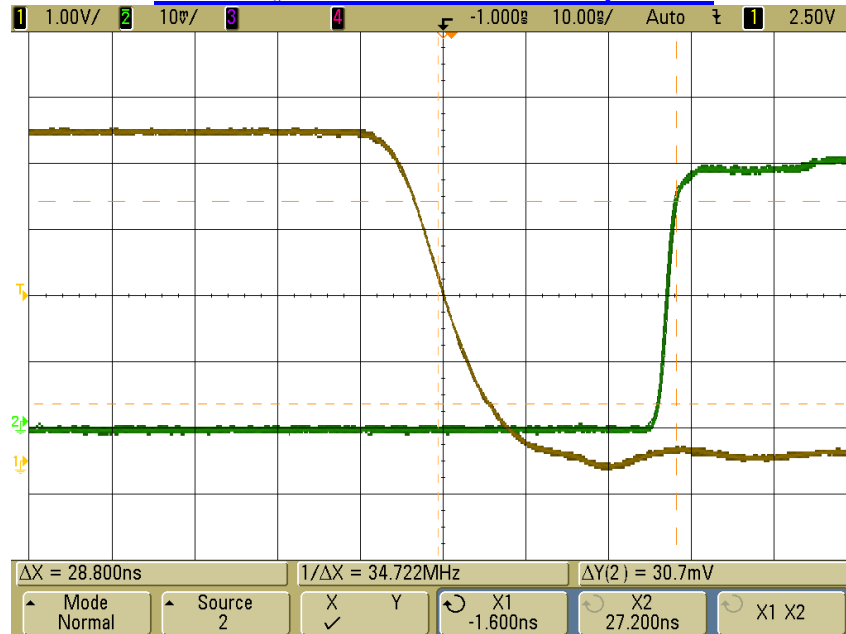
Typical Characteristics For P4T-2G18G-70-T-SFF

Switching Speed:

OFF Delay and Fall Time – 20 ns per Div.



ON Delay and Rise Time – 10 ns per Div.



GREEN TRACE : RF
YELLOW TRACE : TTL

4921 Robert J. Mathews Pkwy Suite 1 El Dorado Hills, CA 95762, USA
Phone: (916)542-1401 Fax: (916)265-2597 Email: sales@pmi-rf.com