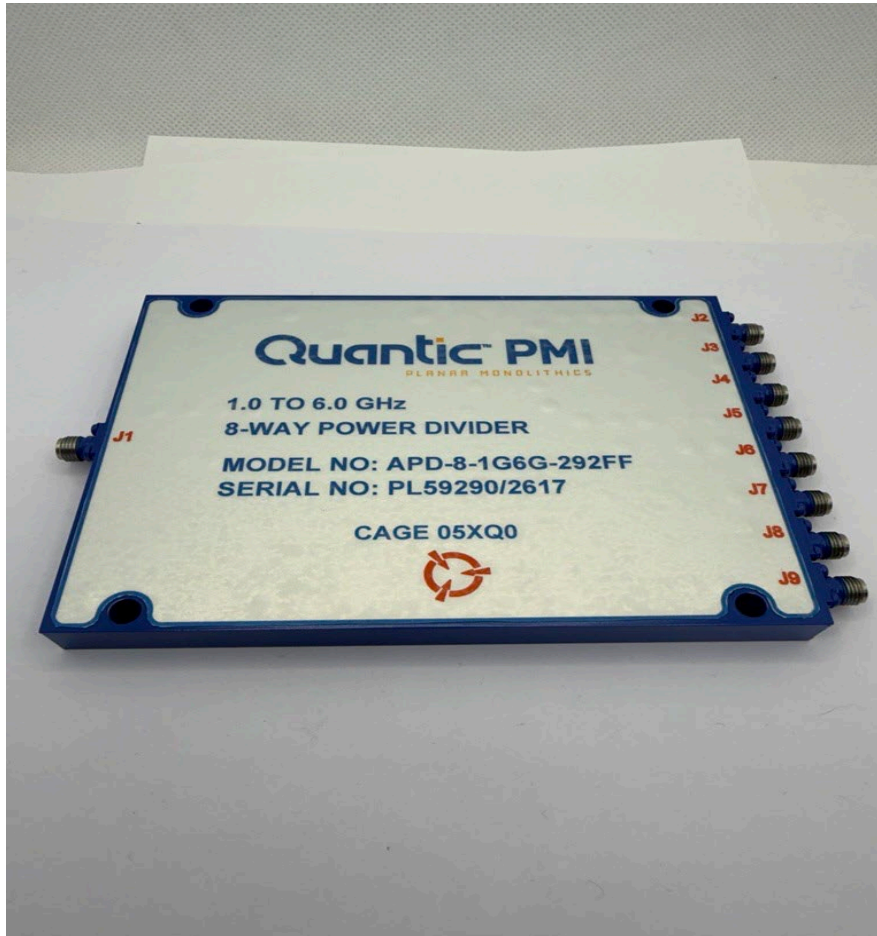


**TYPICAL CHARACTERISTICS
ON
APD-8-1G6G-292FF**

PMI MODEL NUMBER APD-8-1G6G-292FF IS AN EIGHT WAY POWER DIVIDER OPERATING OVER THE 1 TO 6 GHz FREQUENCY RANGE. THIS MODEL HAS A MAXIMUM INSERTION LOSS OF 2.5 dB FROM 1 TO 6 GHz. THE COMPACT 5.0" X 3.7" X.43" HOUSING IS OUTFITTED WITH 2.92mm FEMALE CONNECTORS.



TESTED BY: K. WAGAMAN
REPORTED BY: G.MENDEZ
DATE: 04/10/26

TYPICAL CHARACTERISTICS ON APD-8-1G6G-292FF

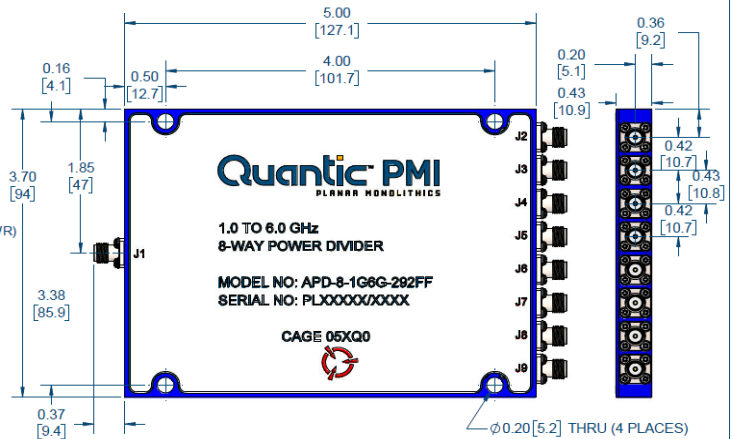
PRODUCT FEATURE

DESCRIPTION:

PMI MODEL NUMBER APD-8-1G6G-292FF IS AN EIGHT WAY POWER DIVIDER OPERATING OVER THE 1 TO 6 GHz FREQUENCY RANGE. THIS MODEL HAS A MAXIMUM INSERTION LOSS OF 2.5 dB FROM 1 TO 6 GHz. THE COMPACT 5.0" X 3.7" X .43" HOUSING IS OUTFITTED WITH 2.92 mm FEMALE CONNECTORS.

SPECIFICATIONS:

- FREQUENCY RANGE:..... 1 TO 6 GHz
- INSERTION LOSS:..... 1 TO 2 GHz - 2.0 dB MAX
2 TO 6 GHz - 2.5 dB MAX
- INSERTION LOSS FLATNESS (REF LINE OF BEST FIT):..... 1 TO 6 GHz - ± 1 dB MAX
- VSWR (INPUT):..... 1 TO 2 GHz - 2.6:1 MAX
2 TO 6 GHz - 2.1:1 MAX
- VSWR (OUTPUT):..... 1 TO 2 GHz - 1.5:1 MAX
2 TO 6 GHz - 1.7:1 MAX
- ISOLATION:..... 1 TO 2 GHz - 10 dB TYP
2 TO 6 GHz - 20 dB TYP
- AMPLITUDE BALANCE:..... 1 TO 2 GHz - ± 0.5 dB MAX
2 TO 6 GHz - ± 0.3 dB MAX
- PHASE BALANCE:..... 1 TO 2 GHz - 3° MAX
2 TO 6 GHz - 4° MAX
- AVERAGE POWER:..... 25 WATTS (INTO 1.2:1 LOAD VSWR)
- CONNECTORS:..... 2.92 mm FEMALE REMOVABLE
- SIZE:..... 5.00" X 3.70" X 0.43"
[127.1 X 94.0 X 10.9 mm]
- FINISH:..... PAINTED BLUE



ENVIRONMENTAL RATINGS:

- TEMPERATURE:..... -55°C TO +85°C (OPERATING)
-65°C TO +125°C (STORAGE)
- HUMIDITY:..... MIL-STD-202, METHOD 103B COND. B
- SHOCK:..... MIL-STD-202, METHOD 213B COND. B
- VIBRATION:..... MIL-STD-202, METHOD 204D COND. B
- ALTITUDE:..... MIL-STD-202, METHOD 105 COND. B
- TEMPERATURE CYCLE:..... MIL-STD-202, METHOD 107D

NOTE: SPECIFICATIONS WILL VARY OVER TEMPERATURE
NOTE: THE ABOVE SPECIFICATIONS ARE SUBJECT TO CHANGE OR REVISION

ZONE	REV.	DESCRIPTION	DATE	APPROVED
	A1	ORIGINAL RELEASE	11042018	

PMI CONFIDENTIAL AND PROPRIETARY

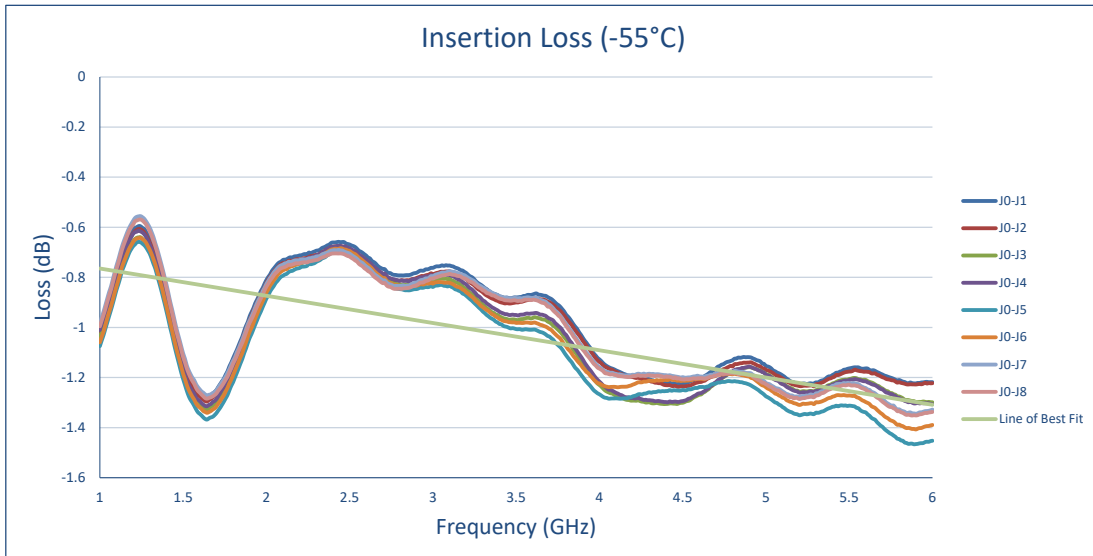
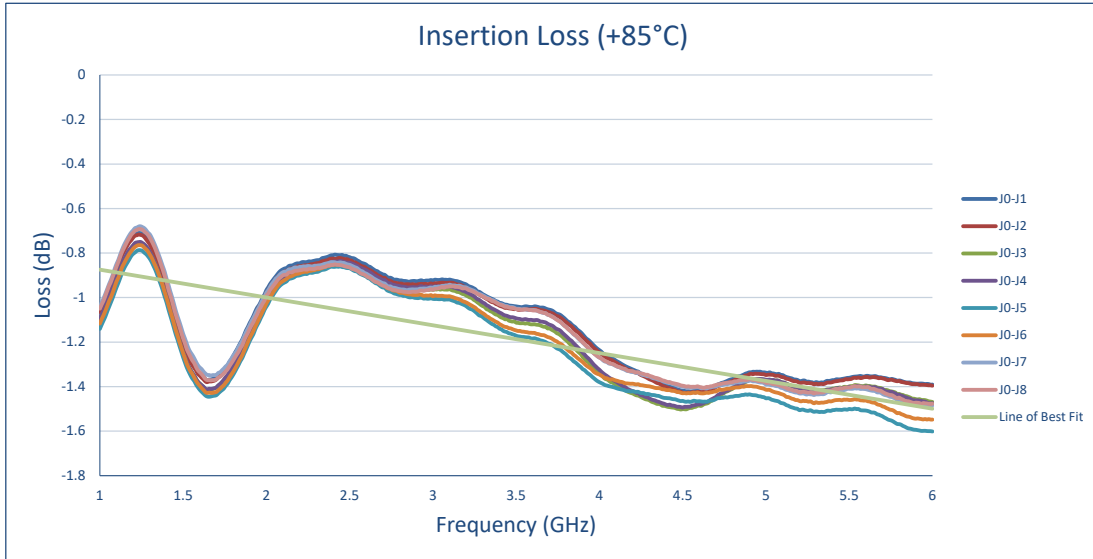
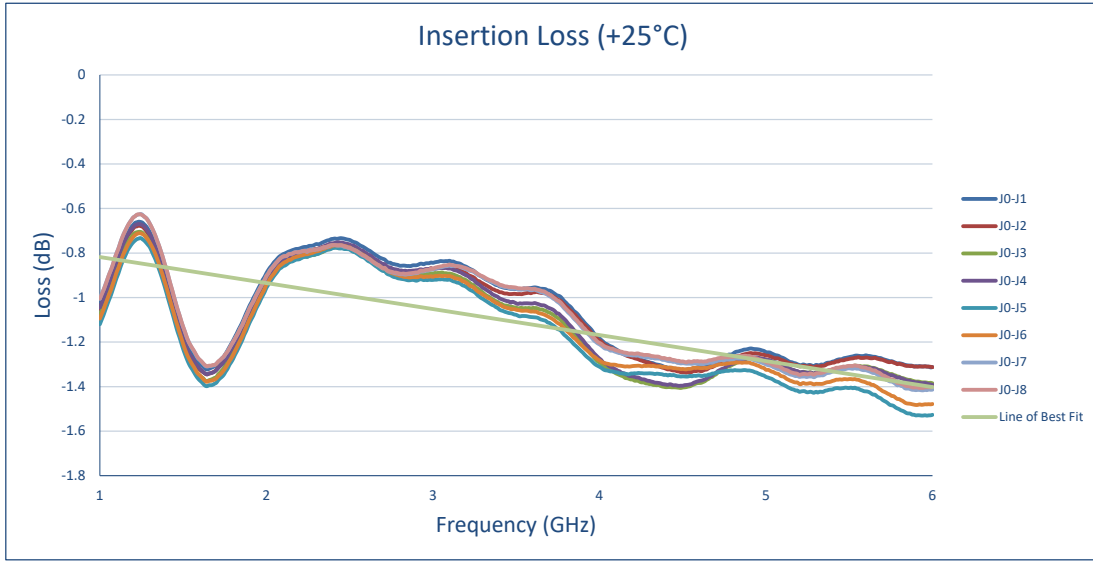
APPROVALS		DATE	TITLE	
DESIGNED	G. MENDEZ	11042018	OUTLINE	
TESTED			SIZE	PROJ NO.
			B	05XQ0
			SCALE	27053741
				REV. A1
				SHEET 1 OF 1

**TYPICAL CHARACTERISTICS
ON
APD-8-1G6G-292FF**

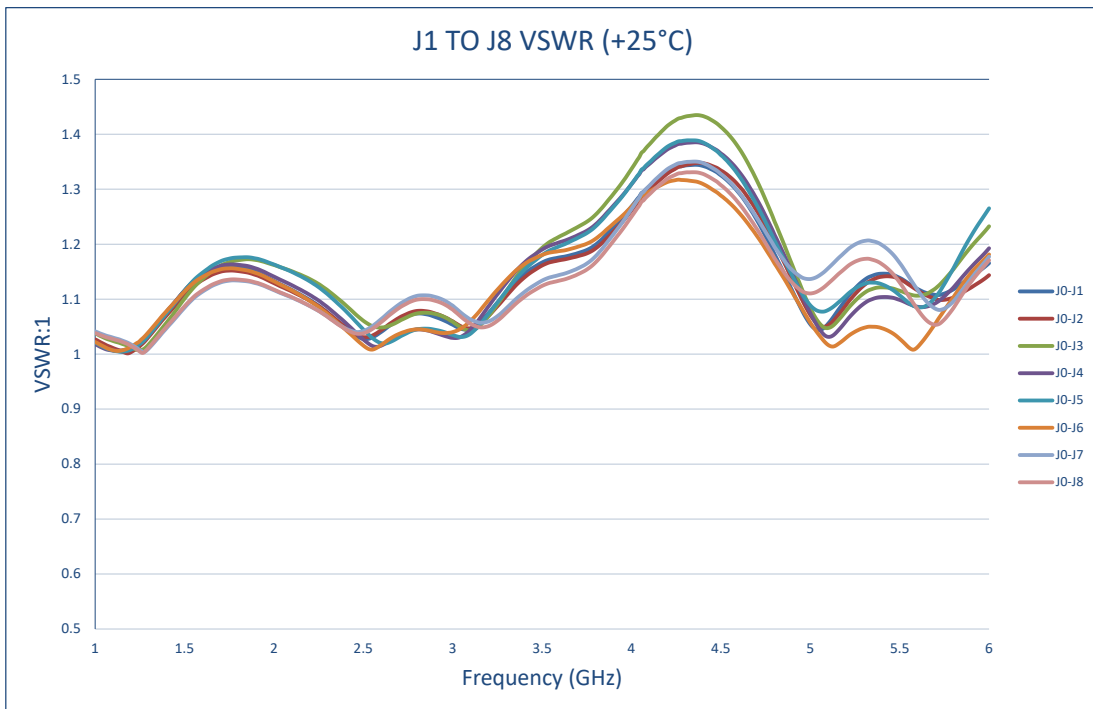
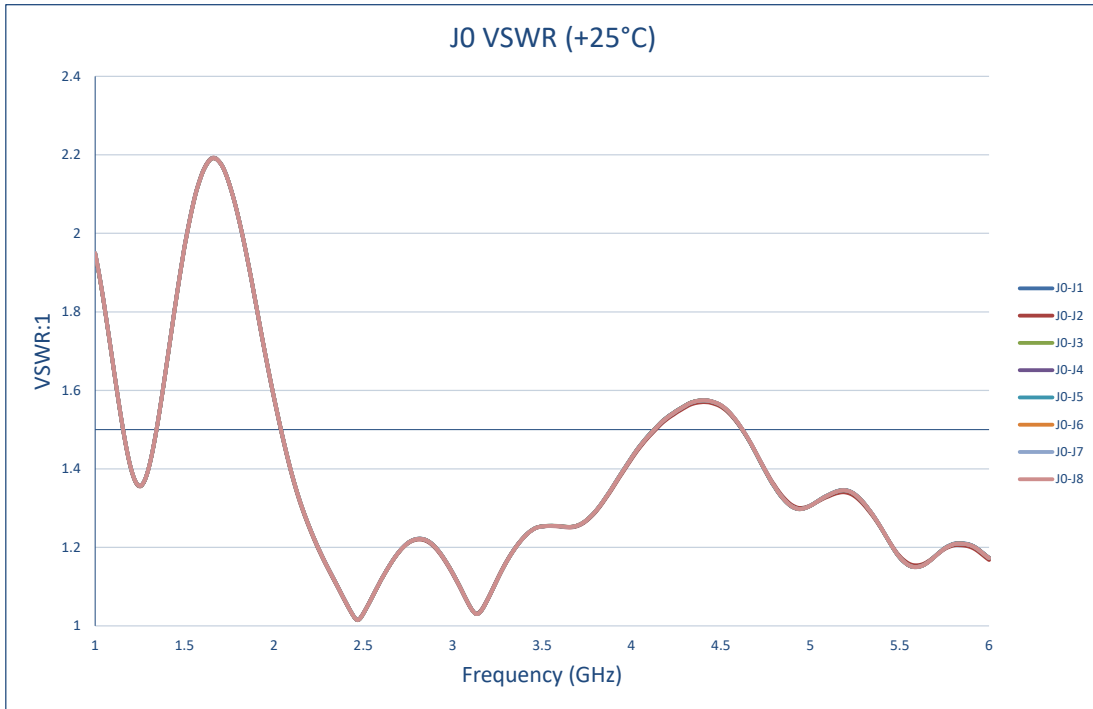
PRODUCT SPECIFICATIONS

TEST ITEM NO.	PARAMETERS	SPECIFIED VALUE	TEST RESULTS		
			-55°C	+25°C	+85°C
1	Frequency Range	1 GHz – 6GHz	1 GHz – 6GHz		
2	Insertion Loss	1 TO 6 GHz - ± 2.0 dB MAX 2 TO 6 GHz - ± 2.5 dB MAX	1.47 dB See Graph	1.53 dB See Graph	1.6 dB See Graph
3	VSWR	INPUT: 1 TO 2 GHz - 2.6:1 MAX 2 TO 6 GHz - 2.1:1 MAX	2.23:1 See Graph	2.19:1 See Graph	2.16:1 See Graph
		OUTPUT: 1 TO 2 GHz - 1.5:1 MAX 2 TO 6 GHz - 1.7:1 MAX	1.44:1 See Graph	1.43:1 See Graph	1.44:1 See Graph
4	Isolation	1 TO 2 GHz - 10 dB TYP 2 TO 6 GHz - 20 dB TYP	11 dB See Graph	11 dB See Graph	11 dB See Graph
5	Amplitude Balance	1 TO 2 GHz - ± 0.5 dB MAX 2 TO 6 GHz - ± 0.3 dB MAX	0.12 dB MAX See Graph	0.11 dB MAX See Graph	0.11 dB MAX See Graph
			-0.12 dB MIN See Graph	-0.11 dB MIN See Graph	-0.11 dB MIN See Graph
6	Phase Balance	1 TO 2 GHz - 3° MAX 2 TO 6 GHz - 4° MAX	1.02° MAX See Graph	1.04° MAX See Graph	1.37° MAX See Graph
			-1.02° MIN See Graph	-1.04° MIN See Graph	-1.37° MIN See Graph
7	Power Handling	Forward: 40 W MAX Reversed: 1 W MAX	Forward: 40 W Reversed: 1 W See Graph	Forward: 40 W Reversed: 1 W See Graph	Forward: 40 W Reversed: 1 W See Graph
8	Insertion Loss Flatness (Ref Line of Best Fit)	1 TO 6 GHz - ± 1 dB MAX	+0.19 dB MAX -0.71 dB MAX	+0.21 dB MAX -0.7 dB MAX	+0.19 dB MAX -0.73 dB MAX

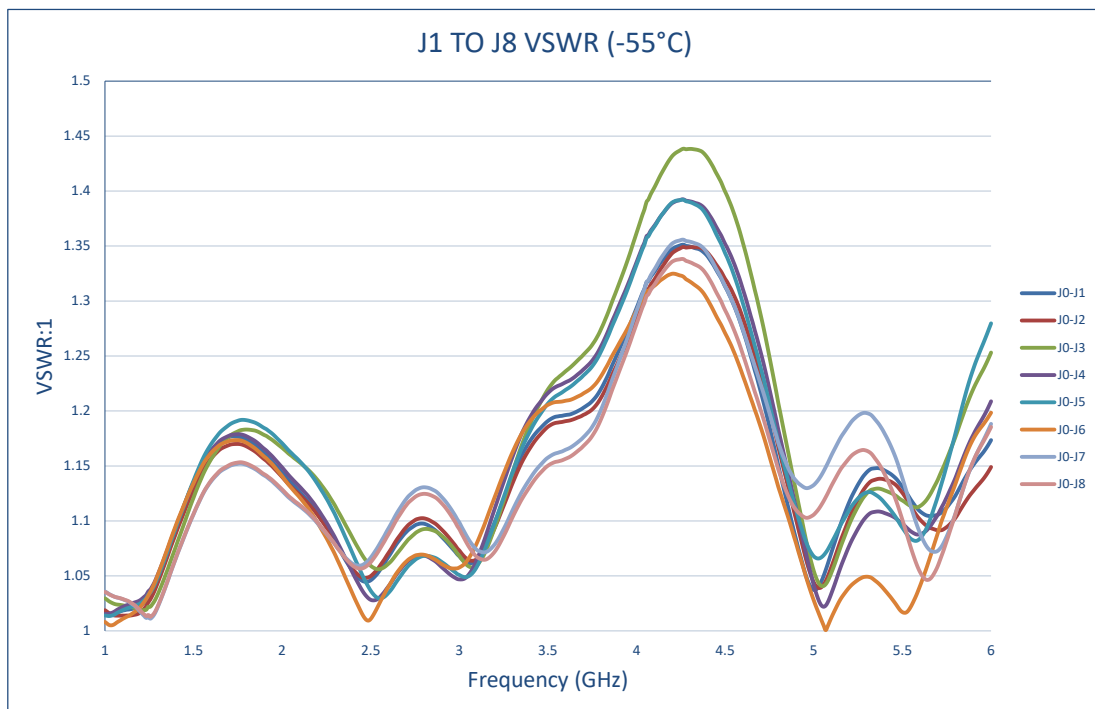
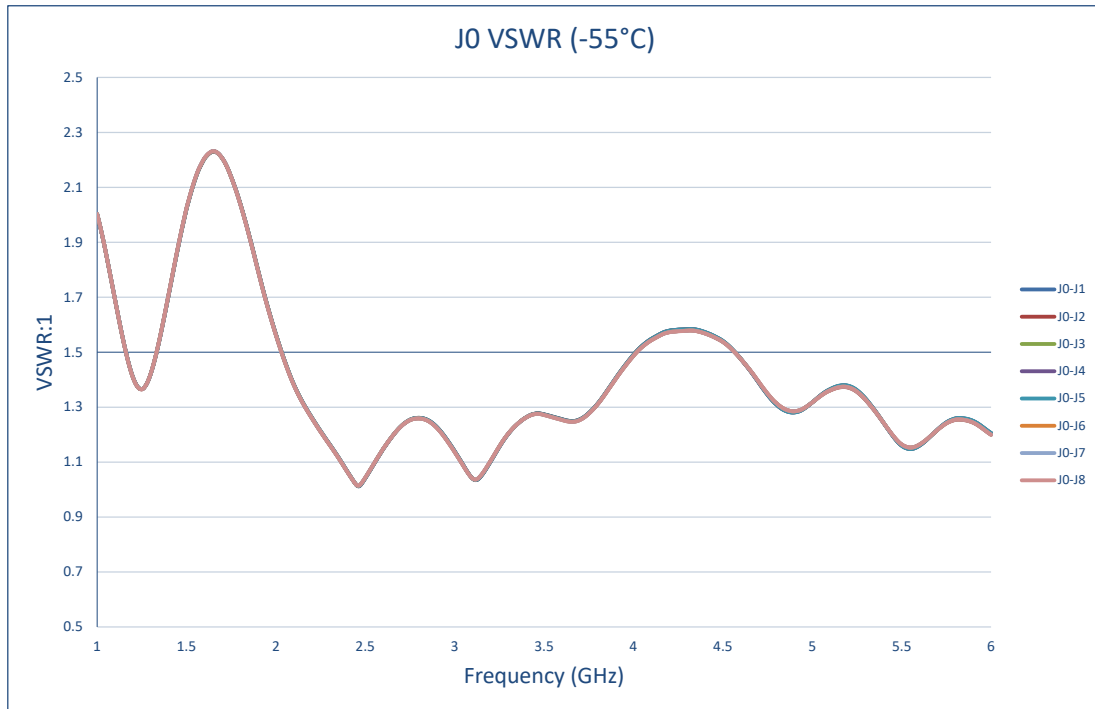
TYPICAL CHARACTERISTICS
ON
APD-8-1G6G-292FF



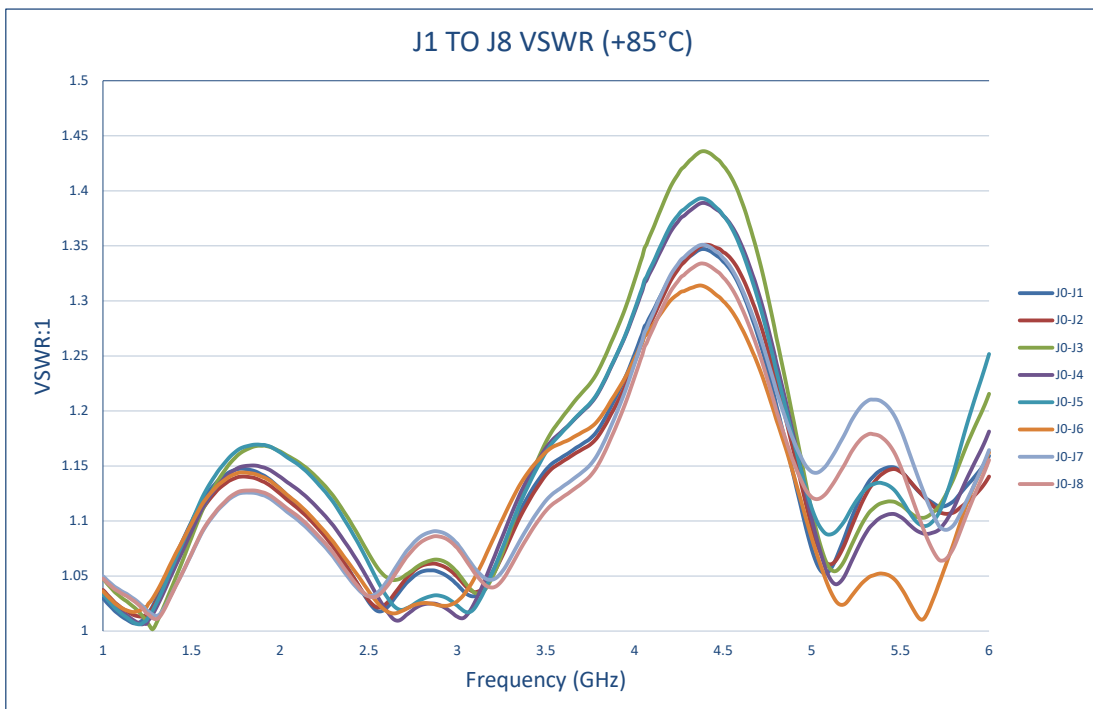
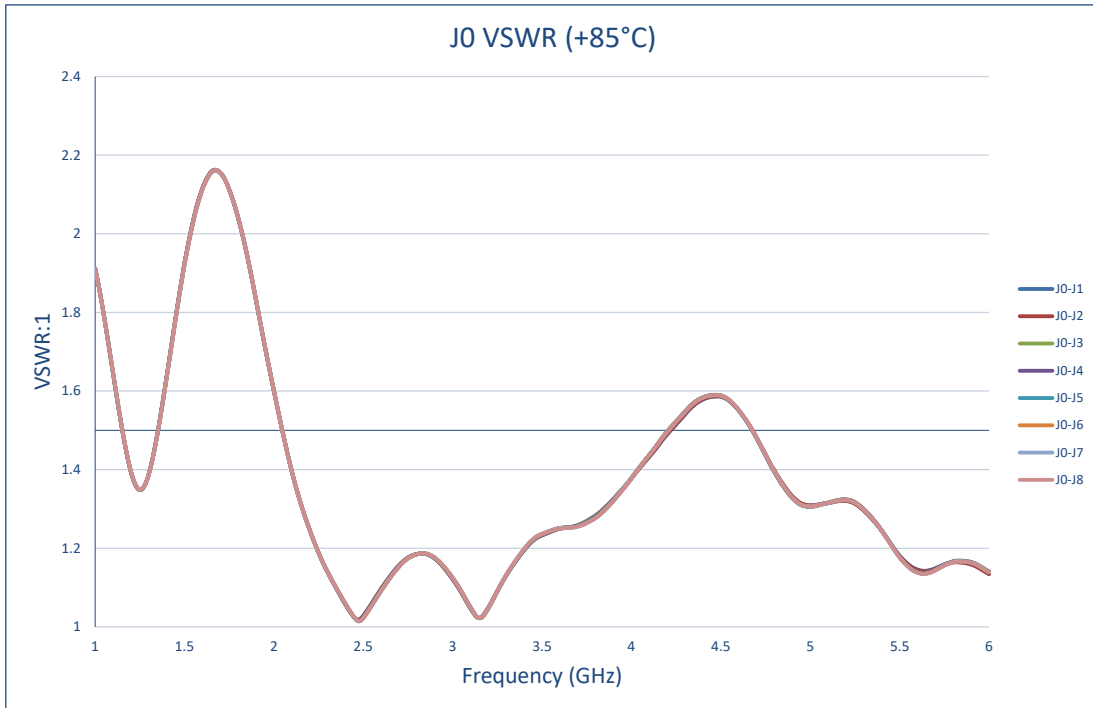
TYPICAL CHARACTERISTICS
ON
APD-8-1G6G-292FF



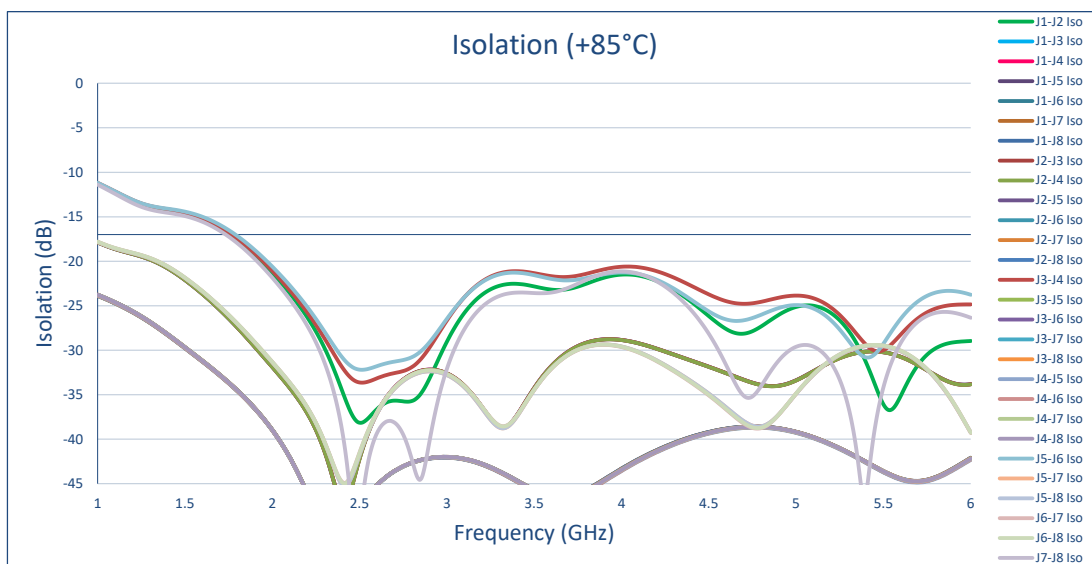
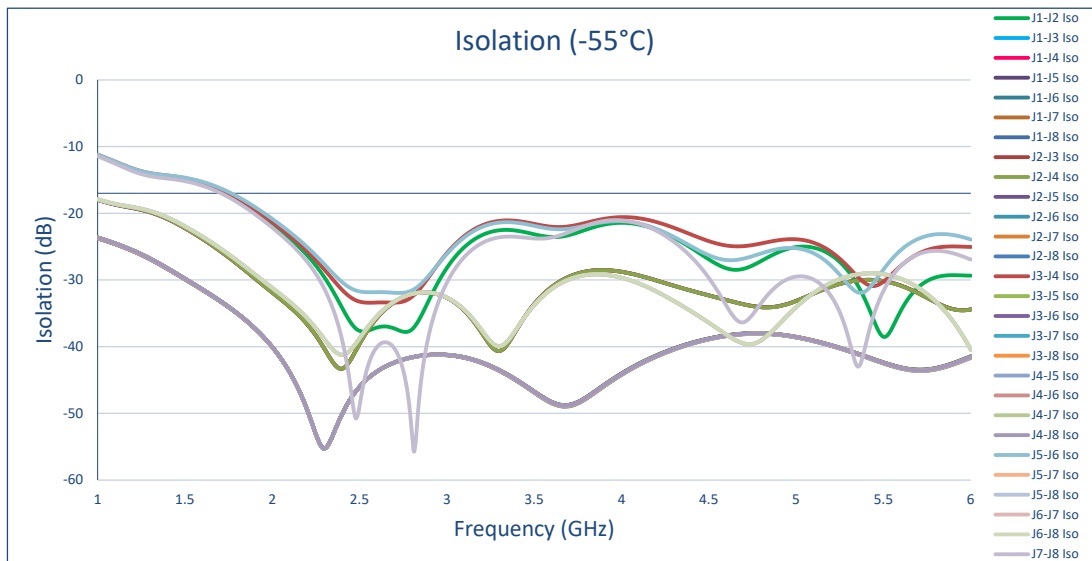
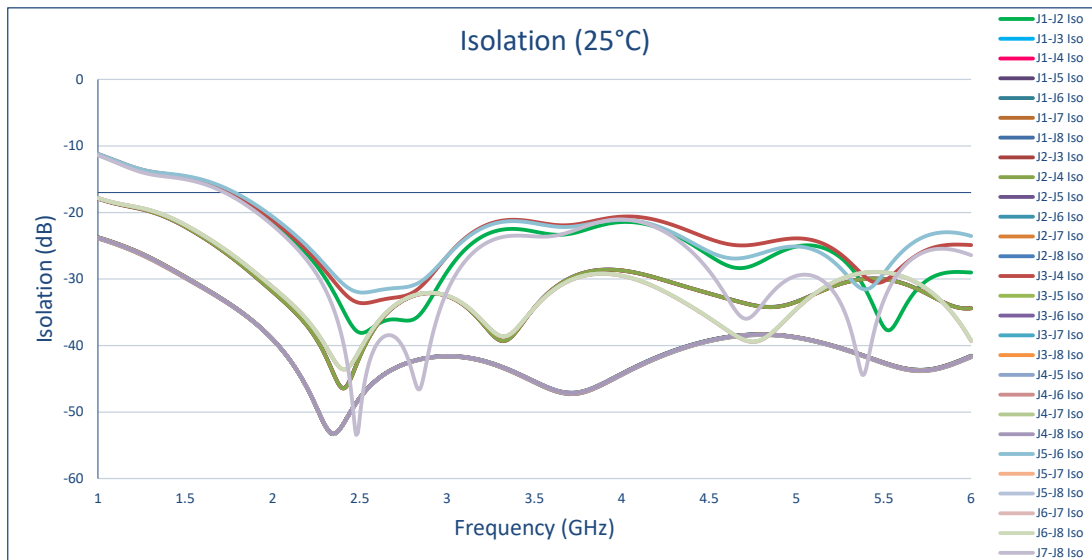
TYPICAL CHARACTERISTICS
ON
APD-8-1G6G-292FF



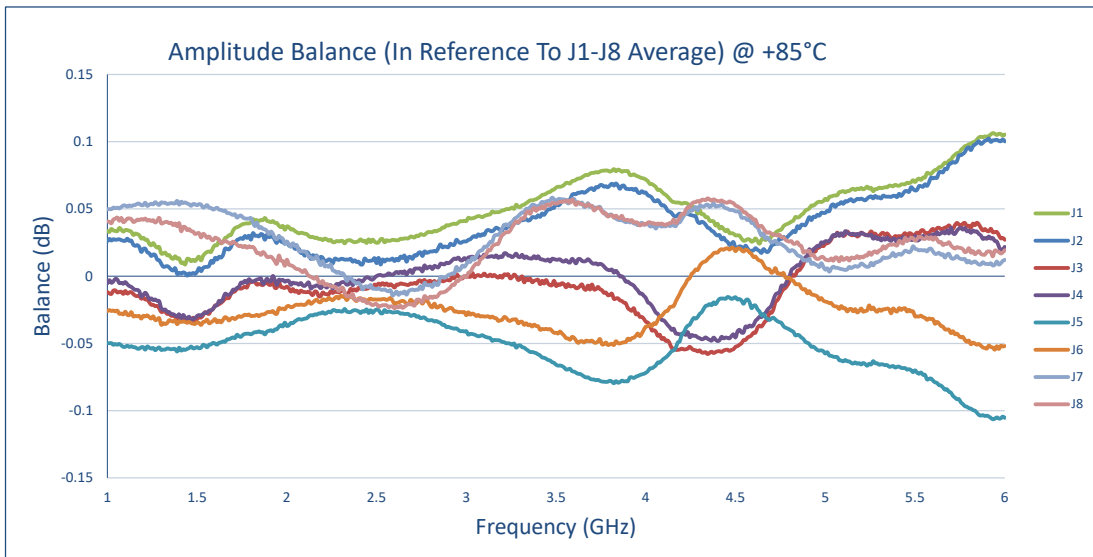
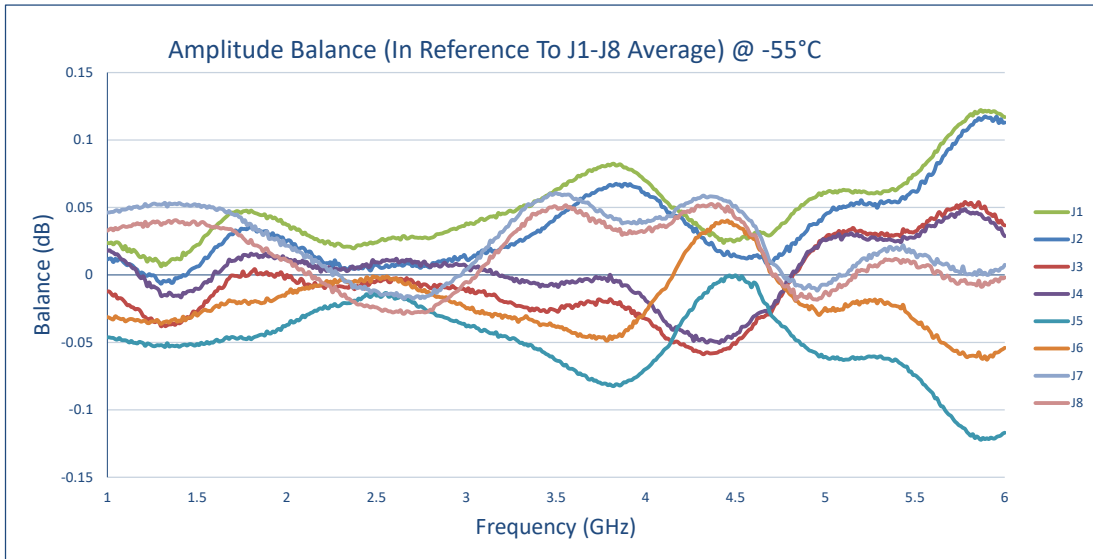
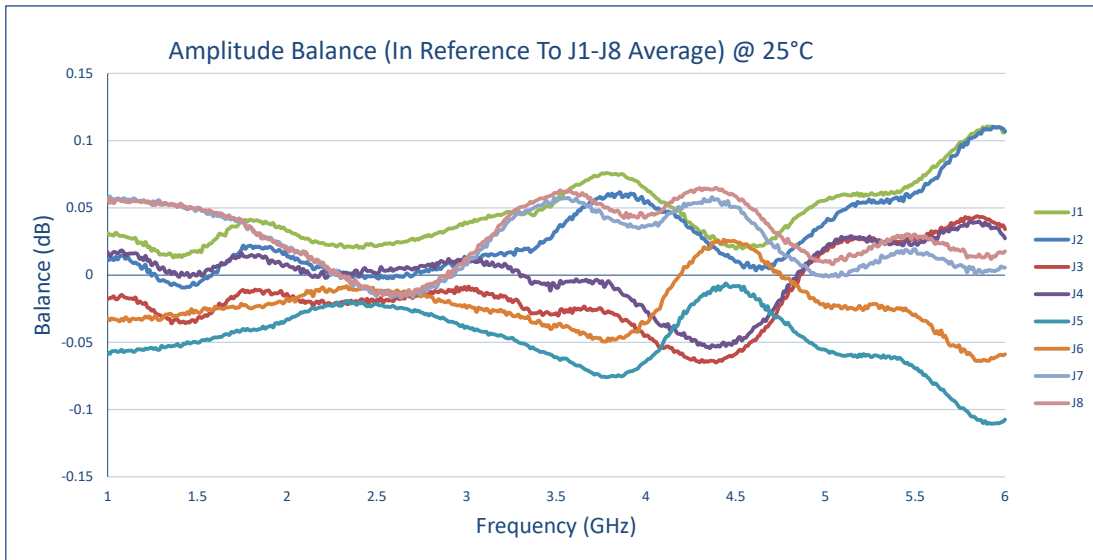
TYPICAL CHARACTERISTICS
ON
APD-8-1G6G-292FF



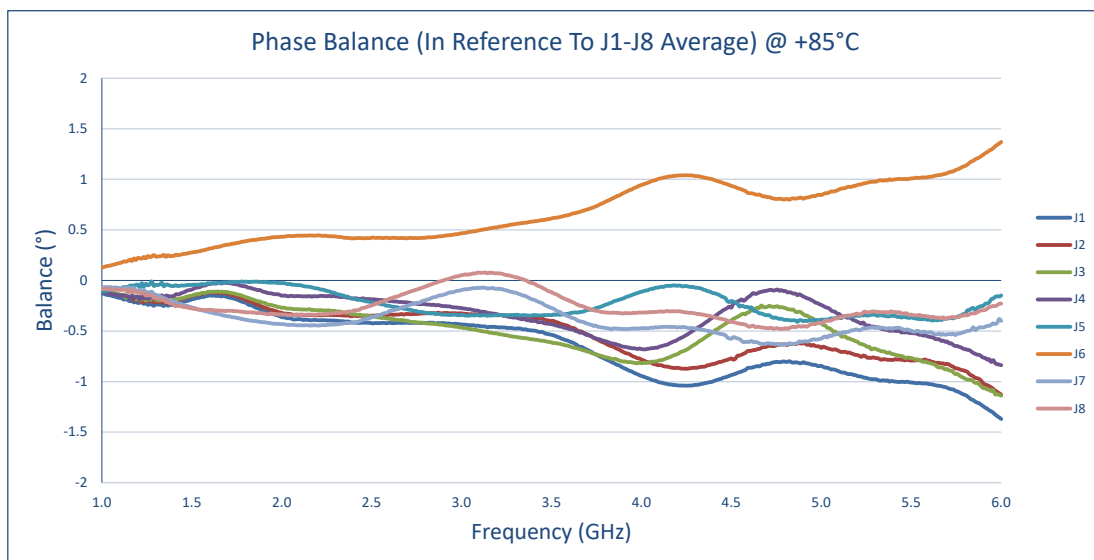
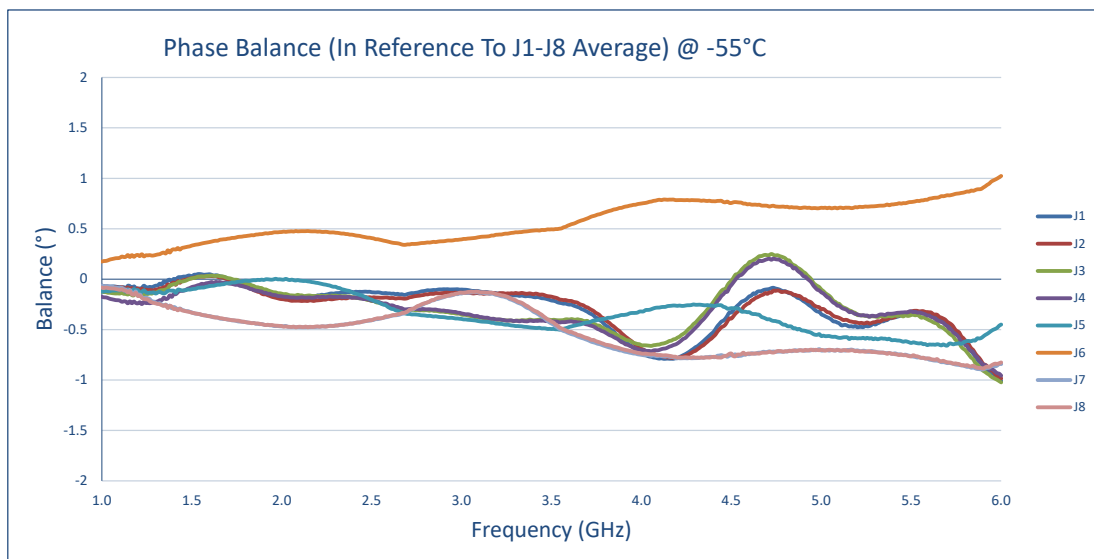
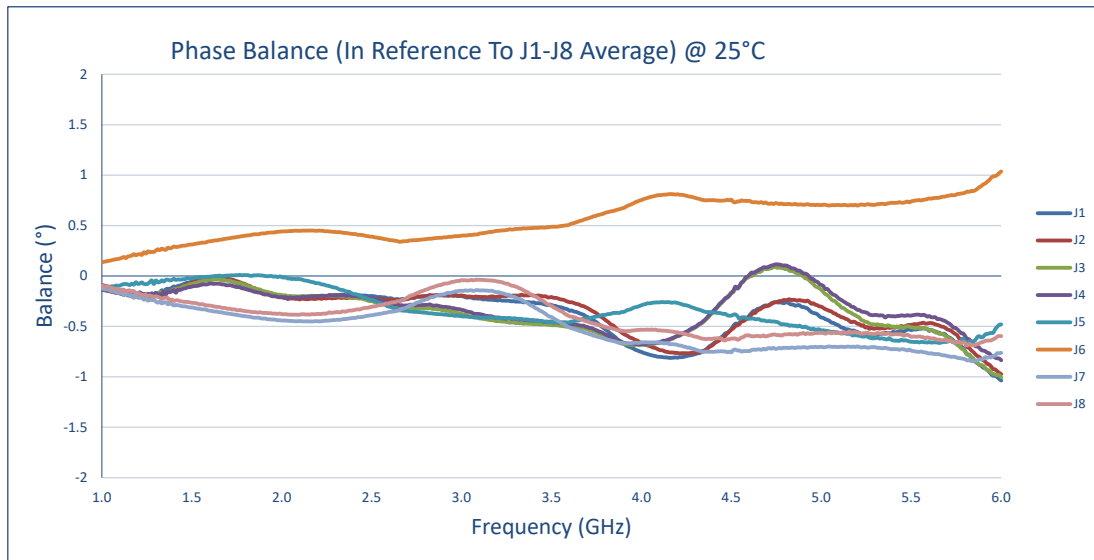
TYPICAL CHARACTERISTICS
ON
APD-8-1G6G-292FF



TYPICAL CHARACTERISTICS
ON
APD-8-1G6G-292FF



TYPICAL CHARACTERISTICS
ON
APD-8-1G6G-292FF



TYPICAL CHARACTERISTICS
ON
APD-8-1G6G-292FF

