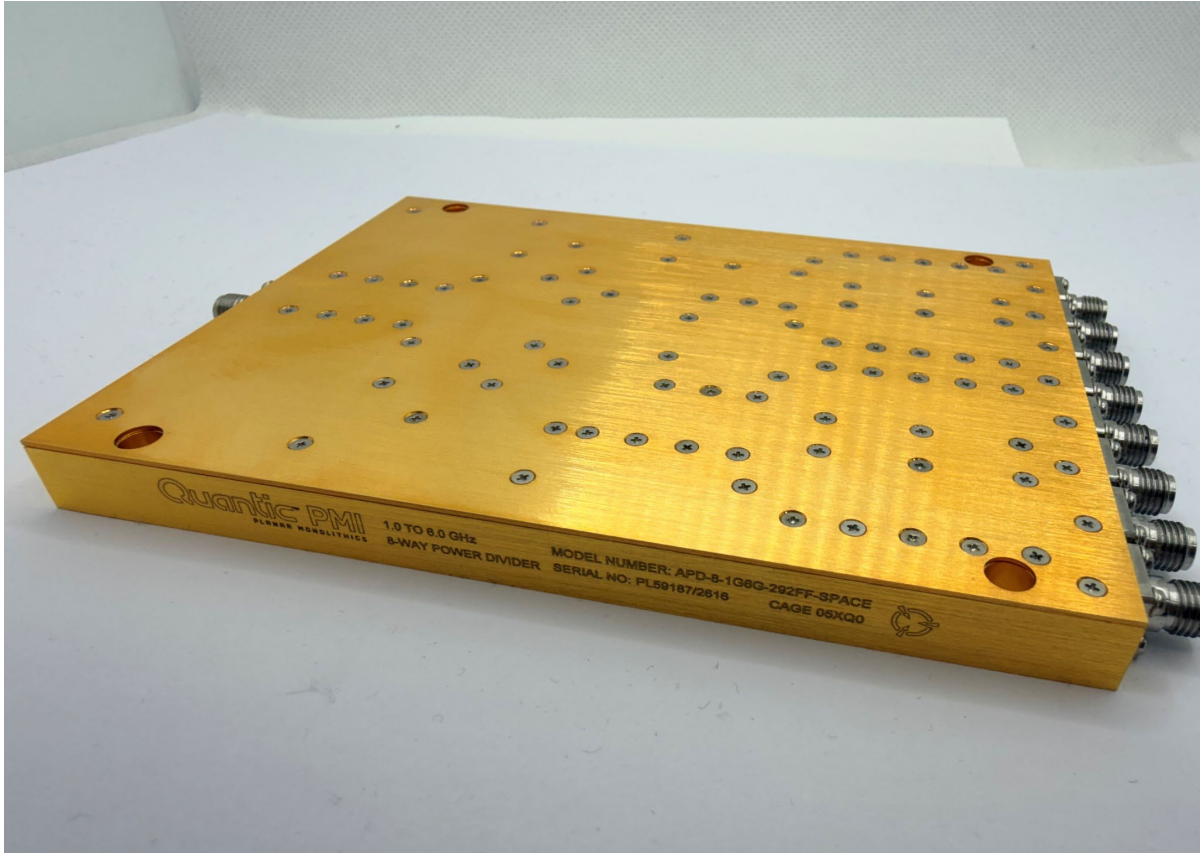


TYPICAL CHARACTERISTICS
ON
APD-8-1G6G-292FF-SPACE



TESTED BY: K. WAGAMAN
REPORTED BY: G.MENDEZ
DATE: 04/10/26

TYPICAL CHARACTERISTICS ON APD-8-1G6G-292FF-SPACE

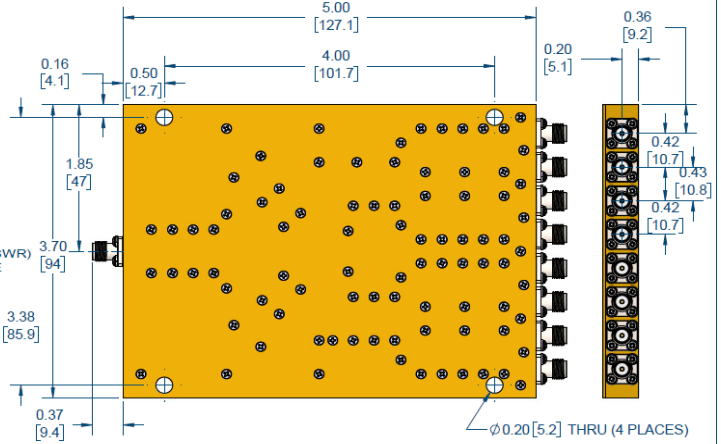
PRODUCT FEATURE

DESCRIPTION:

PMI MODEL NUMBER APD-8-1G6G-292FF-SPACE IS AN EIGHT WAY POWER DIVIDER OPERATING OVER THE 1 TO 6 GHz FREQUENCY RANGE. THIS MODEL HAS A MAXIMUM INSERTION LOSS OF 2.5 dB FROM 1 TO 6 GHz. THE COMPACT 5.0" X 3.7" X .43" HOUSING IS OUTFITTED WITH 2.92 mm FEMALE CONNECTORS.

SPECIFICATIONS:

- FREQUENCY RANGE:..... 1 TO 6 GHz
- INSERTION LOSS:..... 1 TO 2 GHz - 2.0 dB MAX
2 TO 6 GHz - 2.5 dB MAX
- INSERTION LOSS FLATNESS (REF LINE OF BEST FIT):..... 1 TO 6 GHz - ± 1 dB MAX
- VSWR (INPUT):..... 1 TO 2 GHz - 2.6:1 MAX
2 TO 6 GHz - 2.1:1 MAX
- VSWR (OUTPUT):..... 1 TO 2 GHz - 1.5:1 MAX
2 TO 6 GHz - 1.7:1 MAX
- ISOLATION:..... 1 TO 2 GHz - 10 dB TYP
2 TO 6 GHz - 20 dB TYP
- AMPLITUDE BALANCE:..... 1 TO 2 GHz - ± 0.5 dB MAX
2 TO 6 GHz - ± 0.3 dB MAX
- PHASE BALANCE:..... 1 TO 2 GHz - 3° MAX
2 TO 6 GHz - 4° MAX
- AVERAGE POWER:..... 25 WATTS (INTO 1:2:1 LOAD VSWR)
- CONNECTORS:..... 2.92 mm FEMALE REMOVABLE
- SIZE:..... 5.00" X 3.70" X 0.43"
[127.1 X 94.0 X 10.9 mm]
EXCLUDING CONNECTORS
- FINISH:..... GOLD PLATED
ENGRAVED MARKINGS



ENVIRONMENTAL RATINGS:

- TEMPERATURE:..... -55°C TO +85°C (OPERATING)
-65°C TO +125°C (STORAGE)
- HUMIDITY:..... MIL-STD-202, METHOD 103B COND. B
- SHOCK:..... MIL-STD-202, METHOD 213B COND. B
- VIBRATION:..... MIL-STD-202, METHOD 204D COND. B
- ALTITUDE:..... MIL-STD-202, METHOD 105D COND. B
- TEMPERATURE CYCLE:..... MIL-STD-202, METHOD 107D COND. A

NOTE: SPECIFICATIONS WILL VARY OVER TEMPERATURE
NOTE: THE ABOVE SPECIFICATIONS ARE SUBJECT TO CHANGE OR REVISION

ZONE	REV.	DESCRIPTION	DATE	APPROVED
	A1	ORIGINAL RELEASE	11040208	



PMI CONFIDENTIAL AND PROPRIETARY

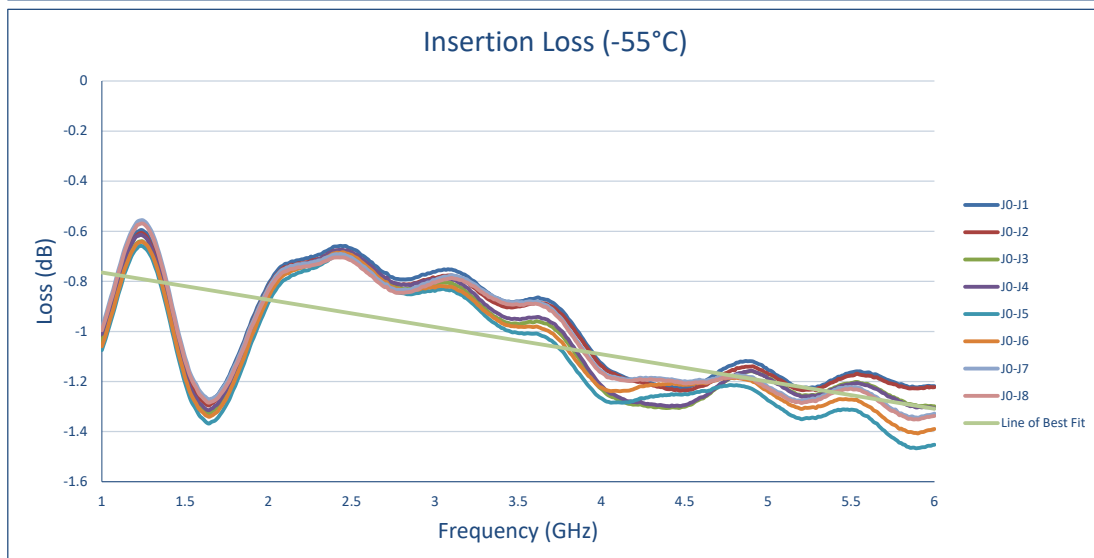
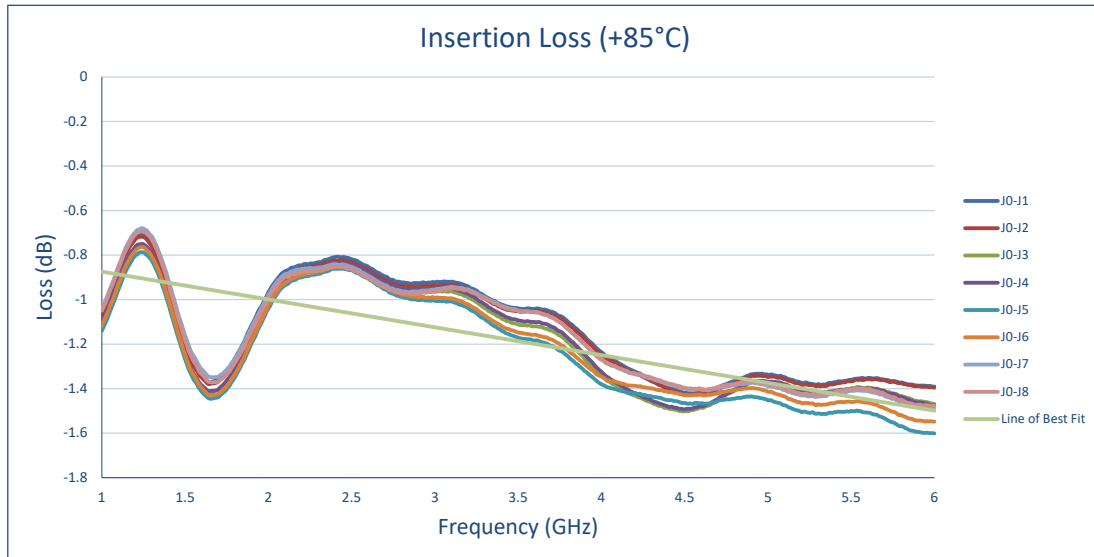
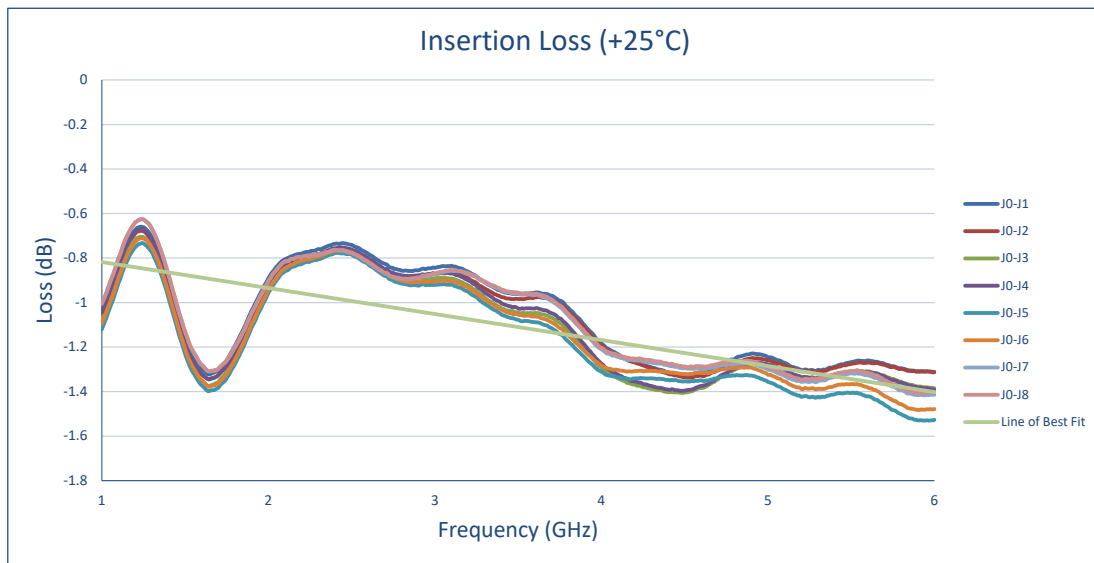
APPROVALS		DATE	TITLE	
DESIGN	G. MENDEZ	11040208	OUTLINE	
TESTED			REV	REV
			B	05XQ0
			SCALE	1:2
			27053761	A1
				SHEET 1 OF 1

**TYPICAL CHARACTERISTICS
ON
APD-8-1G6G-292FF-SPACE**

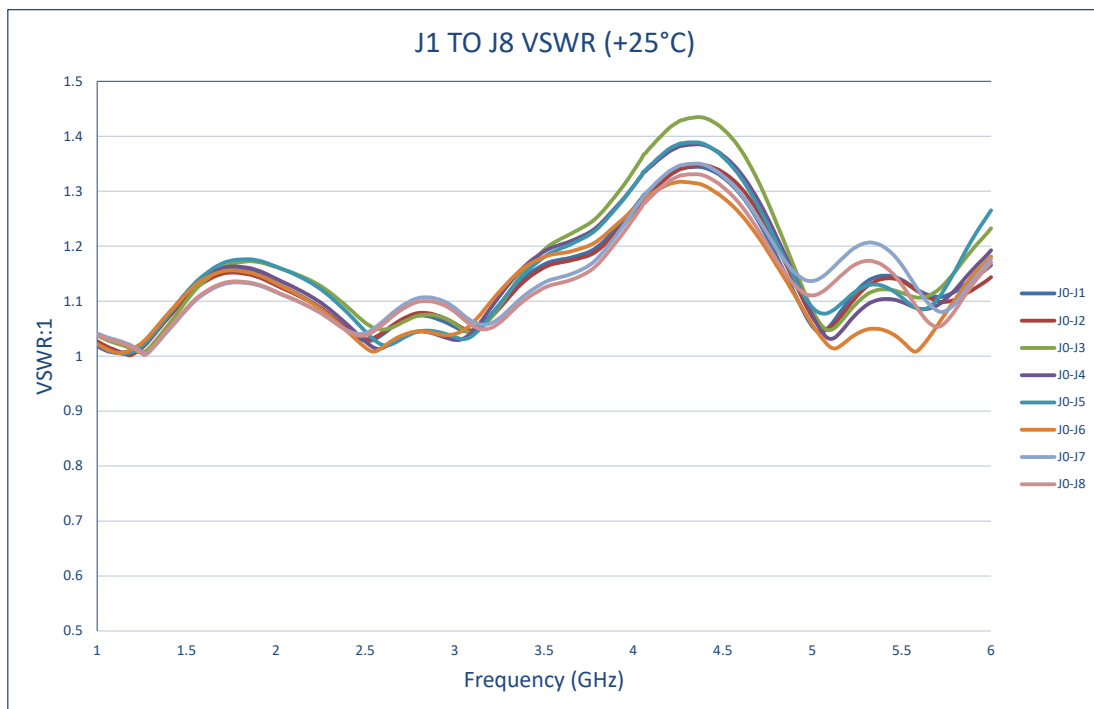
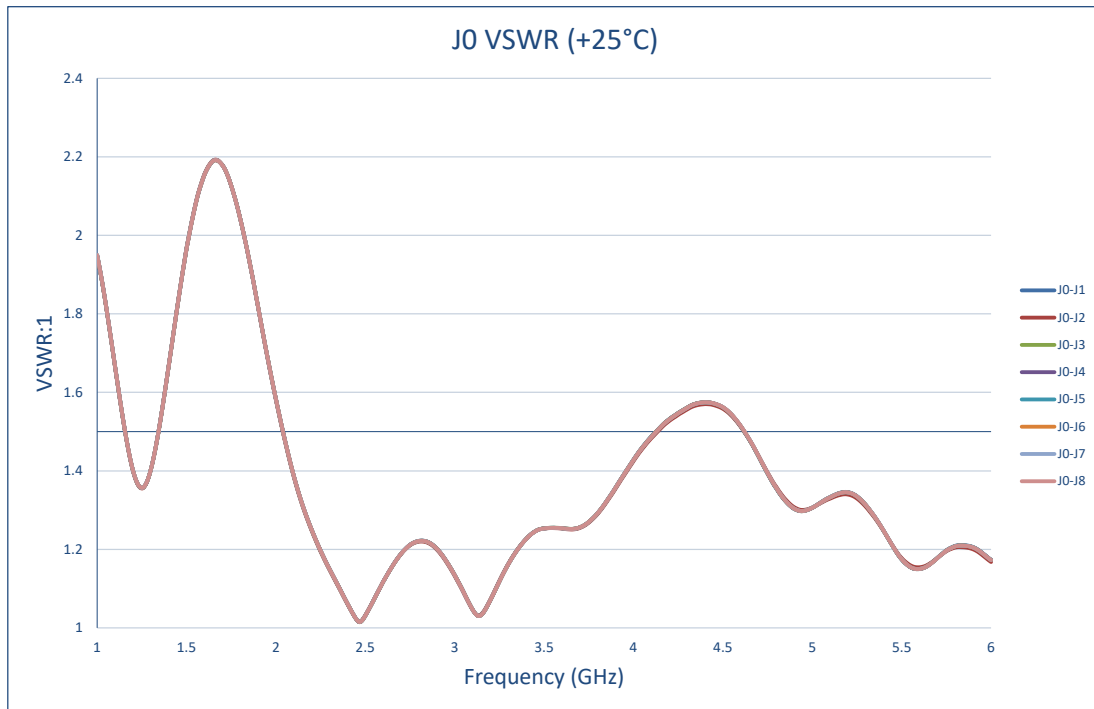
PRODUCT SPECIFICATIONS

TEST ITEM NO.	PARAMETERS	SPECIFIED VALUE	TEST RESULTS		
			-55°C	+25°C	+85°C
1	Frequency Range	1 GHz – 6GHz	1 GHz – 6GHz		
2	Insertion Loss	1 TO 6 GHz - ± 2.0 dB MAX 2 TO 6 GHz - ± 2.5 dB MAX	1.47 dB See Graph	1.53 dB See Graph	1.6 dB See Graph
3	VSWR	INPUT: 1 TO 2 GHz - 2.6:1 MAX 2 TO 6 GHz - 2.1:1 MAX	2.23:1 See Graph	2.19:1 See Graph	2.16:1 See Graph
		OUTPUT: 1 TO 2 GHz - 1.5:1 MAX 2 TO 6 GHz - 1.7:1 MAX	1.44:1 See Graph	1.43:1 See Graph	1.44:1 See Graph
4	Isolation	1 TO 2 GHz - 10 dB TYP 2 TO 6 GHz - 20 dB TYP	11 dB See Graph	11 dB See Graph	11 dB See Graph
5	Amplitude Balance	1 TO 2 GHz - ± 0.5 dB MAX 2 TO 6 GHz - ± 0.3 dB MAX	0.12 dB MAX See Graph	0.11 dB MAX See Graph	0.11 dB MAX See Graph
			-0.12 dB MIN See Graph	-0.11 dB MIN See Graph	-0.11 dB MIN See Graph
6	Phase Balance	1 TO 2 GHz - 3° MAX 2 TO 6 GHz - 4° MAX	1.02° MAX See Graph	1.04° MAX See Graph	1.37° MAX See Graph
			-1.02° MIN See Graph	-1.04° MIN See Graph	-1.37° MIN See Graph
7	Power Handling	Forward: 40 W MAX Reversed: 1 W MAX	Forward: 40 W Reversed: 1 W See Graph	Forward: 40 W Reversed: 1 W See Graph	Forward: 40 W Reversed: 1 W See Graph
8	Insertion Loss Flatness (Ref Line of Best Fit)	1 TO 6 GHz - ± 1 dB MAX	+0.19 dB MAX -0.71 dB MAX	+0.21 dB MAX -0.7 dB MAX	+0.19 dB MAX -0.73 dB MAX

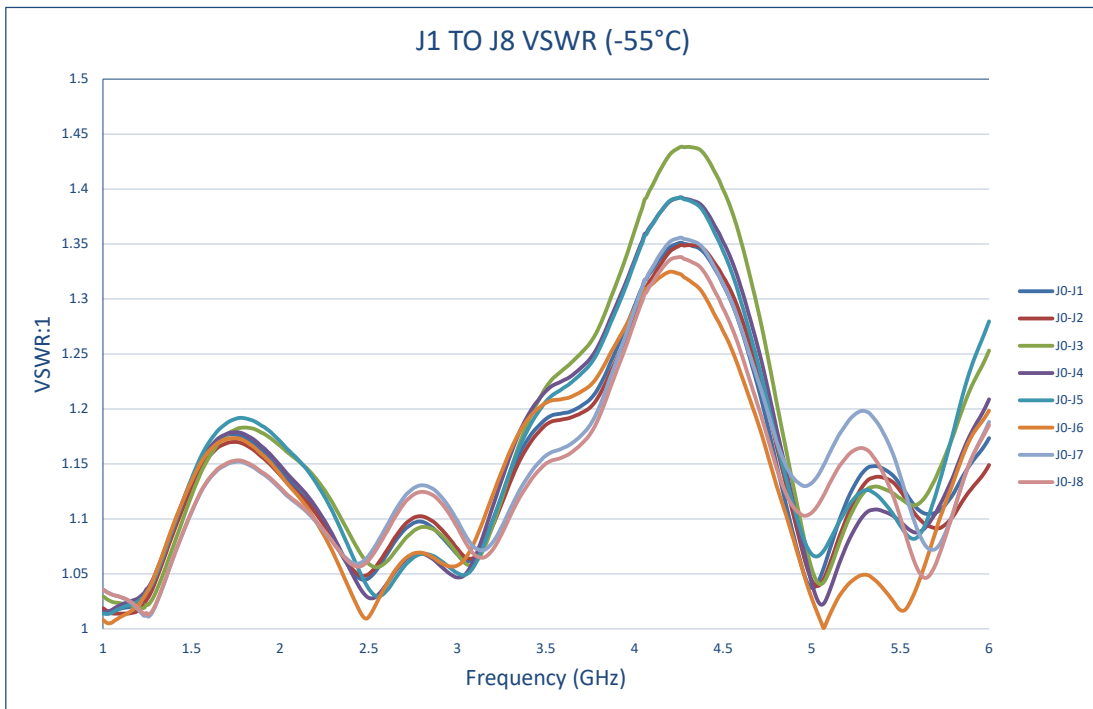
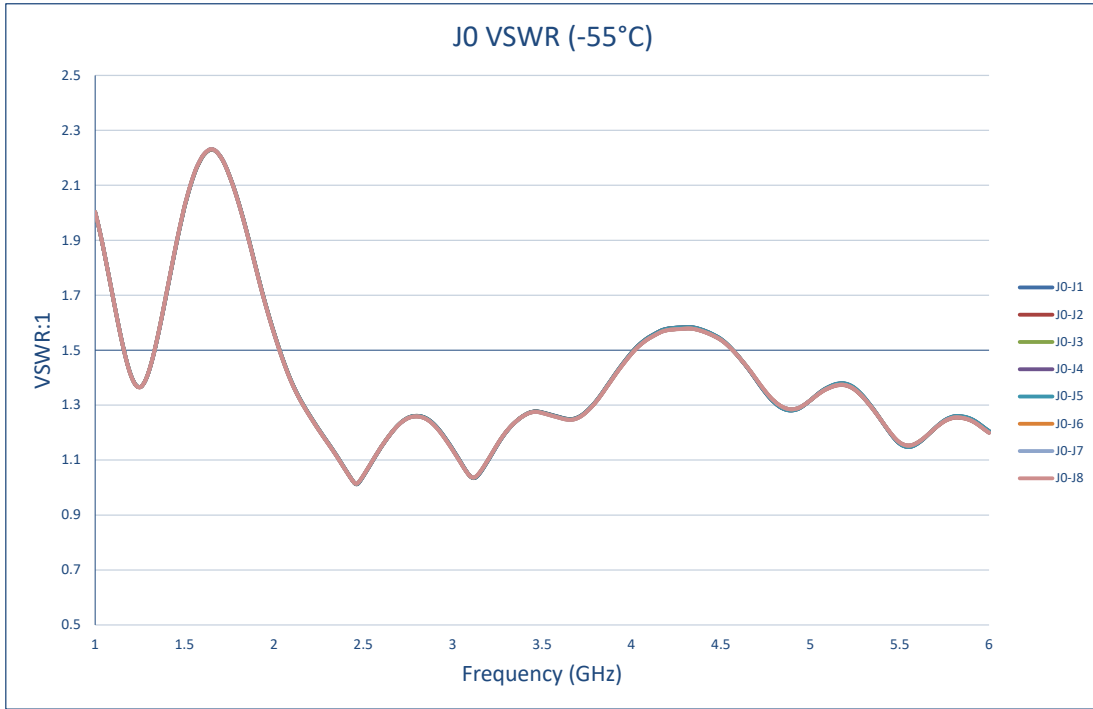
TYPICAL CHARACTERISTICS
ON
APD-8-1G6G-292FF-SPACE



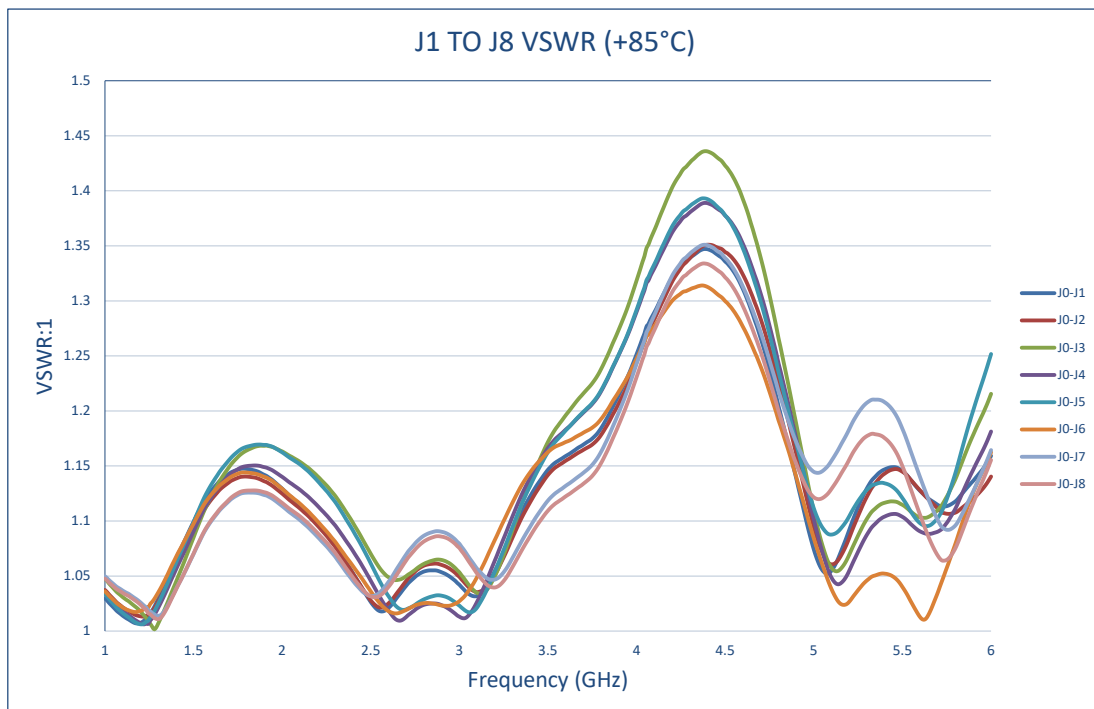
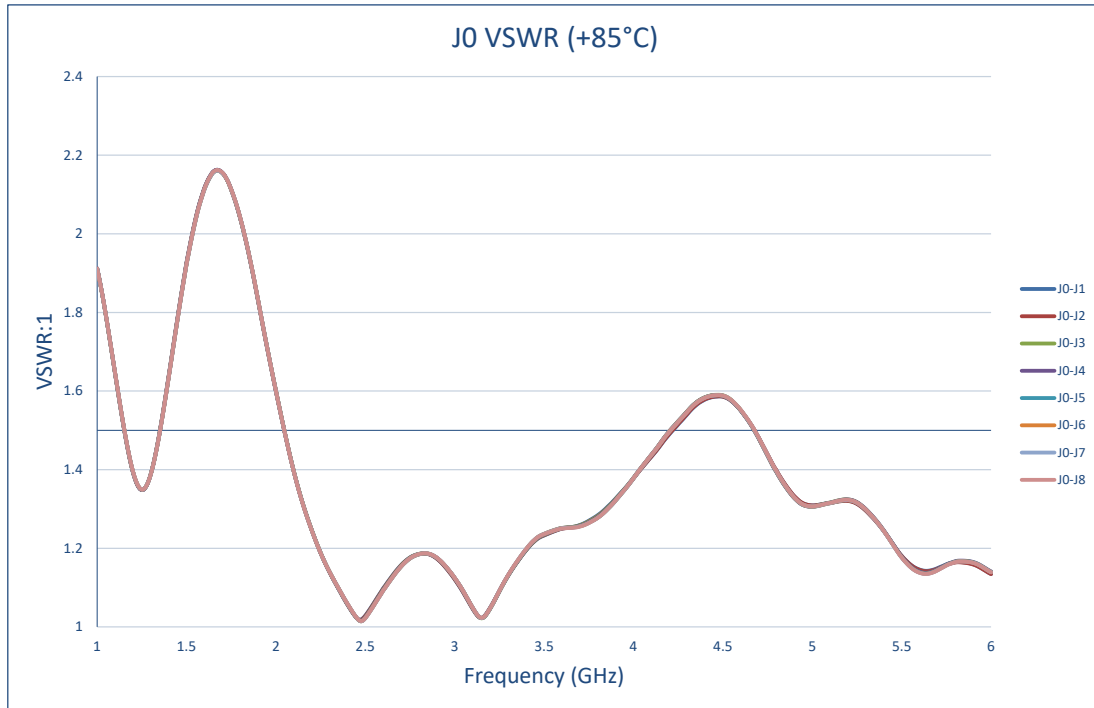
TYPICAL CHARACTERISTICS
ON
APD-8-1G6G-292FF-SPACE



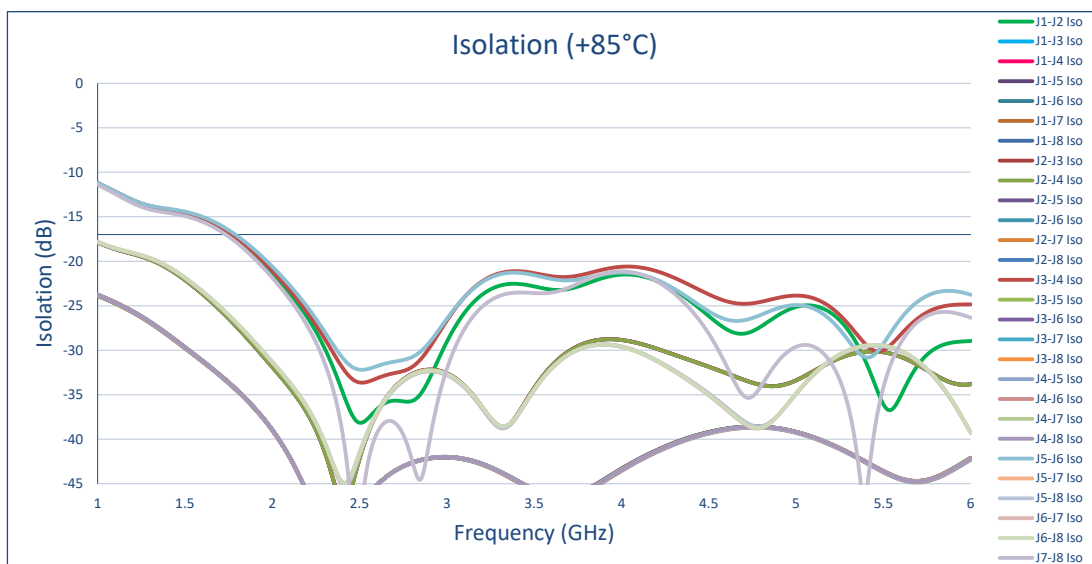
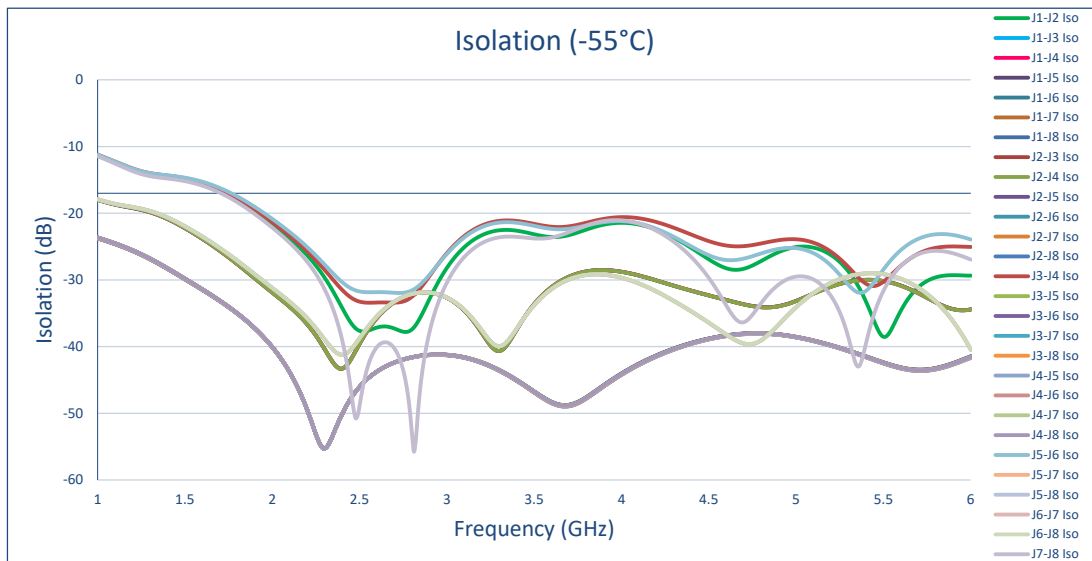
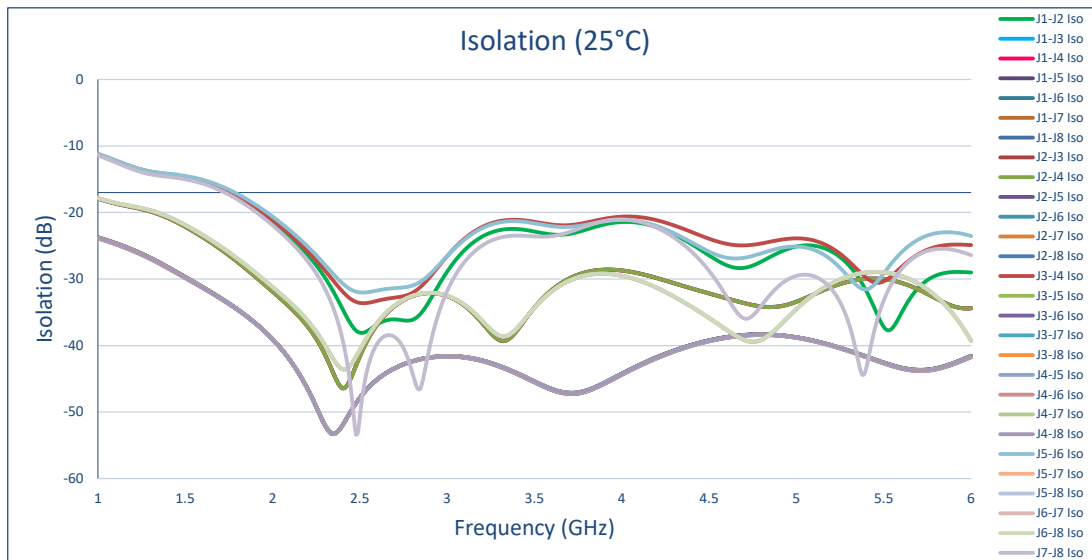
TYPICAL CHARACTERISTICS
ON
APD-8-1G6G-292FF-SPACE



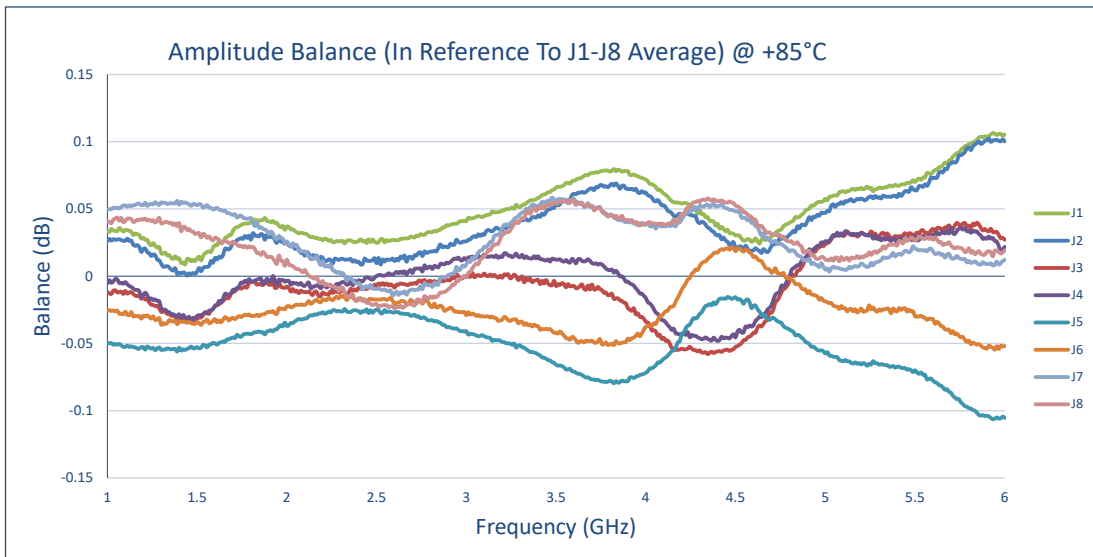
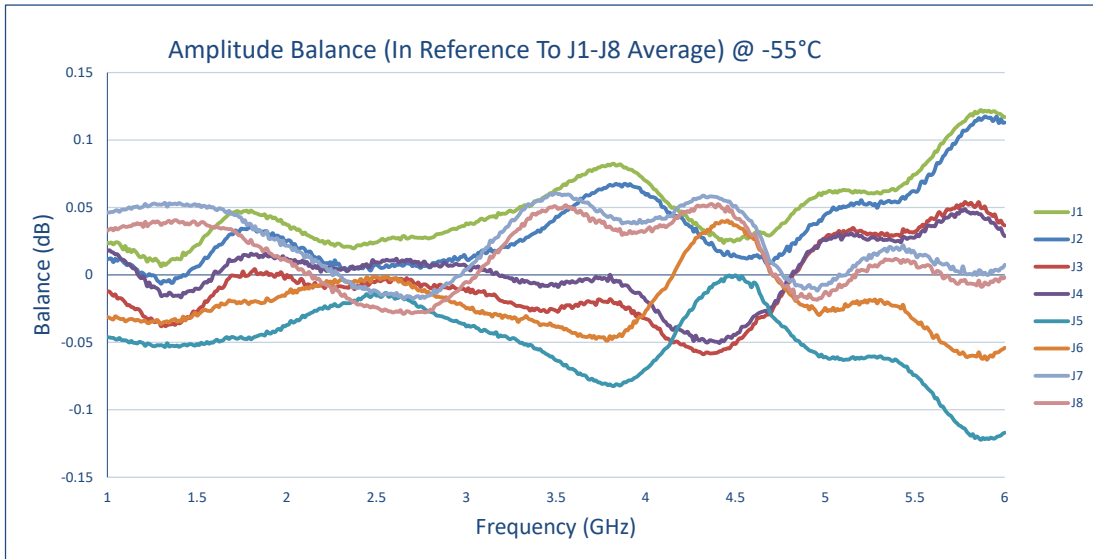
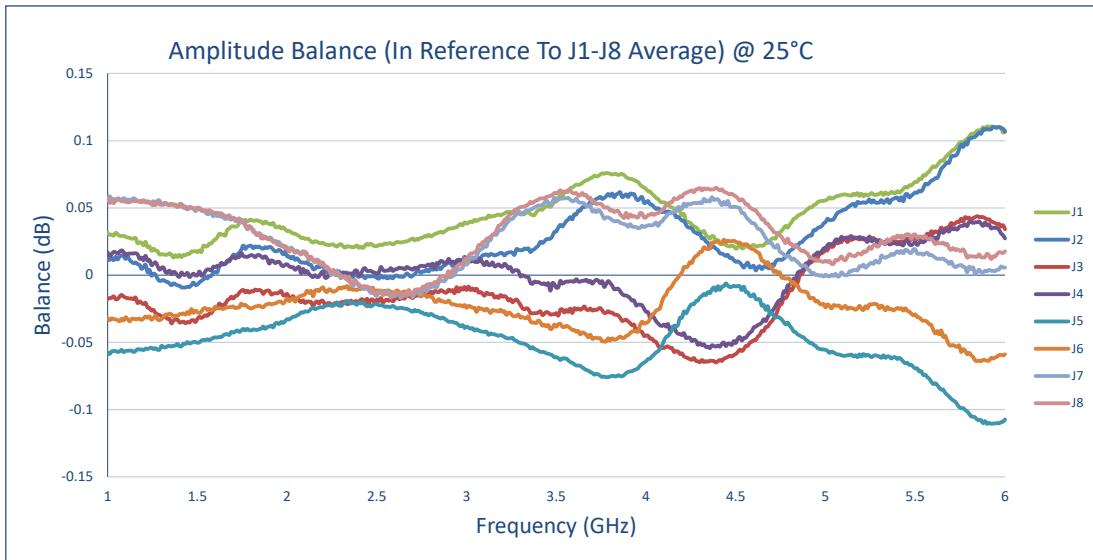
TYPICAL CHARACTERISTICS
ON
APD-8-1G6G-292FF-SPACE



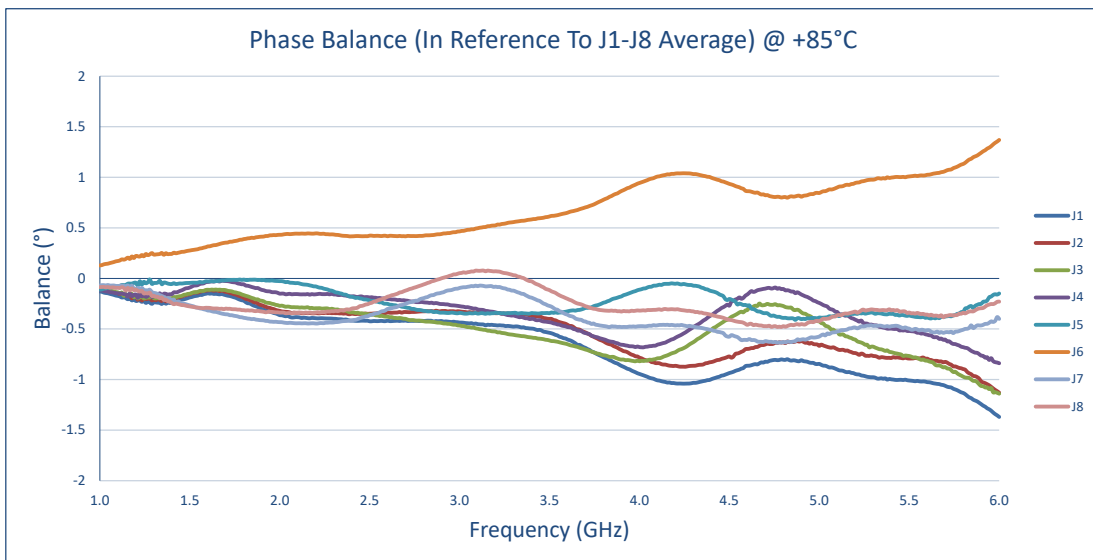
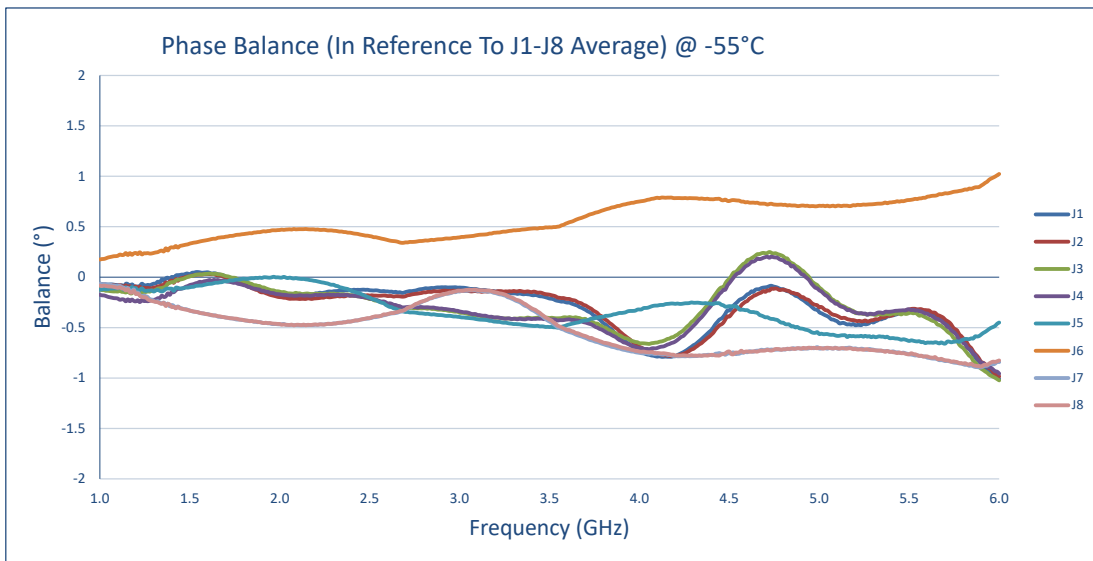
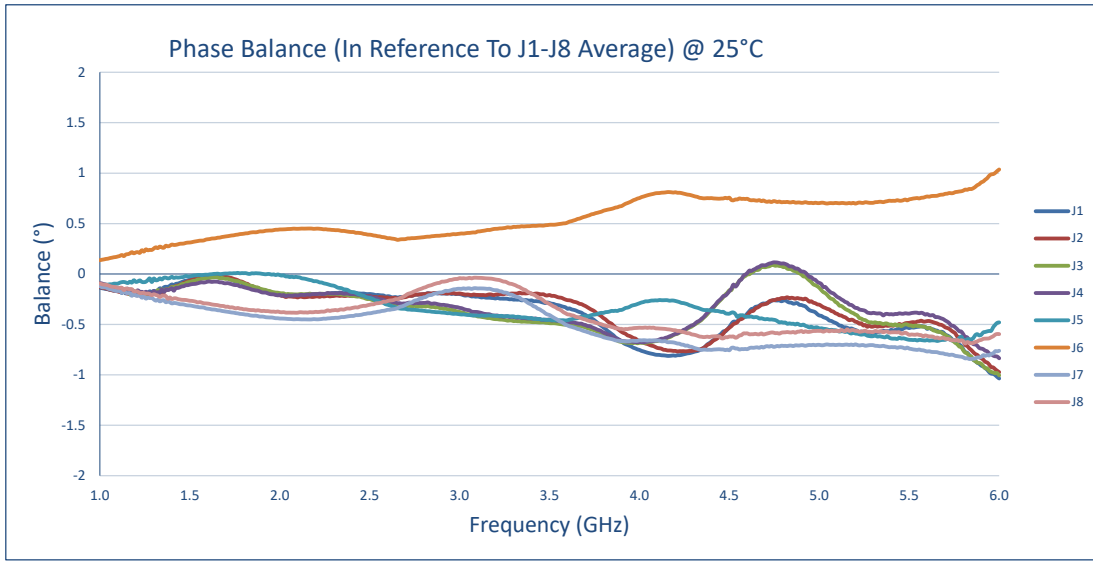
TYPICAL CHARACTERISTICS
ON
APD-8-1G6G-292FF-SPACE



TYPICAL CHARACTERISTICS
ON
APD-8-1G6G-292FF-SPACE



TYPICAL CHARACTERISTICS
ON
APD-8-1G6G-292FF-SPACE



TYPICAL CHARACTERISTICS
ON
APD-8-1G6G-292FF-SPACE

