



SUMMARY TEST DATA ON APD-16-218-292FF

Customer: DEMO-PMI
 SO No: _____
 Model No: APD-16-218-292FF
 Serial No: DEMO-PMI-1

Tested By: SEAN HERATY
 Temperature: +25 °C
 Date: 10/20/2020
 Drawing No: 27639020 Rev: A1

TEST ITEM NO.	PARAMETERS	SPECIFIED VALUE	TEST RESULTS	QA QC
1	Frequency Range	2.0 GHz – 18 GHz	2.0 GHz – 18 GHz	
2	Insertion Loss (Over Theoretical Power Split of 12 dB)	2 to 8 GHz	3.0 dB Typ.	2.46 dB
		8 to 18 GHz	5.0 dB Typ.	4.54 dB
				See Graphs
3	Insertion Loss Flatness (Ref Line of Best Fit)	2 to 8 GHz	± 1.2 dB Typ.	0.89 dB
		8 to 18 GHz	± 1.0 dB Typ.	0.8 dB
				See Graphs
4	Isolation	2 to 8 GHz	20 dB Typ.	16.31 dB
		8 to 18 GHz	20 dB Typ.	16.11 dB
				See Graphs
5	VSWR Input	2 to 8 GHz	3.0:1 Typ.	2.35 :1
		8 to 18 GHz	2.1:1 Typ.	2.02 :1
				See Graphs
6	VSWR Output	2 to 8 GHz	1.8:1 Typ.	1.71 :1
		8 to 18 GHz	2.0:1 Typ.	1.73 :1
				See Graphs
7	Amplitude Balance	2 to 8 GHz	± 0.5 dB Max.	0.35 dB (±)
		8 to 18 GHz	± 1.3 dB Max.	0.95 dB (±)
				See Graphs
8	Phase Balance	2 to 8 GHz	± 10° Typ.	+7.71 °/-4.85 °
		8 to 18 GHz	± 20° Typ.	+16.88 °/-10.81 °
				See Graphs
9	Average Power	25 Watts (+44dBm) (Into 1.2:1 Load VSWR)	Pass 25 Watts See Graph	

Note: Amplitude and phase balance are relative to J2 Port.

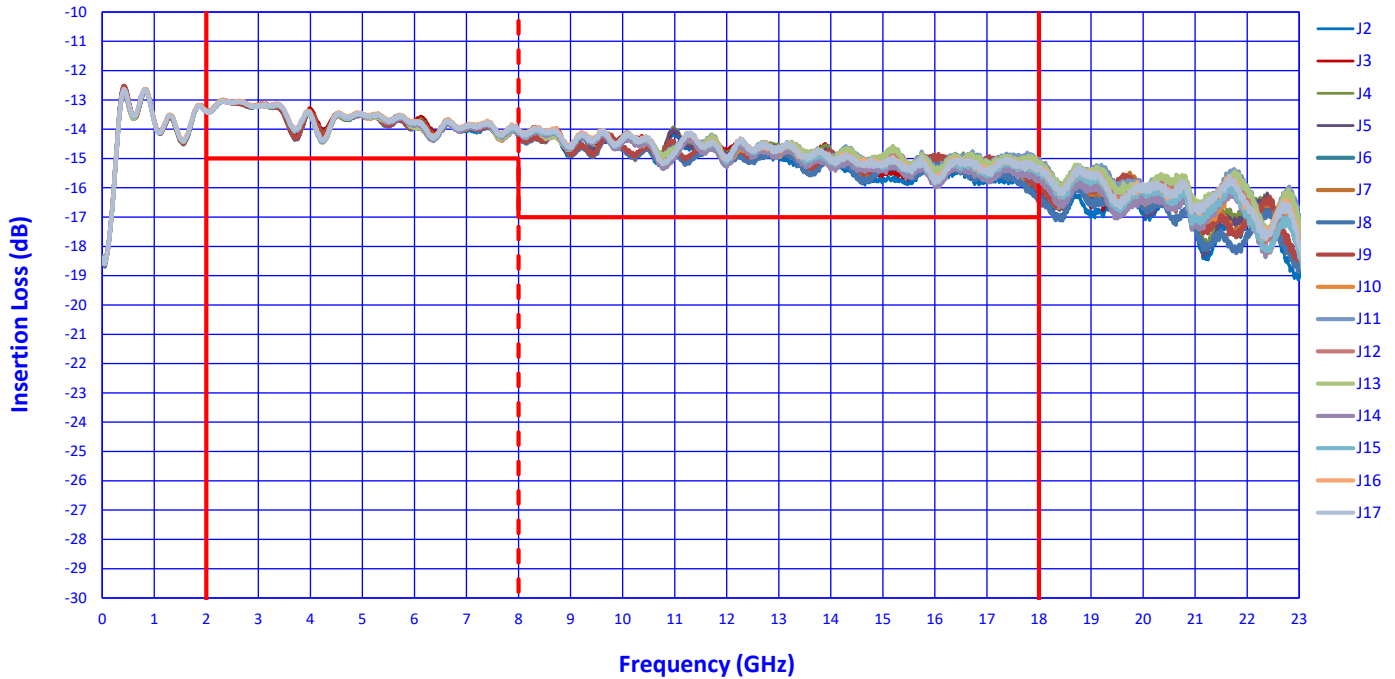
QA/QC APPROVAL: _____

DATE: _____

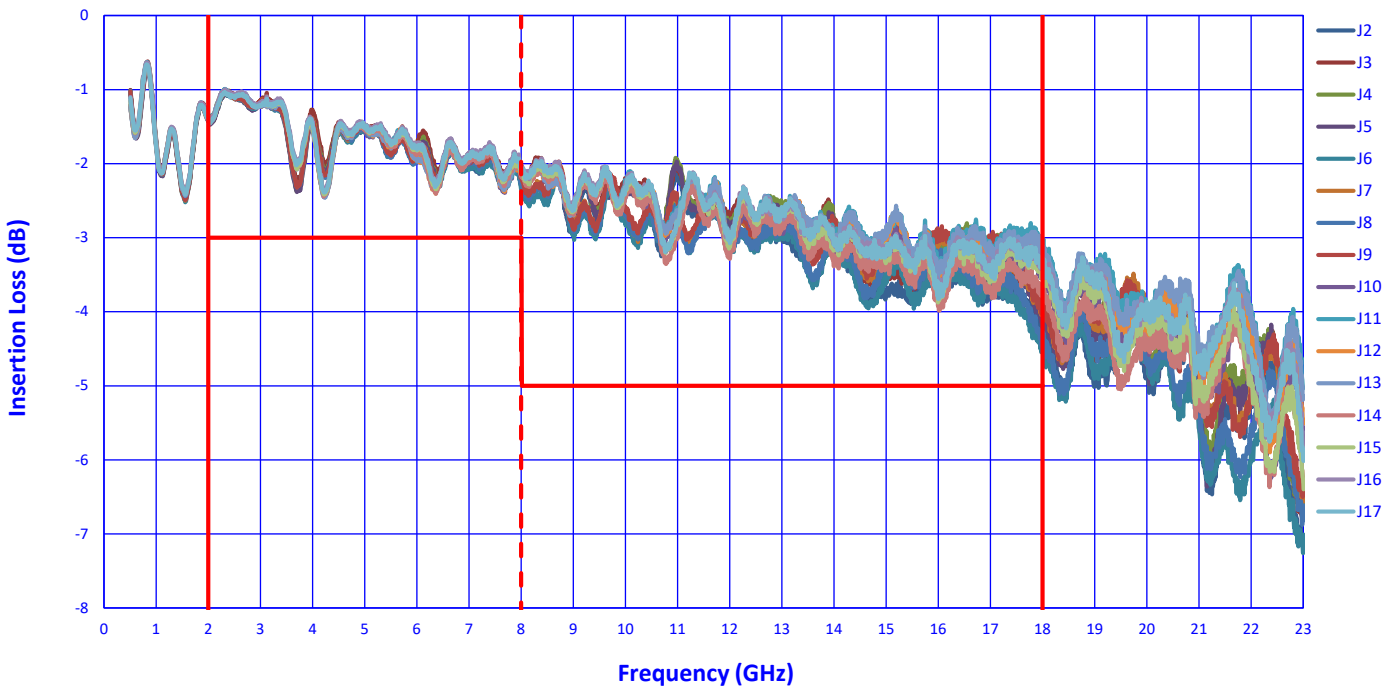


SUMMARY TEST DATA ON APD-16-218-292FF

Absolute Insertion Loss (+25°C)

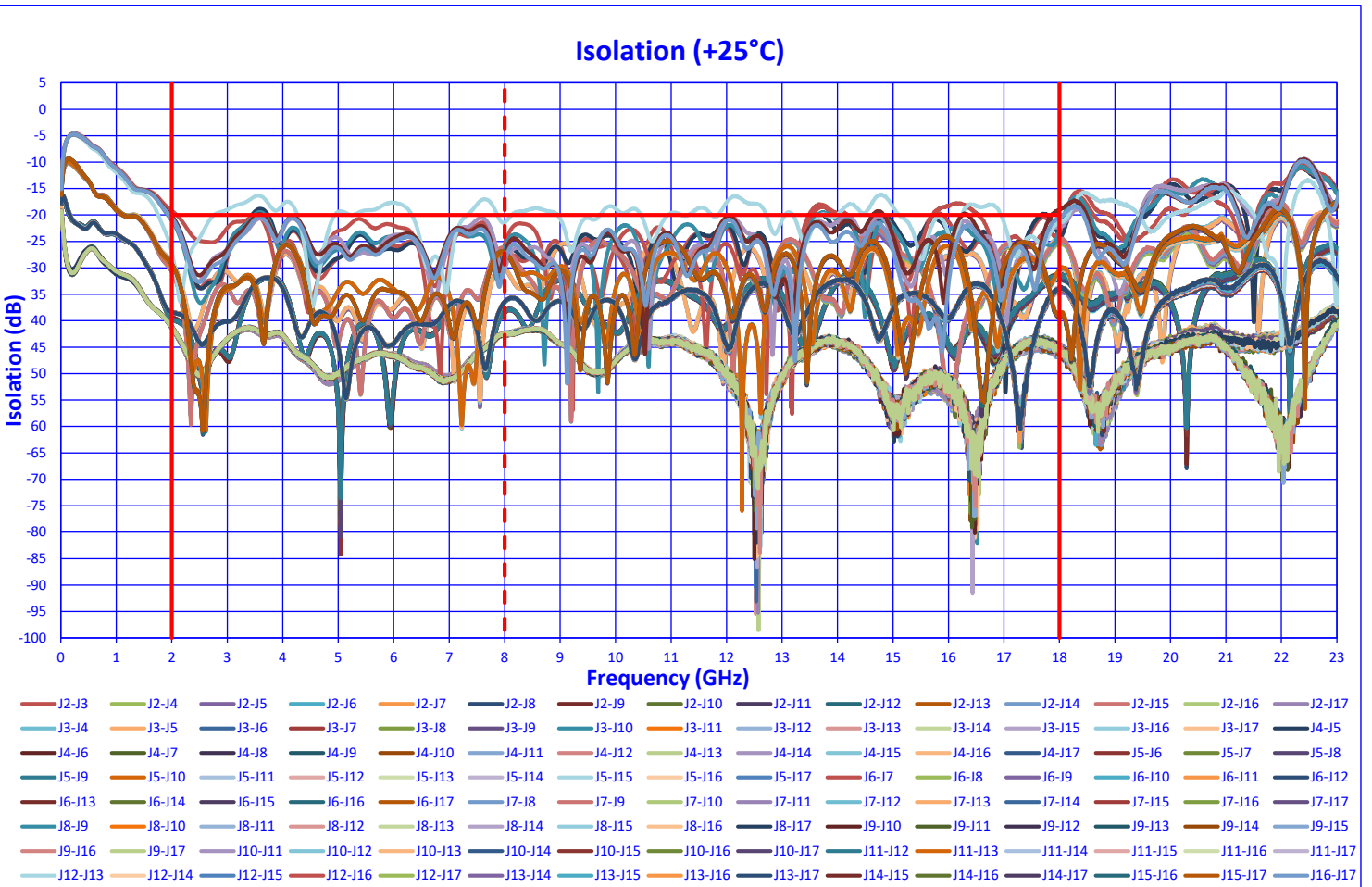
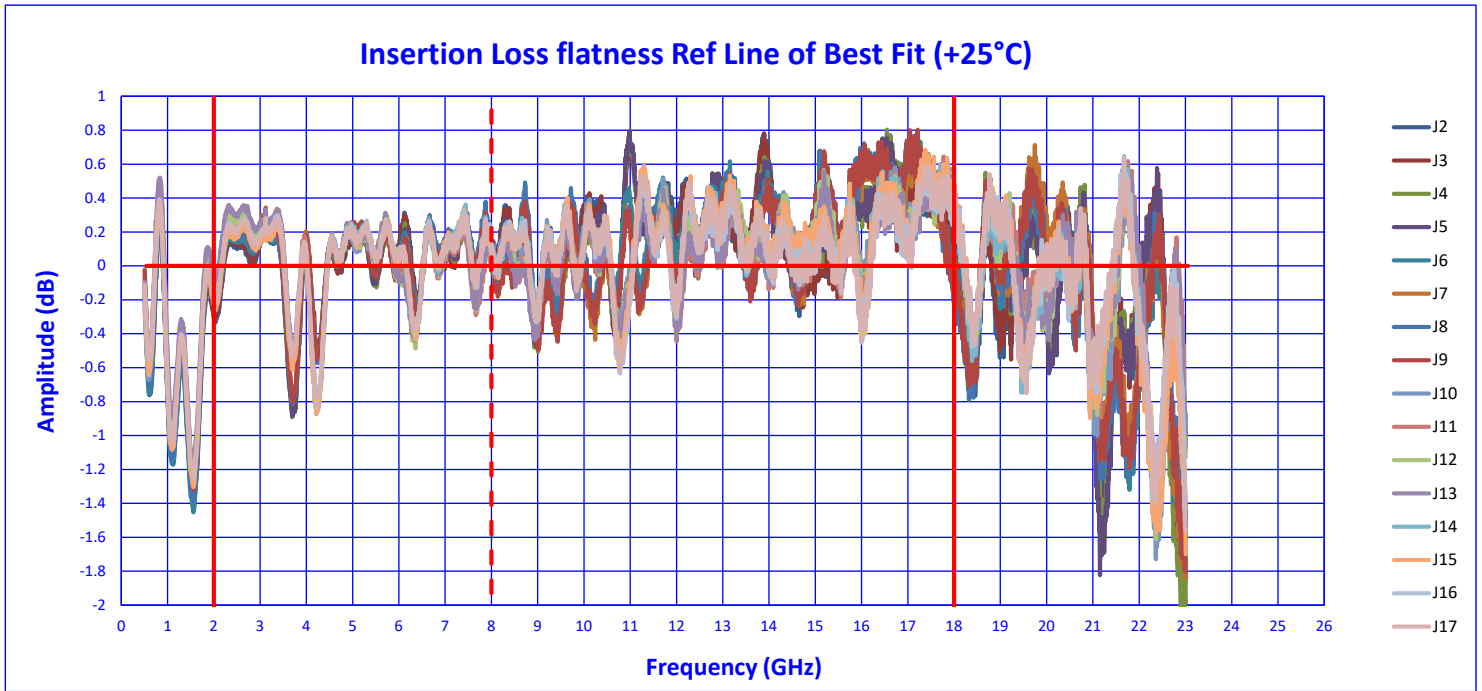


Insertion Loss over Theoretical Power Split of 12 dB (+25°C)





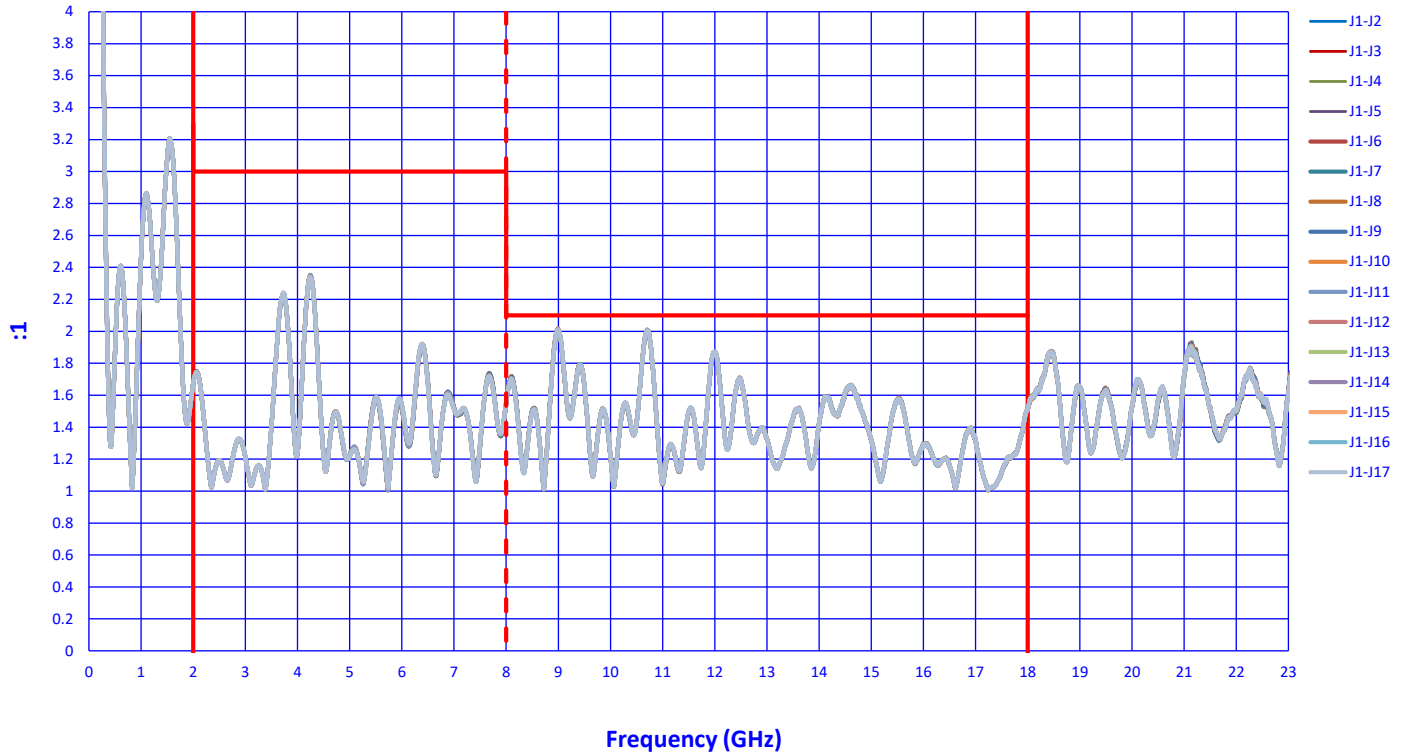
SUMMARY TEST DATA ON APD-16-218-292FF



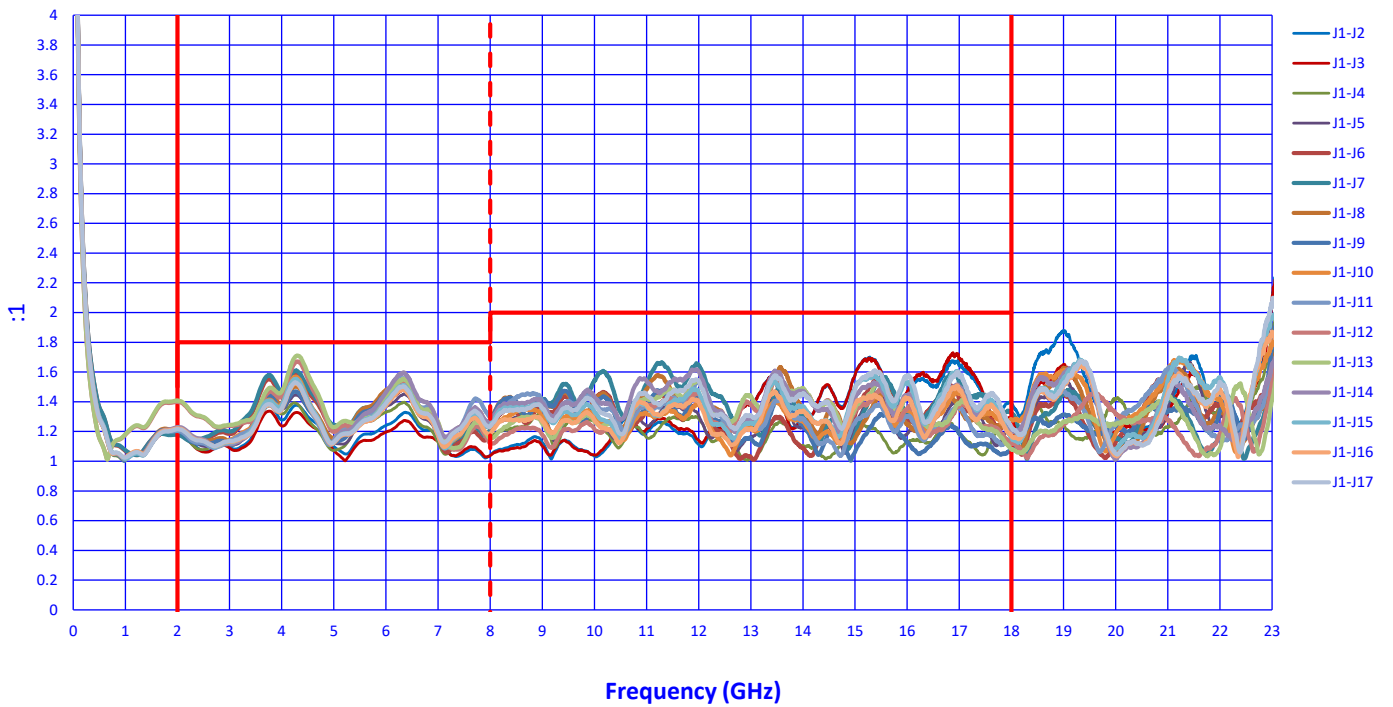


SUMMARY TEST DATA ON APD-16-218-292FF

VSWR IN (+25°C)



VSWR OUT (+25°C)





SUMMARY TEST DATA ON APD-16-218-292FF

