



# SUMMARY TEST DATA ON APD-16-0R518-292FF

Customer: DEMO-PMI  
 SO No: \_\_\_\_\_  
 Model No: APD-16-0R518-292FF  
 Serial No: DEMO-PMI-2

Tested By: SEAN HERATY  
 Temperature: +25 °C  
 Date: 11/3/2020  
 Drawing No: 27639020 Rev: A1

TEST ITEM NO.	PARAMETERS	SPECIFIED VALUE	TEST RESULTS	QA QC
1	Frequency Range	0.5 GHz – 23 GHz	0.5 GHz – 23 GHz	
2	Insertion Loss (Over Theoretical Power Split of 12 dB)	0.5 to 1 GHz	2.0 dB Typ.	1.86 dB
		1 to 2 GHz	3.0 dB Typ.	2.82 dB
		2 to 8 GHz	3.0 dB Typ.	2.9 dB
		8 to 18 GHz	5.0 dB Typ.	4.92 dB
			See Graphs	
3	Insertion Loss Flatness (Ref Line of Best Fit)	0.5 to 1 GHz	± 1.0 dB Typ.	0.7 dB
		1 to 2 GHz	± 1.5 dB Typ.	1.1 dB
		2 to 8 GHz	± 1.2 dB Typ.	1.17 dB
		8 to 18 GHz	± 1.0 dB Typ.	0.95 dB
			See Graphs	
4	Isolation	0.5 to 1 GHz	10 dB Typ.	6.63 dB
		1 to 2 GHz	10 dB Typ.	11.07 dB
		2 to 8 GHz	20 dB Typ.	18.69 dB
		8 to 18 GHz	20 dB Typ.	18.44 dB
			See Graphs	
5	VSWR Input	0.5 to 1 GHz	2.5:1 Typ.	2.42 :1
		1 to 2 GHz	3.1:1 Typ.	2.88 :1
		2 to 8 GHz	3.0:1 Typ.	2.8 :1
		8 to 18 GHz	2.1:1 Typ.	2.01 :1
			See Graphs	
6	VSWR Output	0.5 to 1 GHz	1.5:1 Max.	1.29 :1
		1 to 2 GHz	1.5:1 Max.	1.23 :1
		2 to 8 GHz	1.8:1 Max.	1.53 :1
		8 to 18 GHz	2.0:1 Max.	1.72 :1
			See Graphs	
7	Amplitude Balance	0.5 to 1 GHz	± 0.5 dB Max.	0.13 dB (±)
		1 to 2 GHz	± 0.5 dB Max.	0.11 dB (±)
		2 to 8 GHz	± 0.5 dB Max.	0.46 dB (±)
		8 to 18 GHz	± 1.3 dB Max.	1.23 dB (±)
			See Graphs	
8	Phase Balance	0.5 to 1 GHz	± 3° Typ.	+1.04 °/-1.11 °
		1 to 2 GHz	± 3° Typ.	+1.09 °/-0.74 °
		2 to 8 GHz	± 10° Typ.	+6.31 °/-3.35 °
		8 to 18 GHz	± 20° Typ.	+11.1 °/-7.18 °
			See Graphs	
9	Average Power	25 Watts (+44dBm) (Into 1.2:1 Load VSWR)	Pass 25 Watts See Graph	

Note: Amplitude and phase balance are relative to J2 Port.

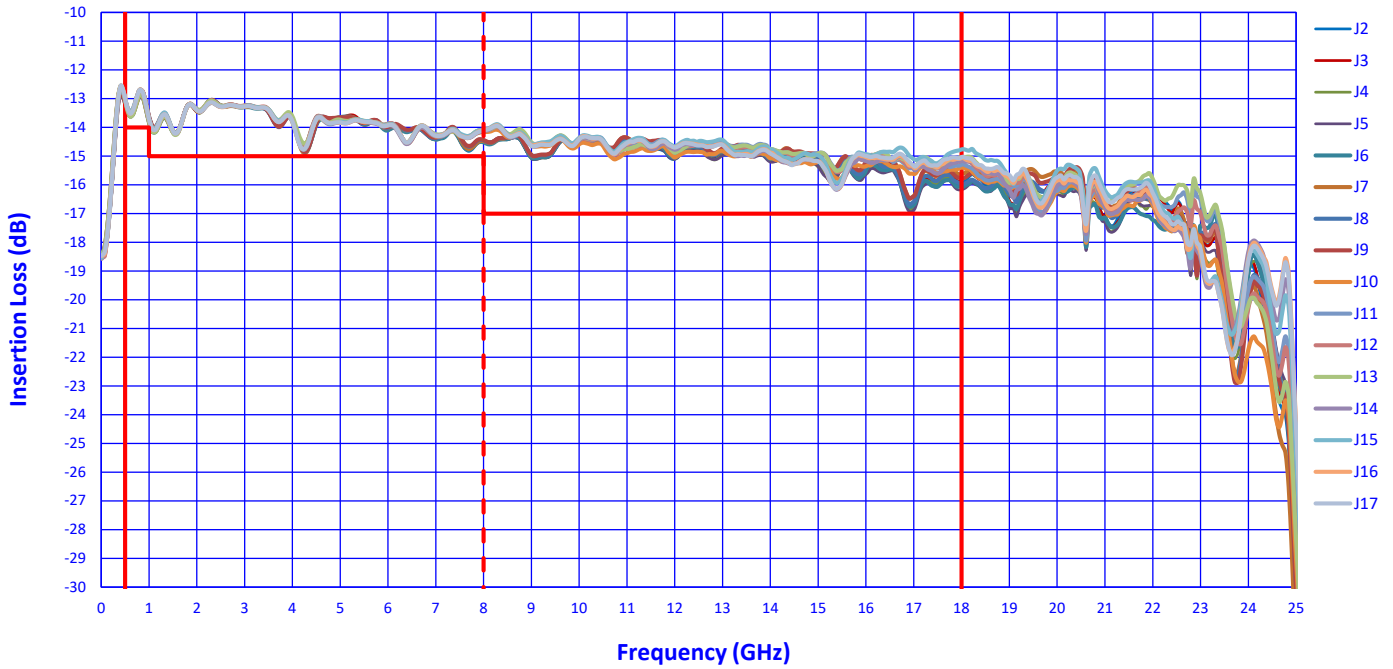
QA/QC APPROVAL: \_\_\_\_\_

DATE: \_\_\_\_\_

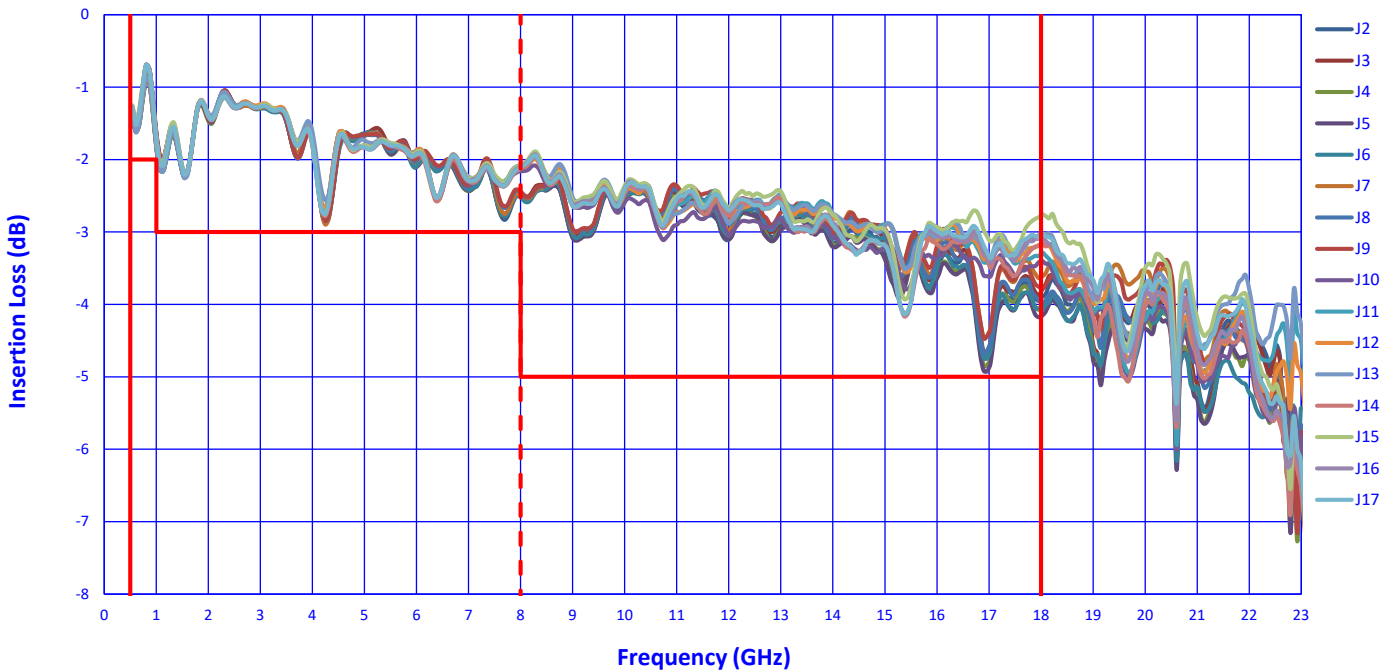


# SUMMARY TEST DATA ON APD-16-0R518-292FF

### Absolute Insertion Loss (+25°C)



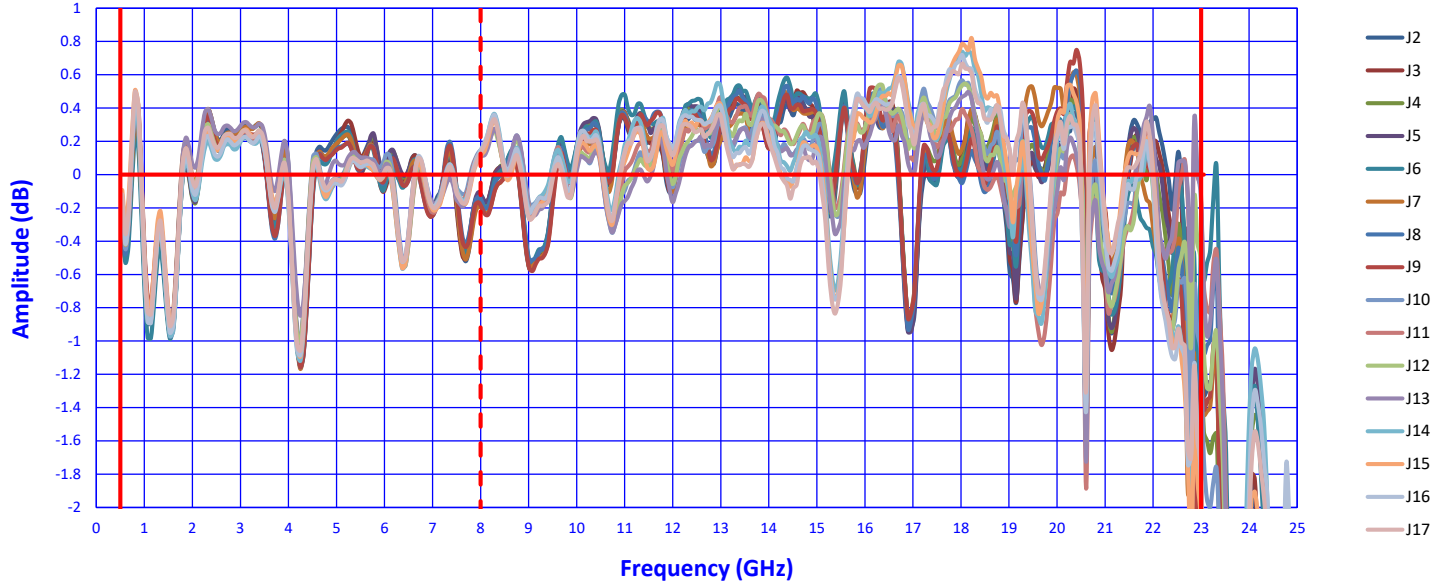
### Insertion Loss over Theoretical Power Split of 12 dB (+25°C)



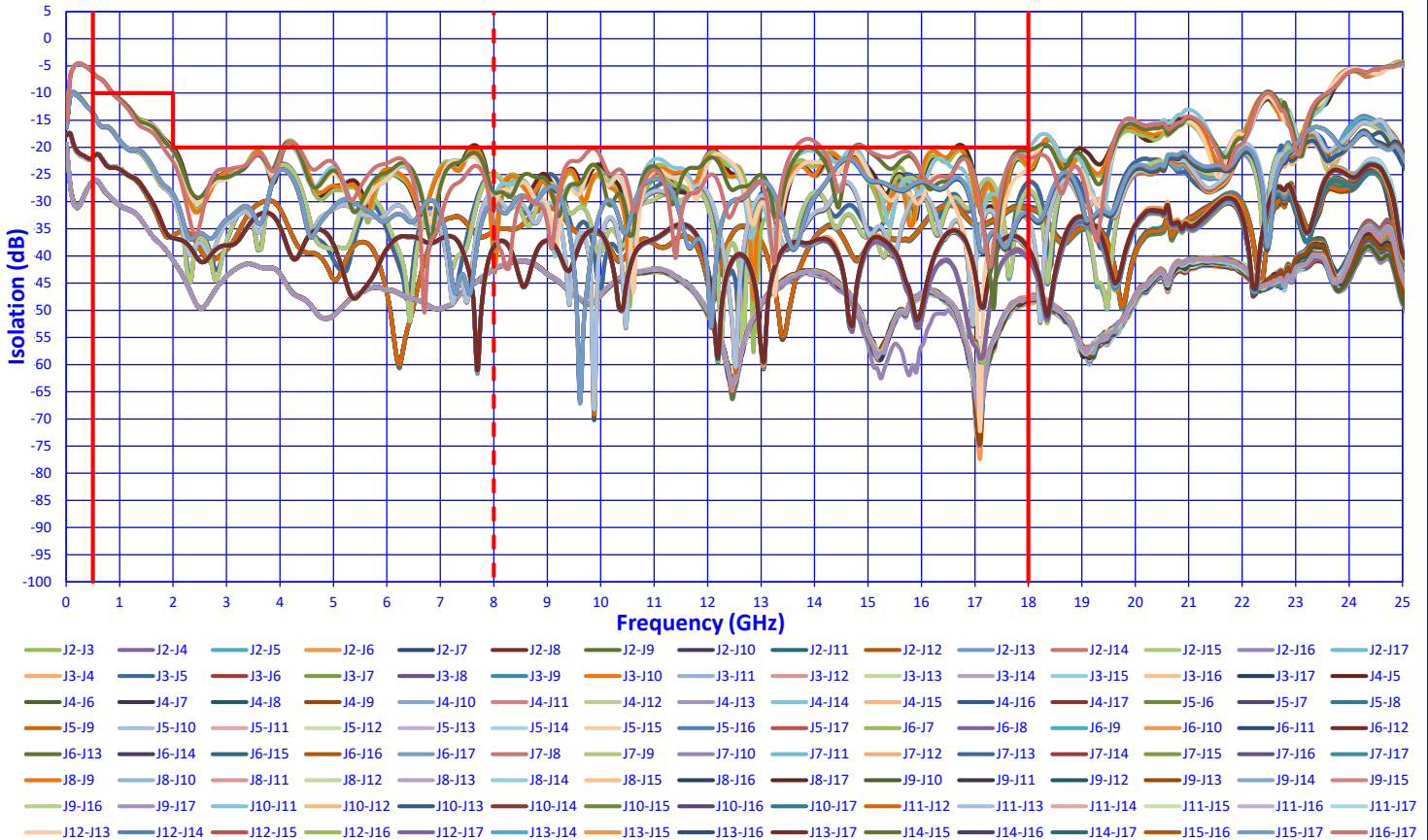


# SUMMARY TEST DATA ON APD-16-0R518-292FF

### Insertion Loss flatness Ref Line of Best Fit (+25°C)



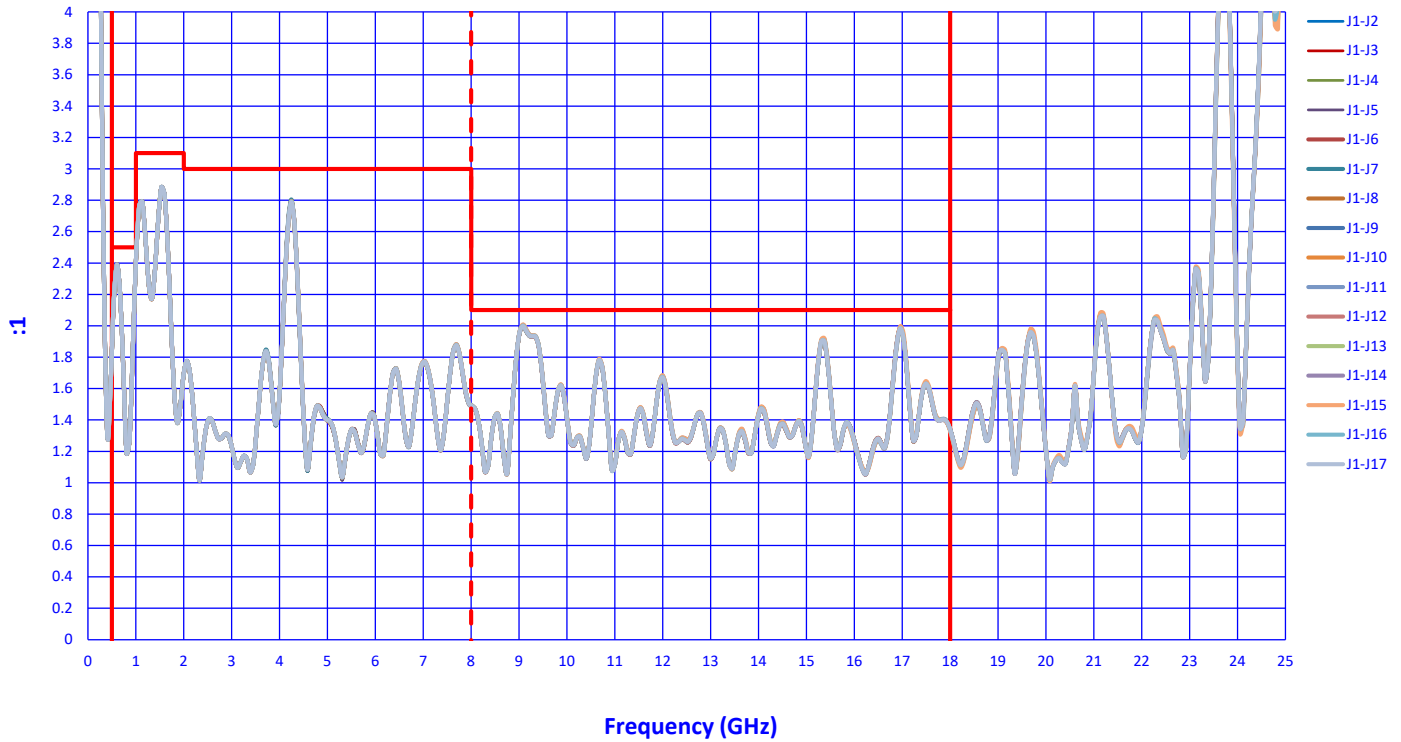
### Isolation (+25°C)



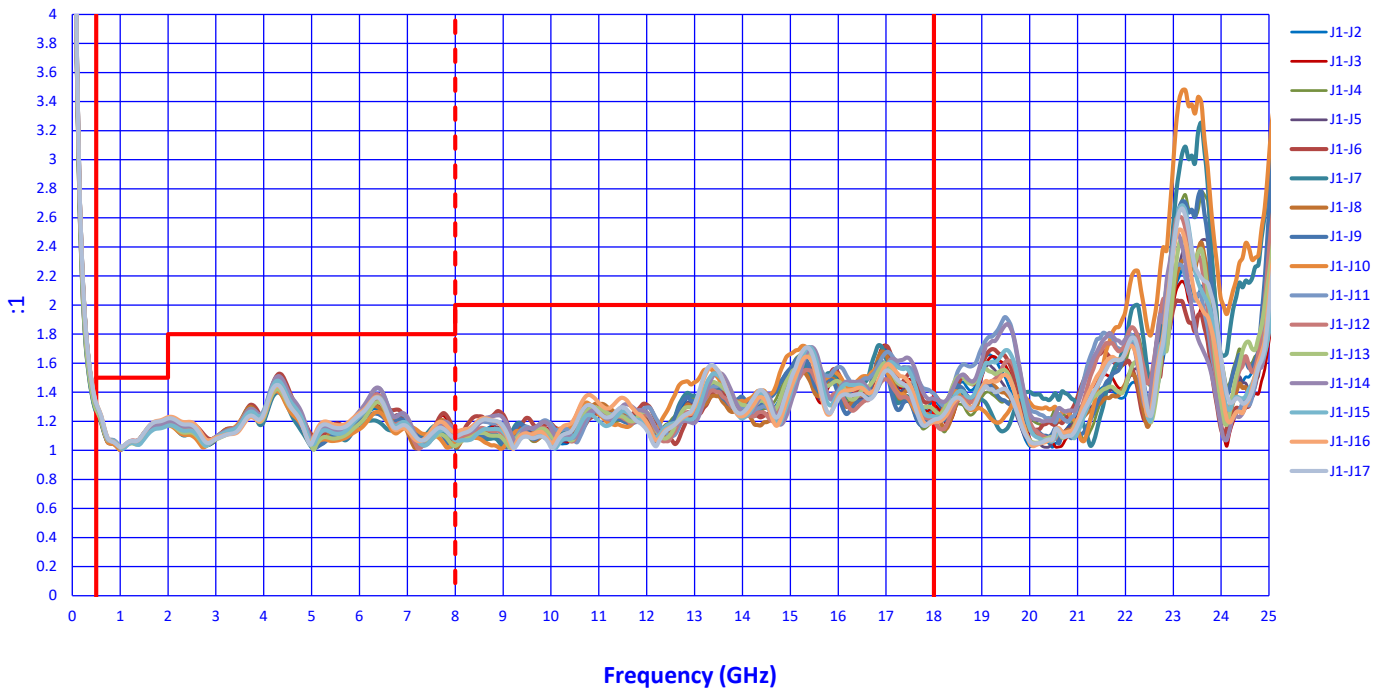


# SUMMARY TEST DATA ON APD-16-0R518-292FF

### VSWR IN (+25°C)



### VSWR OUT (+25°C)





# SUMMARY TEST DATA ON APD-16-0R518-292FF

