



SUMMARY TEST DATA ON APD-16-218-292FF

Customer: DEMO-PMI
 SO No: _____
 Model No: APD-16-218-292FF
 Serial No: DEMO-PMI-2

Tested By: SEAN HERATY
 Temperature: +25 °C
 Date: 10/20/2020
 Drawing No: 27639020 Rev: A1

TEST ITEM NO.	PARAMETERS	SPECIFIED VALUE	TEST RESULTS	QA QC
1	Frequency Range	0.5 GHz – 23 GHz	0.5 GHz – 23 GHz	
2	Insertion Loss (Over Theoretical Power Split of 12 dB)	2 to 8 GHz 3.0 dB Typ.	2.9 dB	
		8 to 18 GHz 5.0 dB Typ.	4.92 dB	
			See Graphs	
3	Insertion Loss Flatness (Ref Line of Best Fit)	2 to 8 GHz ± 1.2 dB Typ.	1.17 dB	
		8 to 18 GHz ± 1.0 dB Typ.	0.95 dB	
			See Graphs	
4	Isolation	2 to 8 GHz 20 dB Typ.	18.69 dB	
		8 to 18 GHz 20 dB Typ.	18.44 dB	
			See Graphs	
5	VSWR Input	2 to 8 GHz 3.0:1 Typ.	2.8 :1	
		8 to 18 GHz 2.1:1 Typ.	2.01 :1	
			See Graphs	
6	VSWR Output	2 to 8 GHz 1.8:1 Max.	1.53 :1	
		8 to 18 GHz 2.0:1 Max.	1.72 :1	
			See Graphs	
7	Amplitude Balance	2 to 8 GHz ± 0.5 dB Max.	0.46 dB (±)	
		8 to 18 GHz ± 1.3 dB Max.	1.23 dB (±)	
			See Graphs	
8	Phase Balance	2 to 8 GHz ± 10° Typ.	+6.31 °/-3.35 °	
		8 to 18 GHz ± 20° Typ.	+11.1 °/-7.18 °	
			See Graphs	
9	Average Power	25 Watts (+44dBm) (Into 1.2:1 Load VSWR)	Pass 25 Watts See Graph	

Note: Amplitude and phase balance are relative to J2 Port.

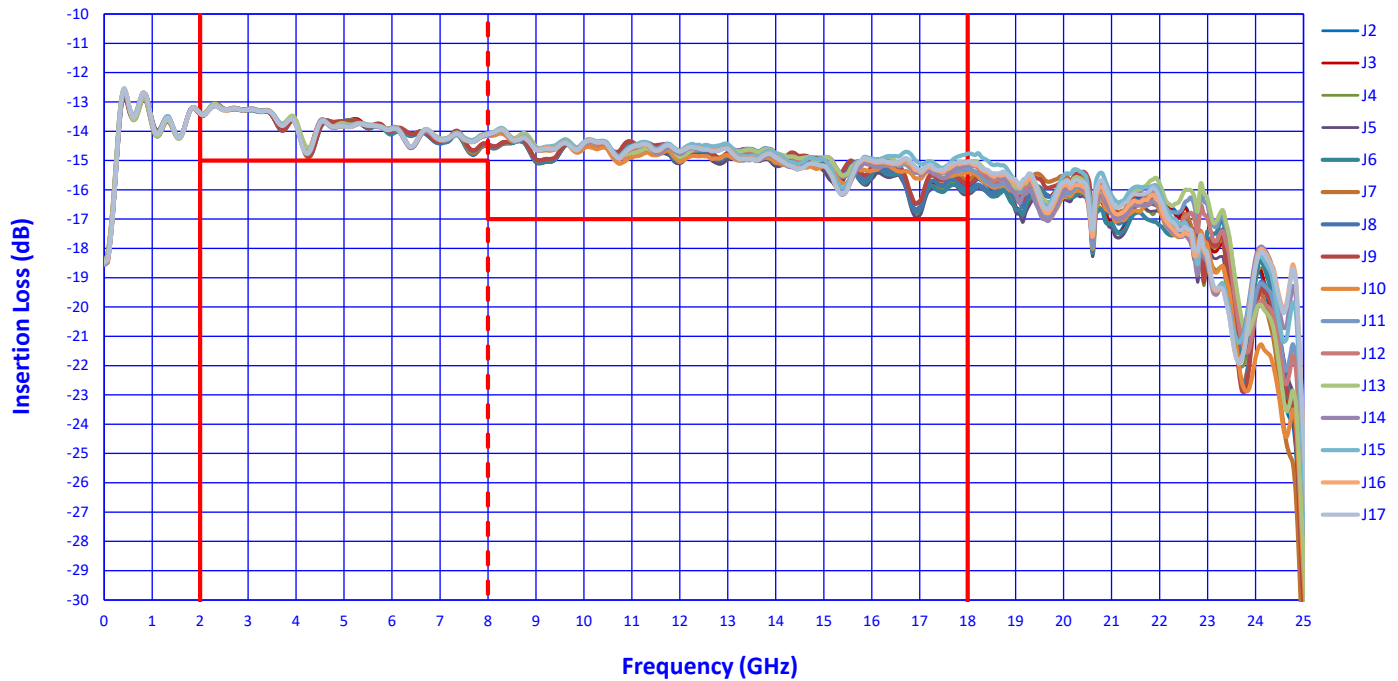
QA/QC APPROVAL: _____

DATE: _____

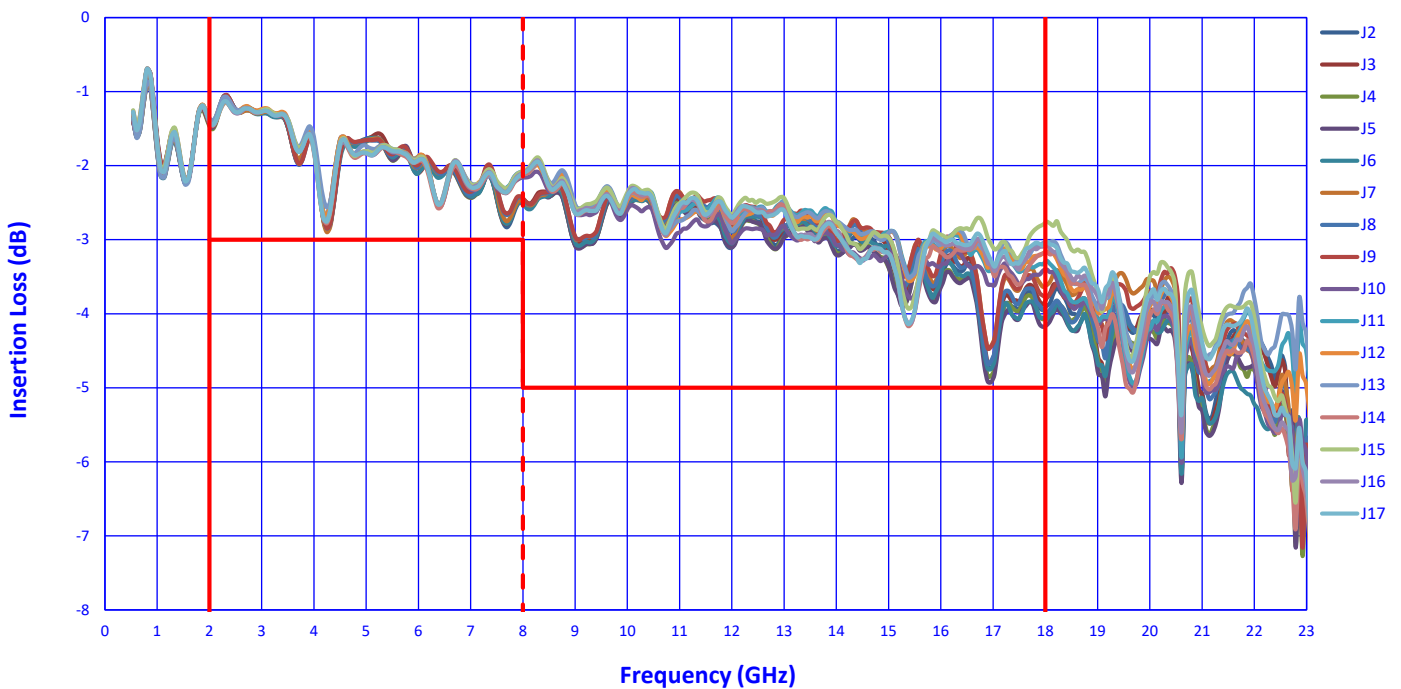


SUMMARY TEST DATA ON APD-16-218-292FF

Absolute Insertion Loss (+25°C)

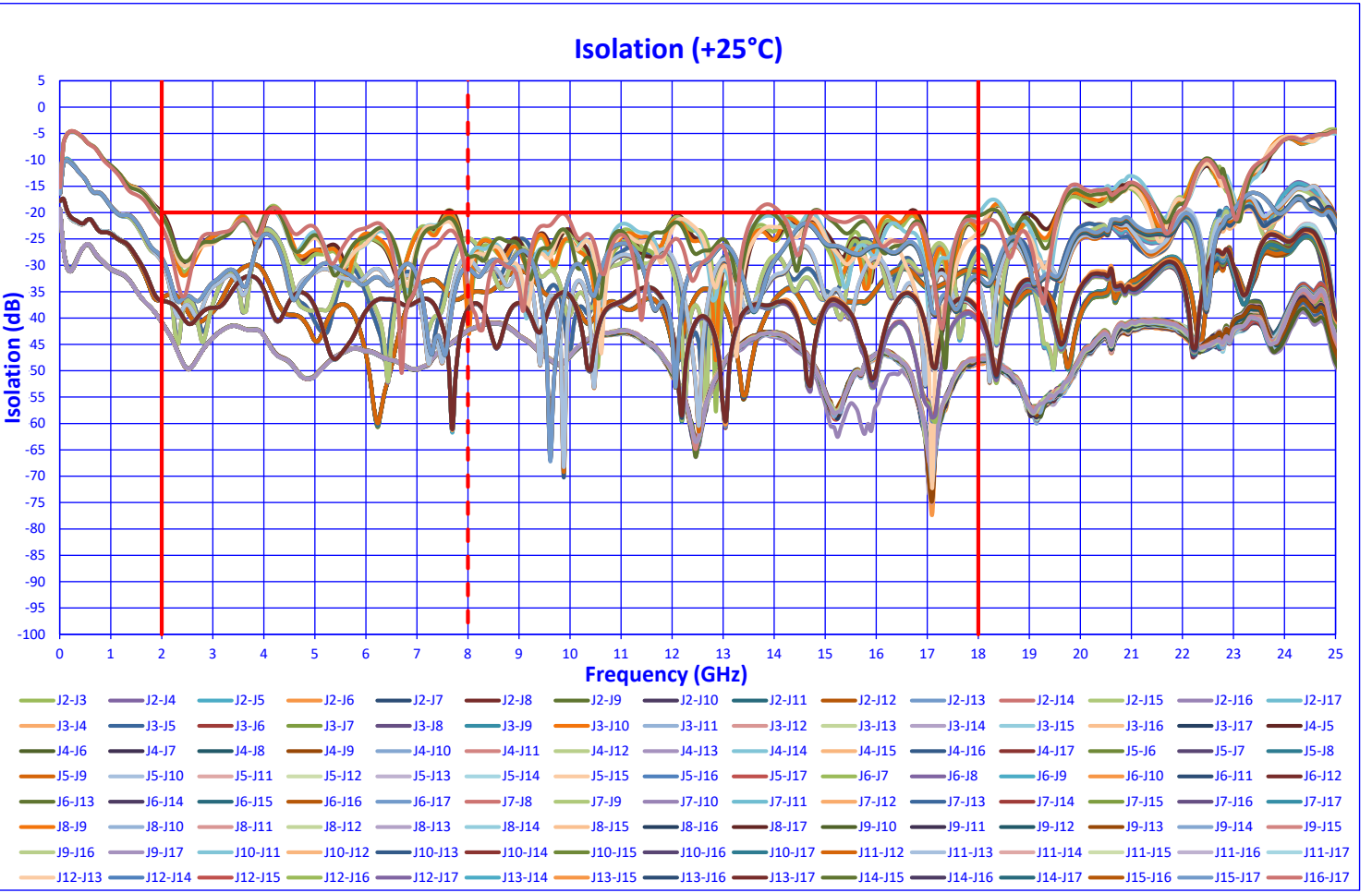
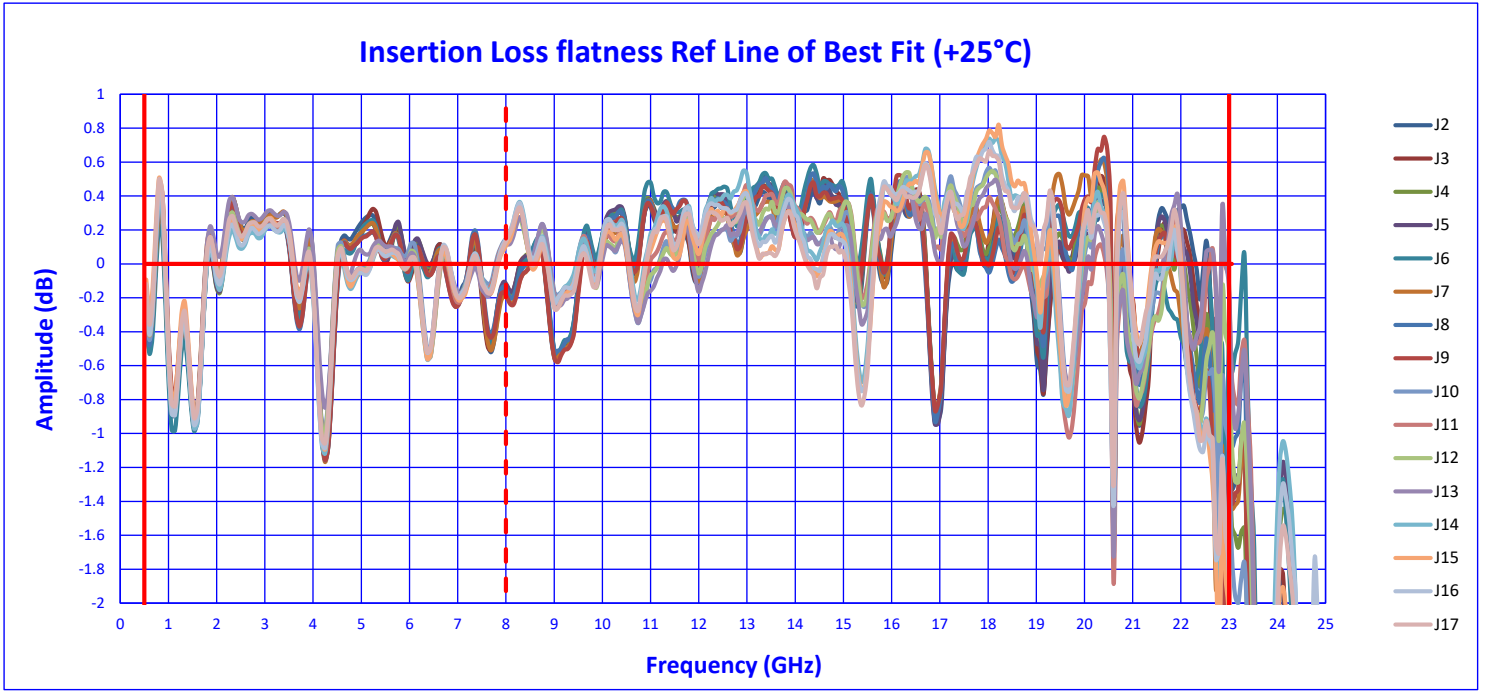


Insertion Loss over Theoretical Power Split of 12 dB (+25°C)





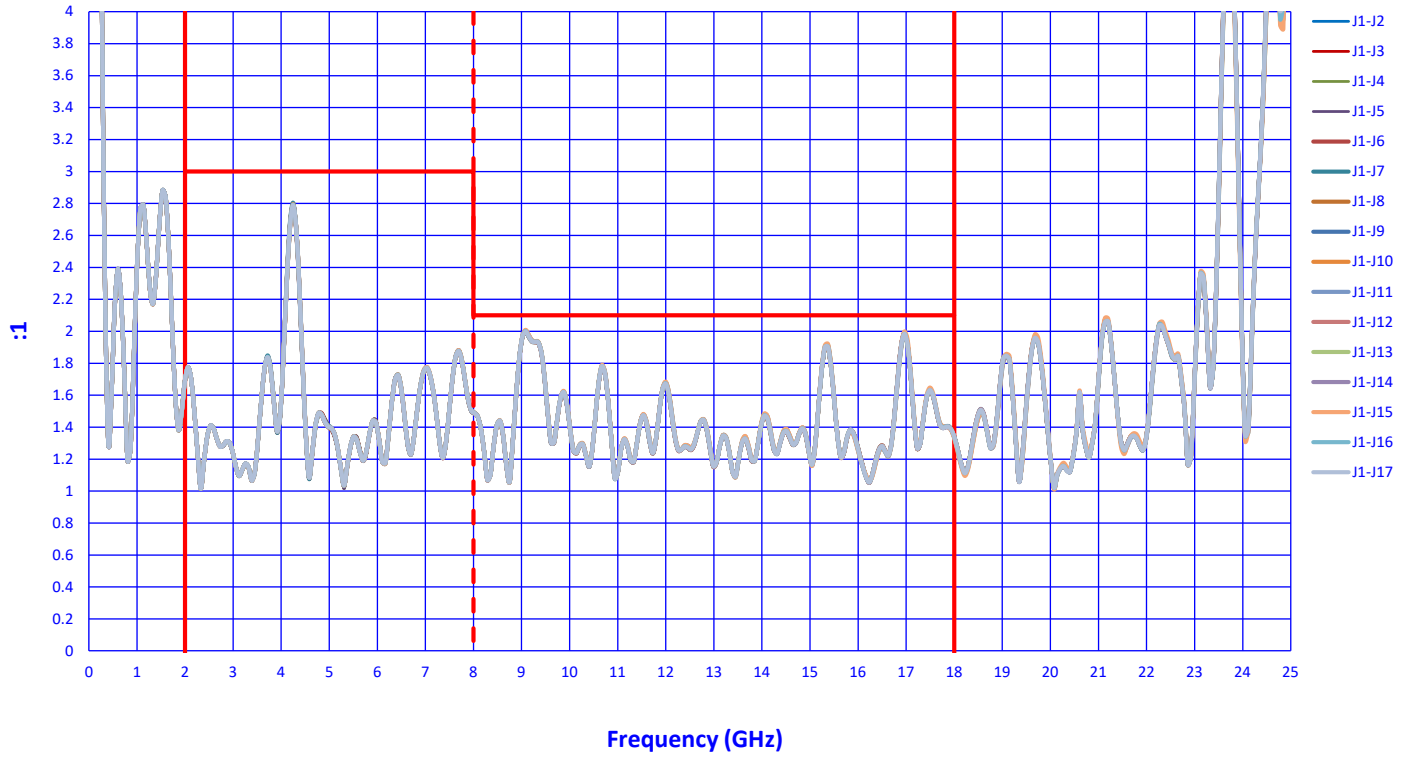
SUMMARY TEST DATA ON APD-16-218-292FF



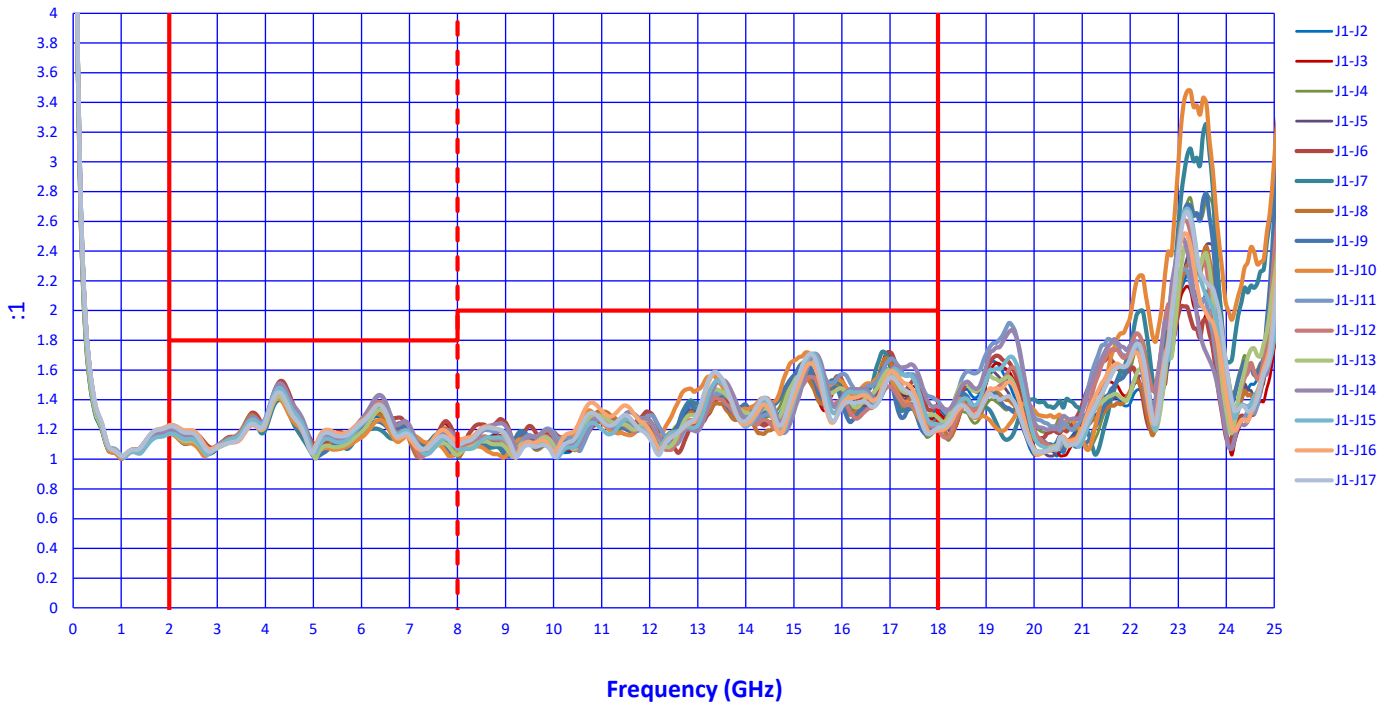


SUMMARY TEST DATA ON APD-16-218-292FF

VSWR IN (+25°C)



VSWR OUT (+25°C)





SUMMARY TEST DATA ON APD-16-218-292FF

