



SUMMARY TEST DATA ON P2T-100M56G-100-T

Customer: DEMO-PMI
 SO No: _____
 Model No: P2T-100M56G-100-T
 Serial No: DEMO-PMI

Tested By: A. Lopez
 Temperature: +25°C
 Date: 10/19/2020
 Drawing No: 27627766 REV: A1

TEST ITEM NO.	PARAMETERS	SPECIFIED VALUE	TEST RESULTS	QA QC
			+25°C	
1	Frequency Range:	100 MHz to 56 GHz	100 MHz to 56 GHz	PMI QA 2
2	Insertion Loss:	5.0 dB (100MHz to 18 GHz) Max. 6.0 dB (18 to 40 GHz) Max. 9.0 dB (40 to 52 GHz) Max. 12.0 dB (52 to 56 GHz) Typ.	2.85 dB	
			5.42 dB	
			7.83 dB	
			10.83 dB	
			See Graphs	
3	VSWR:	2.2:1 (100MHz to 18 GHz) Typ. 2.5:1 (18 to 40 GHz) Typ. 3.0:1 (40 to 52 GHz) Typ. 3.0:1 (52 to 56 GHz) Typ.	2.28 :1	
			2.45 :1	
			2.5 :1	
			2.09 :1	
			See Graphs	
4	Isolation:	70 dB (100MHz to 1 GHz) Typ. 100 dB (1 to 18 GHz) Typ. 80 dB (18 to 40 GHz) Typ. 80 dB (40 to 52 GHz) Typ. 80 dB (52 to 56 GHz) Typ.	101.18 dB	
			100.73 dB	
			78.32 dB	
			76.68 dB	
			73.92 dB	
5	Video Transients	800 mV Typ.	Pass See Typical Characteristics	
6	Amplitude Balance:	0.5 dB (100MHz to 18 GHz) Max. 0.8 dB (18 to 40 GHz) Max. 1.3 dB (40 to 52 GHz) Max 1.3 dB (52 to 56 GHz) Max.	0.38 dB	
			0.58 dB	
			1.25 dB	
			0.46 dB	
			See Graphs	
7	Phase Balance	5° (100MHz to 18 GHz) Max. 10° (18 to 40 GHz) Max. 10° (40 to 52 GHz) Max 15° (52 to 56 GHz) Max.	2.64 °	
			5.49 °	
			7.7 °	
			10.51 °	
			See Graphs	
5	Input Power:	20 dBm CW Max.	Pass See Typical Characteristics	
6	Switching Speed:	50 ns Max.	Pass See Typical Characteristics	
7	Control Signal:	TTL Logic "0" = J1-J2 On TTL Logic "1" = J1-J3 On	Pass	
8	DC Voltage:	+5 VDC @ 100 mA Max. -5 VDC @ 100 mA Max.	+5 VDC @ 88 mA -5 VDC @ 78 mA	PMI QA 2

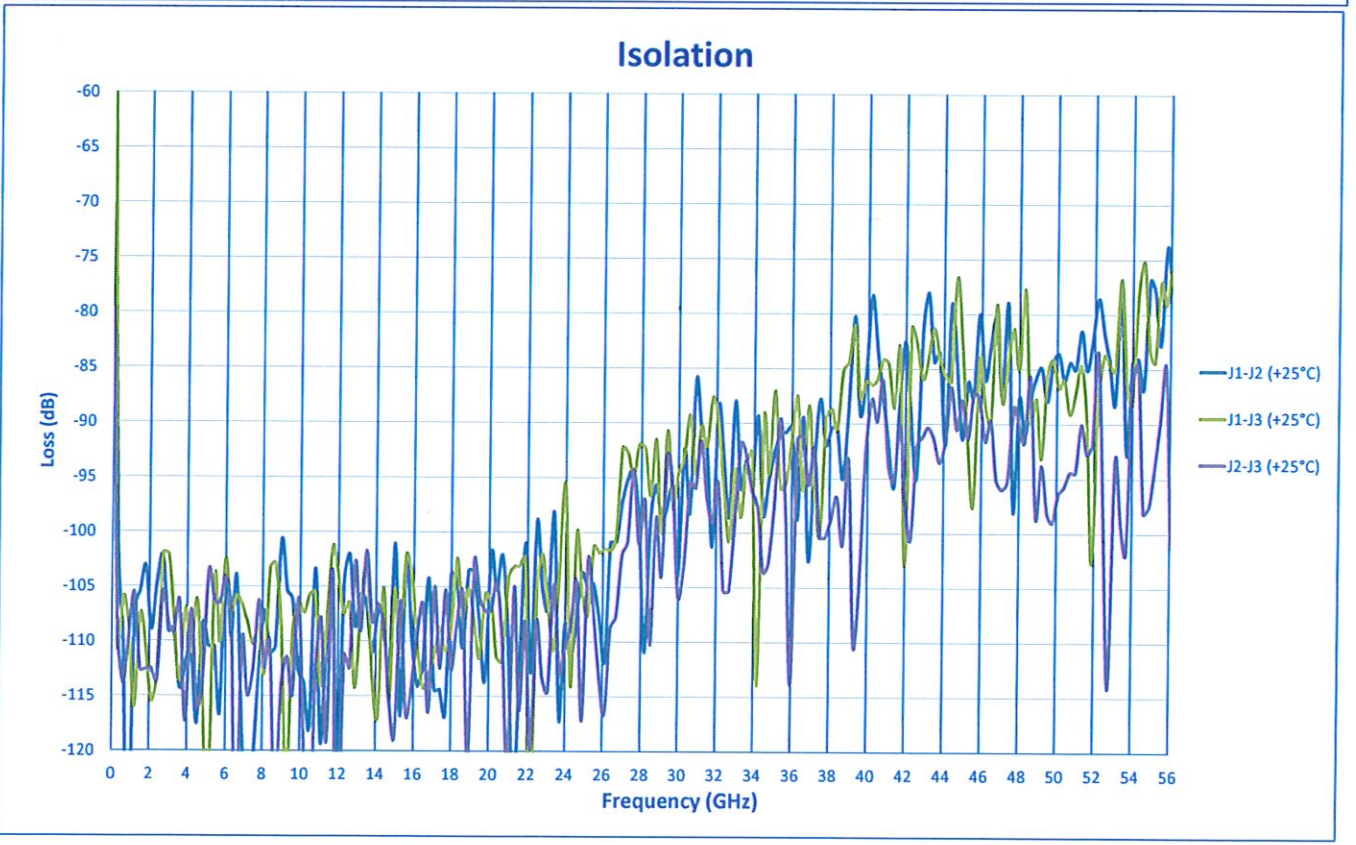
QA/QC Approval: 

PMI
QA 2

Date: 10/20/20

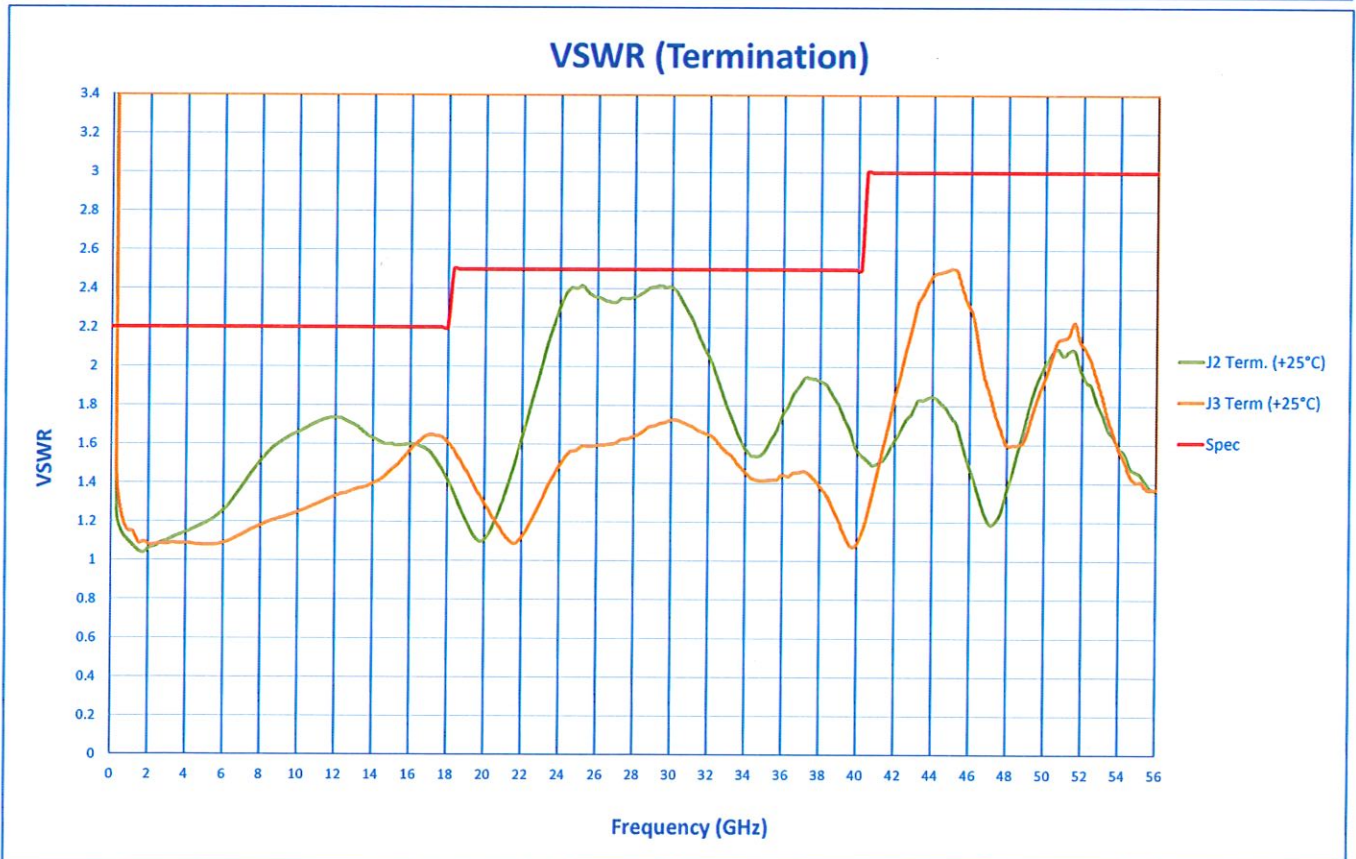
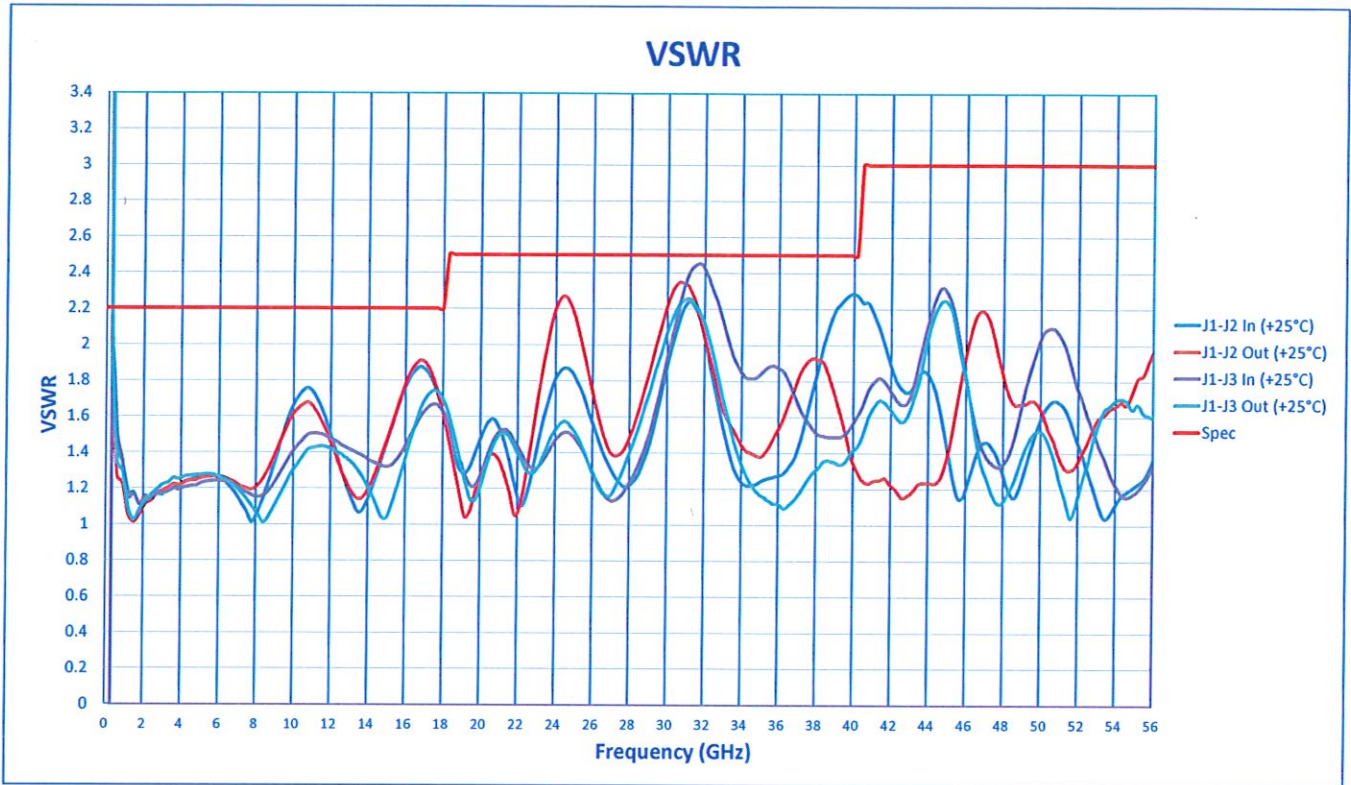


SUMMARY TEST DATA ON P2T-100M56G-100-T





SUMMARY TEST DATA ON P2T-100M56G-100-T





SUMMARY TEST DATA ON P2T-100M56G-100-T

