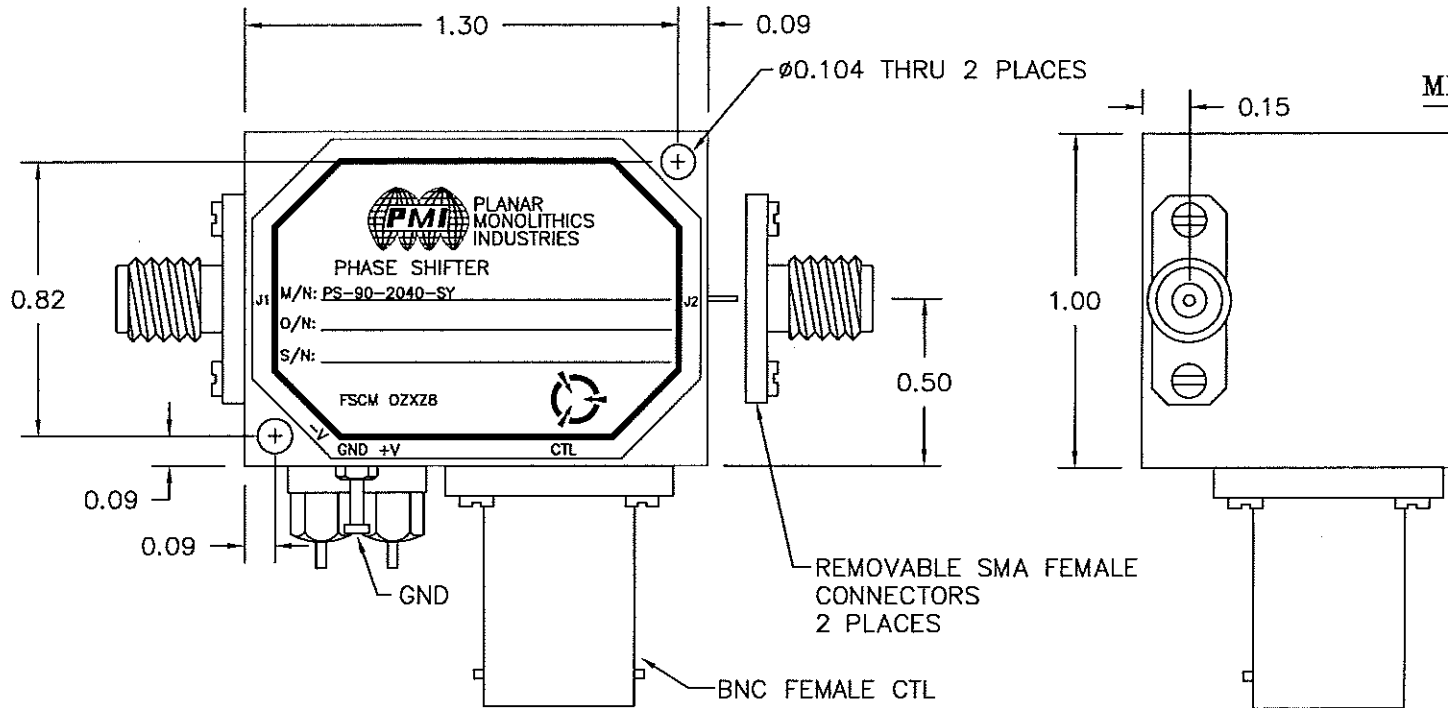


DESCRIPTION

THE PMI MODEL PS-90-2040-SY IS A MINIATURE, 0 TO 180 DEGREE BI-PHASE MODULATOR/PHASE SHIFTER WITH TTL CONTROL LOGIC OPERATING OVER A FREQUENCY RANGE OF 2856 MHz +/- 15MHz.

REVISIONS				
ZONE	REV.	DESCRIPTION	DATE	APPROVED
-	-	ORIGINAL RELEASE, JOB# P801002XE	01/25/08	



ALL DIMENSIONS ARE IN INCHES
 TOLERANCES:
 X.XX ±0.020
 X.XXX ±0.010

PLANAR MONOLITHICS INDUSTRIES, INC.

7311-G GROVE ROAD
 FREDERICK, MARYLAND 21704 USA
 TEL: 301-631-1579 FAX: 301-662-2029
 WEBSITE: www.planarmonolithicsindustries.com
 E-MAIL: sales@planarmonolithics.com
 ISO 9001:2000 CERTIFIED



APPROVALS		DATE	TITLE		
DRAWN <i>PMV</i>		1/25/08	MECHANICAL OUTLINE PS-90-2040-SY		
CHECKED <i>[Signature]</i>		1/29/08	SIZE A	FSCM NO. OZXZ8	DWG NO. 100-7745
ISSUED			SCALE N:S	SHEET 2 OF 3	

DESCRIPTION

THE PMI MODEL PS-90-2040-SY IS A MINIATURE, 0 TO 180 DEGREE BI-PHASE MODULATOR/PHASE SHIFTER WITH TTL CONTROL LOGIC OPERATING OVER A FREQUENCY RANGE OF 2856 MHz +/- 15MHz.

SPECIFICATIONS

- FREQUENCY RANGE: 2856MHz +/- 15MHz
- RF IMPEDANCE: 50 OHMS NOMINAL
- DIFFERENTIAL PHASE SHIFT: 180° ± 2°
- DIFFERENTIAL INSERTION LOSS: 0.3dB MAX.
- INSERTION LOSS: 1.0dB MAXIMUM
- VSWR INPUT: 1.2:1 MAX
- CONTROL INPUT: TTL, 1 UNIT LOAD
- SWITCHING TIME: 50 nS MAX, 10% TO 90%
- RF INPUT POWER: 1.0 WATT CW MAX
- POWER SUPPLY
 - +V: +5V @ 70mA MAXIMUM
 - V: -12V @ 30mA MAXIMUM
- DC CONNECTORS: RFI FILTER, SOLDER TERMINAL

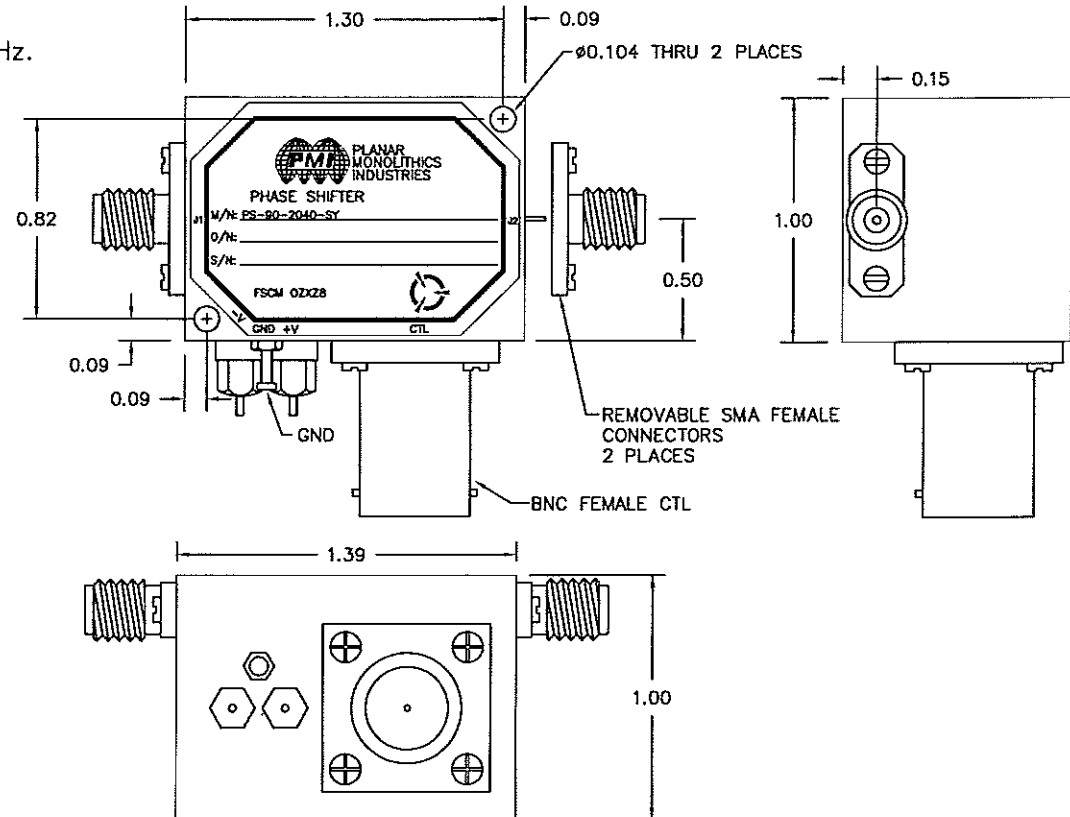
ENVIRONMENTAL RATINGS

- TEMPERATURE: -55°C TO +85°C (OPERATING)
..... -65°C TO +125°C (STORAGE)
- HUMIDITY: MIL-STD-202F, METHOD 103B COND. B
- SHOCK: MIL-STD-202F, METHOD 213B COND. B
- VIBRATION: MIL-STD-202F, METHOD 204D COND. B
- ALTITUDE: MIL-STD-202F, METHOD 105C COND. B
- TEMPERATURE CYCLE: MIL-STD-202F, METHOD 107D COND. A

NOTE: SPECIFICATIONS WILL VARY OVER OPERATING TEMPERATURE
NOTE: THE ABOVE SPECIFICATIONS ARE SUBJECT TO CHANGE OR REVISION

ALL DIMENSIONS ARE IN INCHES
TOLERANCES:
X.XX ±0.020
X.XXX ±0.010

ZONE		REV.	DESCRIPTION	DATE	APPROVED
		-	ORIGINAL RELEASE, JOB# P801002XE	01/25/08	



PLANAR MONOLITHICS INDUSTRIES, INC.

7311-G GROVE ROAD
FREDERICK, MARYLAND 21704 USA
TEL: 301-631-1579 FAX: 301-662-2029
WEBSITE: www.planarmonolithicsindustries.com
E-MAIL: sales@planarmonolithics.com
ISO 9001:2000 CERTIFIED



APPROVALS		DATE	TITLE		
DRAWN <i>PMV</i>		1/25/08	PRODUCT FEATURE PS-90-2040-SY		
CHECKED <i>JA</i>		1/29/08	2856 MHz +/-15MHz BI-PHASE MODULATOR/PHASE SHIFTER		
ISSUED			SIZE A	FSCM NO. OZ28	DWG NO. 100-7745
			SCALE N:S	SHEET 1 OF 3	