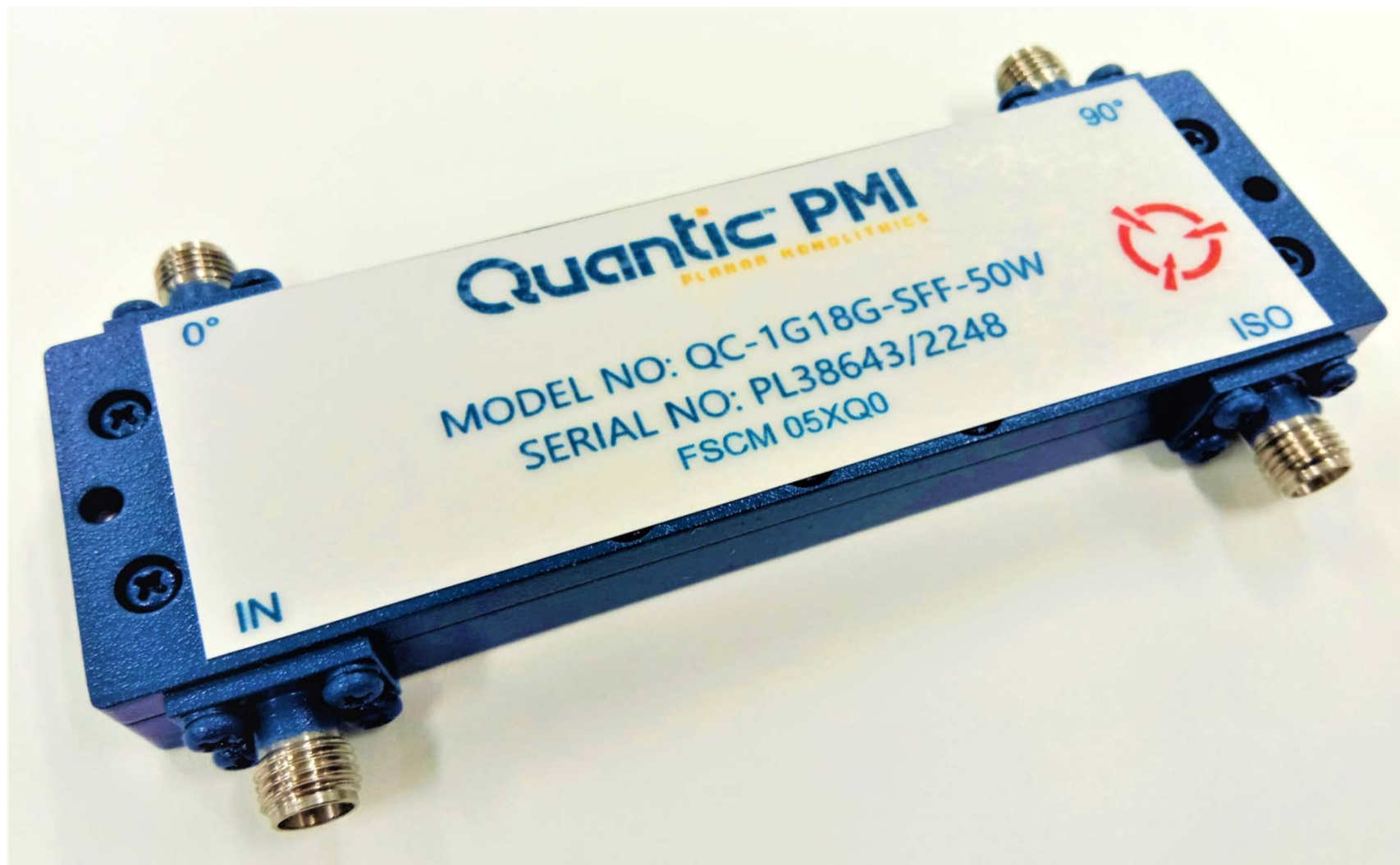


**TYPICAL CHARACTERISTICS  
ON  
QC-1G18G-SFF-50W**

**PMI MODEL NO. QC-1G18G-SFF-50W IS A 1.0 TO 18.0 GHz HYBRID COUPLER.**

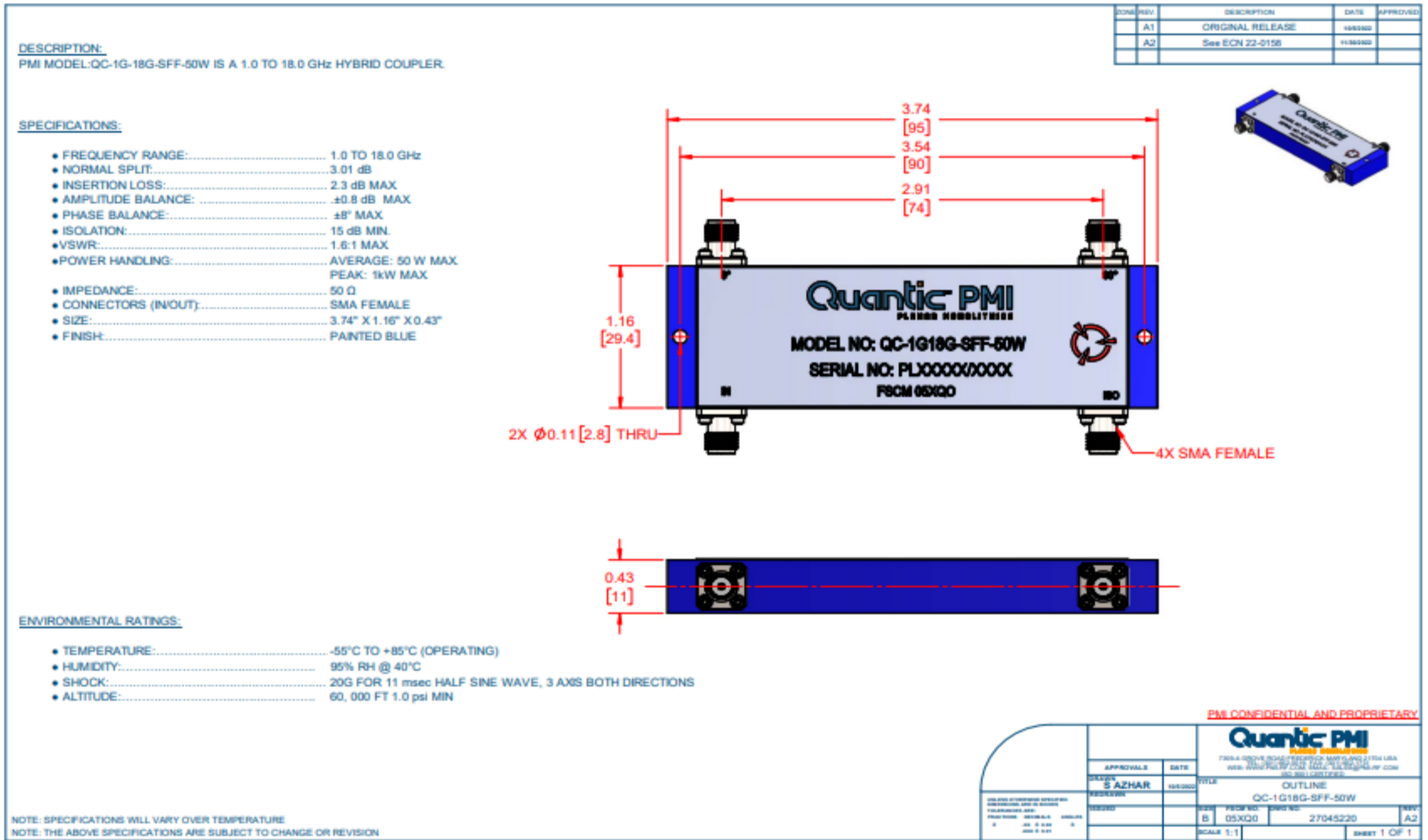


**November 30, 2022**

**Tested By: Yuyi Li**

# TYPICAL CHARACTERISTICS ON QC-1G18G-SFF-50W

## Outline Drawing



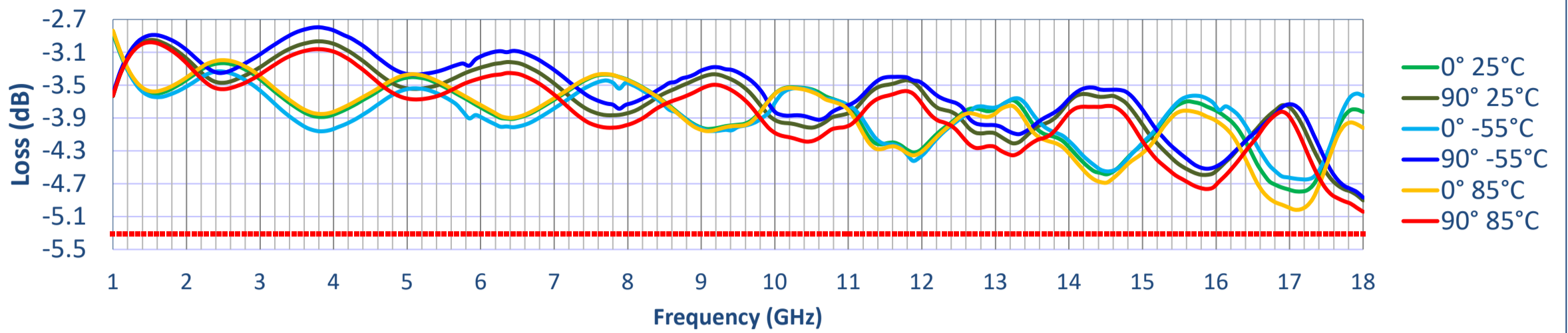
**TYPICAL CHARACTERISTICS  
ON  
QC-1G18G-SFF-50W**

**Technical Specifications**

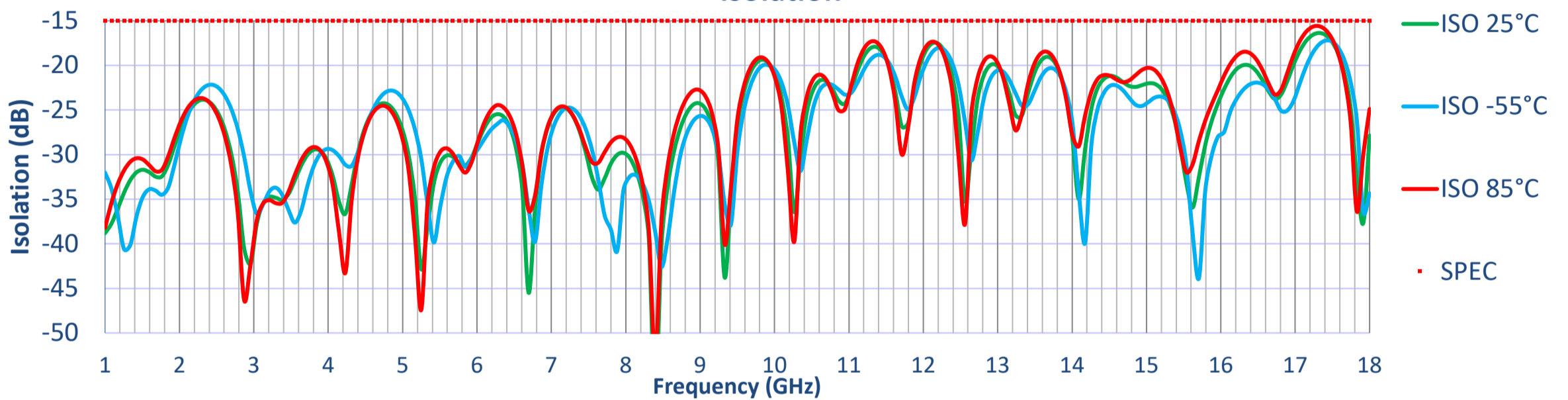
TEST ITEM NO.	PARAMETERS	SPECIFIED VALUE	TEST RESULTS		
			25°C	-55°C	85°C
1	Frequency Range	1 GHz to 18 GHz	1 GHz to 18 GHz		
2	Insertion Loss	2.3 dB Max.	1.89 dB	1.86 dB	2.03 dB
3	Isolation	15 dB Min.	16.4 dB	17.2 dB	15.6 dB
4	VSWR: In/Out	1.6:1 Max.	1.47:1 In	1.5:1 In	1.5:1 In
			1.46:1 Out	1.44:1 Out	1.5:1 Out
5	Amplitude Balance	±0.8 dB Max.	±0.54 dB	±0.63 dB	±0.57 dB
6	Phase Balance	±8° Max.	±1.55°	±3.12°	±1.69°
7	Input Power	50 W CW Max. 1000 W Peak Max.	Pass See Plots		

**TYPICAL CHARACTERISTICS  
ON  
QC-1G18G-SFF-50W**

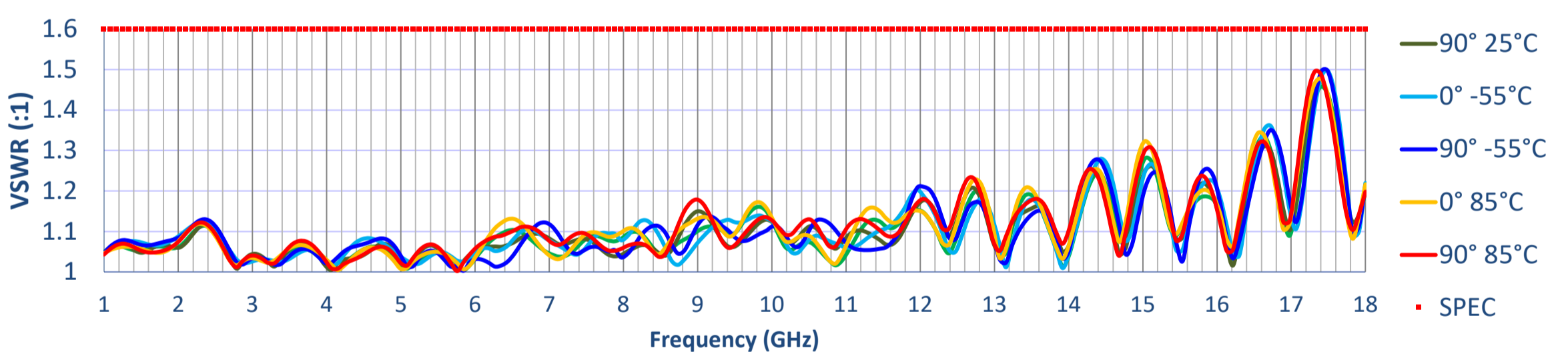
**Insertion Loss**



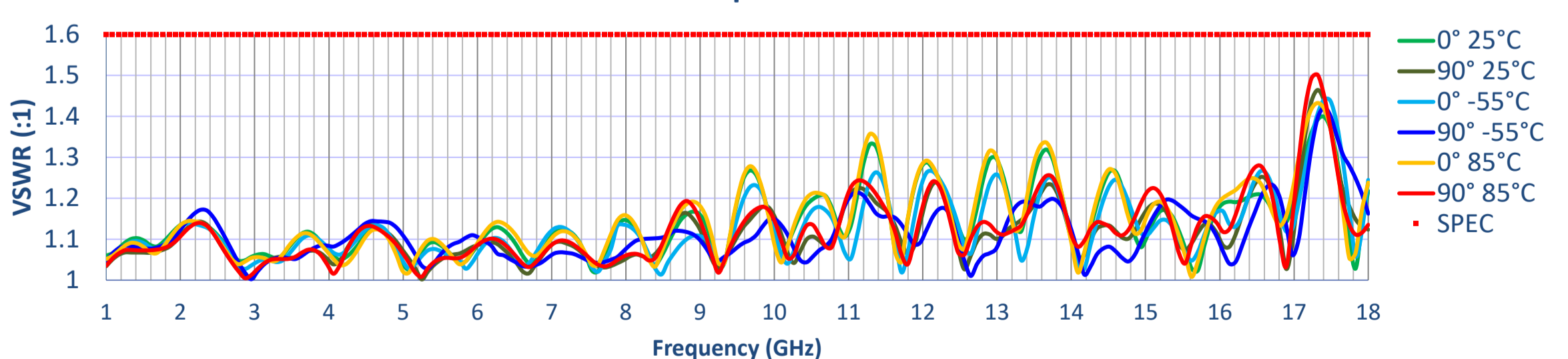
**Isolation**



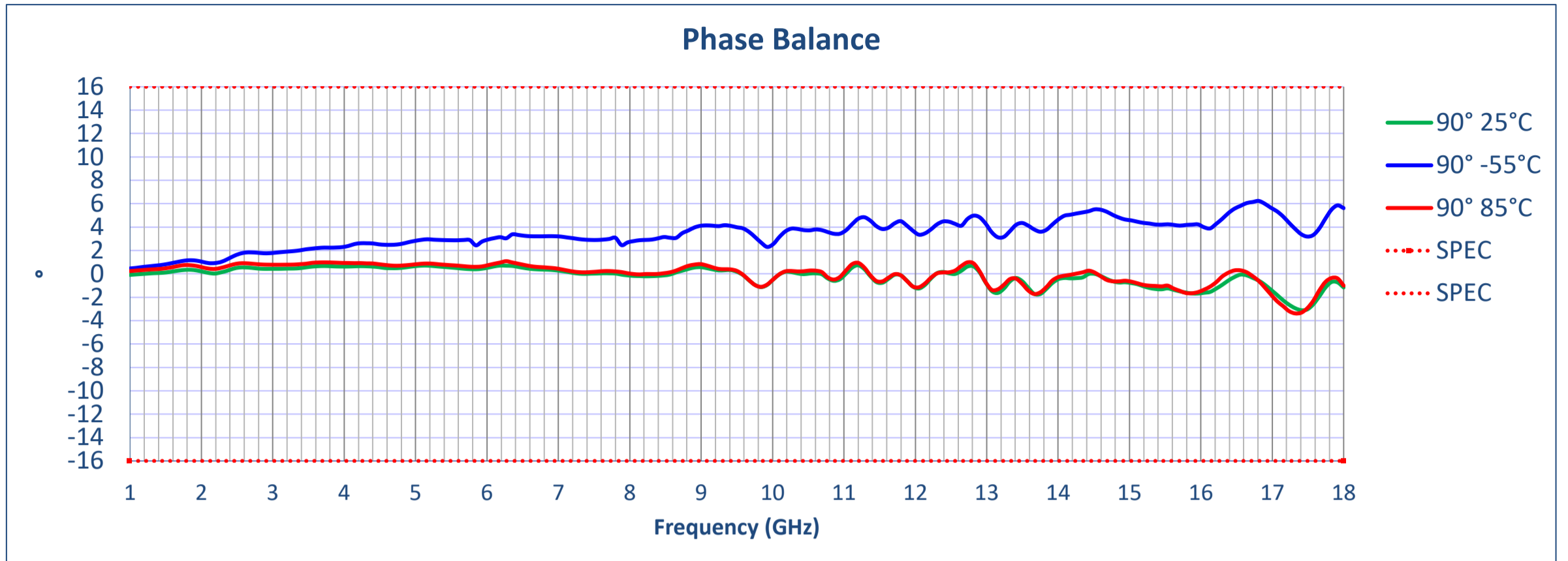
**Input VSWR**



**Output VSWR**



**TYPICAL CHARACTERISTICS  
ON  
QC-1G18G-SFF-50W**



**TYPICAL CHARACTERISTICS  
ON  
QC-1G18G-SFF-50W**

