

DESCRIPTION

PMI MODEL: P4T-0R5G18G-50-T-SFF-OPT50M4G IS A SINGLE POLE FOUR THROW REFLECTIVE SWITCH. THIS MODEL HAS THE FOLLOWING SPECIFICATIONS.

SPECIFICATIONS

- FREQUENCY RANGE: 0.05 TO 4 GHz
- INSERTION LOSS: 1.25dB Max
- ISOLATION: 50dB Min
- VSWR (ON/OFF): 2.0:1 Max
- SURVIVAL POWER (ON/OFF): -1W CW
- SWITCHING SPEED (ON/OFF)- 25ns
- RISE/FALL TIME: 10ns
- CONTROL LOGIC: TTL "0" = SWITCH ON
TTL "1" = SWITCH OFF
- POWER SUPPLY: +5VDC ±5% @ 135 mA Max
-5VDC ±5% @ 65 mA Max
- CONNECTORS IN/OUT: SMA (F) REMOVABLE
- POWER + CONTROL: SOLDER PINS
- SIZE: (L) 1.0" X (W) 1.2" X (H) 0.24"
- FINISH: GOLD PLATED

ENVIRONMENTAL RATINGS

- TEMPERATURE: -45°C TO +70°C (OPERATING)
-65°C TO +125°C (STORAGE)
- HUMIDITY: MIL-STD-202G, METHOD 103B COND. B
- SHOCK: MIL-STD-202G, METHOD 213B COND. B
- VIBRATION: MIL-STD-202G, METHOD 204D COND. B
- ALTITUDE: MIL-STD-202G, METHOD 105C COND. B
- TEMPERATURE CYCLE: MIL-STD-202G, METHOD 107G COND. A

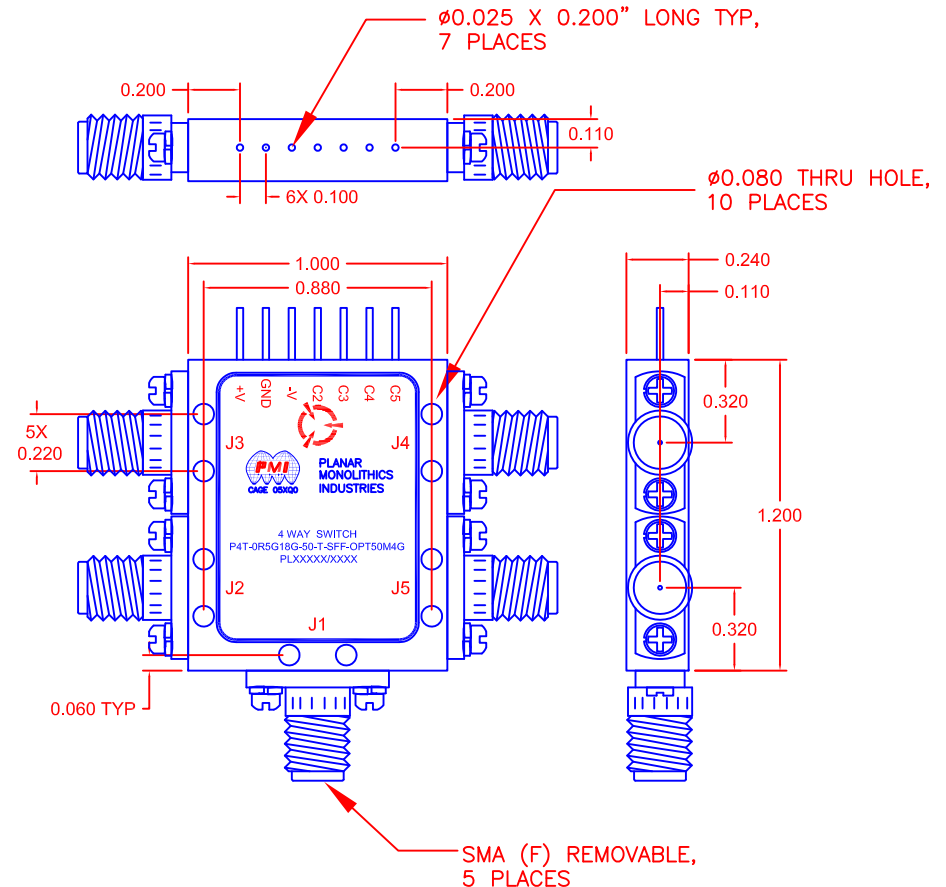
ALL DIMENSIONS ARE IN INCHES

TOLERANCES:
X.XX ±0.020
X.XXX ±0.010

NOTE: SPECIFICATIONS WILL VARY OVER OPERATING TEMPERATURE
NOTE: THE ABOVE SPECIFICATIONS ARE SUBJECT TO CHANGE OR REVISION

REVISIONS				
ZONE	REV.	DESCRIPTION	DATE	APPROVED
	A1	ORIGINAL RELEASE	02/16/14	

MECHANICAL OUTLINE



PMI CONFIDENTIAL AND PROPRIETARY

PLANAR MONOLITHICS INDUSTRIES, INC.

7311-F GROVE ROAD
FREDERICK, MARYLAND 21704 USA
TEL: 301-662-5019 FAX: 301-662-1731
WEBSITE: www.pmi-rf.com
E-MAIL: sales@pmi-rf.com
ISO 9001 CERTIFIED



APPROVALS		DATE	TITLE			
DRAWN <i>sfk</i>		02/19/14	PRODUCT FEATURE			
REDRAWN <i>JPU</i>		07/12/17	P4T-0R5G18G-50-T-SFF-OPT50M4G			
ISSUED			SIZE	FSCM NO.	DWG NO.	REV.
			A	05XQ0	27032960	A1
			SCALE	N:S		SHEET
					1 OF 1	