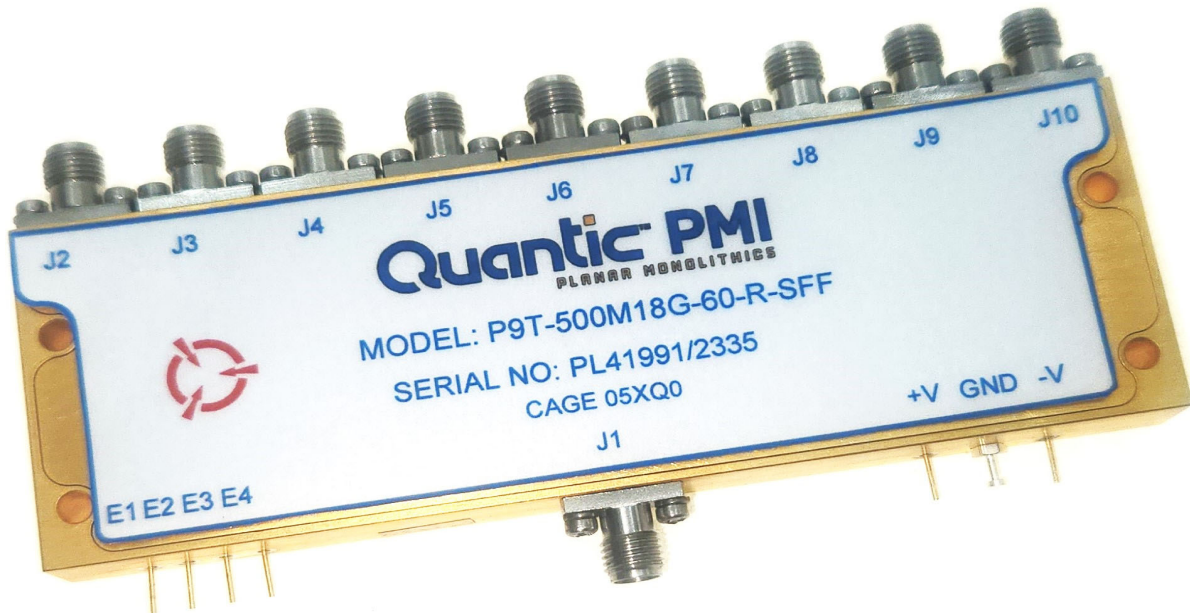


**TYPICAL CHARACTERISTICS
ON
P9T-500M18G-60-R-SFF**

PMI MODEL P9T-500M18G-60-R-SFF IS A HIGH SPEED, SINGLE POLE, NINE THROW REFLECTIVE SWITCH CAPABLE OF SWITCHING WITHIN 100ns. THE FREQUENCY RANGE IS 0.5 TO 18.0 GHz.



Reported By John R.
AUTHOR Noor Azhar
DATE Oct 11 2023

**TYPICAL CHARACTERISTICS
ON
P9T-500M18G-60-R-SFF**

PRODUCT FEATURE

DESCRIPTION:

PMI MODEL P9T-500M18G-60-R-SFF IS A HIGH SPEED, SINGLE POLE, NINE THROW REFLECTIVE SWITCH CAPABLE OF SWITCHING WITHIN 100ns. THE FREQUENCY RANGE IS 0.5 TO 18.0 GHZ.

SPECIFICATIONS:

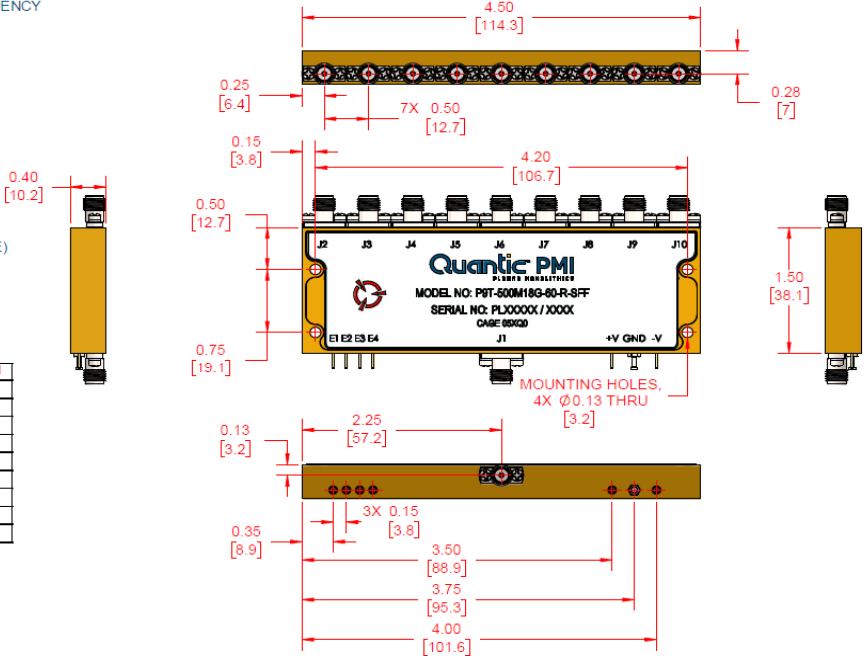
- FREQUENCY RANGE:..... 0.5 TO 18.0 GHZ
- ISOLATION:..... 60 dB MIN
- INSERTION LOSS:..... 6.5 dB MAX
- VSWR (IN/OUT):..... 2.0:1 MAX
- OPERATING INPUT POWER:..... +25 dBm CW
- SWITCHING SPEED:..... 100 ns MAX
- DC VOLTAGE AND CURRENT:..... +5VDC @ 300 mA MAX
-12 TO -15VDC @ 50 mA MAX
- CONTROL SIGNAL:..... 4 LINE DECODED TTL (SEE TABLE)
- CONNECTORS:..... SMA (F)
- FINISH:..... GOLD PLATED
- SIZE:..... 4.5" X 1.5" X 0.4"

E1	E2	E3	E4	LOW LOSS PATH
0	0	0	1	J1 TO J2
0	0	1	0	J1 TO J3
0	0	1	1	J1 TO J4
0	1	0	0	J1 TO J5
0	1	0	1	J1 TO J6
0	1	1	0	J1 TO J7
0	1	1	1	J1 TO J8
1	0	0	0	J1 TO J9
1	0	0	1	J1 TO J10

ENVIRONMENTAL RATINGS:

- TEMPERATURE:..... -54°C TO +85°C (OPERATING)
-65°C TO +125°C (STORAGE)
- HUMIDITY:..... MIL-STD-202F, METHOD 103B COND. B
- SHOCK:..... MIL-STD-202F, METHOD 213B COND. B
- VIBRATION:..... MIL-STD-202F, METHOD 204D COND. B
- ALTITUDE:..... MIL-STD-202F, METHOD 105C COND. B
- TEMPERATURE CYCLE:..... MIL-STD-202F, METHOD 107D COND. A

ZONE	REV.	DESCRIPTION	DATE	APPROVED
	A1	ORIGINAL RELEASE	4/26/2010	



PMI CONFIDENTIAL AND PROPRIETARY

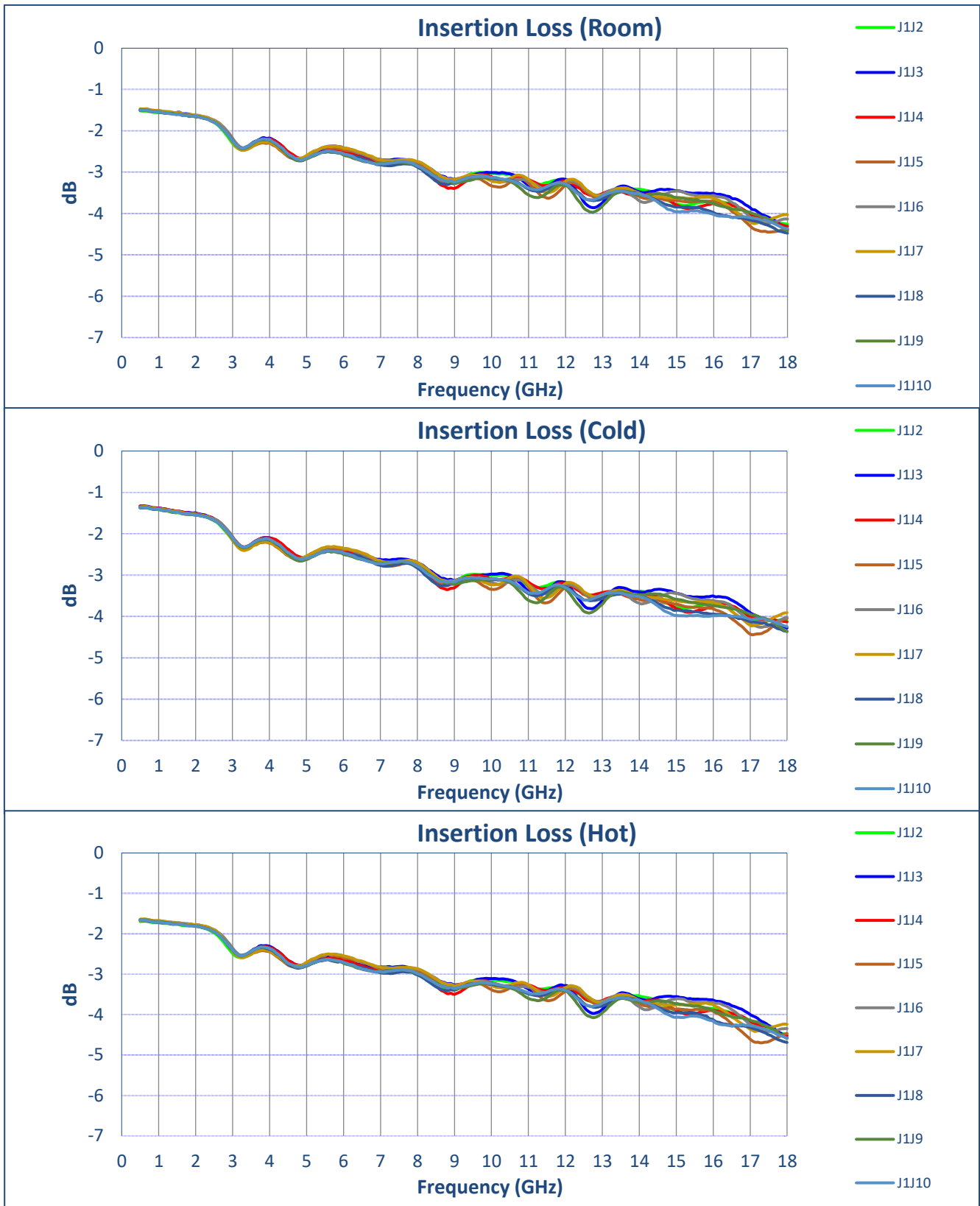
<small>ONLY TO BE FILLED BY THE CUSTOMER</small> QUANTIC PMI PLANAR MONOLITHICS 7309-A GROVE ROAD FREDERICK, MD 21704 USA		PART NO. P9T-500M18G-60-R-SFF	
MATERIAL: FINISH:		APPROVALS DATE SAZHAR	
NEXT ASSY USED ON APPLICATION:		TITLE OUTLINE	
SCALE 1:1		SHEET 1 OF 1	

**TYPICAL CHARACTERISTICS
ON
P9T-500M18G-60-R-SFF**

TEST DATA

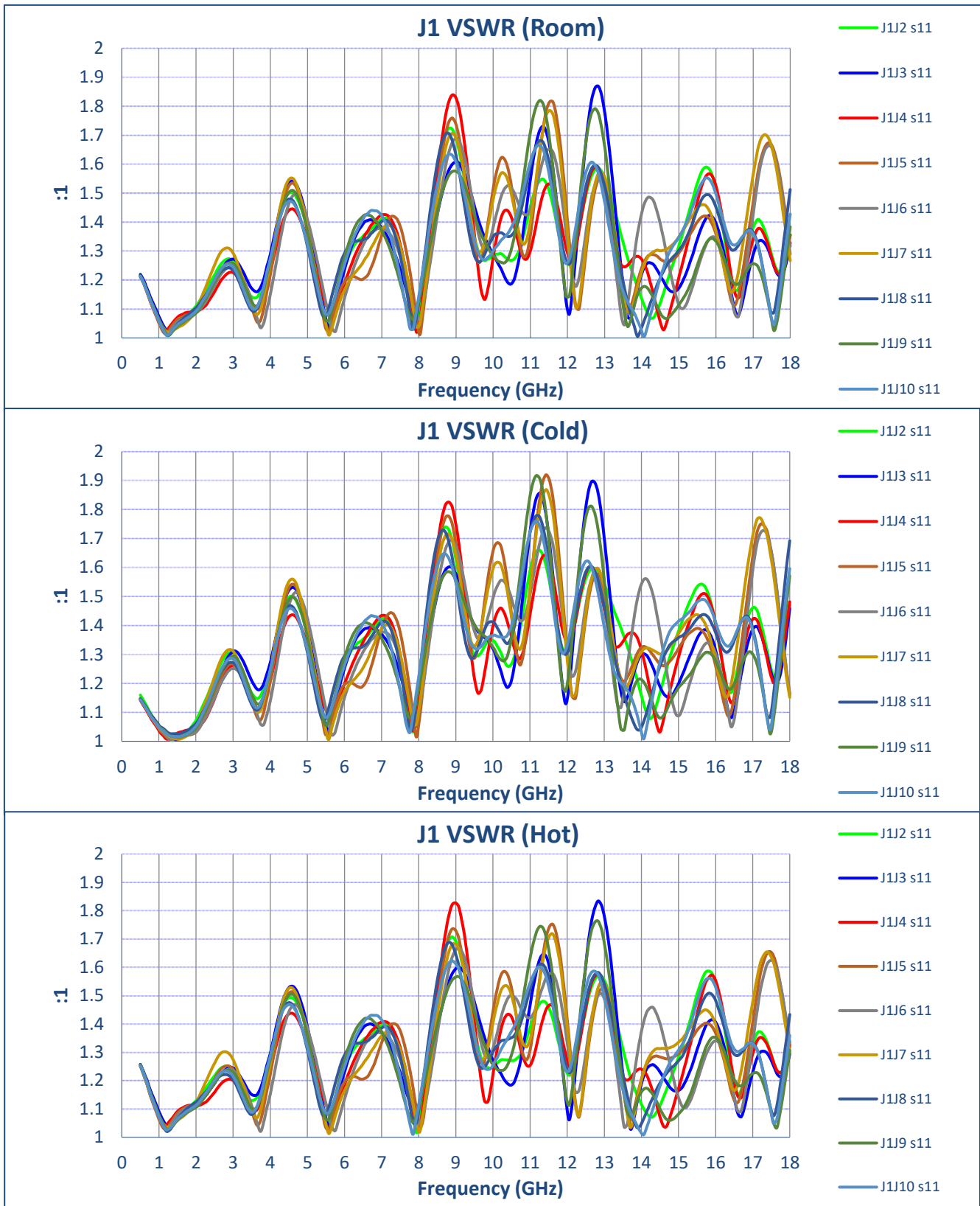
TEST ITEM	PARAMETERS	SPECIFIED VALUE	TEST RESULTS		
			25°C	-40°C	70°C
1	Frequency Range	0.5 GHz to 18 GHz	0.5 GHz to 18 GHz		
2	Isolation	60 dB Min.	86.2 dB	77.6 dB	85 dB
3	Insertion Loss	6.5 dB Max.	4.47 dB	4.44 dB	4.7 dB
4	VSWR: In/Out	2:1 Max.	1.87:1 In 1.88:1 Out	1.92:1 In 1.98:1 Out	1.83:1 In 1.84:1 Out
5	Input Power	25 dBm CW Max Operating	25 dBm	25 dBm	25 dBm
6	Switching Speed Max	100 ns Max.	34 ns		
7	Power Supply	5 V @ 300 mA Max.	5 V @ 400 mA -15 V @ 300 mA	5 V @ 400 mA -15 V @ 300 mA	5 V @ 400 mA -15 V @ 300 mA

**TYPICAL CHARACTERISTICS
ON
P9T-500M18G-60-R-SFF**



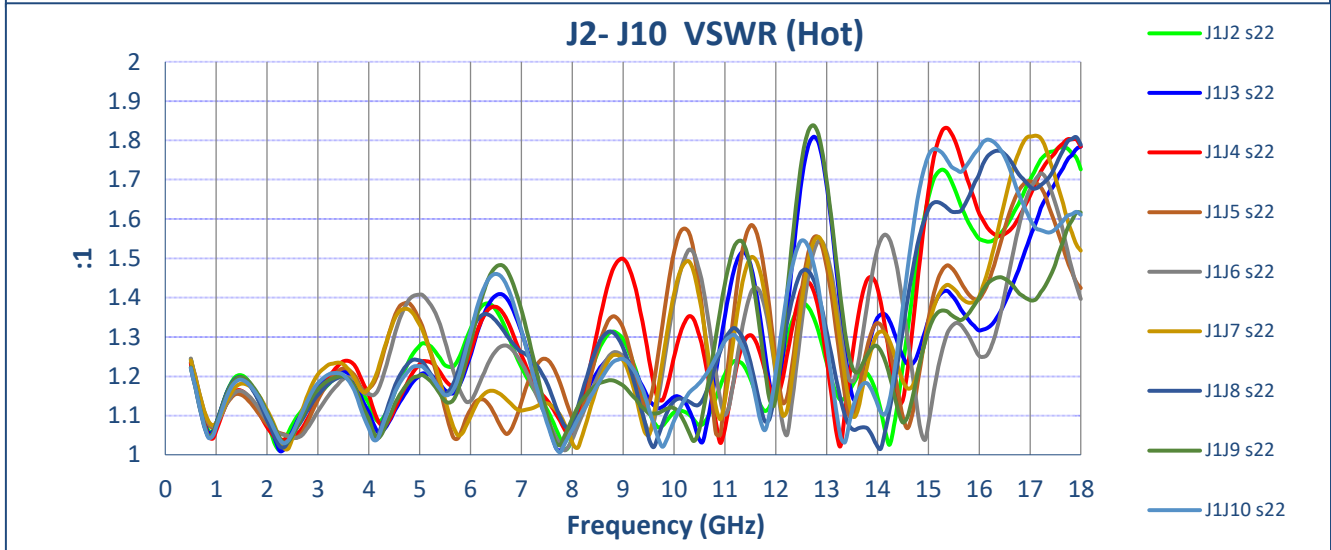
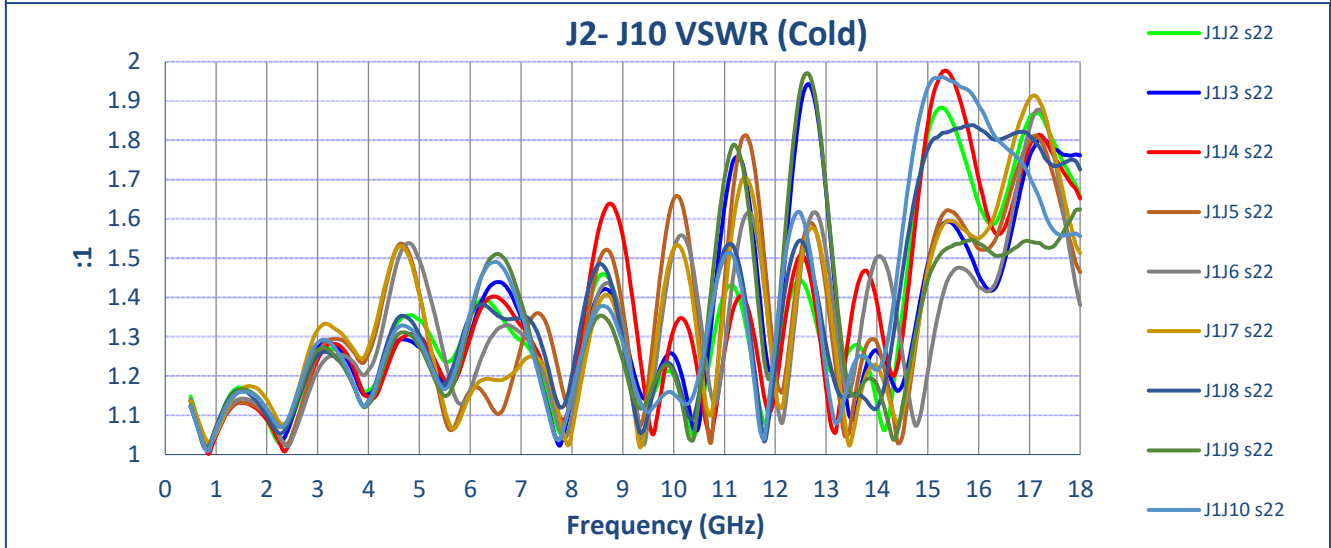
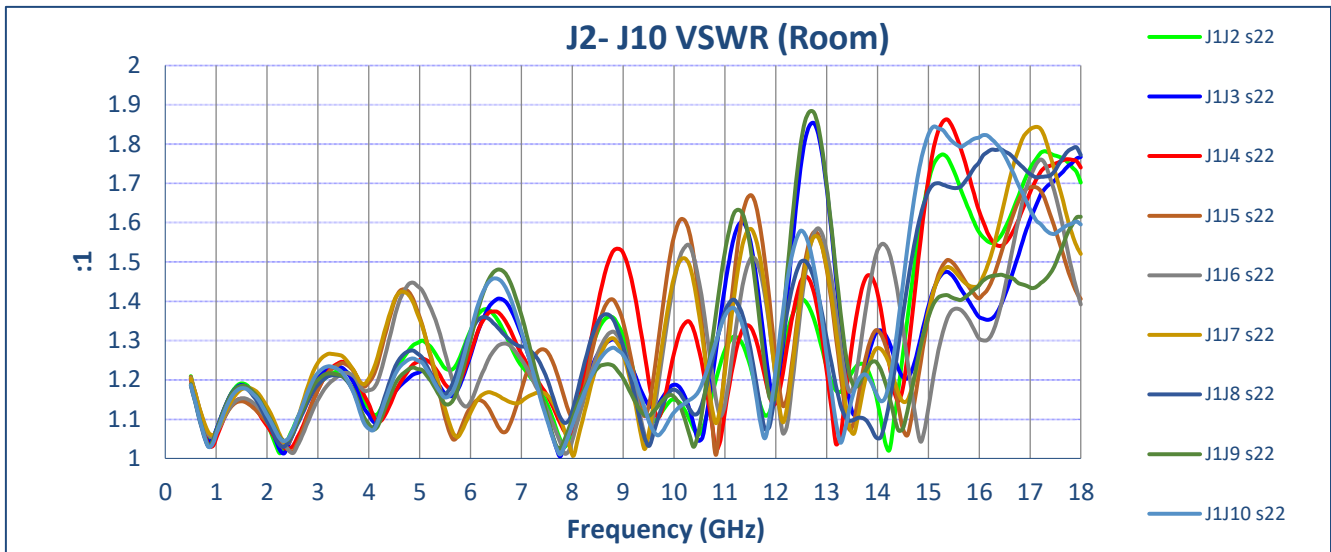
7309-A Grove Road Frederick, MD 21704 USA Phone: (301)662-5019 Fax: (301)662-1731
Email: sales@quanticpmi.com

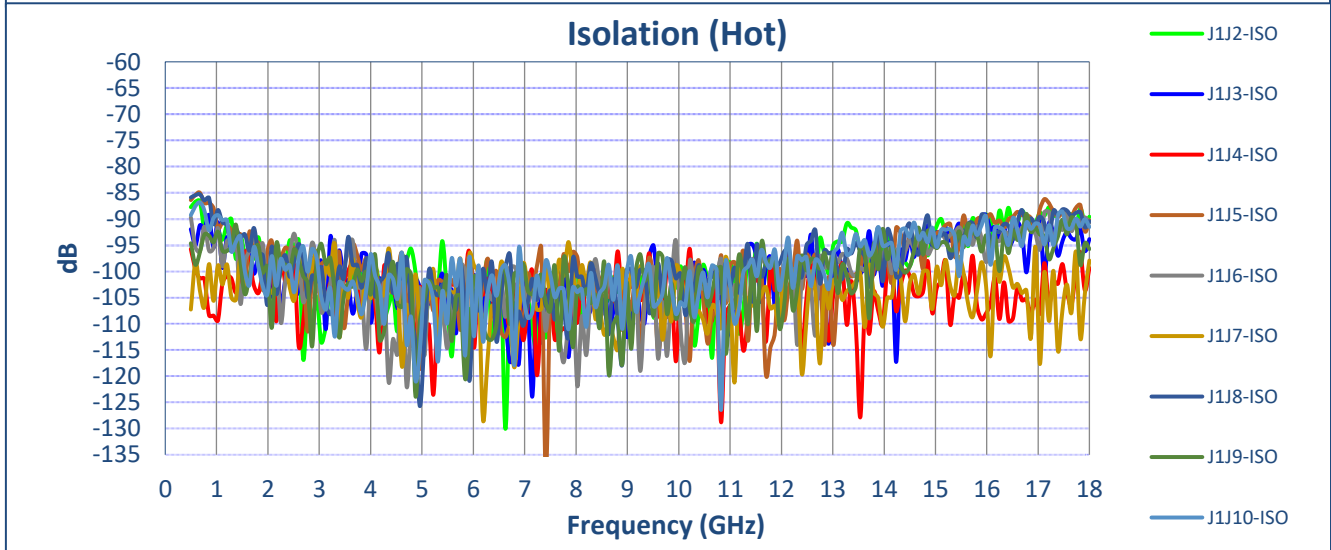
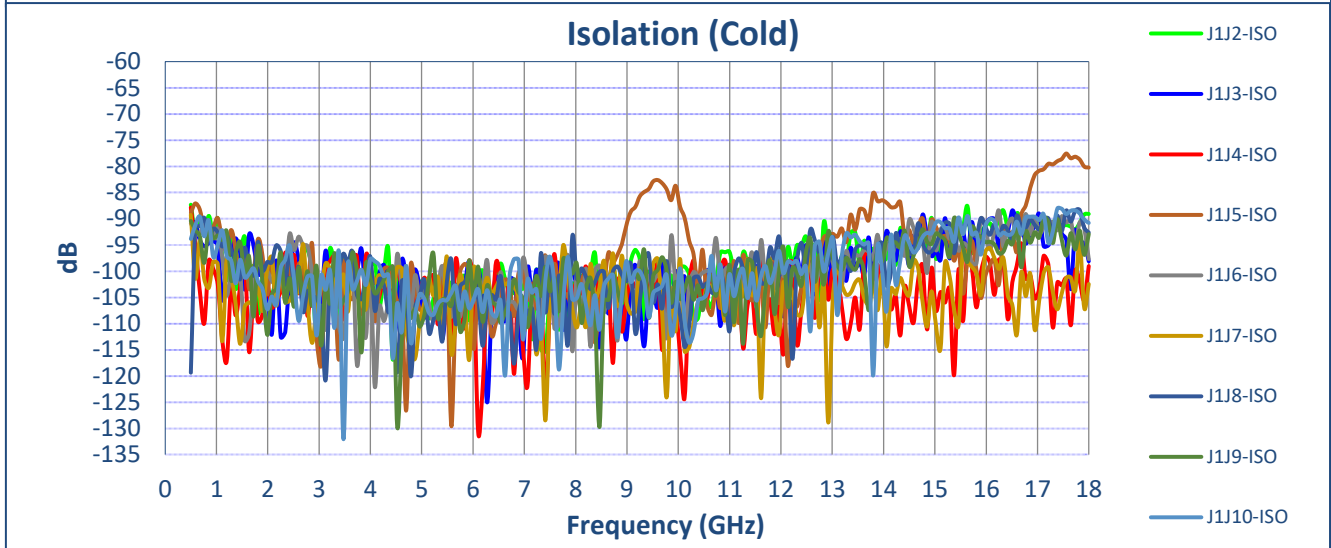
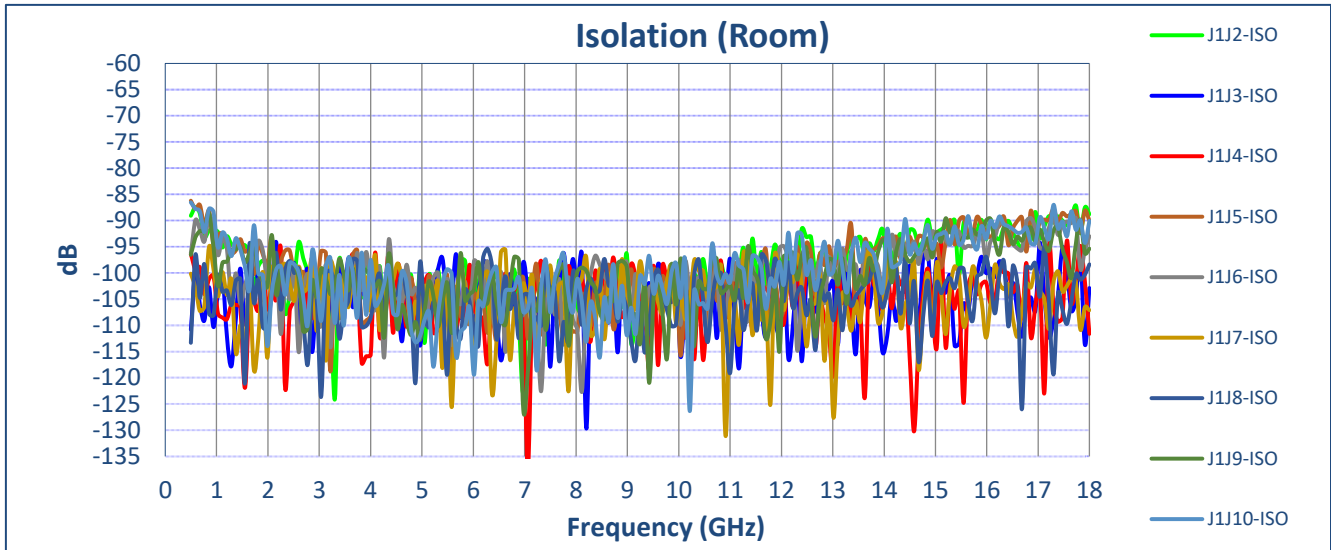
**TYPICAL CHARACTERISTICS
ON
P9T-500M18G-60-R-SFF**



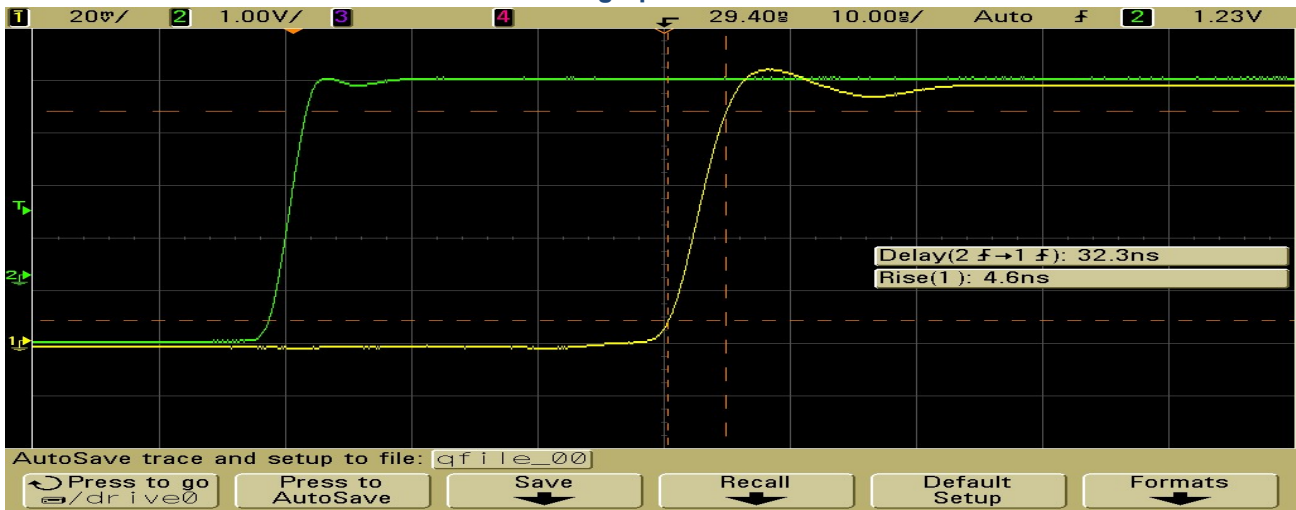
7309-A Grove Road Frederick, MD 21704 USA Phone: (301)662-5019 Fax: (301)662-1731
Email: sales@quanticpmi.com

**TYPICAL CHARACTERISTICS
ON
P9T-500M18G-60-R-SFF**

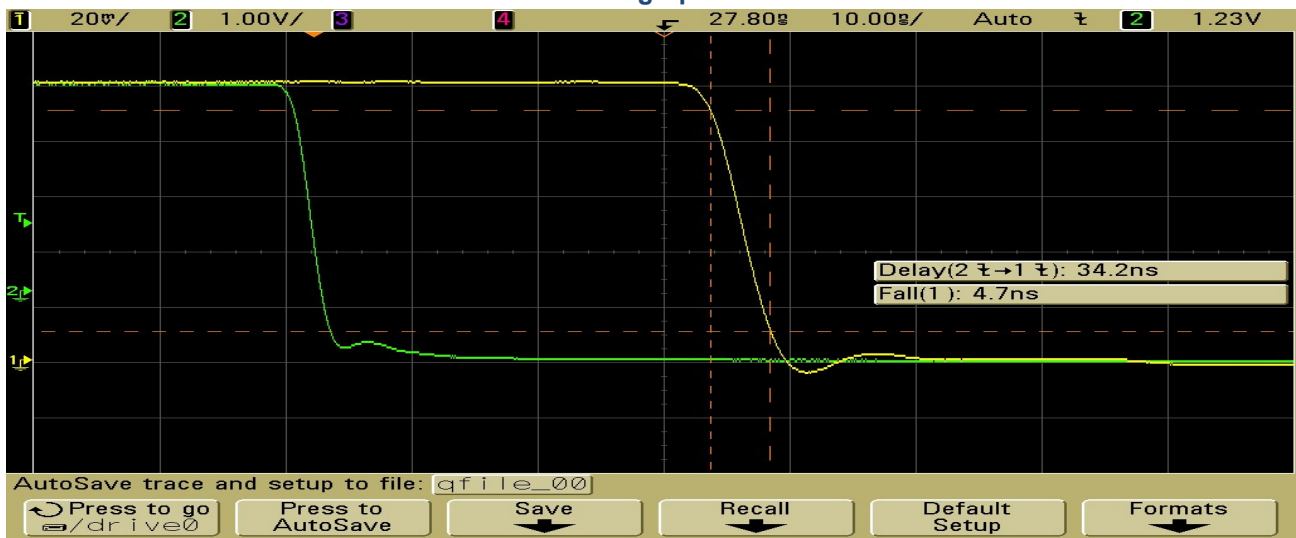




**TYPICAL CHARACTERISTICS
ON
P9T-500M18G-60-R-SFF
Switching Speed On**



Switching Speed Off



Full Pulse

