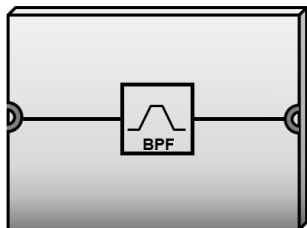


Typical Applications

- Communication Systems
- Point to Point Radio
- Fiber Optics
- Test Equipment
- Wideband Military & Space

Features

- Center Frequency: 6.91GHz
- Passband Loss: 1.05dB @ 6.91GHz
- Rejection: 20dBc @ 6.1GHz and 8.0GHz
40dBc @ 5.7GHz and 8.1GHz
- Surface-mountable
- Size: 8.13 x 6.56 x 2.79mm

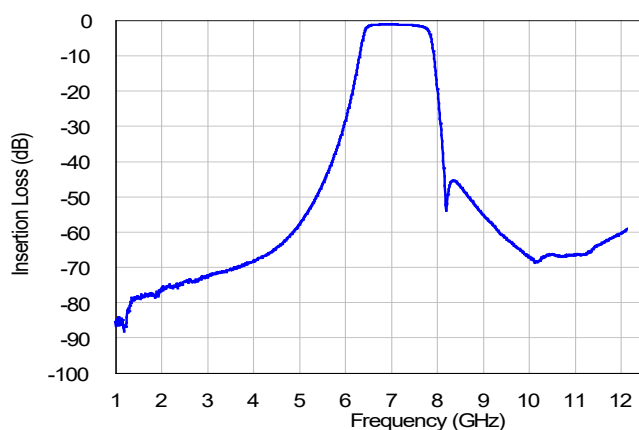


Electrical Specifications (TA = +25°C)

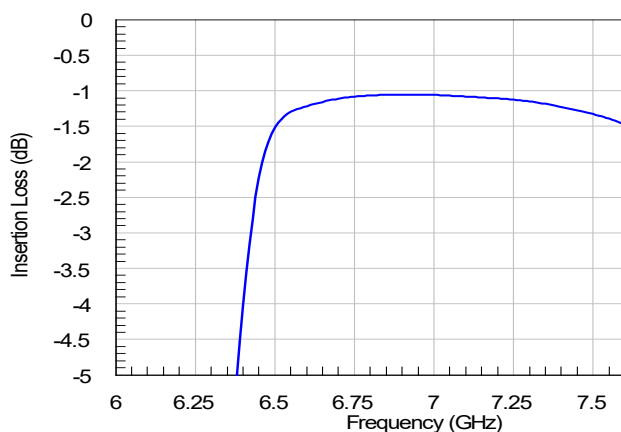
Parameter	Units	Minimum	Typical	Maximum
Frequency	GHz	6.5		7.6
Passband Loss	dB		1.05	1.55
Passband Return Loss	dB		23	
Rejection 20dBc Point	GHz	6.1		8.0
Rejection 40dBc Point	GHz	5.7		8.1
Package Type			Substrate	

Performance Graphs

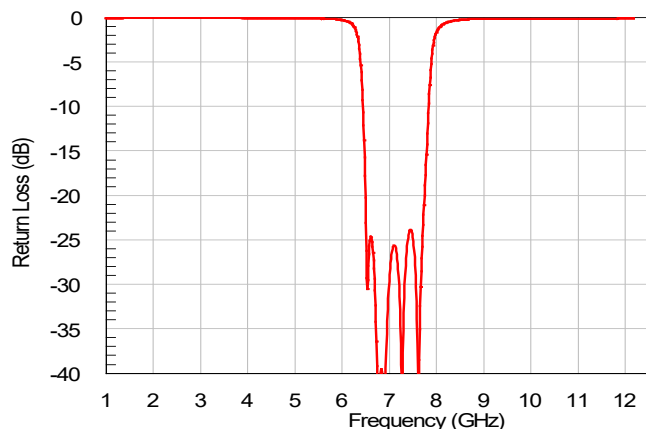
Insertion Loss



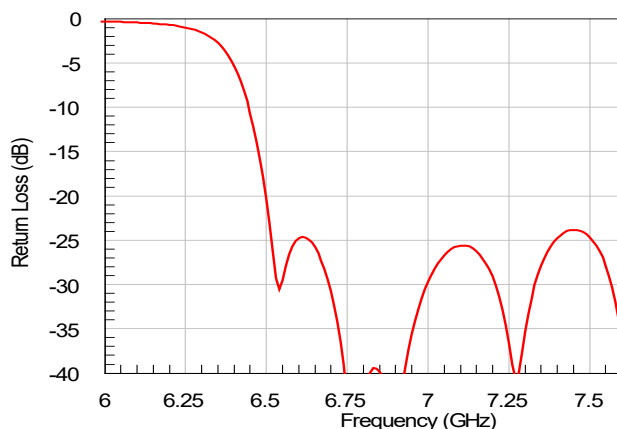
Insertion Loss (Passband)



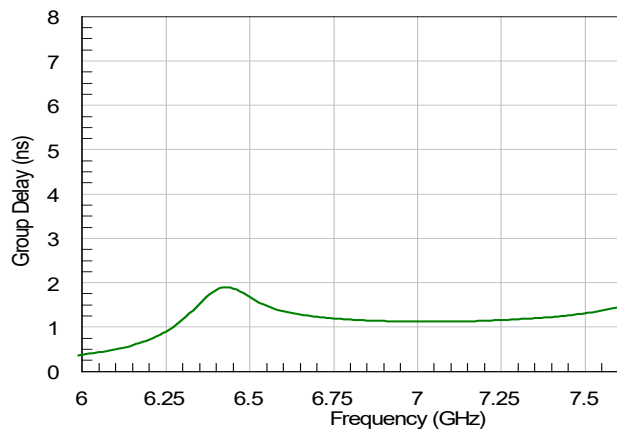
Return Loss



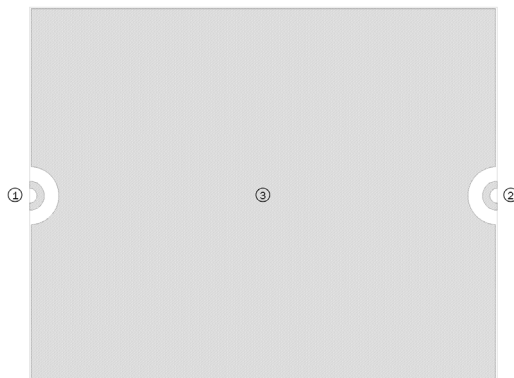
Return Loss (Passband)



Group Delay (Passband)



Outline Drawing (Bottom View)



Pad Descriptions

Pad	Function	Description
1	RFIN	DC coupled 50Ω Matched
2	RFOUT	DC coupled 50Ω Matched
3	GND	Ground

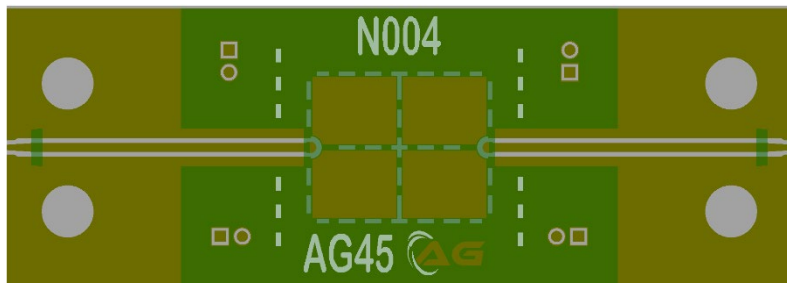
*Solder attach part to PCB

Absolute Maximum Ratings

Parameter	Rating
Drain Bias Voltage (VDD)	No Bias
RF Input Power (RFIN)	+20dBm*
Channel Temperature	150°C
Storage Temperature	-65 to 150°C
Operating Temperature	-55 to 85°C

*To be tested

Evaluation Board*



*Gerber files available upon request

Layer	Dimension
Cu Top	½ oz
Rogers 4003C	8mil
Cu Bottom	½ oz

Assembly Notes:

1. Substrate thickness is 15mil
2. Backside metallization: 2.5um gold over 0.2um Pd
3. Solder attach part to PCB



Packaging Information

- GP-4 (Gel-Pak)

Important Notice

The information contained in this Data Sheet and any associated documents is believed to be reliable; however, AmpliTech makes no warranties regarding the Data Sheet Information and assumes no responsibility of liability whatsoever for the use of the said information. All Data Sheet information is subject to change without notice.