



Dynamic Engineers Inc.

2550 Gray Falls Dr., Suite#128, Houston, TX, 77077 USA
TEL: 1-281-870-8822 EMAIL: Sales@DynamicEng.com

ETXO7500I-12MHz-A

Part Number

Features and Benefits

12MHz CMOS output
3.3V supply voltage, 1.5mA Max.
0°C to +200°C operating temperature

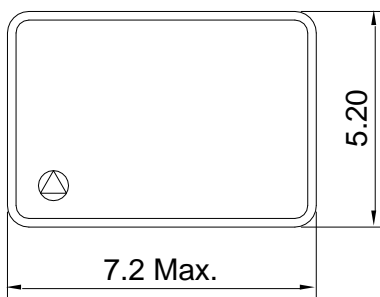
Typical Applications

Down-hole device clock reference

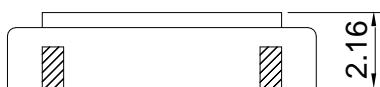
Mechanical Drawing & Pin Connections

Drawing No: MD150068-1

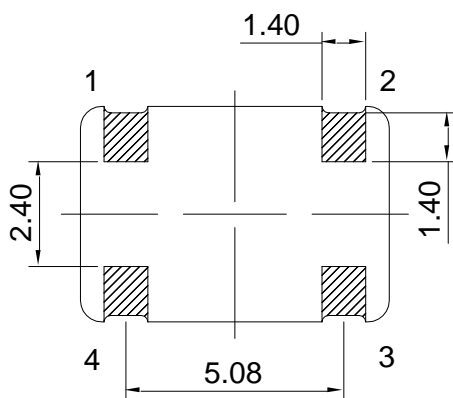
Top View



Side View



Bottom View

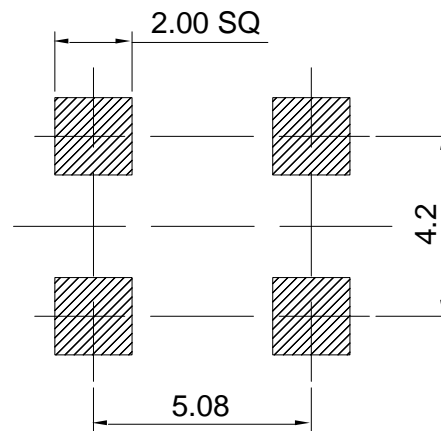


Pin Functions:

	A	B
1	Pad	Function
2	1	No Connect
3	2	Ground (Case)
4	3	Output
5	4	Supply Voltage (Vcc)

Unit : mm

Recommended Land Pattern





Dynamic Engineers Inc.

2550 Gray Falls Dr., Suite#128, Houston, TX, 77077 USA
TEL: 1-281-870-8822 EMAIL: Sales@DynamicEng.com

ETXO7500I-12MHz-A

Part Number: ETXO7500I-12MHz-A

Specifications

Oscillator Specification		Sym	Condition	Value			Unit	Note
				Min.	Typ.	Max.		
Operational Frequency Range		F_{nom}			12.000		MHz	
CMOS	Load				15		pF	
	Output Symmetry			45		55	%	
Power Supply								
Voltage		V_{cc}			3.30		V	
Current Consumption						1.5	mA	
Frequency Stability								
Versus temperature			0°C to +200°C			+/-175	ppm	
Environmental Conditions								
Operating temperature range			0°C to +200°C					